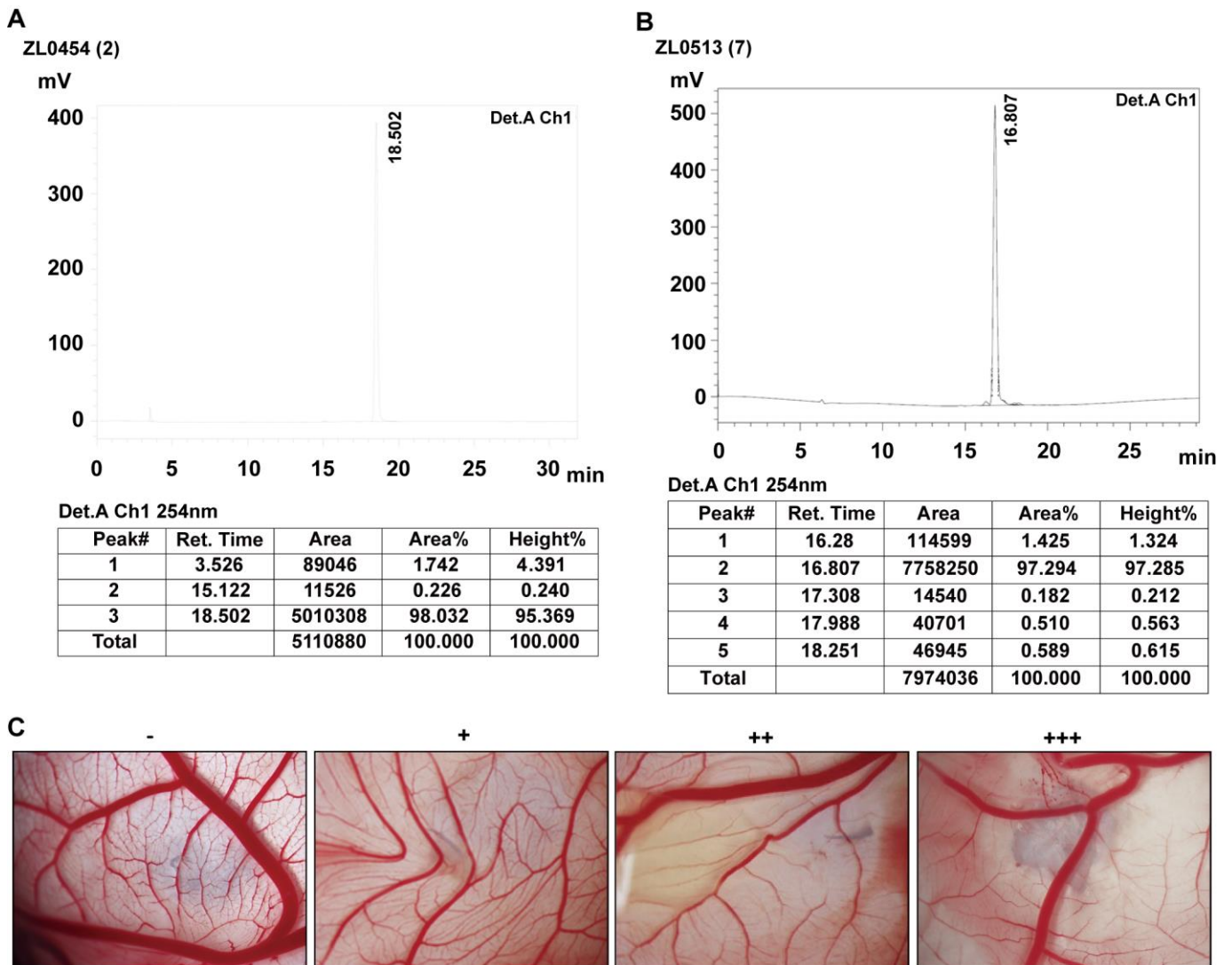
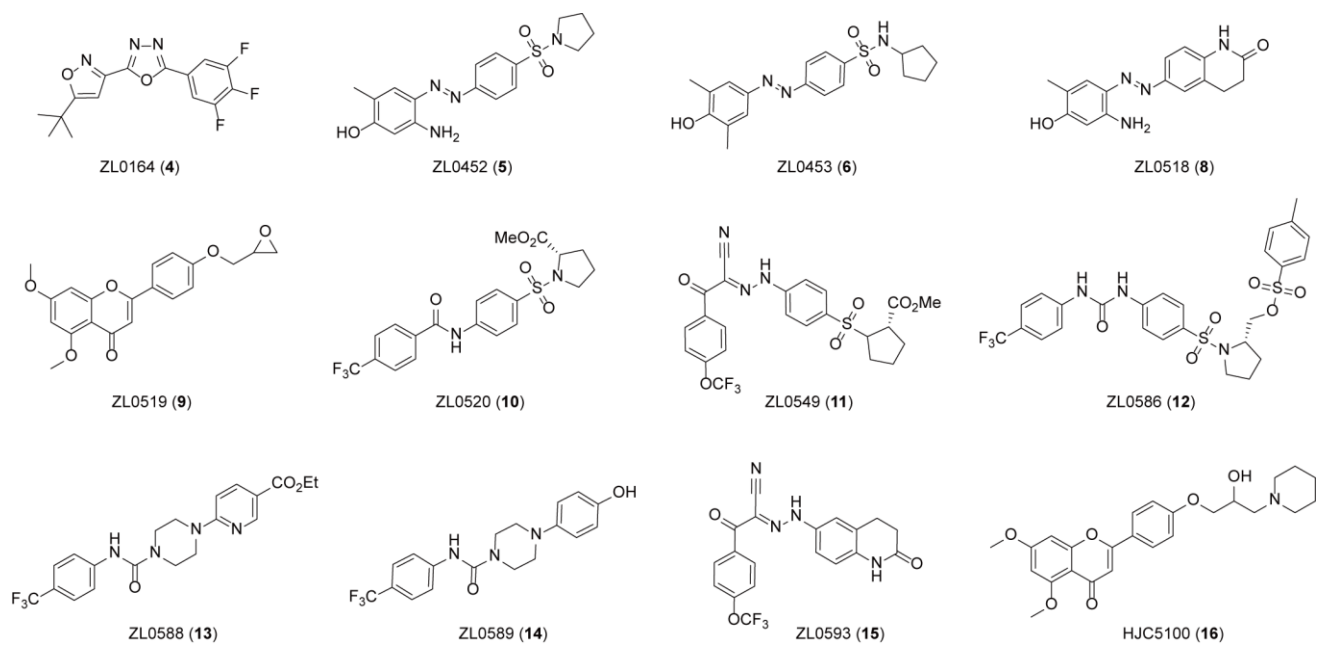


Supplementary Material

1. Supplementary Figures



Supplementary Figure 1. The purity of two highlighted BRD4 inhibitors and diagram of inhibition level on angiogenesis in chick embryo CAM model. (A) ZL0454 (2) and ZL0513 (7) was detected using HPLC. HPLC spectra of (A) ZL0454 (2) and (B) ZL0513 (7). (B) Diagram of inhibition level on angiogenesis by BRD4 inhibitors in chick embryo CAM model. No apparent inhibition on blood vessels was marked as “-”. The inhibition of micro vessels formation was marked as “+”, “++” indicates an obvious inhibitory on the three-blood vessel network, and “+++” presents the significantly inhibition of secondary vessels branch.



Supplementary Figure 2. Structures of select BET inhibitors in Table 1 that are not shown in Figure 1 of the main text.