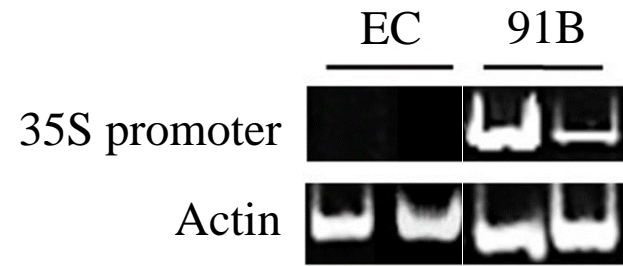
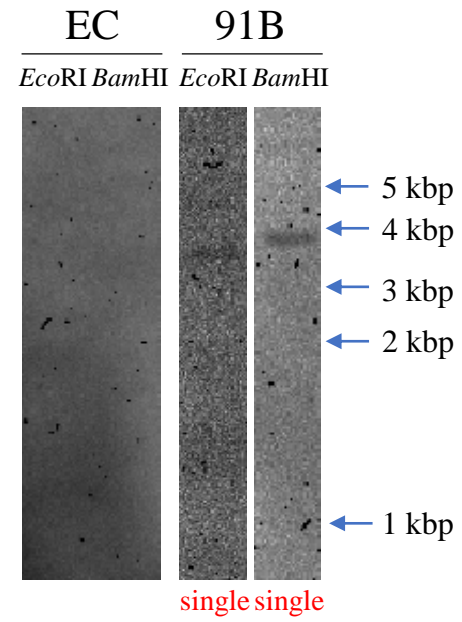


(A)



(B)



S4 Fig. Amplification of a partial sequence of transgene 35S promoter by PCR and confirmation of the copy number of transgenes by Southern-blot hybridization. (A) Detection of the 35S promoter sequence was performed using two individuals in each transgenic tomato line. The primer sets used for PCR are described in Table S1. An amplified fragment derived from the 35S promoter sequence was detected only in line 91B. (B) The copy number of transgene was confirmed by Southern-blot hybridization using a DIG-labeled cRNA probe for the CaMV-35S promoter. A single band in both *Bam*HI and *Eco*RI digestions was detected only in line 91B.