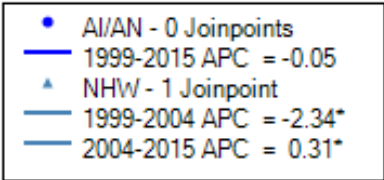
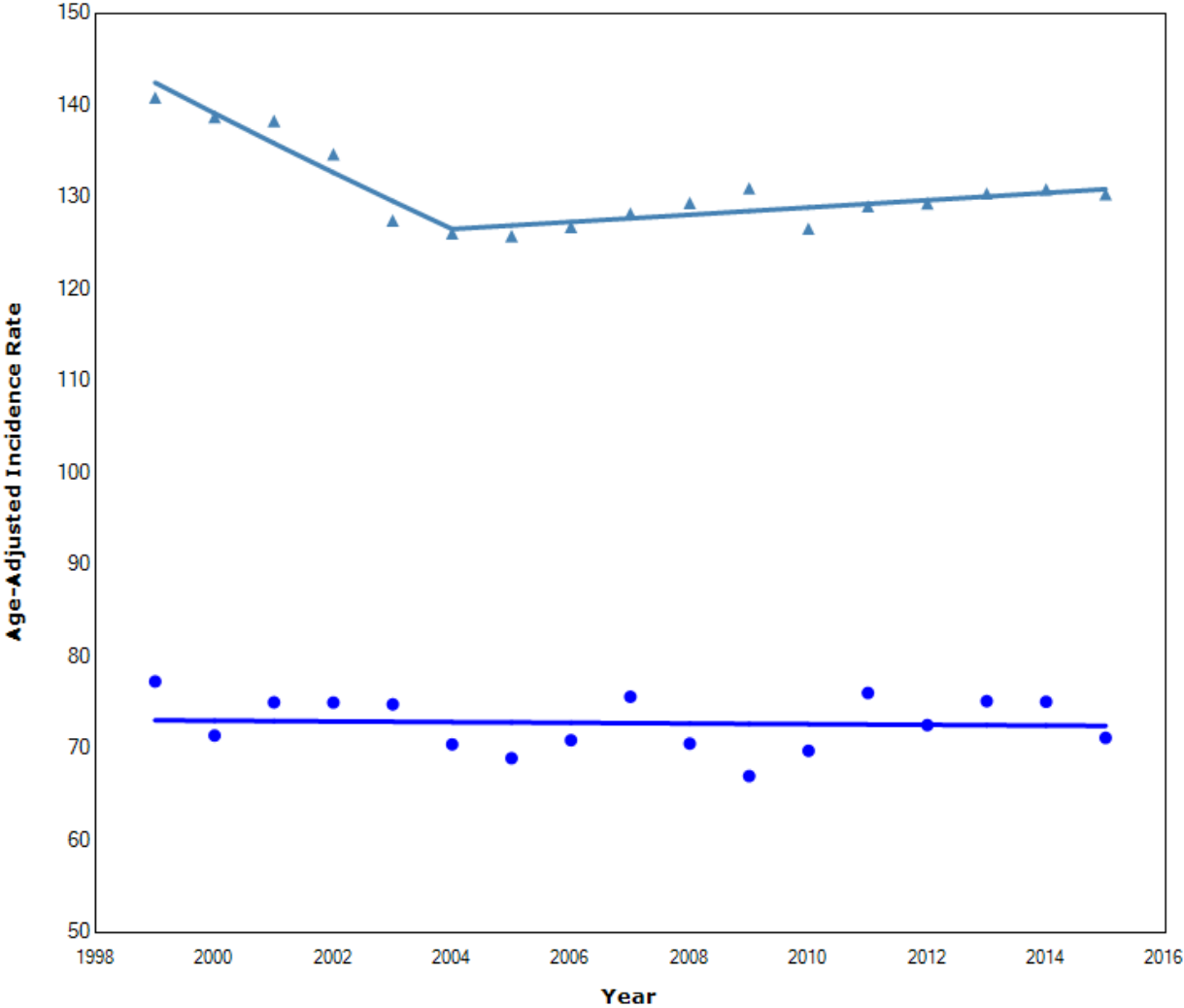


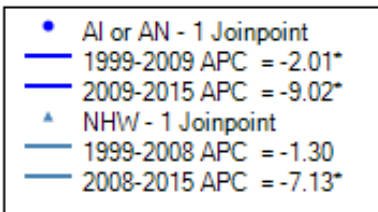
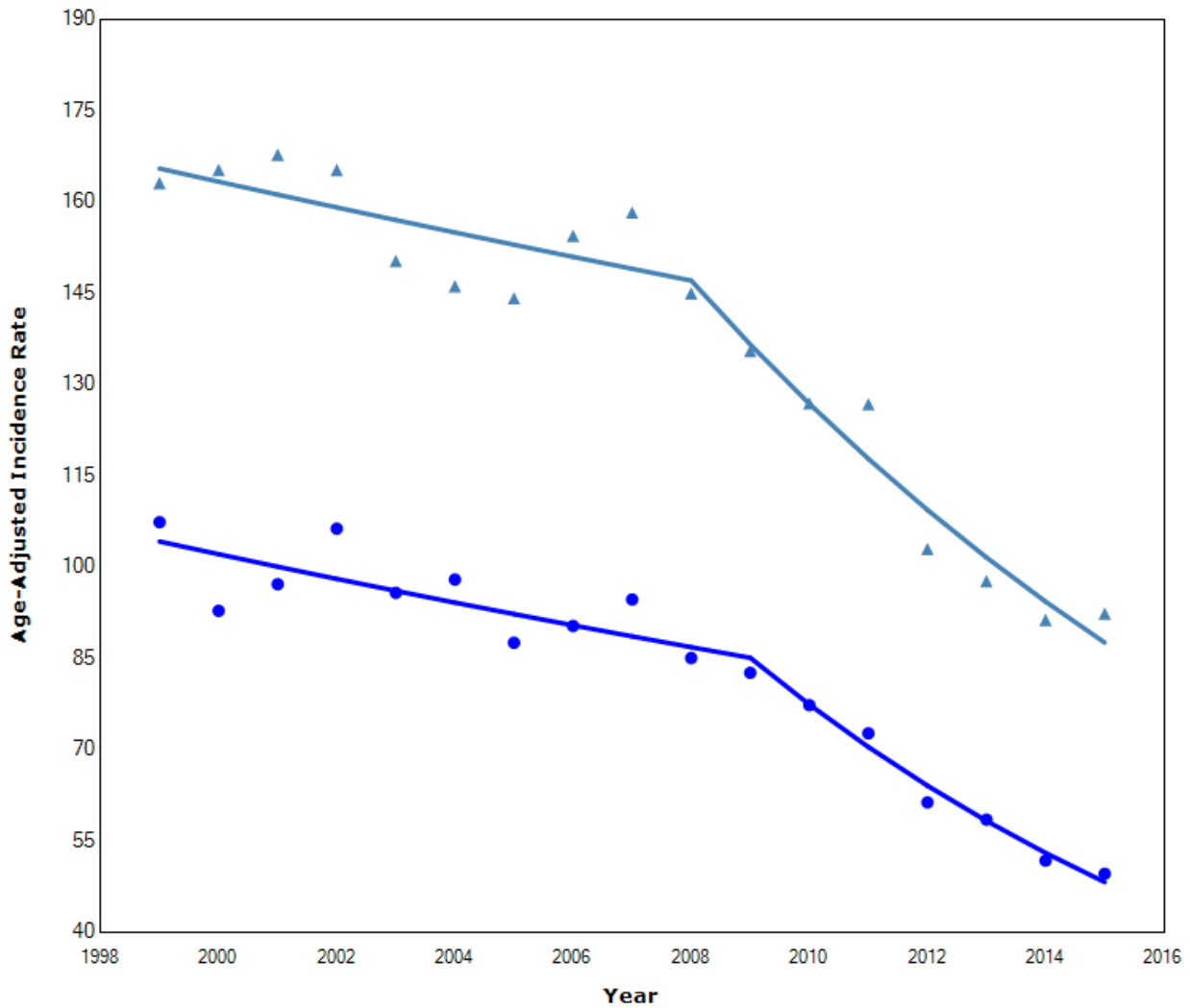
Supplemental Digital Content

eFigure 1: Trends in age-adjusted incidence rates for female breast cancer by American Indian and Alaska Native (AI/AN) and non-Hispanic White (NHW) race, United States, 1999-2015.



Note: Incidence rates are per 100,000 women.
 *Annual percent change has significantly increased or decreased.

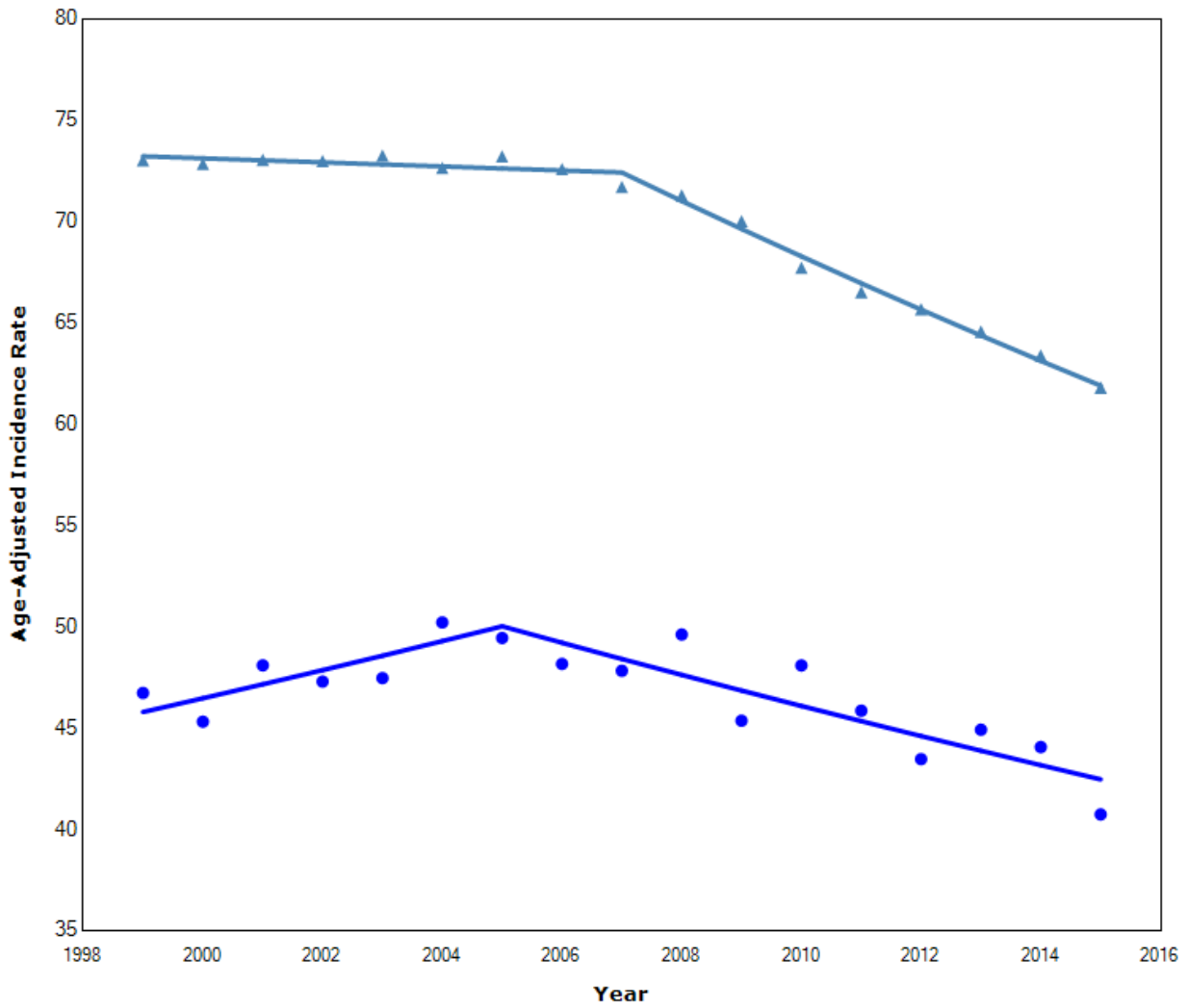
eFigure 2: Trends in age-adjusted incidence rates for prostate cancer by American Indian and Alaska Native (AI/AN) and non-Hispanic White (NHW) race, United States, 1999-2015.



Note: Incidence rates are per 100,000 men.

*Annual percent change has significantly increased or decreased.

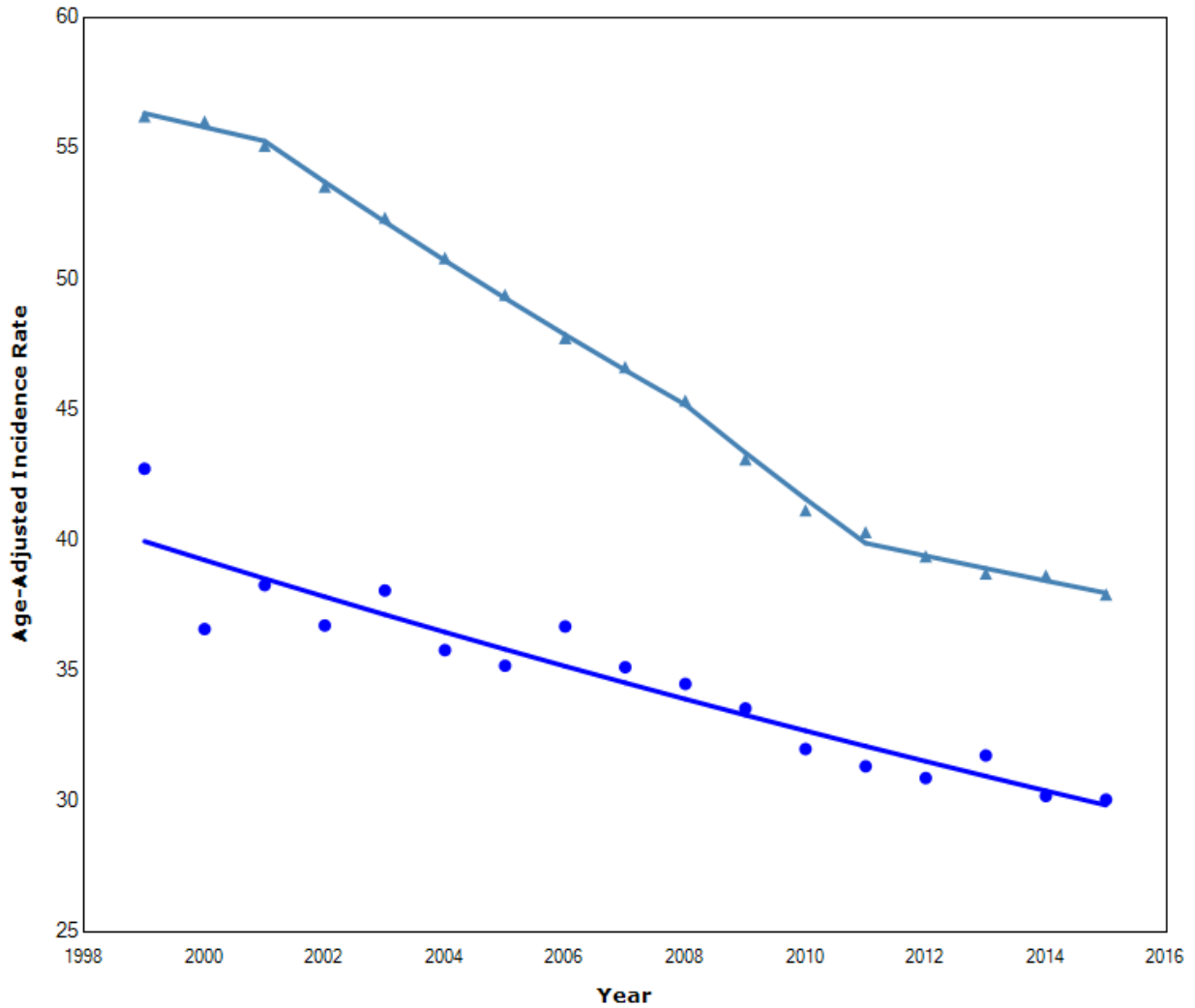
eFigure 3: Trends in age-adjusted incidence rates for lung and bronchus cancer by American Indian and Alaska Native (AI/AN) and non-Hispanic White (NHW) race, United States, 1999-2015.



● AI or AN - 1 Joinpoint
 — 1999-2005 APC = 1.48
 — 2005-2015 APC = -1.62*
 ▲ NHW - 1 Joinpoint
 — 1999-2007 APC = -0.14
 — 2007-2015 APC = -1.94*

Note: Incidence rates are per 100,000 persons.
 *Annual percent change has significantly increased or decreased.

eFigure 4: Trends in age-adjusted incidence rates for colon and rectum cancer by American Indian and Alaska Native (AI/AN) and non-Hispanic White (NHW) race, United States, 1999-2015.



Note: Incidence rates are per 100,000 persons.

*Annual percent change has significantly increased or decreased.