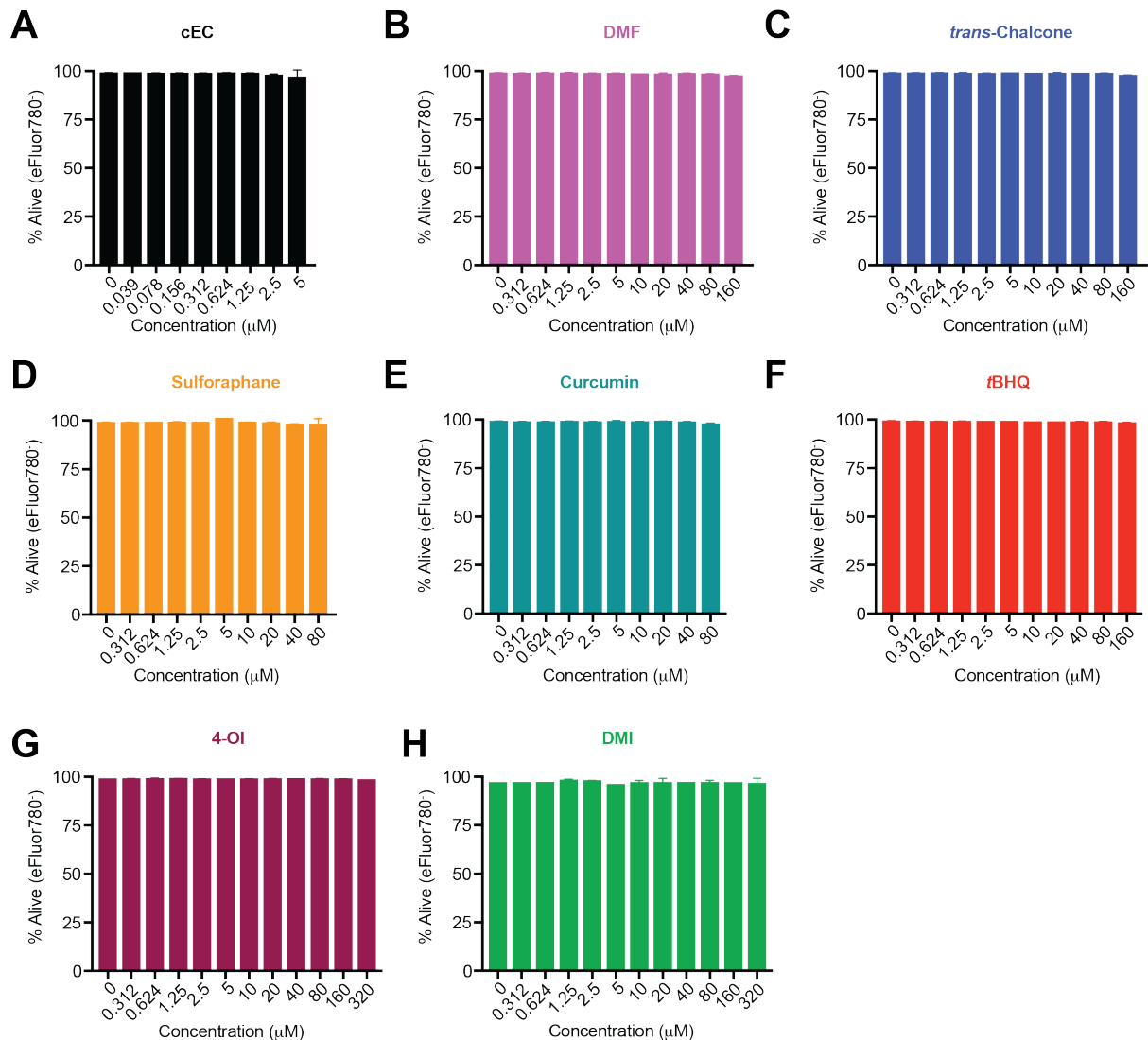
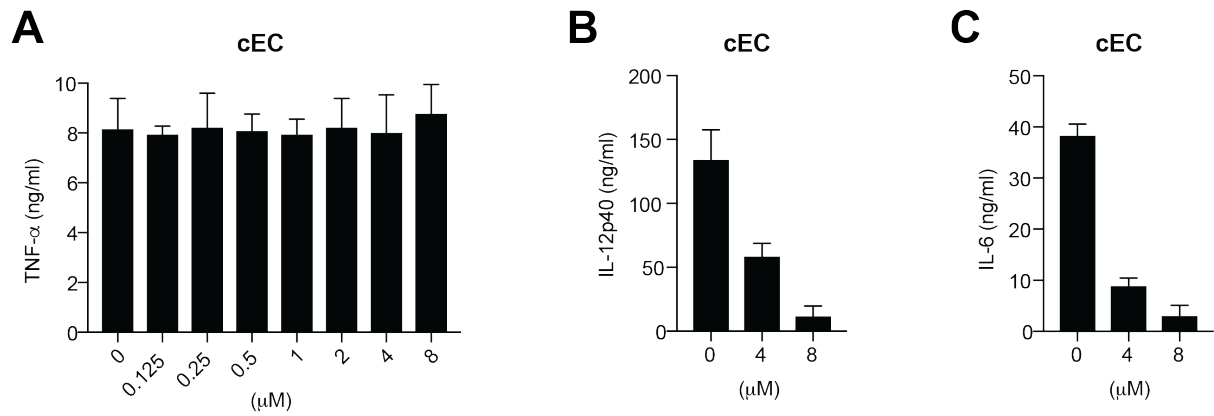


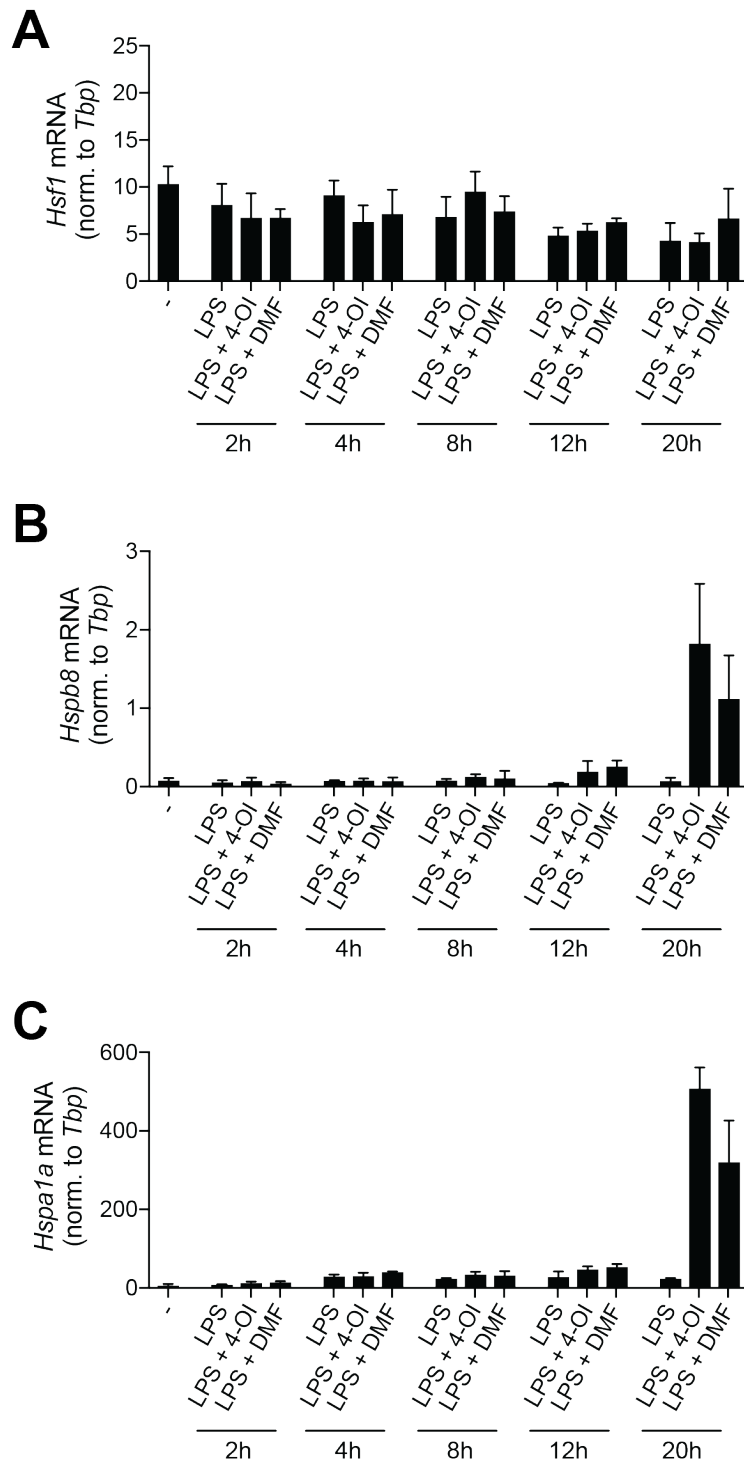
Supplementary Figures



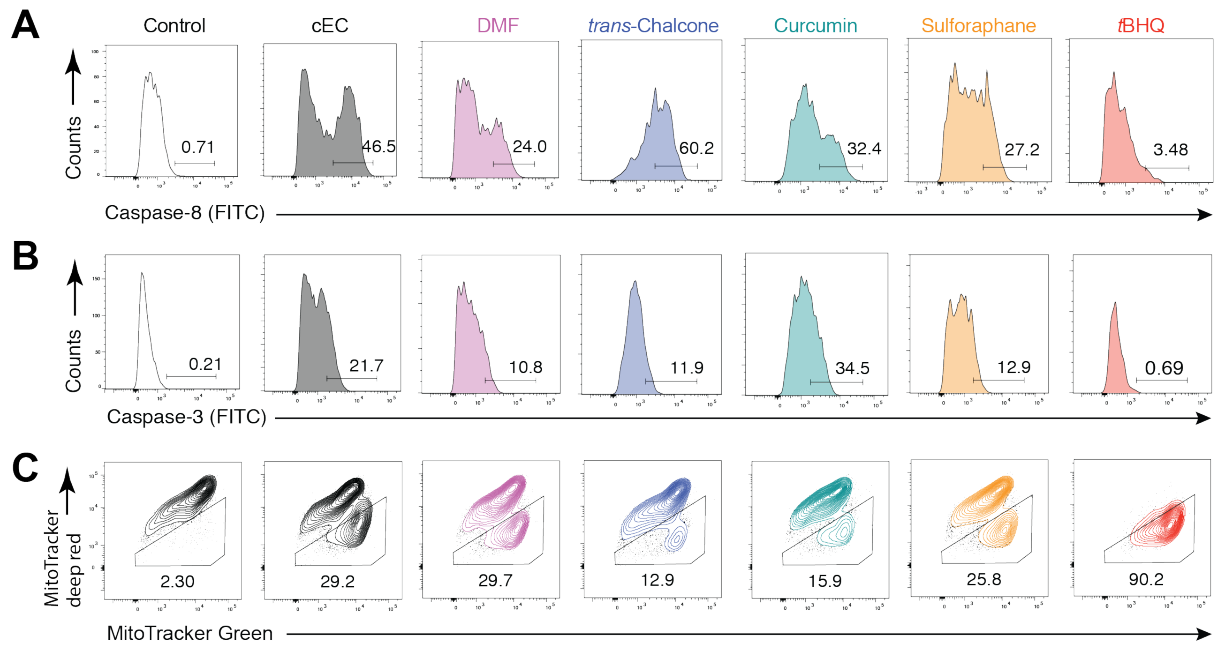
Supplementary Figure 1. The tested Nrf2 activators do not display toxicity in the utilized concentration range. (A-H) Shown is the survival assessed by flow cytometric staining with eFluor780 in BMDCs, which were pulsed with cEC (A), dimethyl fumarate (DMF) (B), *trans*-chalcone (C), sulforaphane (D), curcumin (E), *t*BHQ (F), 4-octyl itaconate (4-OI) (G) and dimethyl itaconate (DMI) (H) for 1 hour and stimulated with R837 for 17 hours ($n=3$). Bar graphs show mean + standard deviation. Data are representative of two independent experiments. For each panel, a representative experiment with replicates of in vitro culture conditions is shown. Student's t test (two-tailed, unpaired) was used for the comparison of two groups.



Supplementary Figure 2. High concentrations of cEC do not boost TNF- α , IL-12p40 and IL-6 production. (A-C) TNF- α (A), IL-12p40 (B) and IL-6 (C) secretion measured by ELISA from BMDCs, which were stimulated with LPS for 3h and subsequently treated with cEC for 17h (n=3). Bar graphs show mean + standard deviation. Data are representative of two independent experiments.



Supplementary Figure 3. Nrf2 activators at high doses induce Hsf1 activation at late stages of stimulation. (A-C) *Hsf1* (A), *Hspb8* (B) and *Hspa1a* (C) expression levels determined by real-time PCR in WT BMDCs, which were primed with LPS for 3 hours and subsequently stimulated with high doses of 4-OI (480 μ M) and DMF (120 μ M) for the indicated times. The expression was normalized to the housekeeping gene *Tbp* (n=3). Bar graphs show mean + standard deviation.



Supplementary Figure 4. High concentrations of Nrf2 activators induce mitochondrial apoptosis. (A-C) Cleavage of caspase-8 (A) and of caspase-3 (B), and loss in mitochondrial membrane potential (C) were assessed by flow cytometry in BMDCs primed with LPS for 3 hours and treated with cEC (8 μ M), DMF (120 μ M), *trans*-chalcone (480 μ M), curcumin (240 μ M), sulforaphane (60 μ M), or tBHQ (480 μ M) for additional 10 hours. Numbers in the FACS plots indicate the percentage of the depicted gates. Data are representative of two independent experiments.