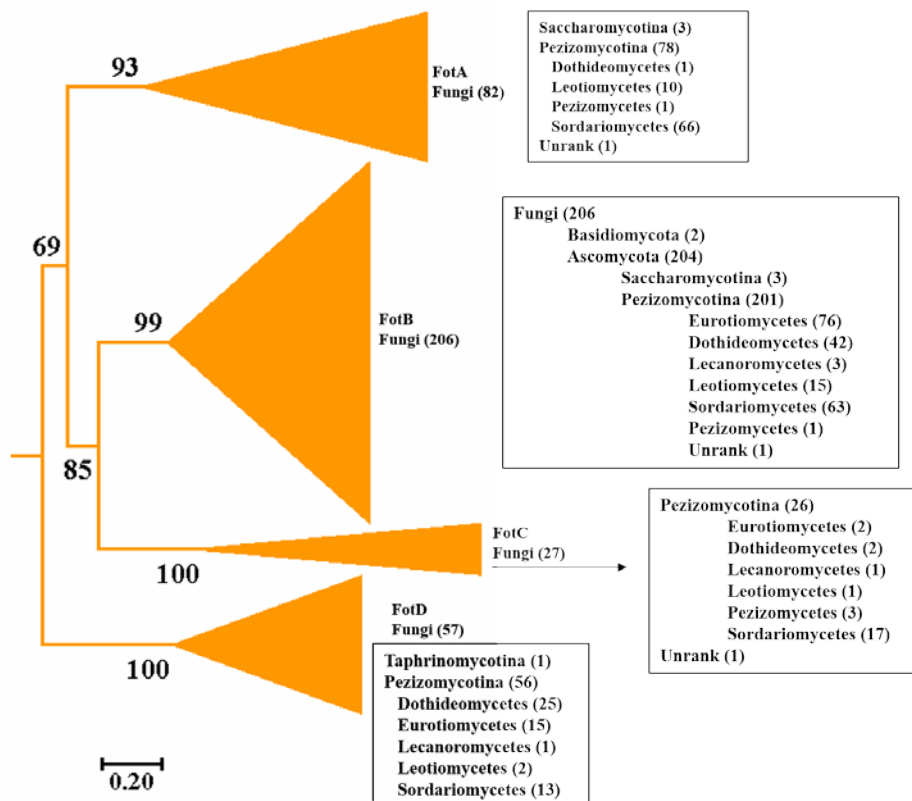


A. Subphylogenetic tree of *Lemi*



B. Subphylogenetic tree of *Fot*

Figure S3. The intra-group classification and distributions of *Lemi* and *Fot* transposons in fungi and land plants. (A) Subphylogenetic tree of *Lemi* transposases constructed using the maximum likelihood method. (B) Subphylogenetic tree of *Fot* transposases constructed using the maximum likelihood method. The number of species/organisms containing *Lemi* and *Fot* elements for each clade is given in brackets.