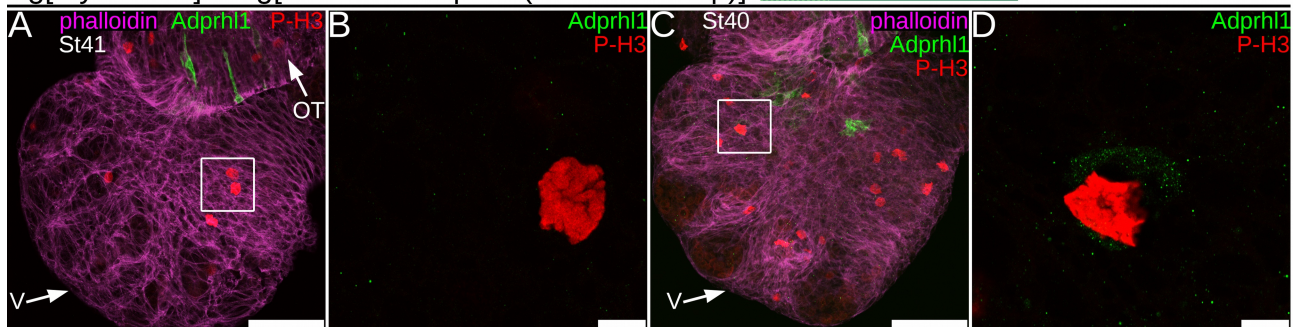


**S4.**

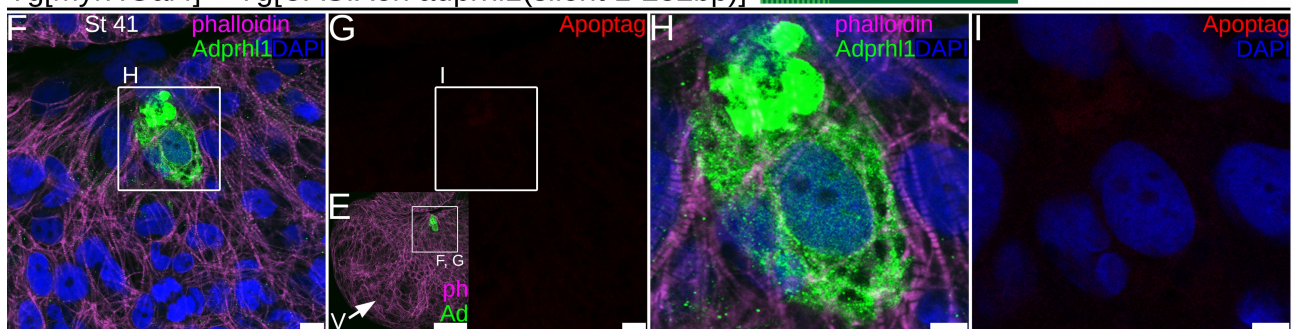
**Excess Adprh1 production and mitosis are not linked**

Tg[myl7:Gal4] + Tg[UAS:Xen *adprh1*(silent 1-282bp)]

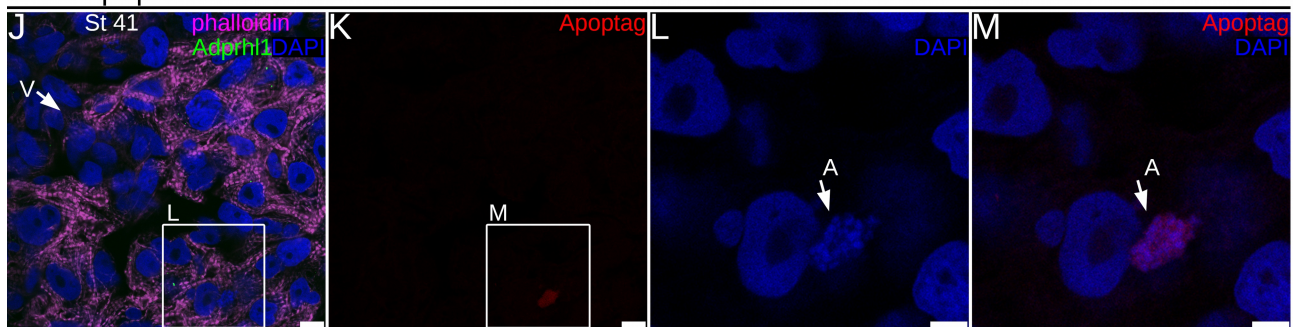


**Excess Adprh1 production does not cause cell death**

Tg[myl7:Gal4] + Tg[UAS:Xen *adprh1*(silent 1-282bp)]



**Rare apoptotic cell within a heart ventricle**



**Tg[myl7:Gal4] + Tg[UAS:M2(H37A)] toxic ion channel (induced necrotic cell death)**

