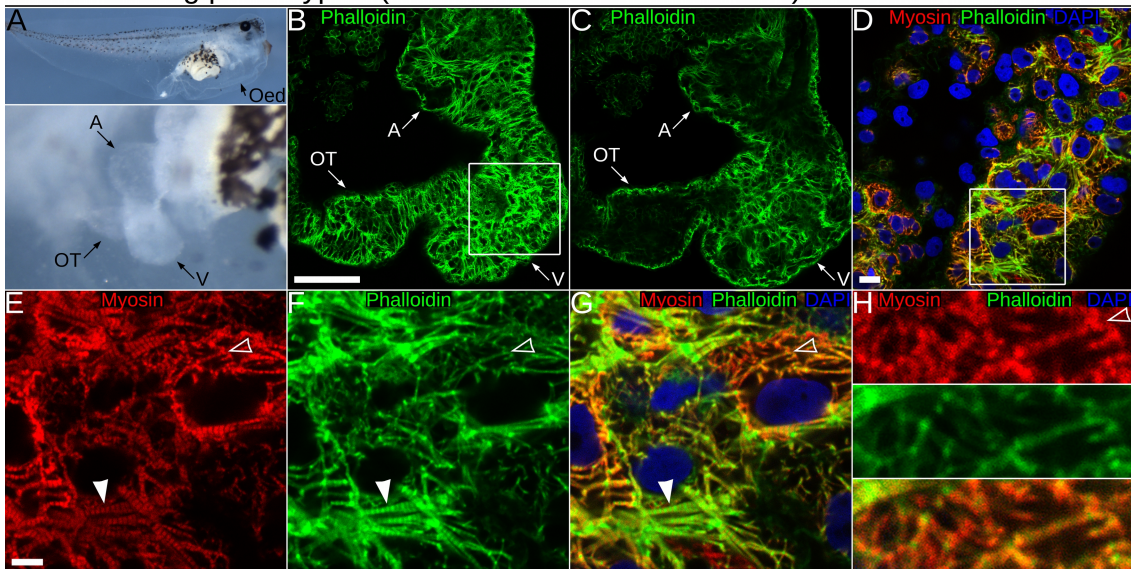


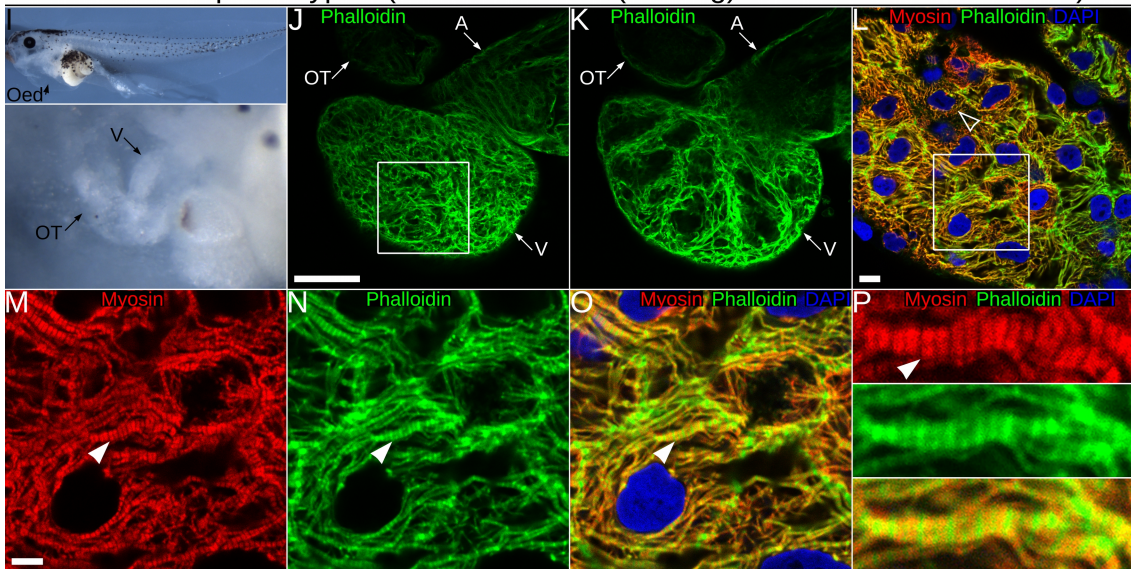
S15.

Range of ventricle phenotype severities observed after mutation of *adprhl1* exon 6
gRNA: gAdprhl1-e6-1

St 44 - Strong phenotype - (Heart defect 1 - inert ventricle)



St 44 - Mildest phenotype - (Heart defect 2 - (beating) small / thin wall ventricle)



St 44 - Non-injected control

