

Supplemental Appendix

Lenalidomide/rituximab induces high molecular response in untreated follicular lymphoma: LYSA ancillary RELEVANCE study

Delfau-Larue et al

Supplemental Table S1: t(14;18) detection at diagnosis in 222 informative patients

*For those non-informative patients in PB or BM, t(14,18) was identified in lymph nodes.

		PBL at Diagnosis		
		(+) (n = 213)	(-) (n = 7)	Not Done (n = 2)
BM at Diagnosis	(+) (n = 136)	131	3	2
	(-) (n = 3)	2	1*	0
	Not Done (n = 83)	80	3*	0

Supplemental Table S2. Comparison between population with MRD available and population without MRD available in the 581 French population

	MRD Data (n = 222)	No MRD Data (n = 359)	All (N = 581)	P
Median (range) age, y	60 (30-89)	61 (32-83)	60 (30-89)	.3
Male, n (%)	120 (54)	160 (45)	280 (48)	.027
ECOG PS, n (%)				
0	148 (67)	223 (62)	371 (64)	.09
1	69 (31)	115 (32)	184 (32)	
2	4 (2)	20 (6)	24 (4)	
Not evaluated	1 (0.5)	1 (0.3)	2 (0.3)	
Ann Arbor stage, n (%)				
I-II	8 (4)	36 (10)	44 (8)	.004
III-IV	214 (96)	323 (90)	537 (92)	
Nodal mass > 6 cm, n (%)	110 (50)	186 (52)	296 (51)	.06
FLIPI score, n (%)				
0-1	19 (9)	61 (17)	80 (14)	.002
2	91 (41)	107 (30)	198 (34)	
3-5	111 (50)	191 (53)	302 (52)	
Missing	1 (0.5)	0	1 (0.2)	
FLIPI 2 score, n (%)				
0-1	58 (26)	96 (27)	154 (27)	.96
2	65 (29)	105 (29)	170 (29)	
3-5	95 (43)	148 (41)	243 (42)	
Missing	4 (2)	10 (3)	14 (2)	
Number of peripheral lymph nodes, n (%)				
≤4	105 (47)	196 (55)	301 (52)	.09
>4	117 (53)	163 (45)	280 (48)	
Treatment, n (%)				
R-CVP	1 (0.5)	10 (3)	11 (2)	—
R-CHOP	99 (45)	175 (49)	274 (47)	
R ²	122 (55)	174 (48)	296 (51)	
β2M (mg/L), n (%)				
<3 mg/L	138 (62)	234 (65)	372 (64)	.46
≥3 mg/L	78 (35)	114 (32)	192 (33)	
Missing	6 (3)	11 (3)	17 (3)	
Elevated LDH (>ULN), n (%)				
No	158 (71)	242 (67)	400 (69)	.36
Yes	63 (28)	115 (32)	178 (31)	
Missing	1 (0.5)	2 (0.6)	3 (0.5)	
BM involvement, n (%)				
No	75 (34)	175 (49)	250 (43)	.003
Yes	137 (62)	174 (48)	311 (54)	
Unspecified	4 (2)	4 (1)	8 (1)	
Not done	6 (3)	6 (2)	12 (2)	

β 2M, beta-2 microglobulin; BM, bone marrow; ECOG PS, Eastern Cooperative Oncology Group performance status; FLIPI, Follicular Lymphoma International Prognostic Index; LDH, lactate dehydrogenase; R-CHOP, rituximab plus cyclophosphamide, doxorubicin, vincristine, and prednisone; R-CVP, rituximab plus cyclophosphamide, vincristine, and prednisone; ULN, upper limit of normal.

Supplemental Table S3. Comparison between population with MRD available and population without MRD available in the N = 1030 total RELEVANCE population

	MRD Data (n = 222)	No MRD Data (n = 808)	All (N = 1030)	P
Median (range) age, y	60 (30-89)	59 (23-85)	59 (23-89)	.08
Male, n (%)	120 (54)	382 (47)	502 (49)	.71
ECOG PS, n (%)				
0	148 (67)	538 (67)	686 (67)	.72
1	69 (31)	245 (30)	314 (30)	
2	4 (2)	23 (3)	27 (3)	
Not evaluated	1 (0.5)	2 (0.2)	3 (0.3)	
Ann Arbor stage, n (%)				
II-II	8 (4)	62 (8)	70 (7)	.034
III-IV	214 (96)	746 (92)	960 (93)	
Nodal mass >6 cm, n (%)	110 (50)	396 (49)	506 (49)	.94
FLIPI score, n (%)				
0-1	19 (9)	134 (17)	153 (15)	.007
2	91 (41)	283 (35)	374 (36)	
3-5	111 (50)	390 (48)	501 (49)	
Missing	1 (0.5)	1 (0.1)	2 (0.2)	
FLIPI 2 score, n (%)				
0-1	58 (26)	245 (30)	303 (29)	.46
2	65 (29)	226 (28)	291 (28)	
3-5	95 (43)	321 (40)	416 (40)	
Missing	4 (2)	16 (2)	20 (2)	
Number of peripheral lymph nodes, n (%)				
≤4	105 (47)	428 (53)	533 (52)	.15
>4	117 (53)	379 (47)	496 (48)	
Missing	0	1 (0.1)	1 (0.1)	
Treatment, n (%)				
R-CVP	1 (0.5)	27 (3)	28 (3)	—
R-bendamustine	0	117 (14)	117 (11)	
R-CHOP	99 (45)	273 (34)	372 (36)	
R ²	122 (55)	391 (48)	513 (50)	
β2M (mg/L), n (%)				
<3 mg/l	138 (62)	508 (63)	646 (63)	.75
≥3 mg/L	78 (35)	272 (34)	350 (34)	
Missing	6 (3)	28 (3)	34 (3)	
Elevated LDH (>ULN), n (%)				
No	158 (71)	574 (71)	732 (71)	.99
Yes	63 (28)	230 (28)	293 (28)	
Missing	1 (0.5)	4 (0.5)	5 (0.5)	
BM involvement, n (%)				
No	75 (34)	364 (45)	439 (43)	.002

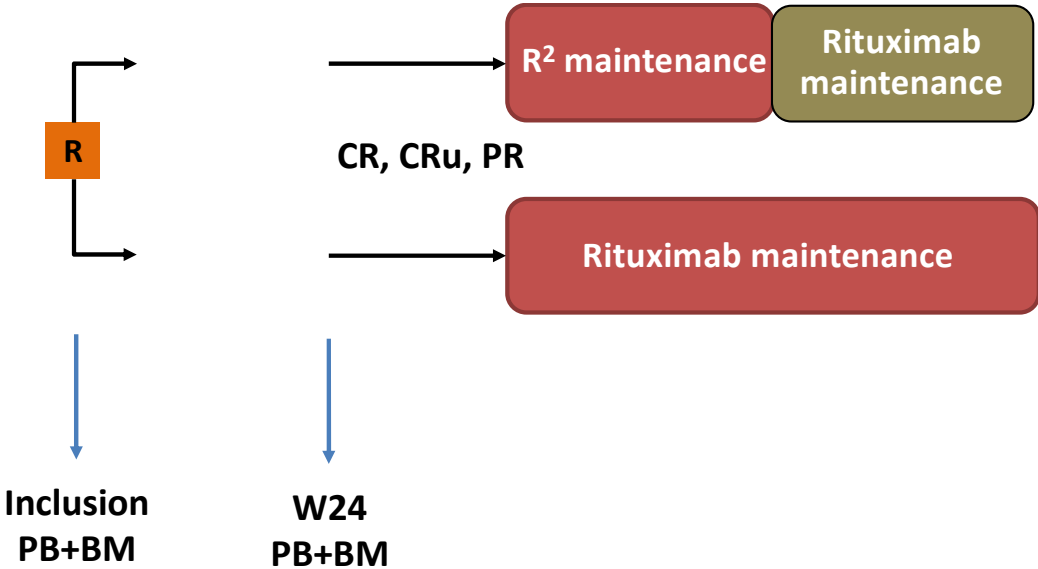
	MRD Data (n = 222)	No MRD Data (n = 808)	All (N = 1030)	<i>P</i>
Yes	137 (62)	431 (53)	568 (55)	
Unspecified	4 (2)	7 (1)	11 (1)	
Not done	6 (3)	6 (1)	12 (1)	

β2M, beta-2 microglobulin; BM, bone marrow; ECOG PS, Eastern Cooperative Oncology Group performance status; FLIPI, Follicular Lymphoma International Prognostic Index; LDH, lactate dehydrogenase; R-CHOP, rituximab plus cyclophosphamide, doxorubicin, vincristine, and prednisone; R-CVP, rituximab plus cyclophosphamide, vincristine, and prednisone; ULN, upper limit of normal.

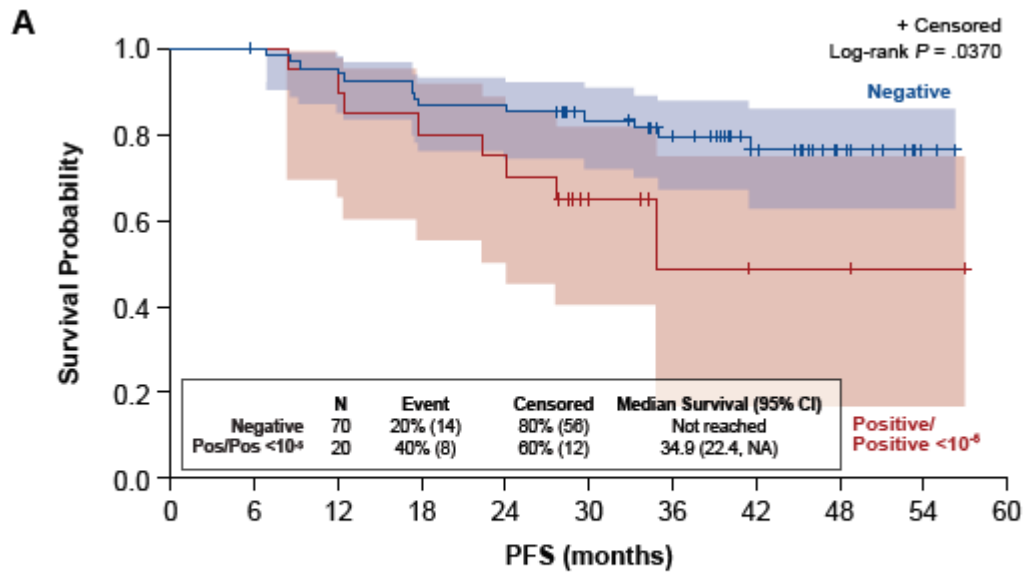
Supplemental Table S4. Distribution of PB and BM samples at W24 compared with diagnosis

		Diagnosis (n=222)		
W24 (n=207)		PB Alone (n = 82)	BM Alone (n = 2)	PB+BM (n = 137)
	PB Alone (n = 74)	35	1	38
	BM Alone (n = 3)	2	-	1
	PB+BM (n = 130)	38	1	91
	Not Done (n = 15)	8		7

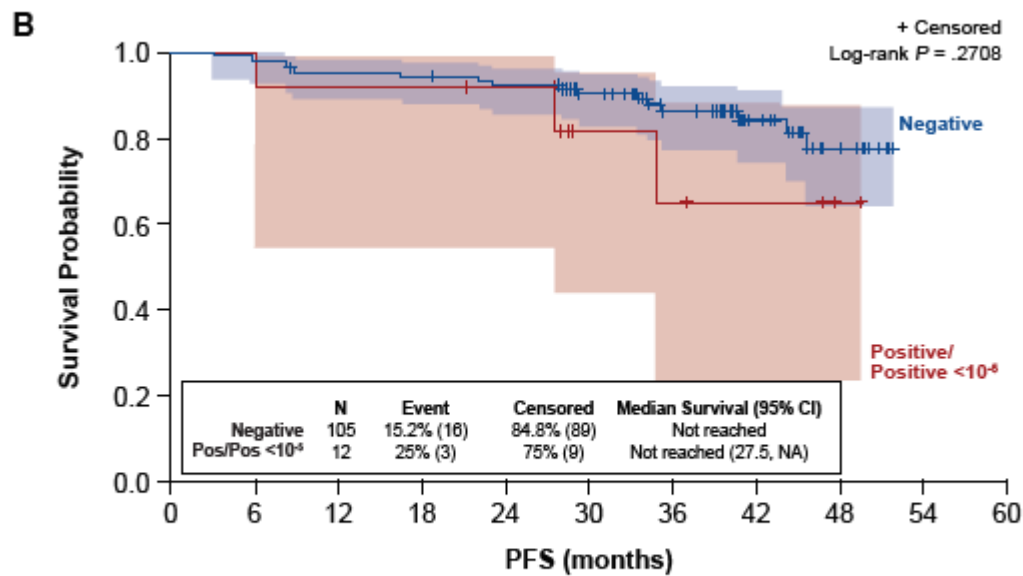
Supplemental Figure S1. Design of the international, multicenter, randomized RELEVANCE study, and sample collection



Supplemental Figure S2 : Impact of Peripheral Blood or Bone Marrow-positive MRD on progression-free survival according to treatment arms



Negative	70	68	64	59	58	46	38	24	11	2	0
Pos/Pos $<10^{-4}$	20	20	18	16	15	7	3	2	2	1	0



Negative	105	103	99	98	95	82	55	34	9	0
Pos/Pos $<10^{-4}$	12	12	11	11	10	5	4	3	1	0