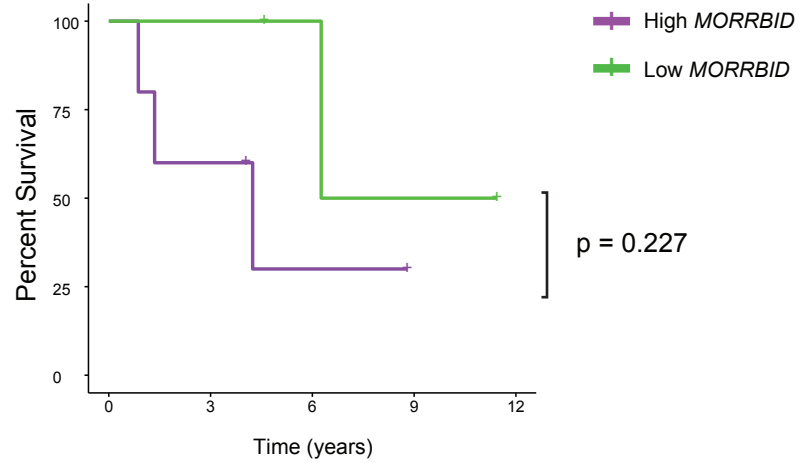


Supplemental Figure 1. Cai *et al*

Supplemental Figure 1: Improvement of anemia in *Shp2*M* mice.

- (A) Red blood cell counts and hemoglobin concentration in peripheral blood.
 (B) Flow cytometry profile and quantitative analysis of erythroid progenitor cells in bone marrow. Samples from 4 genotypes were stained with a combination of Ter119 and CD71 antibodies and subjects to flow analysis.

n= 4~6 mice. *, p<0.05; **, p<0.01; ***, p<0.001; ****, p<0.0001.



Supplemental Figure 2. Cai *et al*

Supplemental Figure 2: Kaplan-Meier survival plots of JMML patients with high or low expression of *MORRBID* where no *SHP2*, *KRAS* and *NRAS* mutations were detected. N=9, respectively. p=0.227.