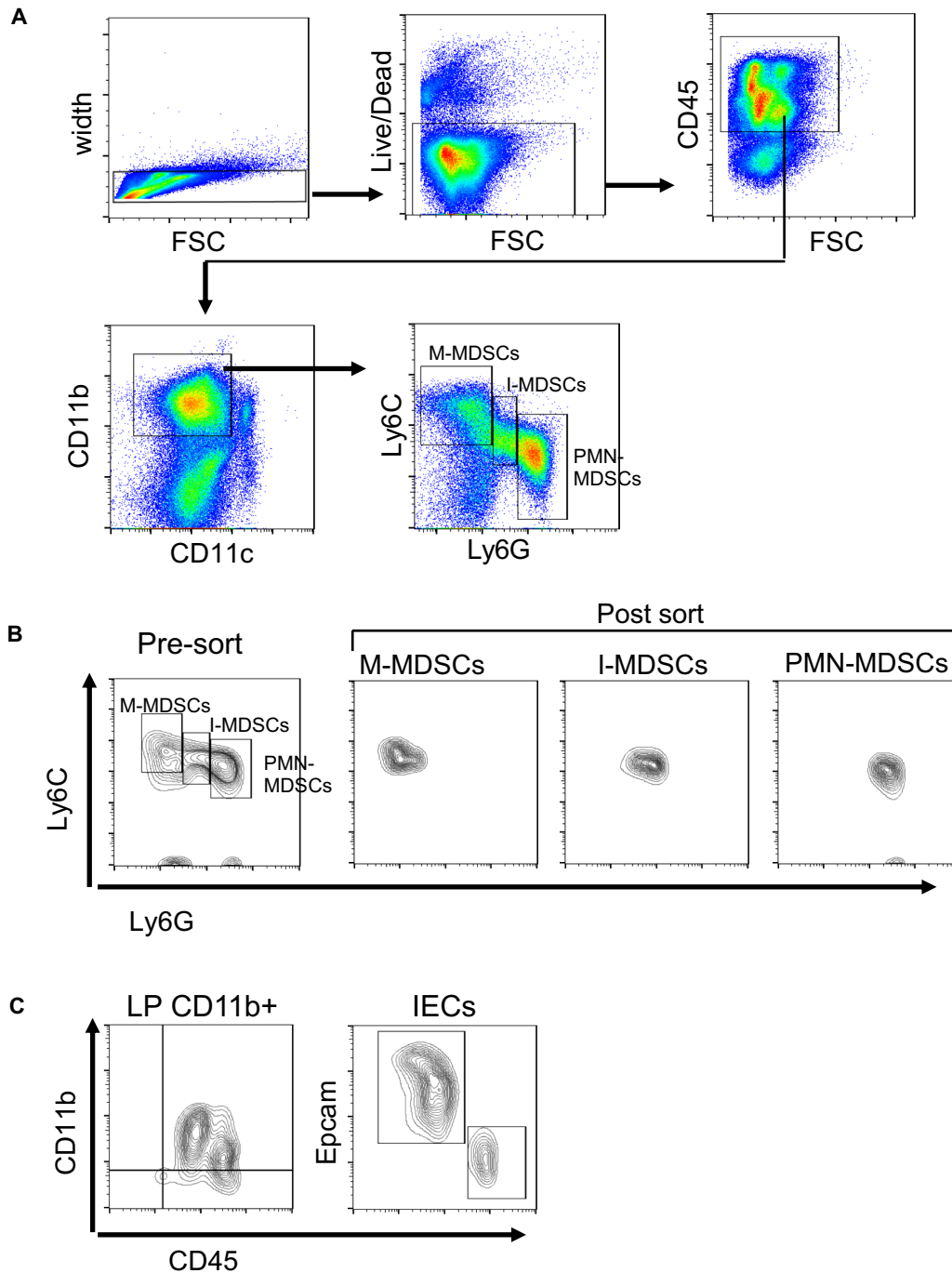


Supplementary figure 1



Supplementary figure 1. Gating strategy for $Apc^{Min/+}$ splenic MDSCs and purity of sorted cells. (A). Single live $CD45^+ CD11b^{hi} CD11c^{lo}$ splenocytes from $Apc^{Min/+}$ mice were gated into M-MDSCs ($CD11b^+ Ly6G^- Ly6C^+$), I-MDSCs ($CD11b^+ Ly6C^{int} Ly6G^{int}$), and PMN-MDSCs ($CD11b^+ Ly6G^+ Ly6C^0$). **(B)**, Purity of MDSC subsets sorted from live $Apc^{Min/+}$ splenocytes. **(C)**, Purity of sorted $CD11b^+$ cells from LP lymphocytes and IECs isolated from small intestine of a WT mouse.