

Table S1. List of bacterial strains and their genome accession numbers used to calculate average nucleotide identities

Bacterial strain	NCBI genome assembly identifier
<i>Arcobacter butzleri</i> RM4018 ^T	GCF_000014025.1
<i>Campylobacter armoricus</i> CA656 ^T	GCF_006176165.1
<i>Campylobacter avium</i> LMG 24591 ^T	GCF_002238335.1
<i>Campylobacter blaseri</i> 17S00004-5 ^T	GCF_003015205.1
<i>Campylobacter coli</i> CCUG 11283 ^T	GCF_008802085.1
<i>Campylobacter concisus</i> ATCC 33237 ^T	GCF_001298465.1
<i>Campylobacter corcagiensis</i> CIT 045 ^T	GCF_000597805.1
<i>Campylobacter cuniculorum</i> DSM 23162 = LMG 24588 ^T	GCF_002104335.1
<i>Campylobacter curvus</i> DSM 6644 ^T	GCF_000376325.1
<i>Campylobacter fetus</i> ATCC 27374 ^T	GCF_001816265.1
<i>Campylobacter geochelonis</i> RC20 ^T	GCF_900063025.1
<i>Campylobacter gracilis</i> ATCC 33236 ^T	GCF_001190745.1
<i>Campylobacter helveticus</i> ATCC 51209 ^T	GCF_002080395.1
<i>Campylobacter hepaticus</i> HV10 ^T	GCF_001687475.2
<i>Campylobacter hominis</i> ATCC BAA-381	GCF_000017585.1
<i>Campylobacter hyointestinalis</i> ATCC 35217 ^T	GCF_900116585.1
<i>Campylobacter iguaniorum</i> 1485E ^T	GCF_000736415.1
<i>Campylobacter insulaenigrae</i> NCTC 12927	GCF_000816185.1
<i>Campylobacter jejuni</i> subsp. <i>jejuni</i> ATCC 33560 ^T	GCF_003999645.1
<i>Campylobacter lanienae</i> NCTC 13004 ^T	GCF_002139935.1
<i>Campylobacter lari</i> ATCC 35221 ^T	GCF_900111465.1
<i>Campylobacter ornithocola</i> WBE38 ^T	GCF_001705345.1
<i>Campylobacter peloridis</i> LMG 23910 ^T	GCF_000816785.1
<i>Campylobacter pinnipediorum</i> subsp. <i>pinnipediorum</i> RM17260 ^T	GCF_002021925.1
<i>Campylobacter rectus</i> RM3267	GCF_000174175.1
<i>Campylobacter showae</i> CSUNSWCD	GCF_000313615.1
<i>Campylobacter sputorum</i> bv. <i>sputorum</i> LMG 7795 ^T	GCF_008245005.1
<i>Campylobacter subantarcticus</i> LMG 24377 ^T	GCF_000816305.1
<i>Campylobacter upsaliensis</i> DSM 5365 ^T	GCF_000620965.1
<i>Campylobacter ureolyticus</i> DSM 20703 ^T	GCF_000374605.1
<i>Campylobacter volucris</i> LMG 24380 ^T	GCF_008245045.1
<i>Campylobacter troglodytis</i> MIT 05-9149A	GCF_006864425.1

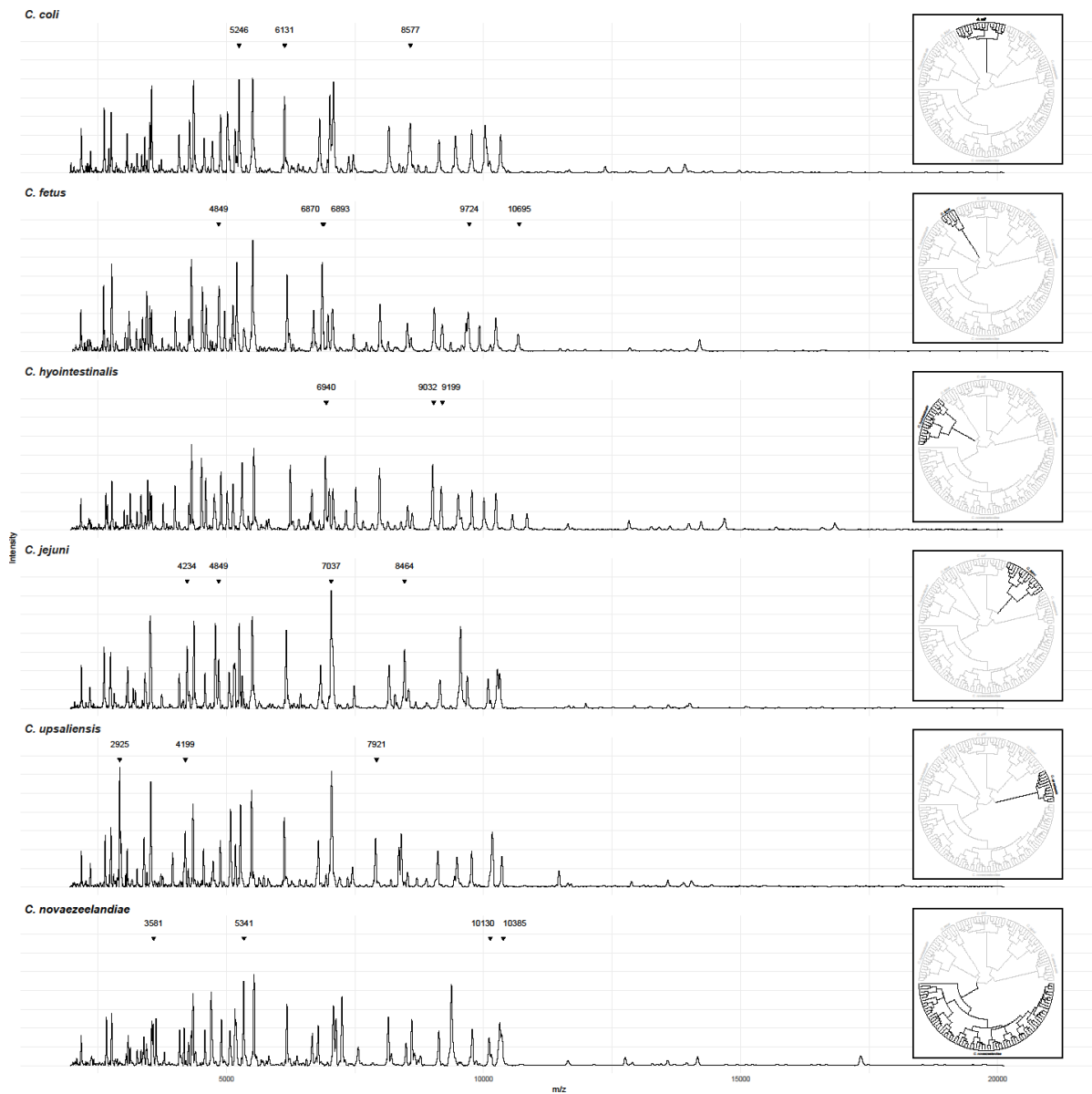


Figure S1. Representative averaged MALDI-TOF spectra. Highlighted peaks are discriminant for *C. novaezeelandiae* sp. nov. On the right side of the spectra are proteotyping-based dendrograms with the relevant species positions highlighted.