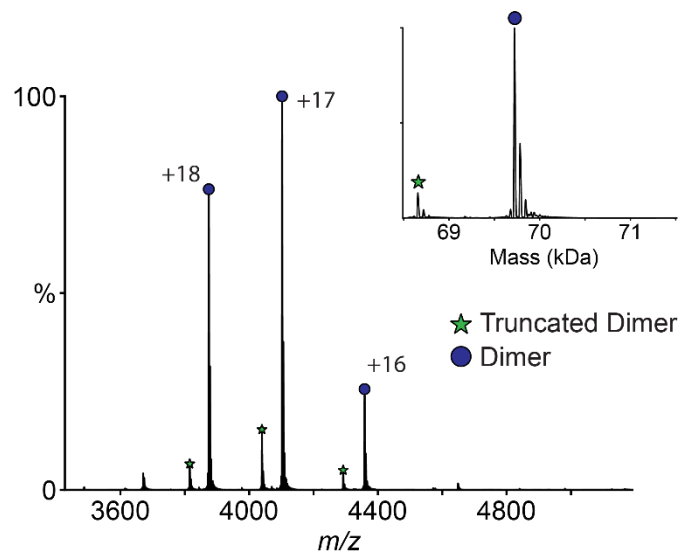


Supplementary information, Figure S1



Supplementary information Fig. 1: Native mass spectrum of SARS-CoV-2 M^{pro}.

Native mass spectrum of SARS-CoV-2 M^{pro} with 4 mM DTT shows a dimer (*blue circle*) with a small amount of truncated dimer where one subunit has lost the C-terminal His tag (*green star*). The primary charge states are labeled, and the inset shows the deconvoluted zero-charge mass distribution. The deconvoluted mass for the M^{pro} dimer is 69,722 Da, which corresponding to the monomer mass of 34,861 Da.