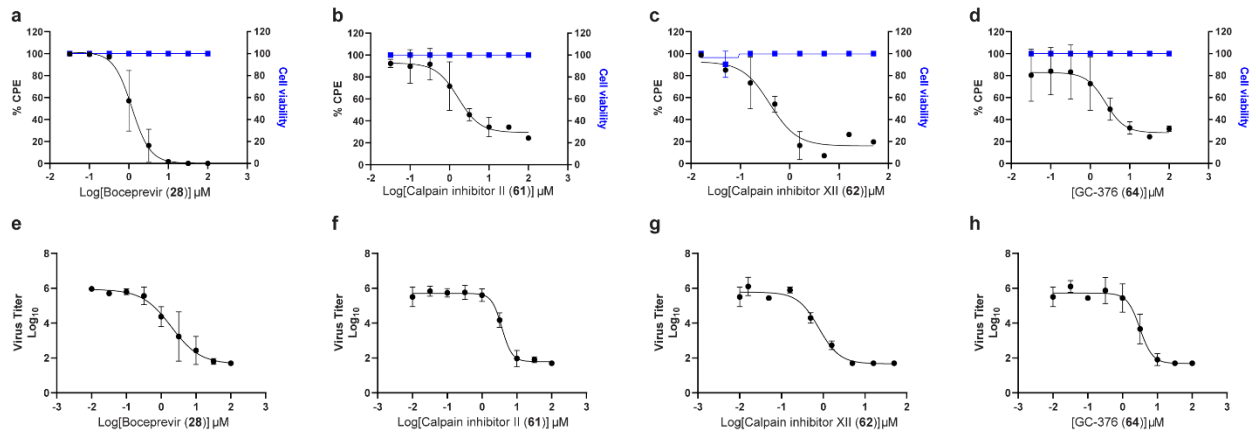


Supplementary information, Figure S2



Supplementary information Fig. 2: Curve fittings for the CPE and VYR assays.

a-d Curve fittings for the CPE assay results for boceprevir (28), calpain inhibitors II (61), XII (62), and GC-376 (64). The cellular cytotoxicity in Vero cells was shown in blue. **e-h** Curve fittings for the VYR assay results for boceprevir (28), calpain inhibitors II (61), XII (62), and GC-376 (64). The values were shown in Table 3.