

Supplementary Figure S1

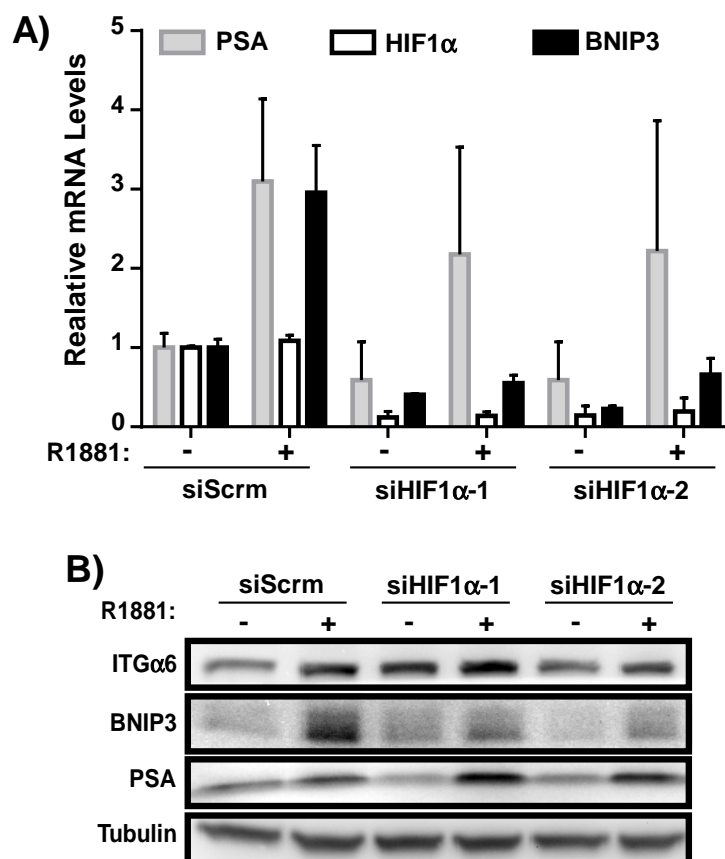
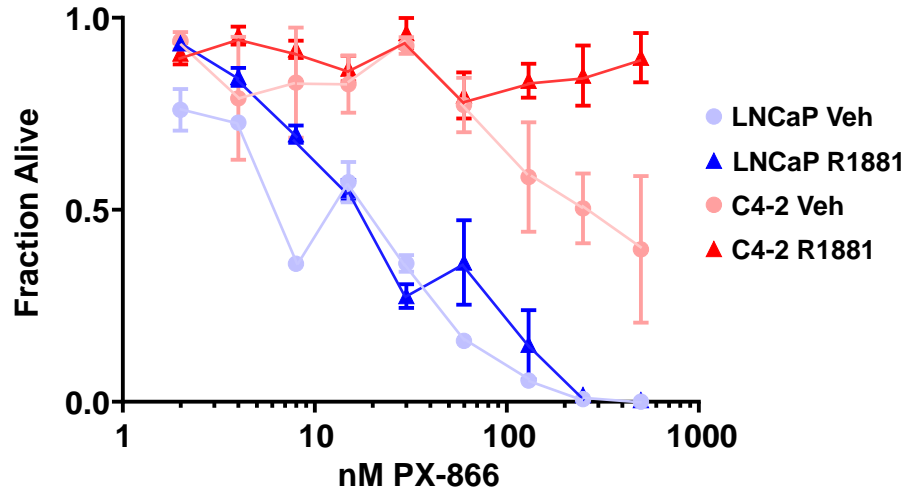


Figure S1: Bnip3 induction by androgen requires HIF1 α . **A)** C4-2 cells adherent to laminin were transfected with scrambled siRNA (siScrm) or two different siRNAs targeting HIF1 α (-1,-2). Levels of PSA, Bnip3, and HIF1 α mRNA with (+) and without (-) stimulation with 10nM R1881 for 24 h were measured by qRT-PCR. **B)** Cell lysates from C4-2 cells treated as in (A) were assessed for levels of expression of integrin α 6 (ITG α 6), Bnip3, PSA, and tubulin by immunoblotting.

Supplementary Figure S2



Supplementary Figure S2: CRPC C4-2 cell are 10x more resistant to PI3K inhibitor PX-866. LNCaP and C4-2 cells adherent to laminin were stimulated with (R1881) or without (Veh) 10nM R1881 for 24 h prior to and in the presence of increasing concentrations of PX-866. Cell viability was measured by trypan blue exclusion 48 h later. n=3, error bars = SD.

Supplementary Figure S3

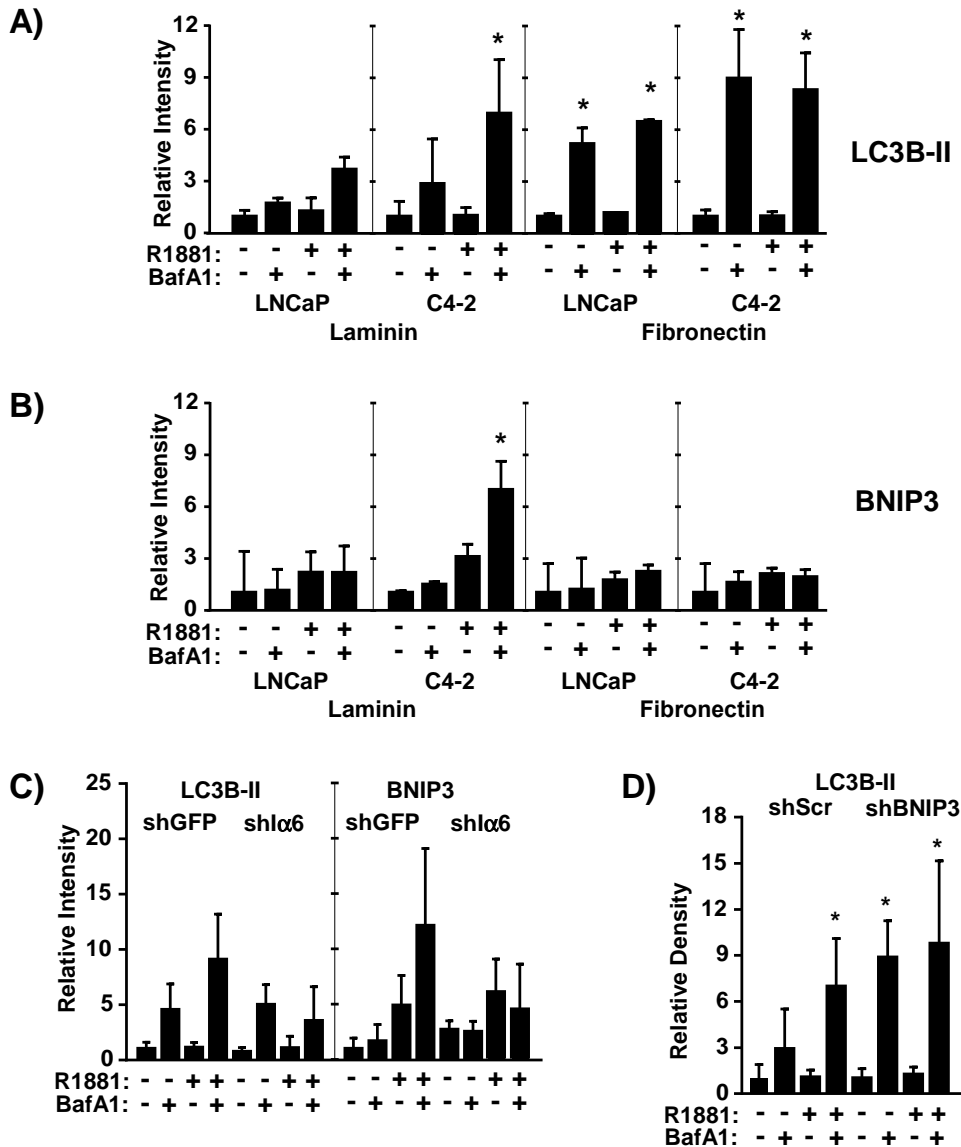


Figure S3: A, B) LNCaP and C4-2 cells adherent to laminin or fibronectin were stimulated with (+) or without (-) 10 nM R1881 for 24 h and in the presence of 100 ng/mL Bafilomycin A1 (BafA1) during the last 2 h. Levels of Bnip3, LC3B-I/II, and tubulin were assessed by immunoblotting. Quantification of (A) LC3B-II and (B) Bnip3 levels relative to tubulin on immunoblots from Figures 5C and 5D. **C)** Laminin-adherent C4-2 cells stably expressing an shRNA targeting integrin α 6 (shITG α 6) or a control shRNA to GFP were stimulated with (+) or without (-) 10nM R1881 for 24 h and in the presence of 100ng/mL Bafilomycin A1 (BafA1) during the last 2 h. Levels of Bnip3, LC3B-I/II, and tubulin were assessed by immunoblotting. Quantification of LC3B-II and Bnip3 levels relative to tubulin on immunoblots from Figure 6A. **D)** Laminin-adherent C4-2 cells transfected with siRNA targeting Bnip3 (siBnip3) or a control scrambled siRNA (siScrm) were stimulated with (+) or without (-) 10nM R1881 for 24 h and in the presence of 100ng/mL Bafilomycin A1 (BafA1) during the last 2 h. Levels of Bnip3, LC3B-I/II, and GAPDH were assessed by immunoblotting. Quantification of LC3B-II levels relative to tubulin on immunoblots from Figure 6B. * $p < 0.05$, $n=3$, error bars = SD

Supplementary S4

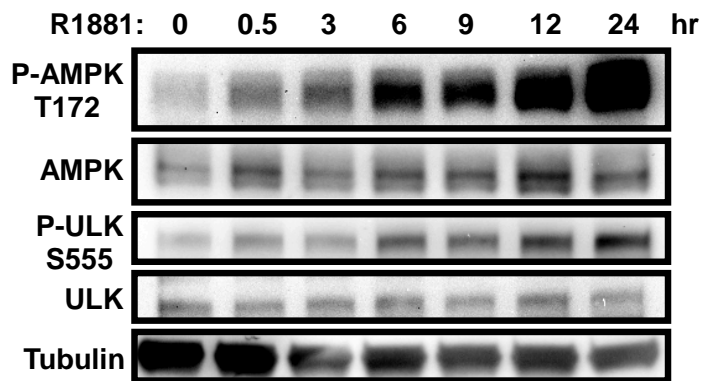


Figure S4: C4-2 cells adherent to laminin were treated with 10 nM R1881 over a 24 h time course. Levels of activated AMPK (P-AMPK-T172), total AMPK, activated ULK1 (P-ULK-S555), total ULK1 and tubulin were assessed by immunoblotting.