

## Supplementary Information

# Flavanone-Based Fluorophores with Aggregation-Induced Emission Enhancement Characteristics for Mitochondria-Imaging and Zebrafish-Imaging

Na Li <sup>1</sup>, Liyan Liu <sup>1</sup>, Huiqing Luo <sup>1</sup>, Huaqiao Wang <sup>2</sup>, Depo Yang <sup>1</sup> and Feng He <sup>1,\*</sup>

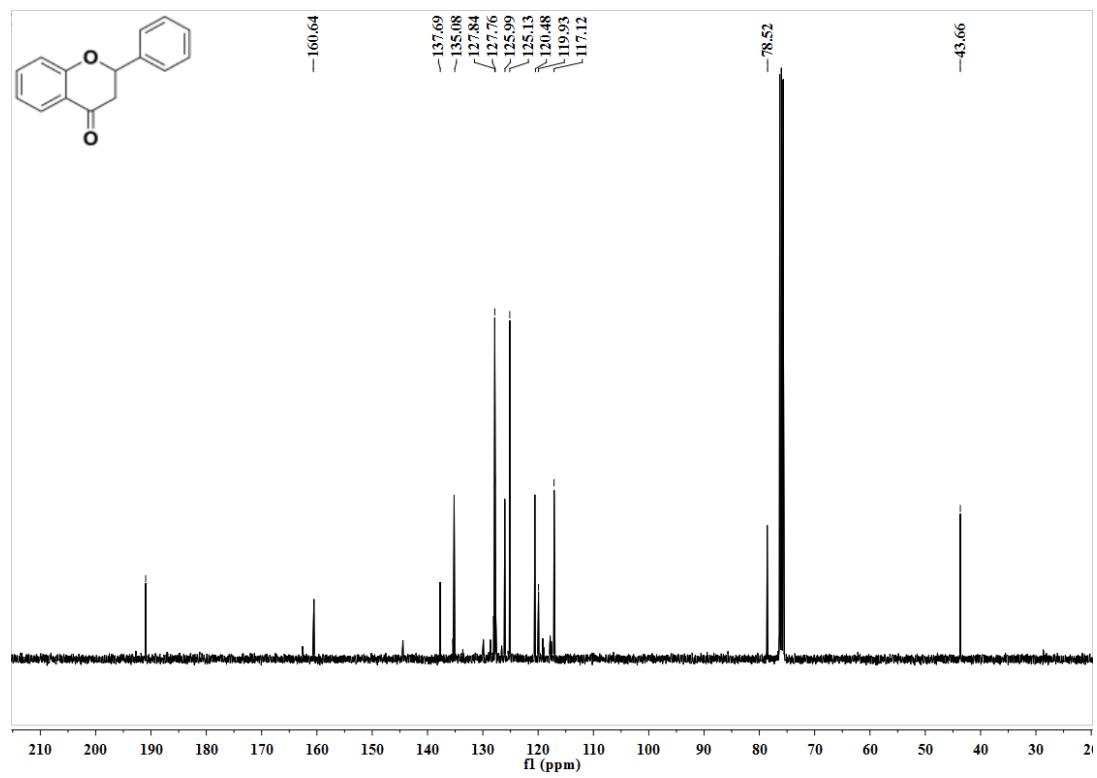
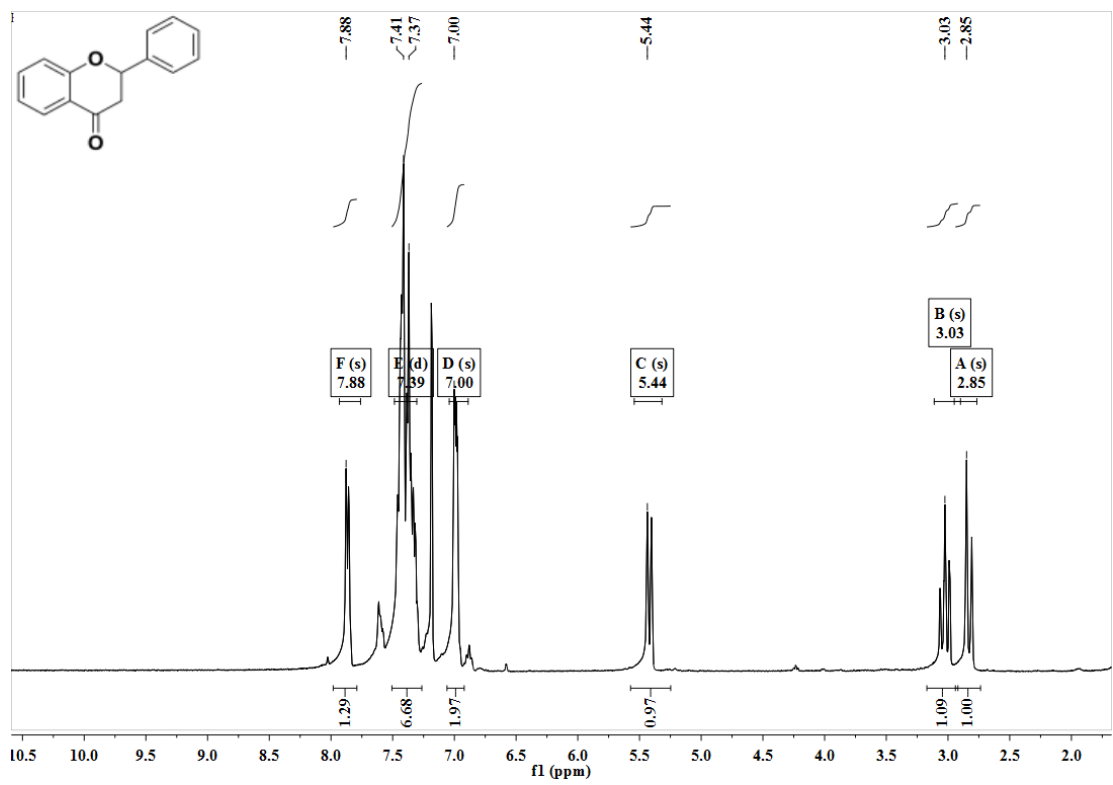
<sup>1</sup> School of Pharmaceutical Science, Sun Yat-sen University, Guangzhou 510006, China; lina49@mail2.sysu.edu.cn (N.L.); liuly37@mail2.sysu.edu.cn (L.L.); luohq8@mail2.sysu.edu.cn (H.L.); lssydp@mail.sysu.edu.cn (D.Y.)

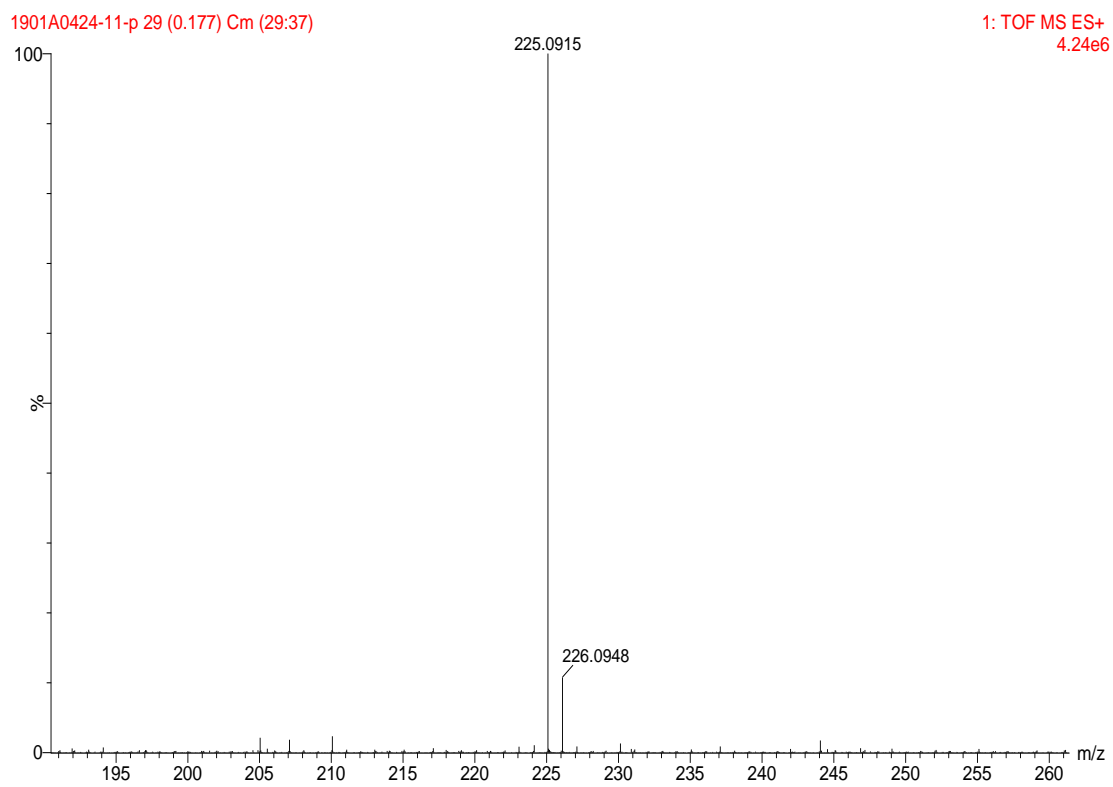
<sup>2</sup> Department of Anatomy and Neurobiology, Zhongshan School of Medicine, Sun Yat-sen University, Guangzhou 510006, China; wanghq@mail.sysu.edu.cn

\* Correspondence: hefeng@mail.sysu.edu.cn; Tel.: +86-203-994-3036

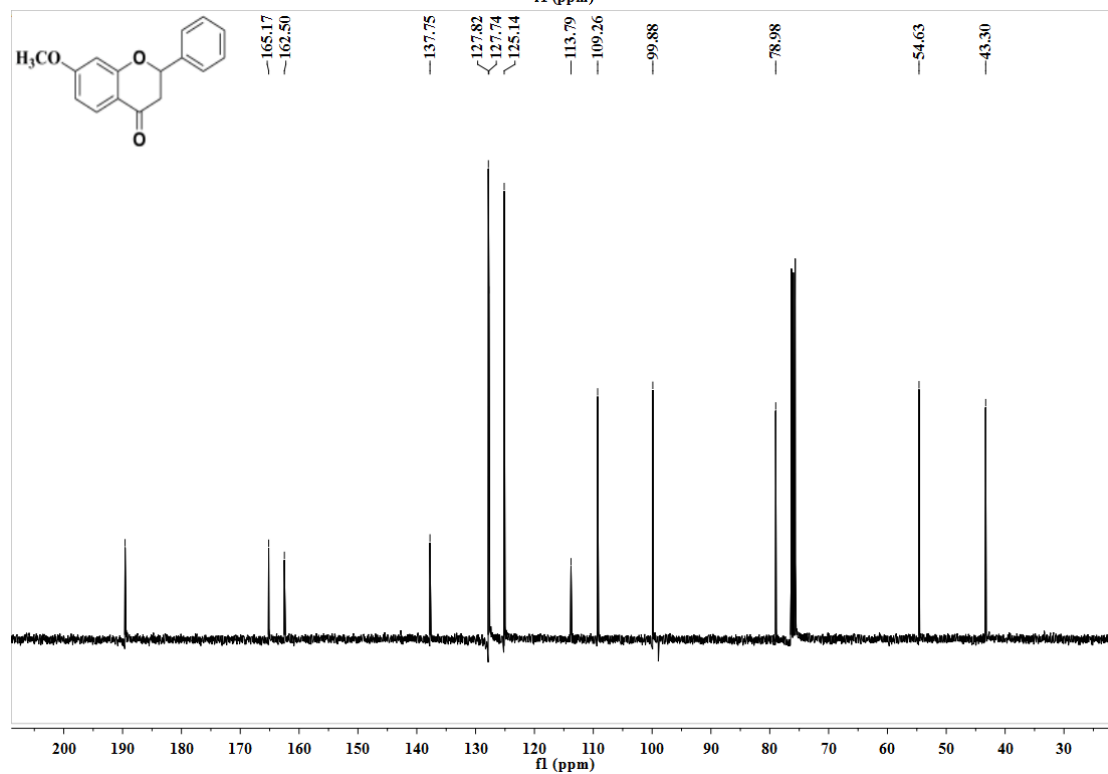
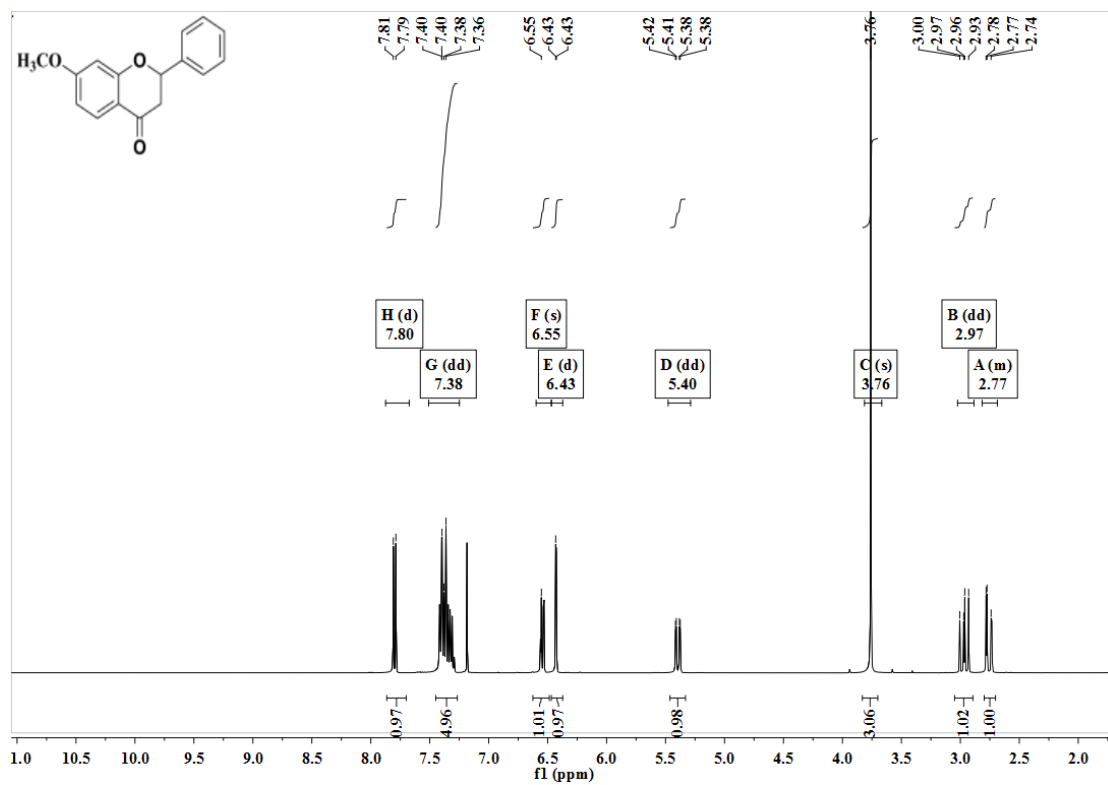
## Table of Contents

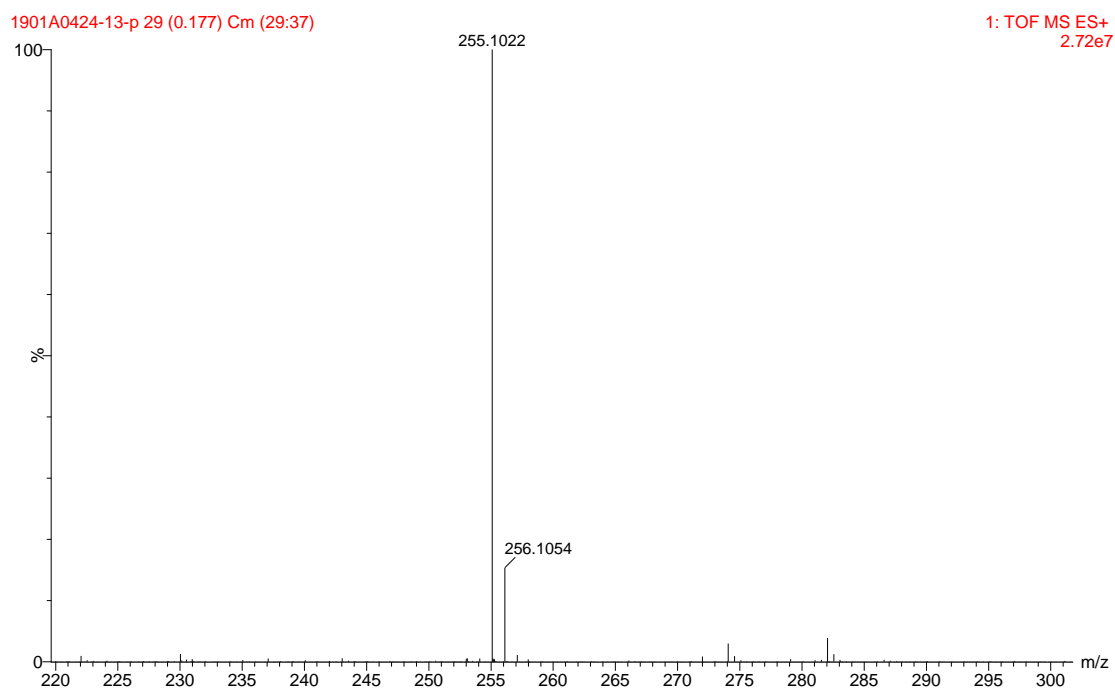
$^1\text{H}$ , $^{13}\text{C}$ NMR spectra and ESI-MS analysis for compound <b>1</b> .....	Figure S1
$^1\text{H}$ , $^{13}\text{C}$ NMR spectra and ESI-MS analysis for compound <b>2</b> .....	Figure S2
$^1\text{H}$ , $^{13}\text{C}$ NMR spectra and ESI-MS analysis for compound <b>3</b> .....	Figure S3
$^1\text{H}$ , $^{13}\text{C}$ NMR spectra and ESI-MS analysis for compound <b>4</b> .....	Figure S4



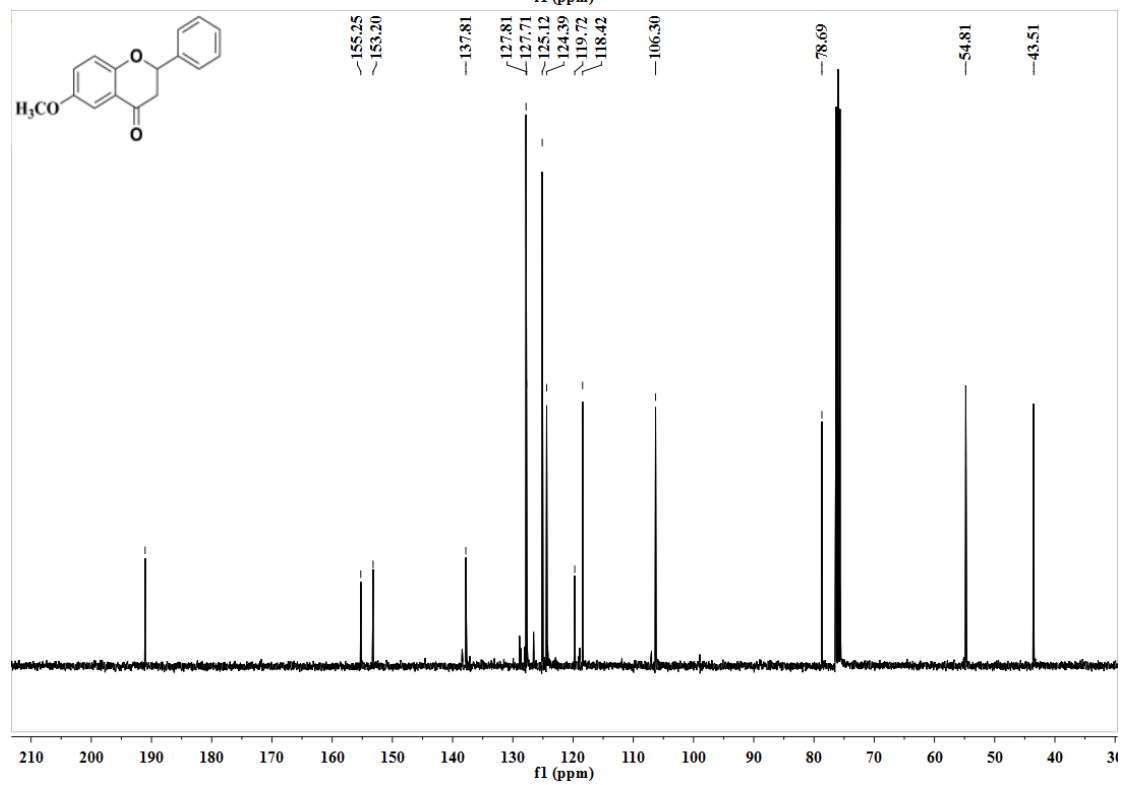
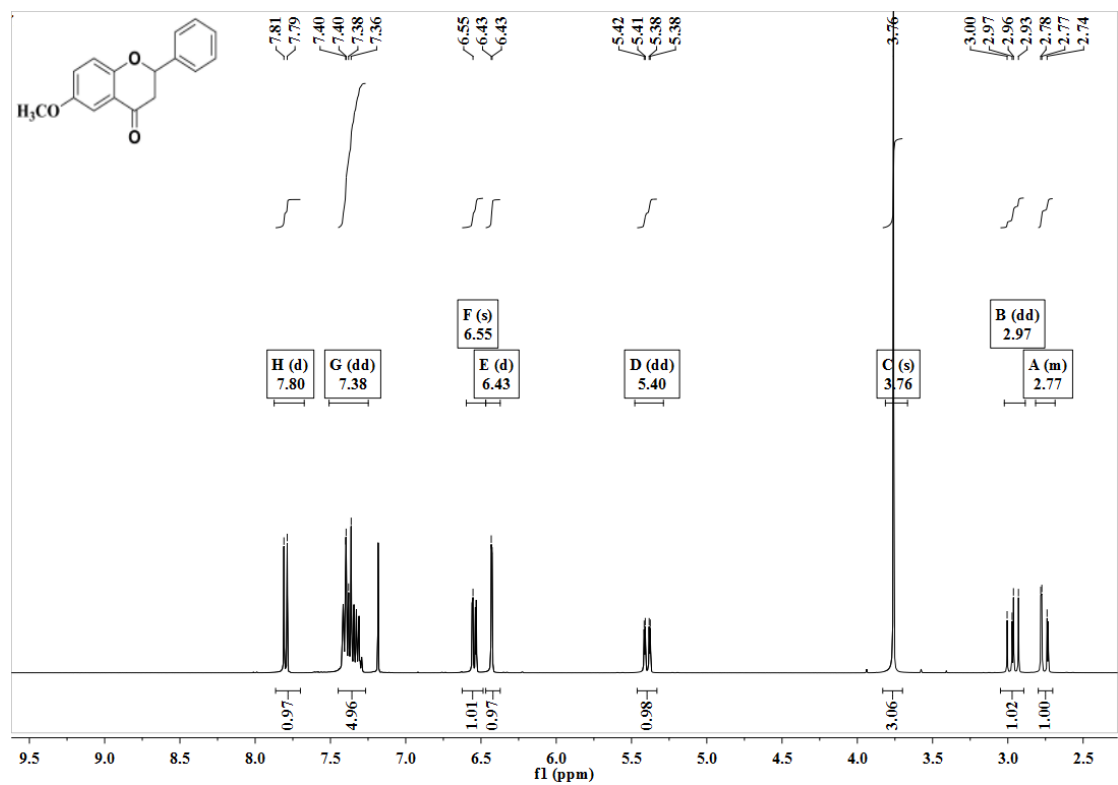


**Figure S1.**  $^1\text{H}$ ,  $^{13}\text{C}$  NMR spectra and ESI-MS analysis for compound **1**.



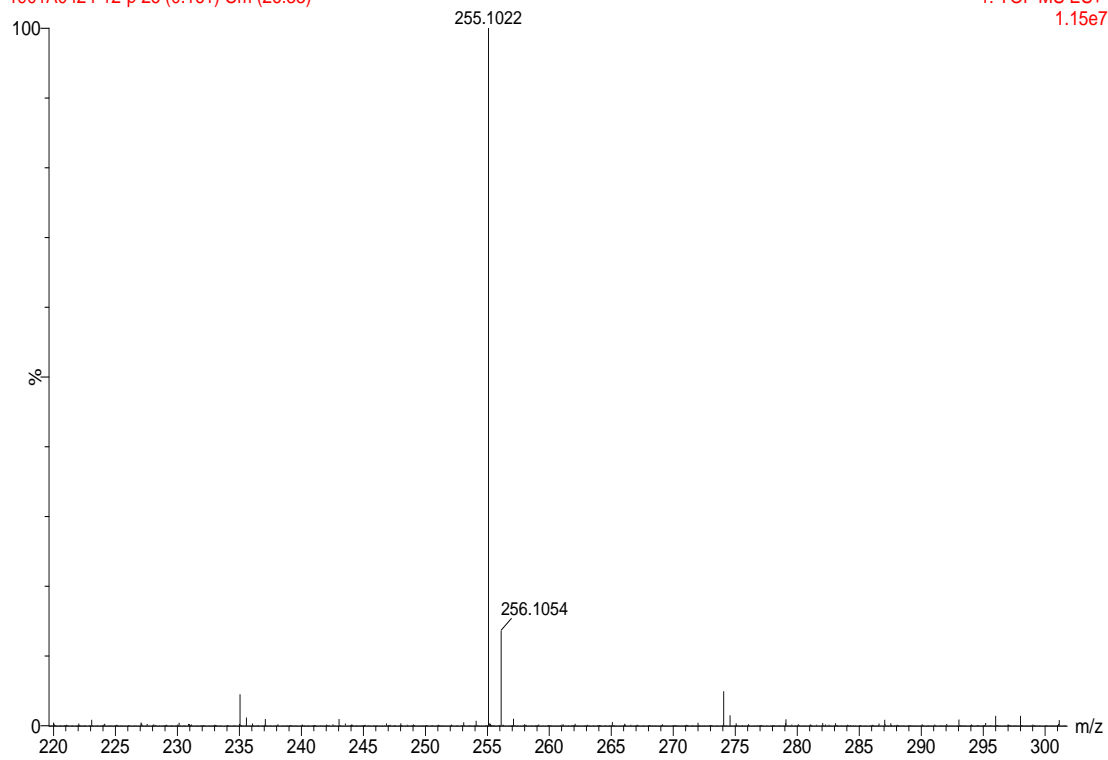


**Figure S2.**  $^1\text{H}$ ,  $^{13}\text{C}$  NMR spectra and ESI-MS analysis for compound **2**.



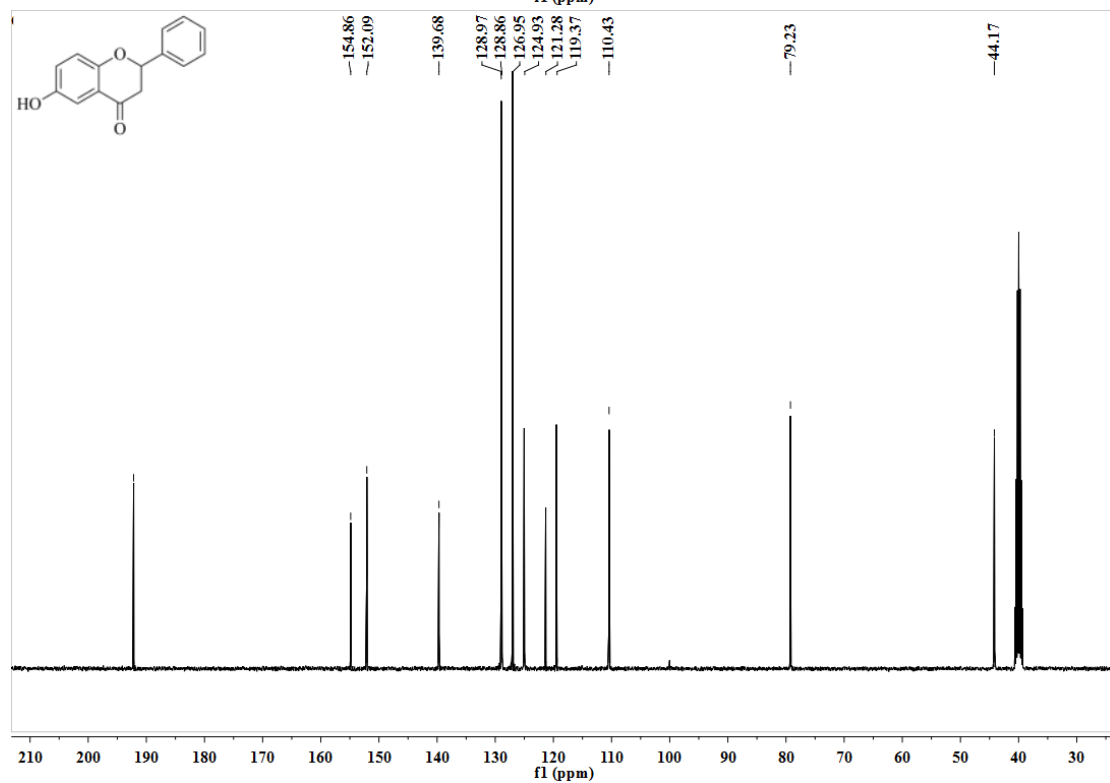
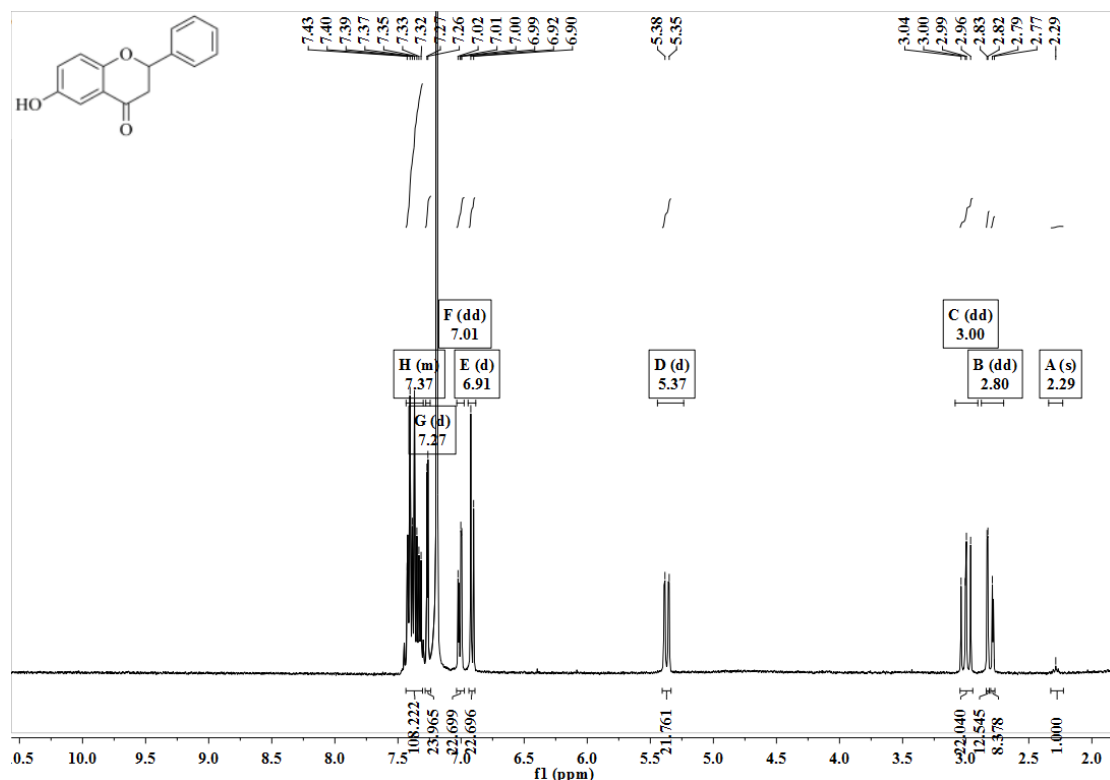
1901A0424-12-p 26 (0.161) Cm (26:33)

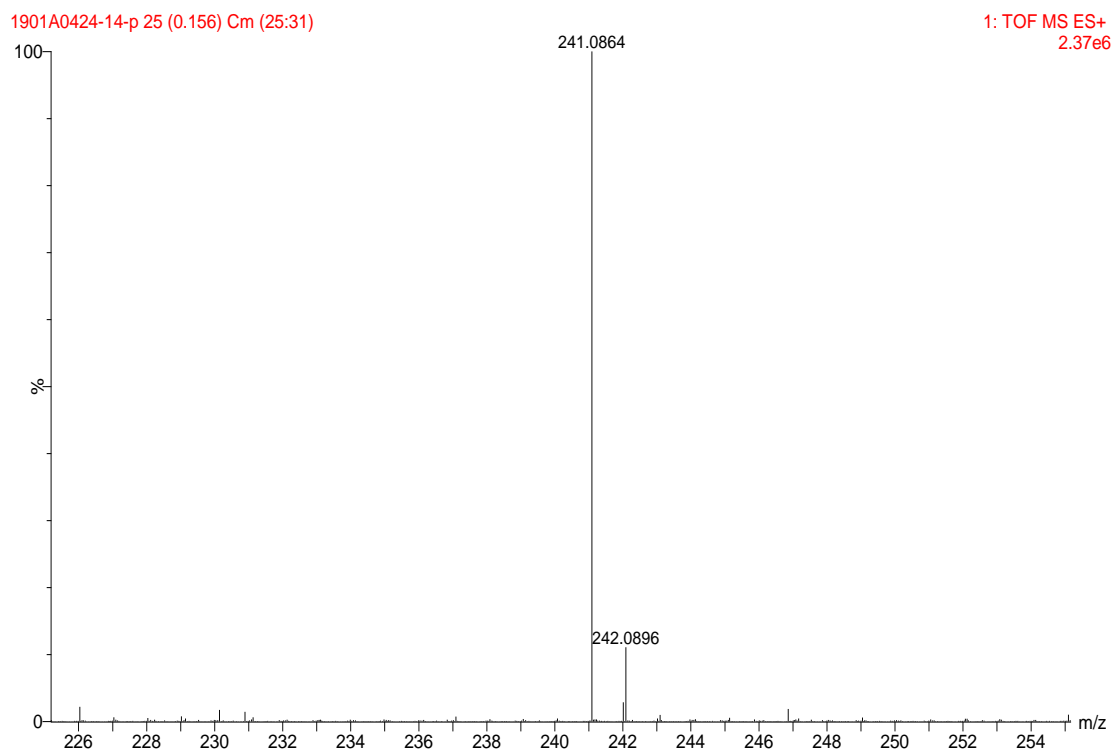
1: TOF MS ES+  
1.15e7



**Figure S3.**  $^1\text{H}$ ,  $^{13}\text{C}$  NMR spectra and ESI-MS analysis for compound **3**.







**Figure S4.**  $^1\text{H}$ ,  $^{13}\text{C}$  NMR spectra and ESI-MS analysis for compound **4**.