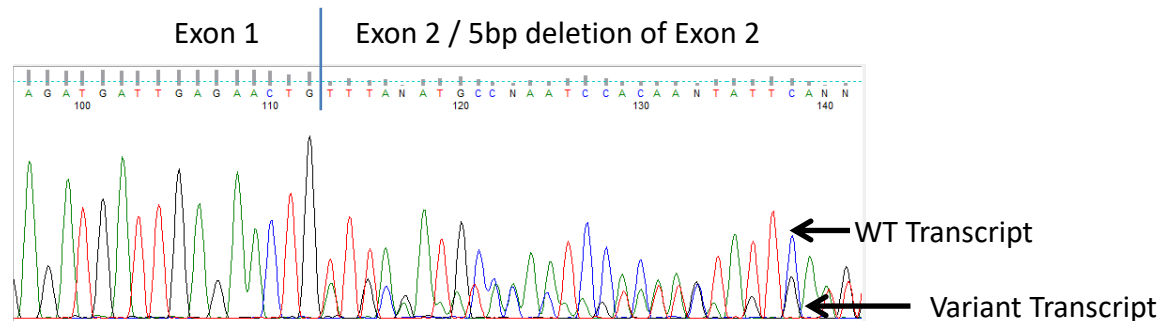
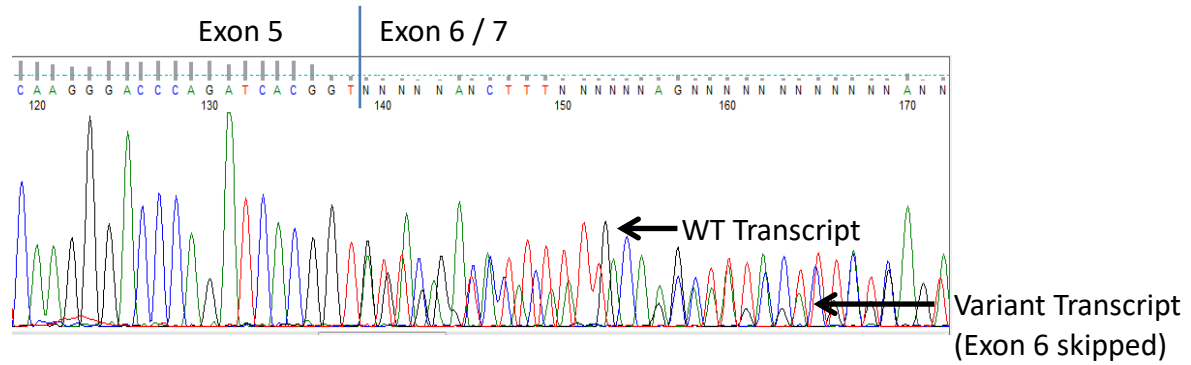


Supplementary Figure. Sequence traces showing aberrant/alternative splicing

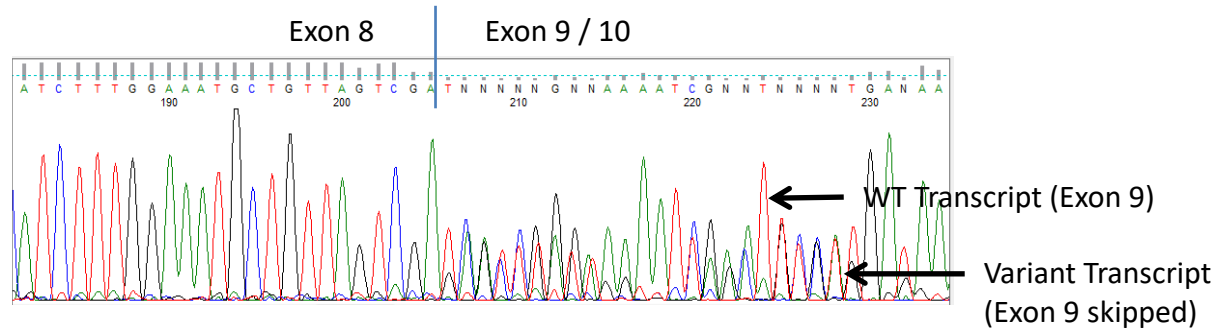
MLH1 c.117-2A>G



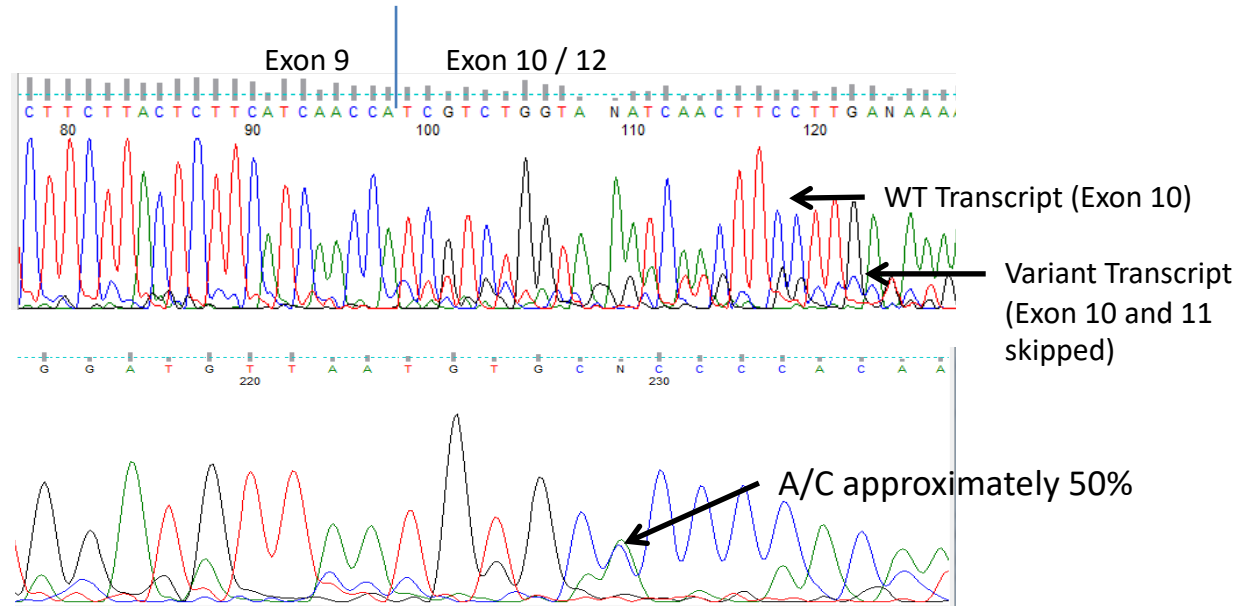
MLH1 c.454-13A>G



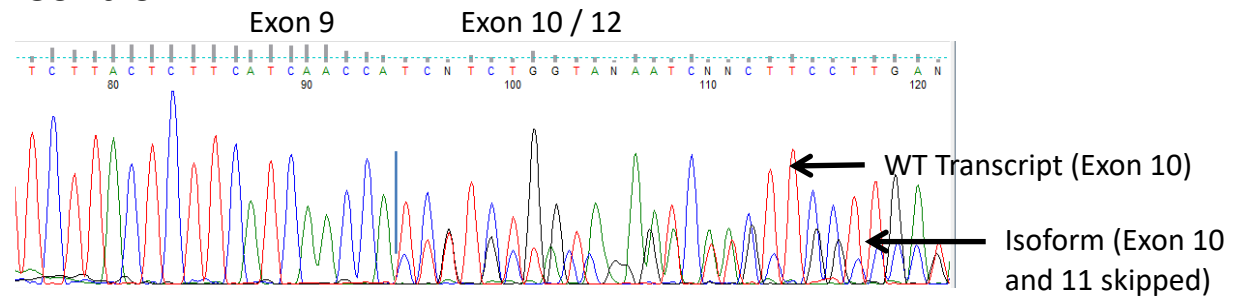
MLH1 c.790+2T>A



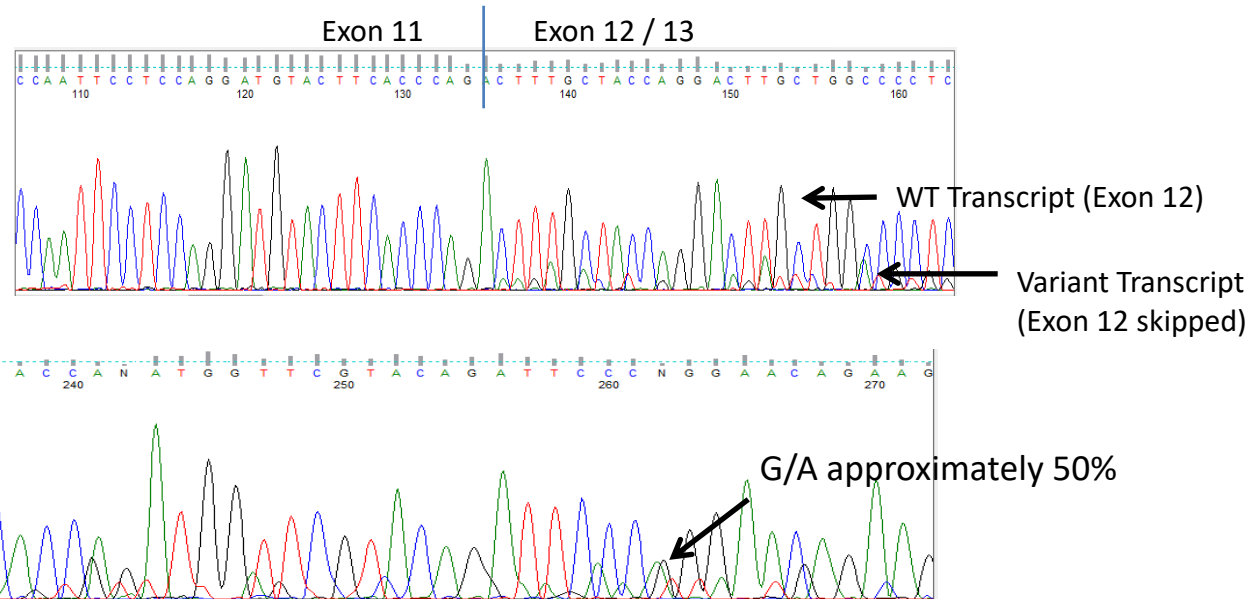
MLH1 c.923A>C



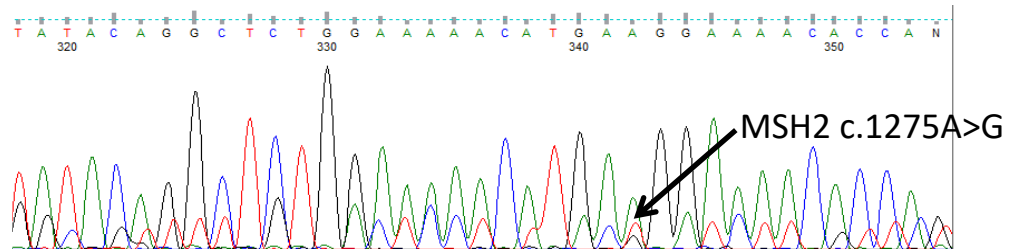
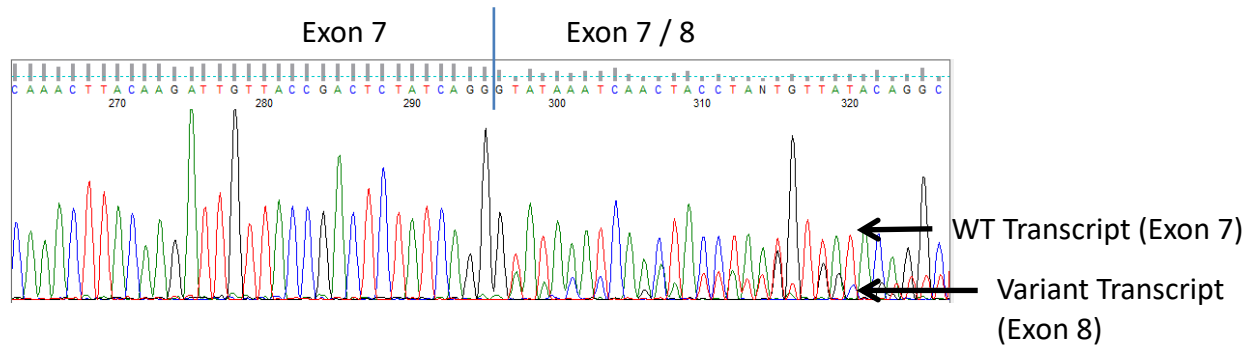
Control



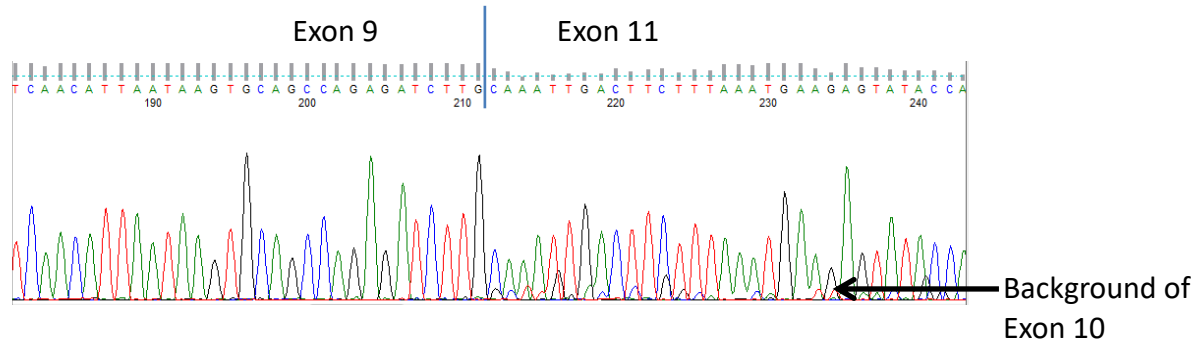
MLH1 c.1166G>A



MSH2 c.1275A>G

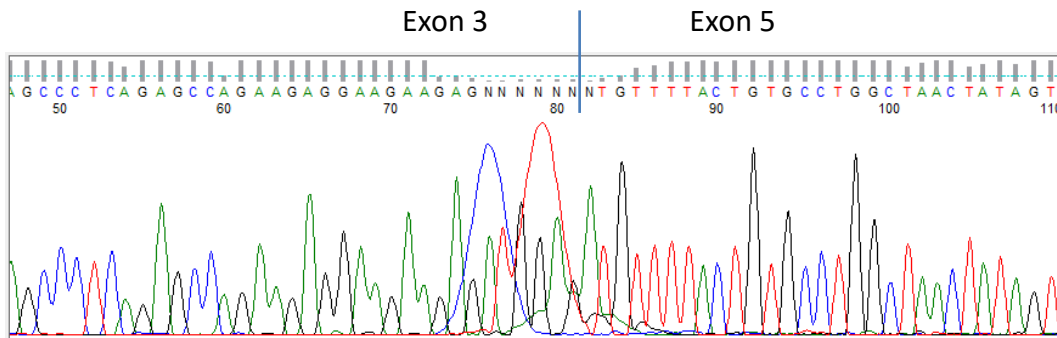


MSH2 c.1661+5G>C



MSH6 c.2314C>T

(Exon 4 skipped in Carrier and Control)



Wild Type Transcript in variant carrier

