

## Supplementary Online Content

Jeffery MM, D'Onofrio G, Paek H, et al. Trends in emergency department visits and hospital admissions in health care systems in 5 states in the first months of the COVID-19 pandemic in the US. *JAMA Intern Med*. Published online August 3, 2020.

doi:10.1001/jamainternmed.2020.3288

**eFigure 1.** Daily Emergency Department Visit and Admission Counts in 5 EDs in NY

**eFigure 2.** Daily Emergency Department Visit and Admission Counts in 5 EDs in CO

**eFigure 3.** Daily Emergency Department Visit and Admission Counts in 4 EDs in CT

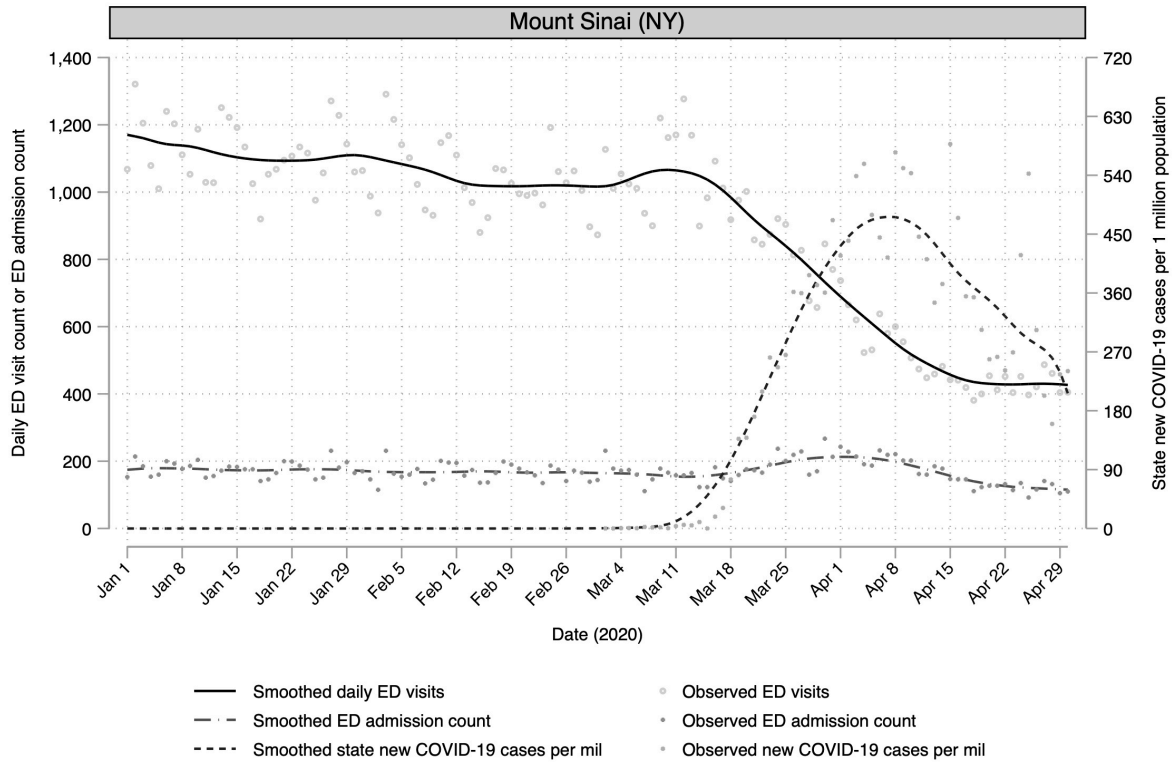
**eFigure 4.** Daily Emergency Department Visit and Admission Counts in 5 EDs in MA

**eFigure 5.** Daily Emergency Department Visit and Admission Counts in 5 EDs in NC

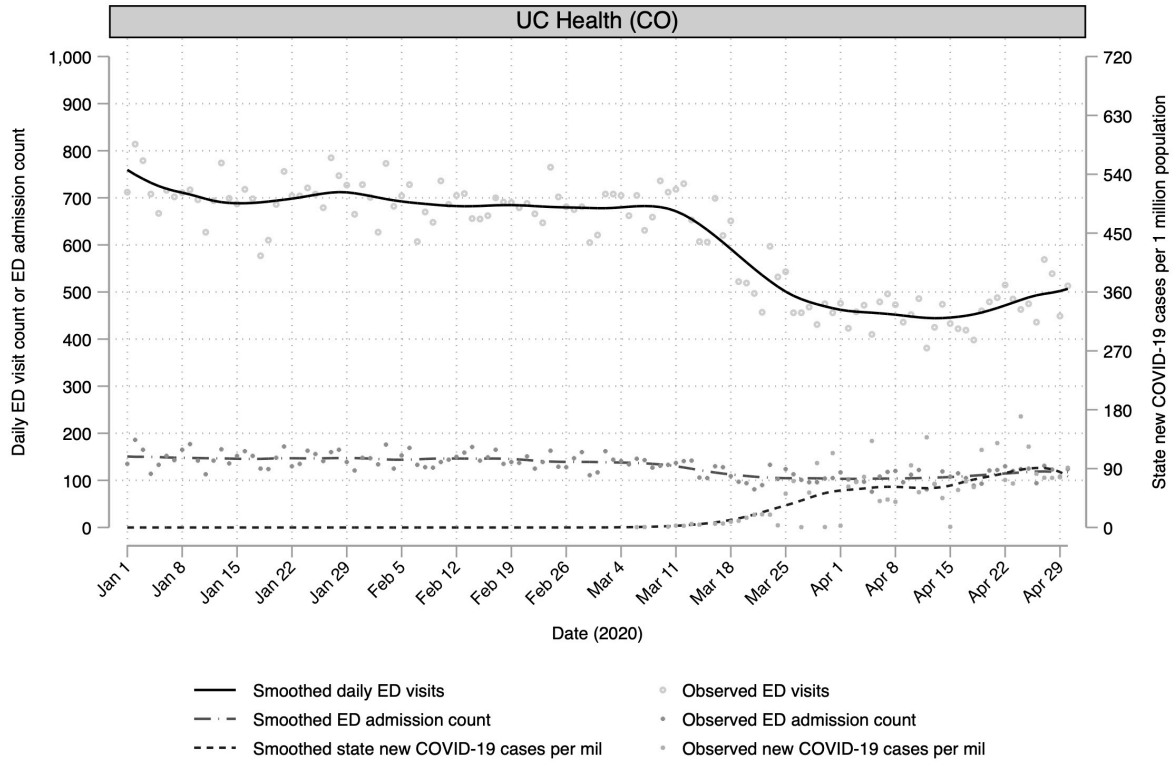
This supplementary material has been provided by the authors to give readers additional information about their work.

**Open Access:** This is an open access article distributed under the terms of the CC-BY License.

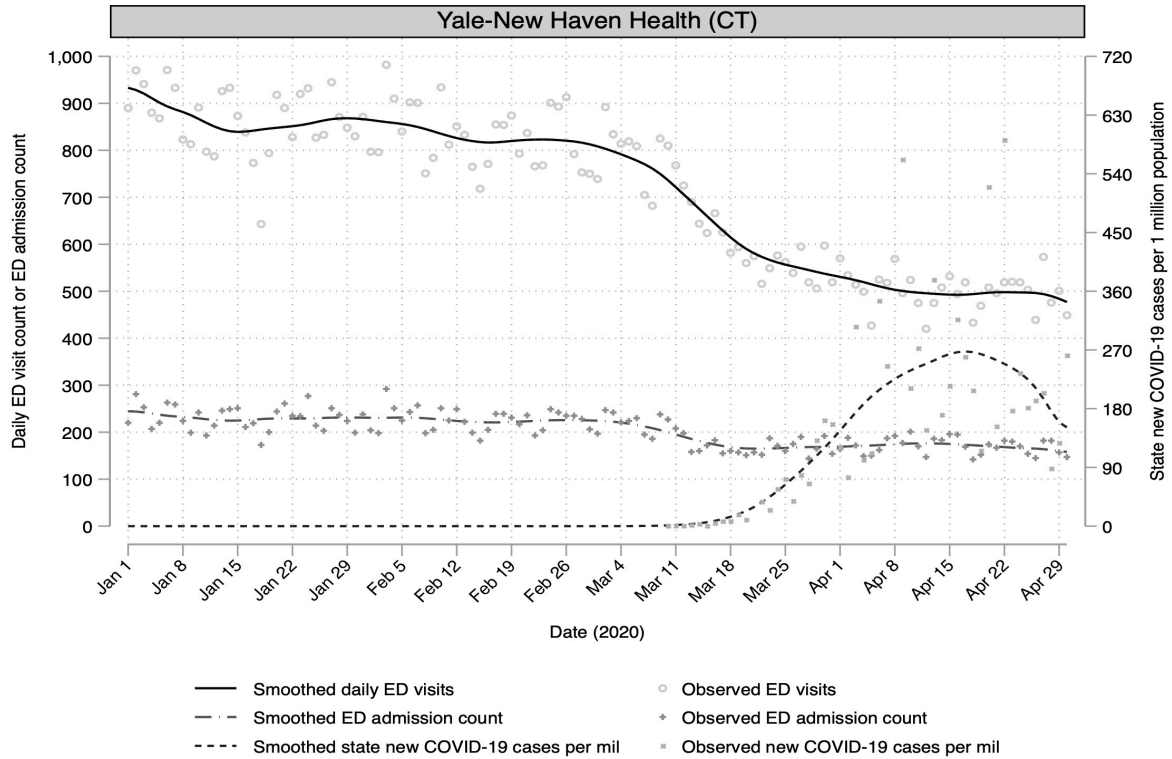
**eFigure 1.** Daily Emergency Department Visit and Admission Counts in 5 EDs in NY  
*ED visit counts, ED admission counts, and new daily confirmed COVID-19 cases per 1 million population: January 1 through April 30, 2020. Lines represent LOWESS smoothed curves. Scatterplot points represent observed values.*



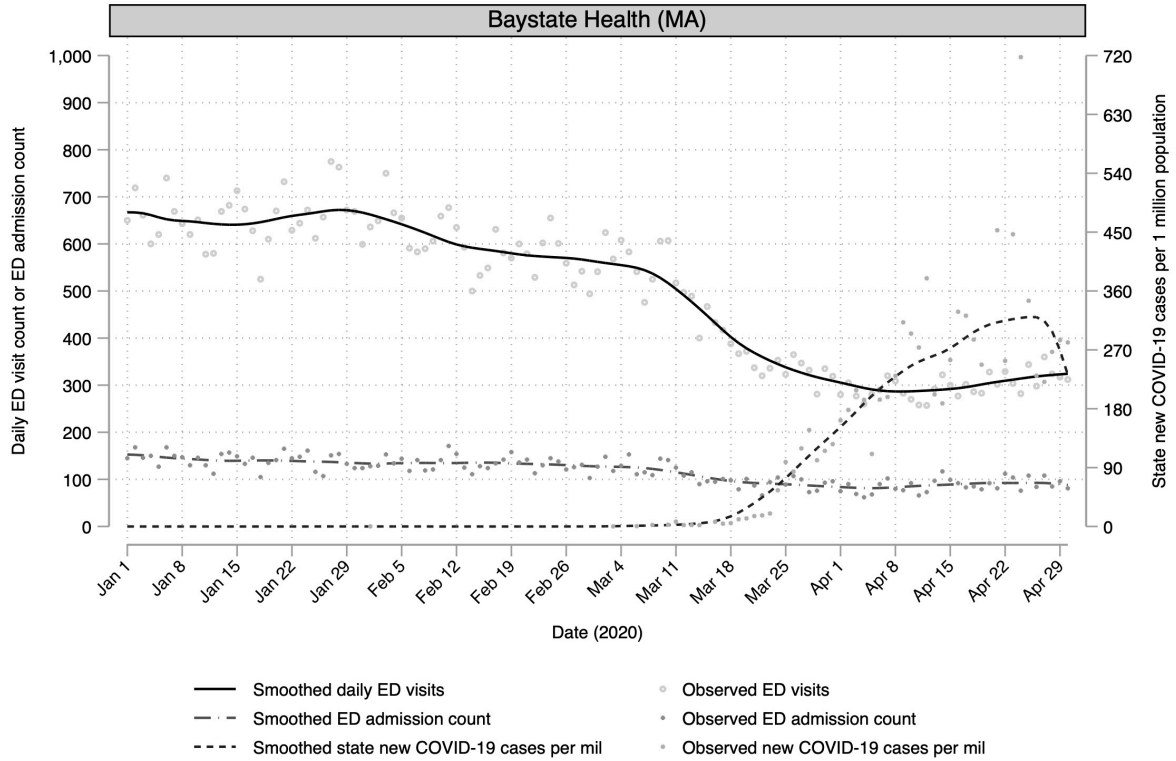
**eFigure 2.** Daily Emergency Department Visit and Admission Counts in 5 EDs in CO  
*ED visit counts, ED admission counts, and new daily confirmed COVID-19 cases per 1 million population: January 1 through April 30, 2020. Lines represent LOWESS smoothed curves. Scatterplot points represent observed values.*



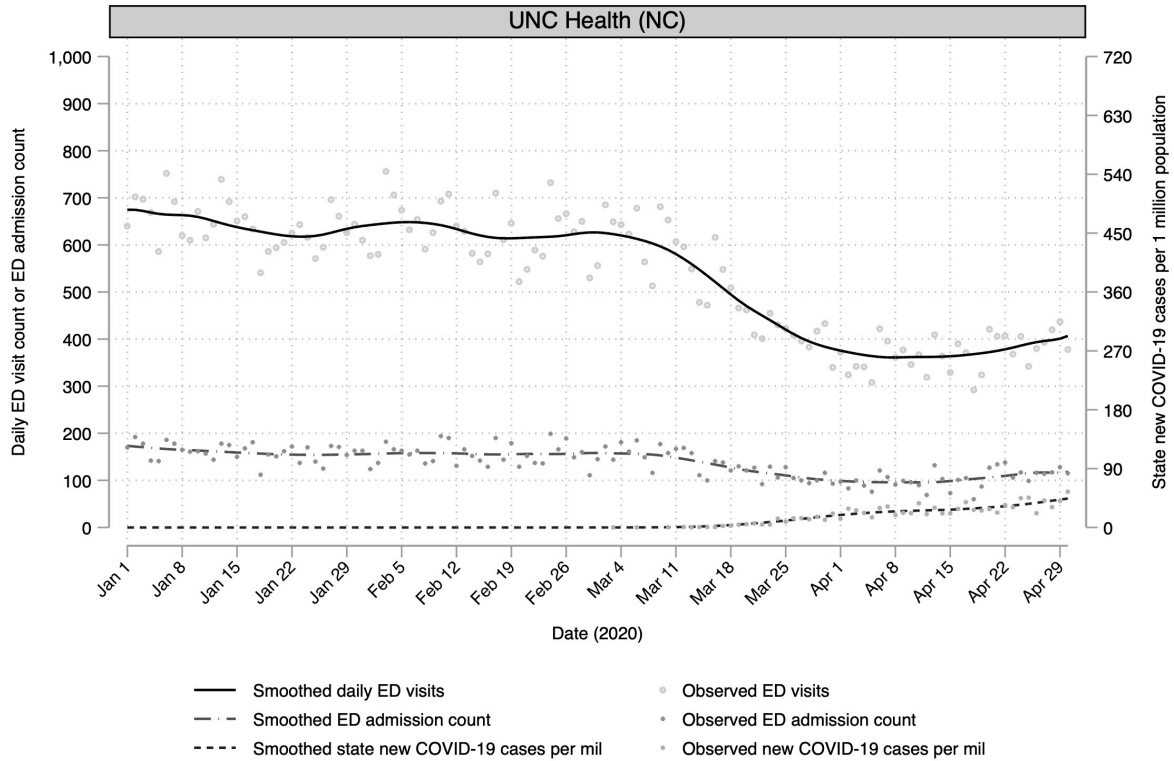
**eFigure 3.** Daily Emergency Department Visit and Admission Counts in 4 EDs in CT  
*ED visit counts, ED admission counts, and new daily confirmed COVID-19 cases per 1 million population: January 1 through April 30, 2020. Lines represent LOWESS smoothed curves. Scatterplot points represent observed values.*



**eFigure 4.** Daily Emergency Department Visit and Admission Counts in 5 EDs in MA  
*ED visit counts, ED admission counts, and new daily confirmed COVID-19 cases per 1 million population: January 1 through April 30, 2020. Lines represent LOWESS smoothed curves. Scatterplot points represent observed values.*



**eFigure 5.** Daily Emergency Department Visit and Admission Counts in 5 EDs in NC  
*ED visit counts, ED admission counts, and new daily confirmed COVID-19 cases per 1 million population: January 1 through April 30, 2020. Lines represent LOWESS smoothed curves. Scatterplot points represent observed values.*



**Supplemental Materials. Daily Emergency Department Visit and Admission Counts in 5 health systems in 5 states** ED visit counts, ED admission counts, and new daily confirmed COVID-19 cases per 1 million population: January 1 through April 30, 2020. Lines represent LOWESS smoothed curves. Scatterplot points represent observed values.

Figure 1. Daily Emergency Department Visit and Admission Counts in 5 EDs in CO  
Figure 1b. Daily Emergency Department Visit and Admission Counts in 4 EDs in CT  
Figure 1c. Daily Emergency Department Visit and Admission Counts in 5 EDs in MA  
Figure 1d. Daily Emergency Department Visit and Admission Counts in 5 EDs in NY  
Figure 1e. Daily Emergency Department Visit and Admission Counts in 5 EDs in NC