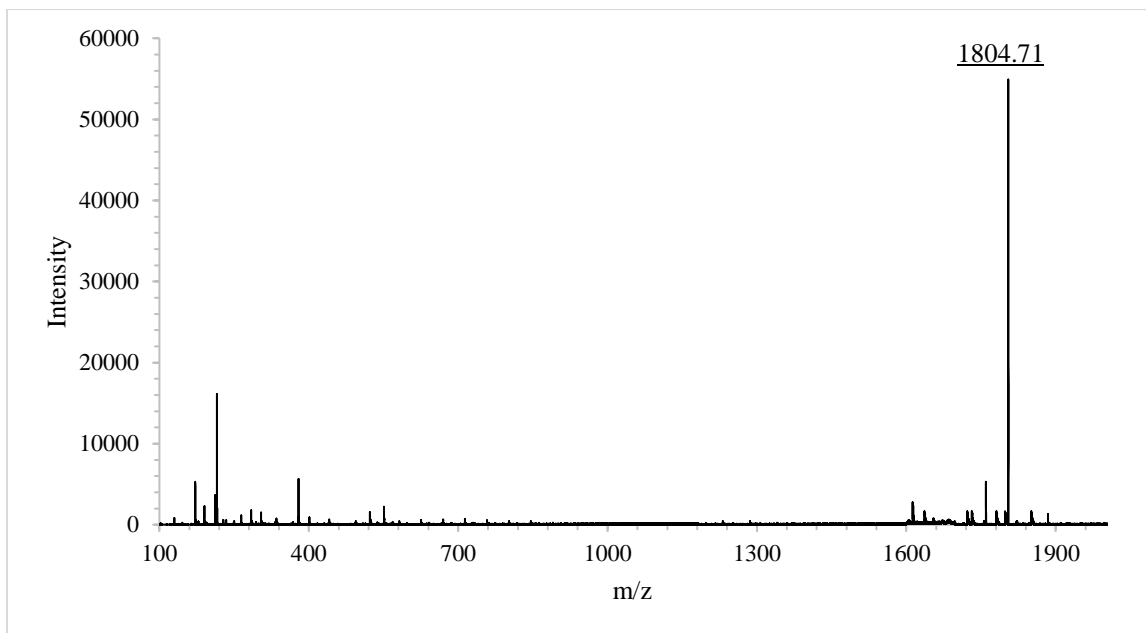
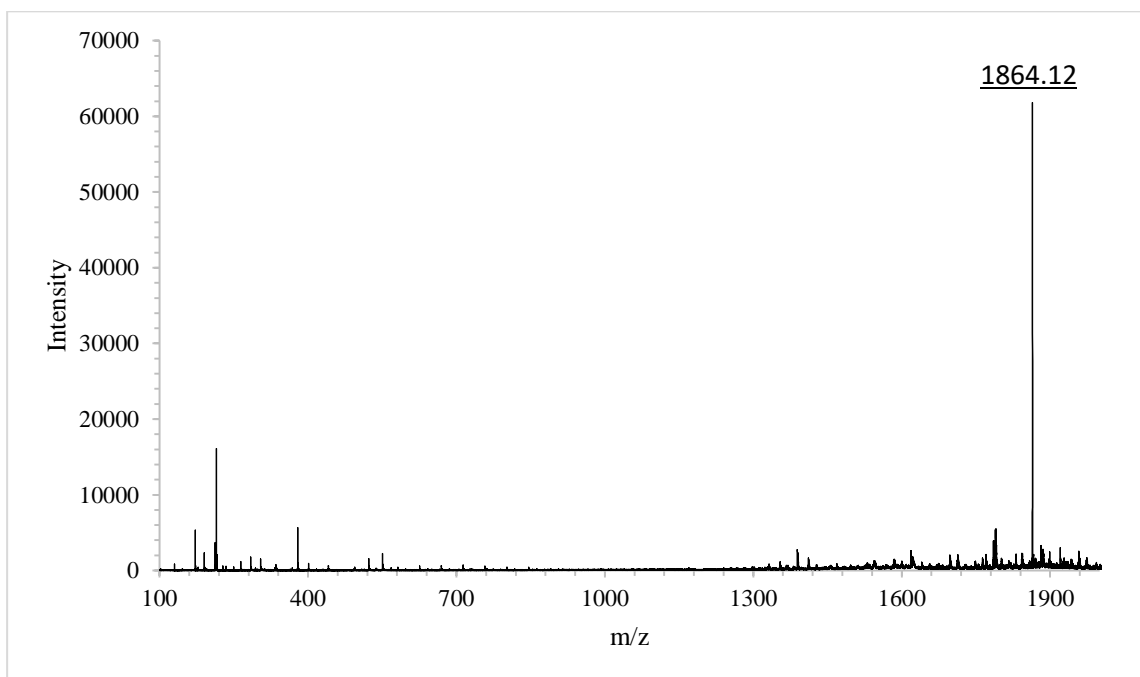


## SUPPLEMENTARY MATERIALS

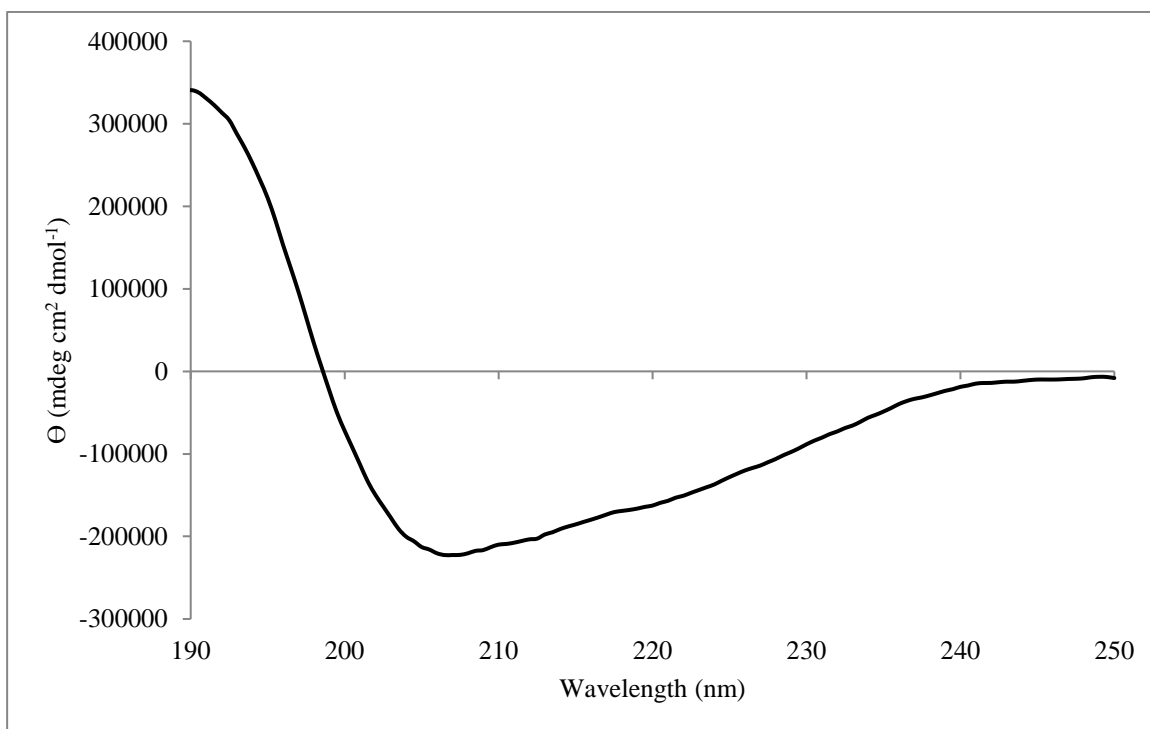


(A)

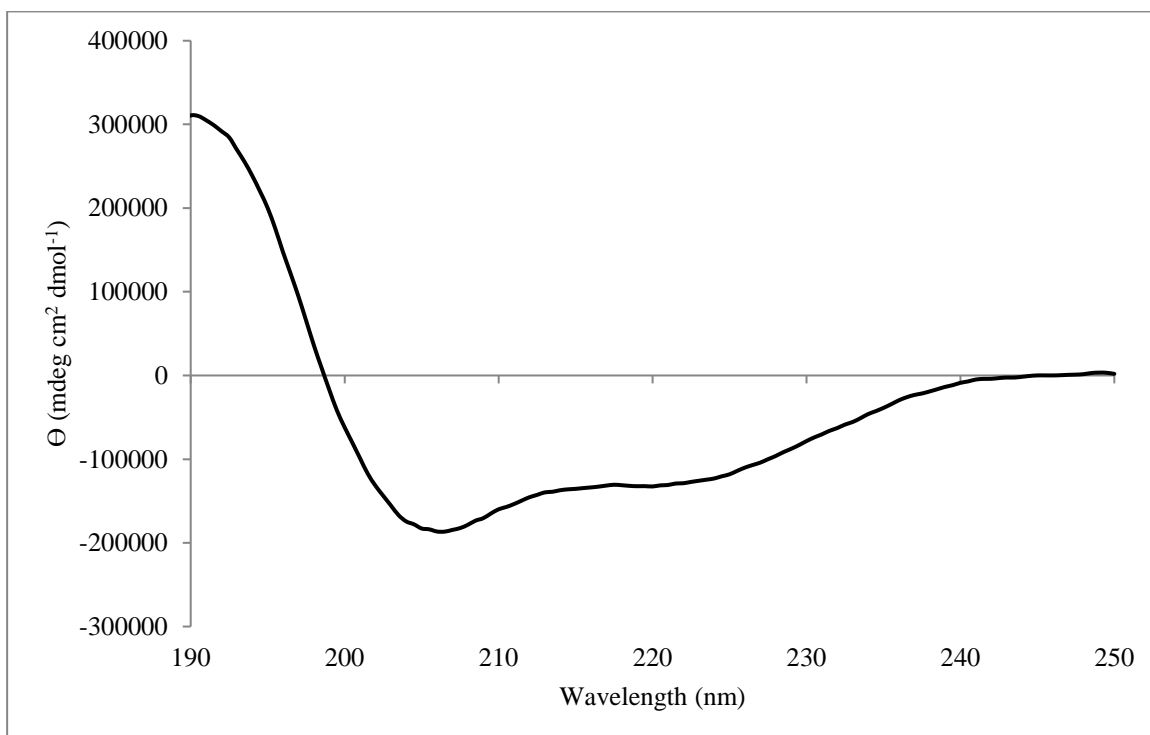


(B)

**Figure S1.** MALDI-ToF mass spectra of G17 (A) and G19 (B), the samples were prepared using a matrix of  $\alpha$ -cyano-4-hydroxycinnamic acid (CHCA), the peptide was deposited on the target by the double layer method, that is, a saturated matrix base, followed by the sample and finally a second matrix layer



(A)



(B)

**Figure S2.** Circular dichroism spectra of G17 (A) and G19 (B) under simulated membrane conditions in 30% (v/v) trifluoroethyl alcohol (TFE) solution.