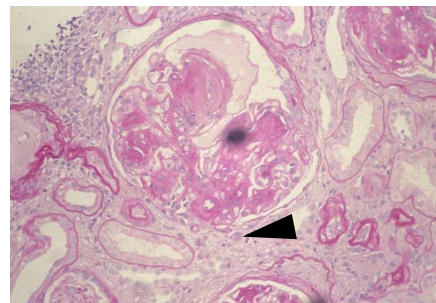
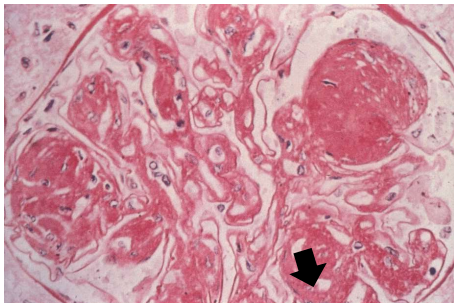
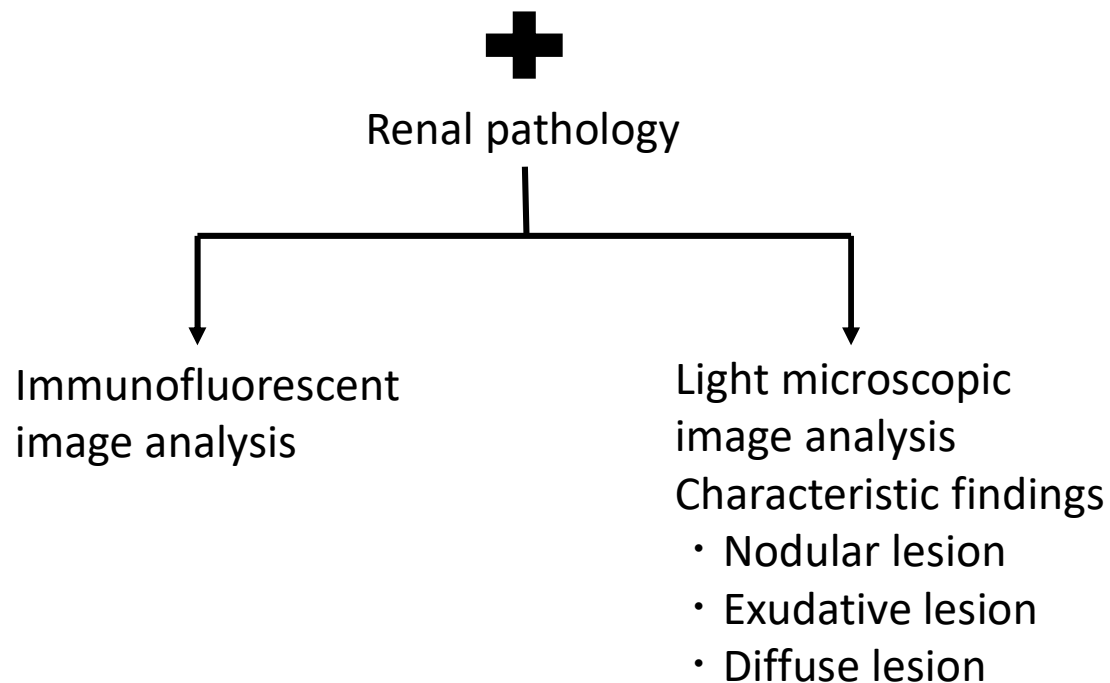


Diagnosis of DN

- long term diabetes mellites (more than 5 years)
- Presence of complications, such as DM retinopathy or DM neuropathy
- Presence of persistent proteinuria, such as microalbuminuria. In addition, other glomerular diseases are excluded
- No noticeable hematuria
- Initially increased glomerular filtration rate and / or kidney enlargement

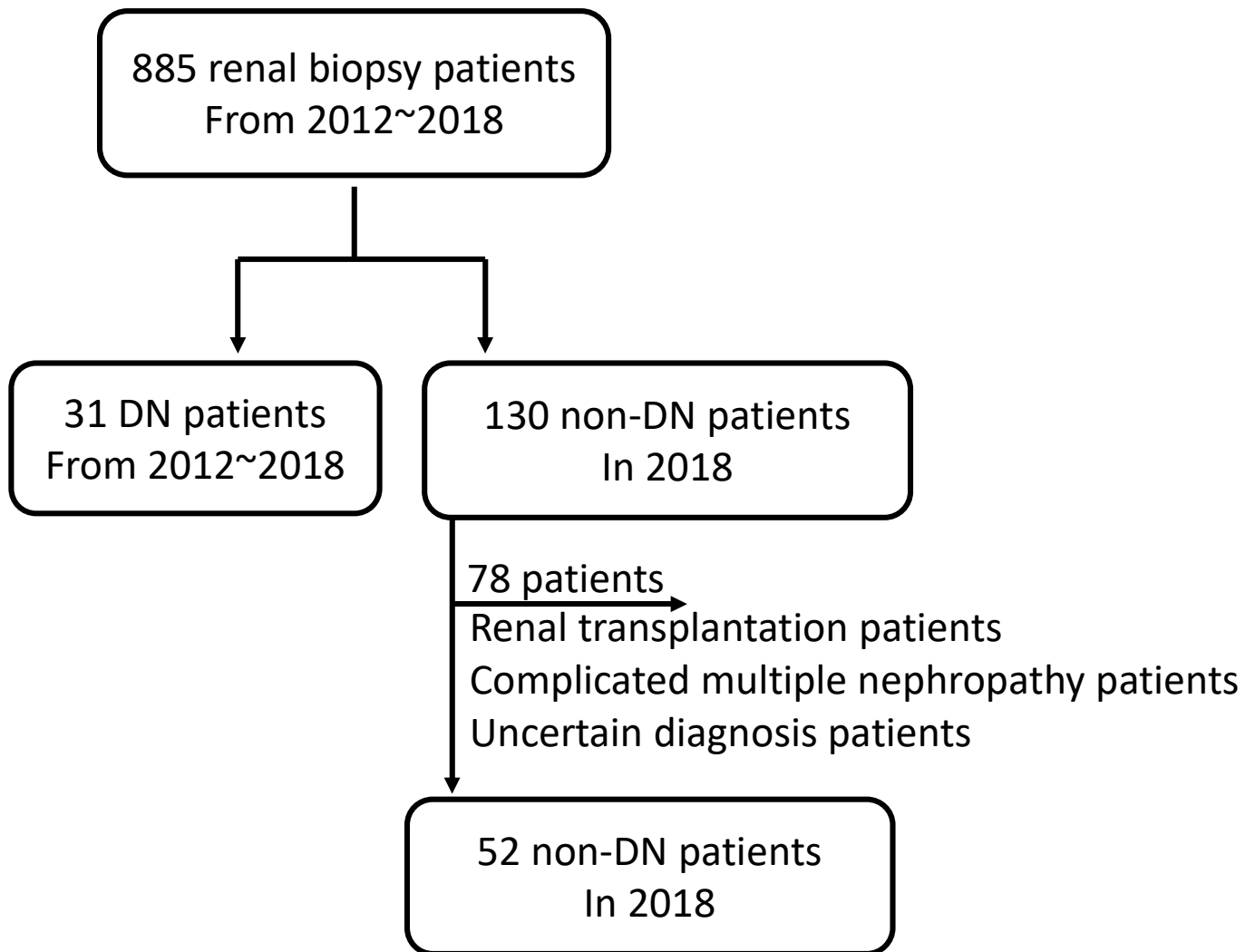


Arrow: Nodular lesion, **Arrow head:** Exudative lesion

Supplemental Fig.S1

The diagnosis method for diabetes mellites nephropathy (DN)

Supplemental Fig.S2



supplementary Fig. S2

Enrolment

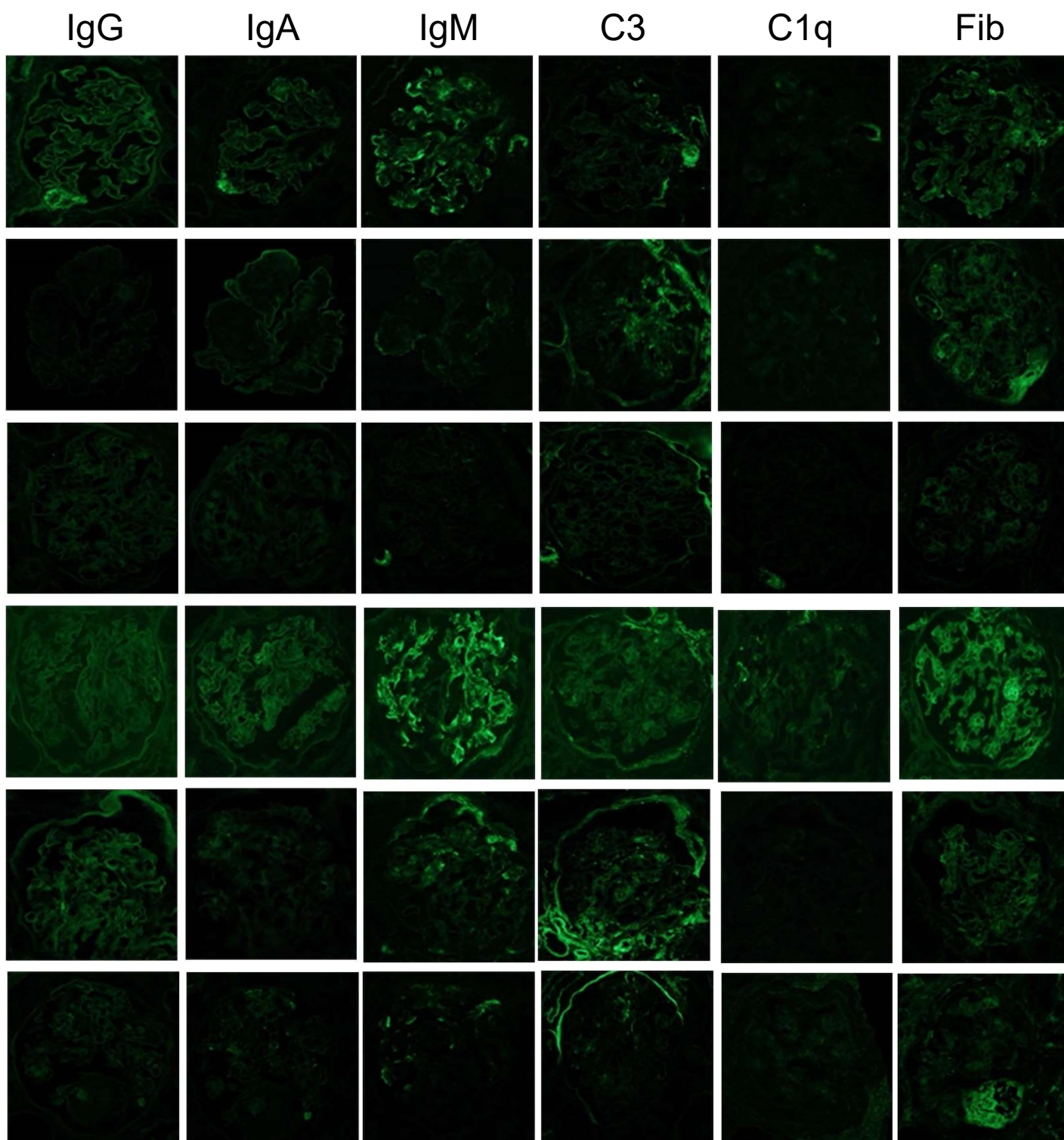
All patients underwent renal biopsy in Okayama University Hospital.

Supplemental Table.ST1

Diagnosis	Patients number
IgA nephropathy	17
Membranous nephropathy	9
ANCA related nephropathy	5
Membranous proliferative glomerular nephropathy	4
Minor change nephrotic syndrome	3
Tubulointerstitial nephropathy	3
Thin basement membrane disease	2
Immunotactoid disease	1
Focal segmental glomerular sclerosis	1
Acute tubular necrosis	1
Glomerular sclerosis	1
C3 nephropathy	1
Amyloid disease	1
Obesity related nephropathy	1
Total	52

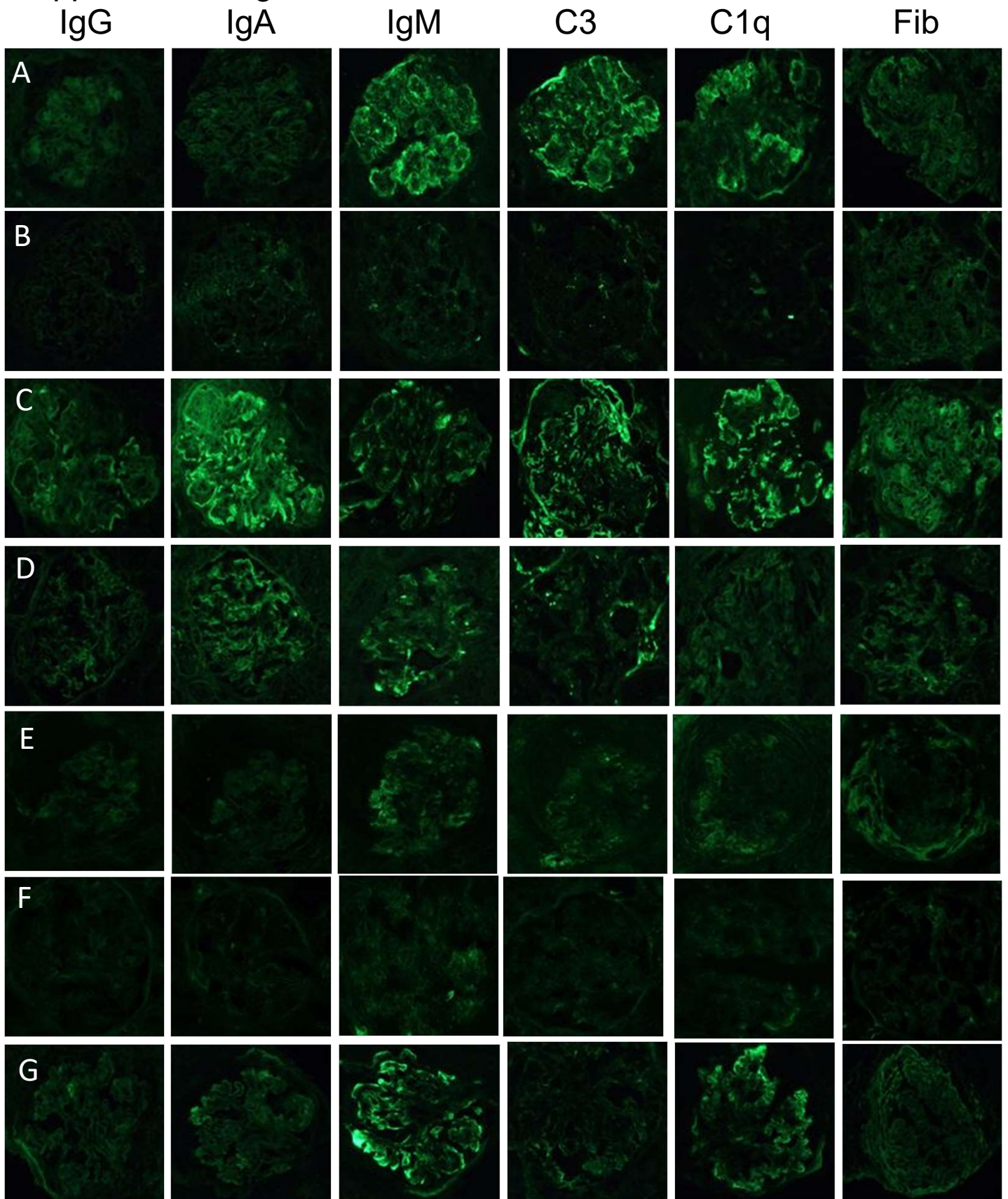
**supplementary Table. ST1
compared other nephropathy and patient number**

Supplemental Fig. S3a



supplementary Figure. S3a
Test data set for DN

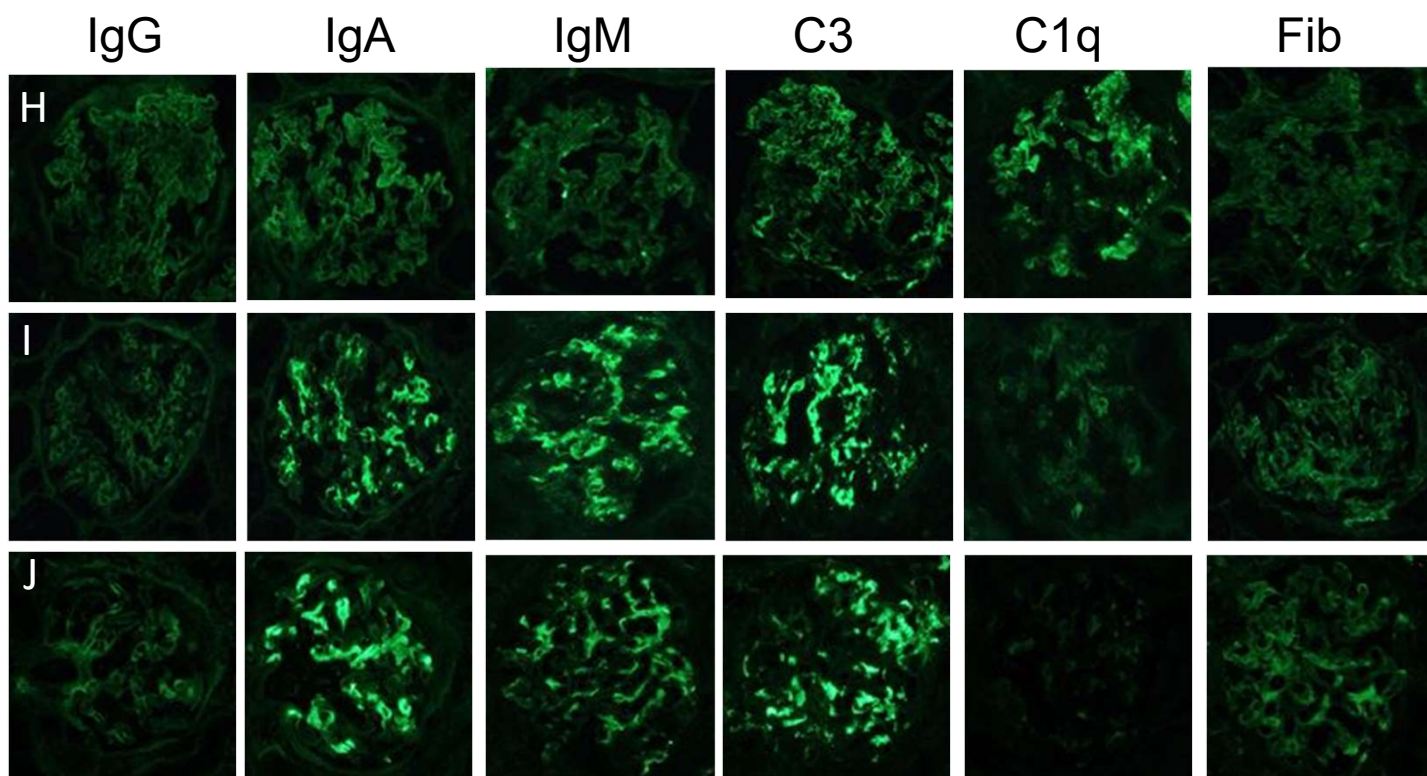
Supplemental Fig.S3b



supplementary Figure. S3b

Test data set for non DN: A: C3 nephropathy, B: FGS (focal segmental glomerular sclerosis), C: MPGN (membranoproliferative glomerulonephritis), D: TBM (thin basement membrane disease) E: MCNS (micro change nephrotic syndrome), F: interstitial nephritis, G: ANCA (antineutrophil cytoplasmic antibody) related disease

Supplemental Fig.S3c



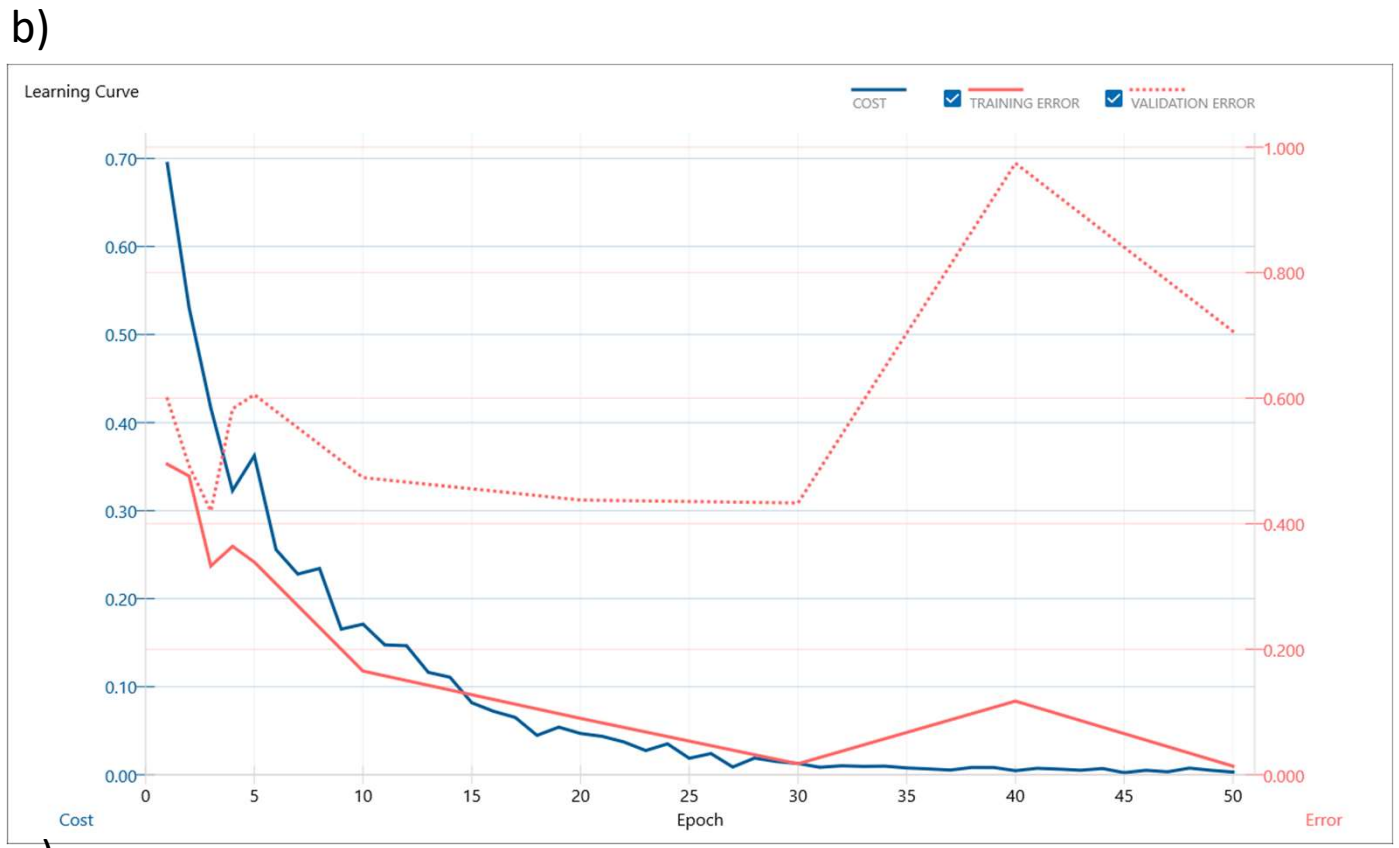
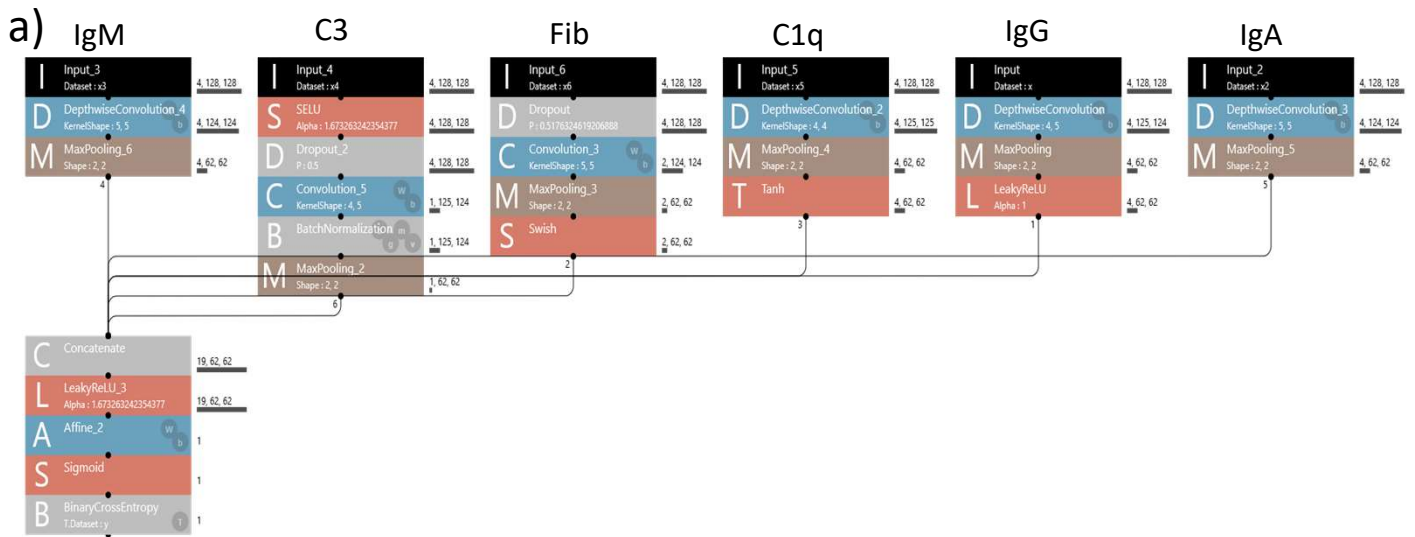
H: MN, I: IgA-N, J: IgA-N

supplementary Figure. S3c

Test data set for non DN

H: MN (Membranous nephropathy), I: IgA-N (IgA nephritis), J: IgA-N

Supplemental Fig.S4



c)

	$y'=0$	$y'=1$	Recall
$y=0$	4	2	0.6666
$y=1$	2	8	0.8
Precision	0.6666	0.8	
F-Measures	0.6666	0.8	

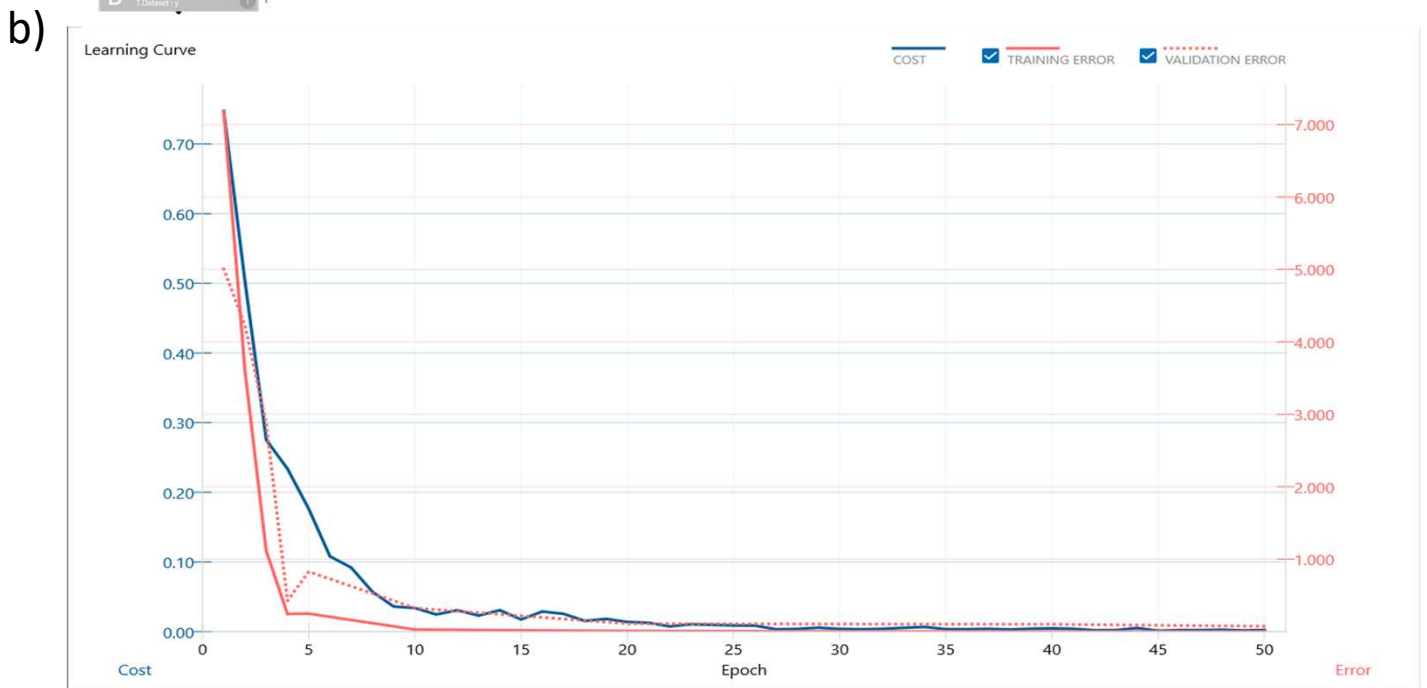
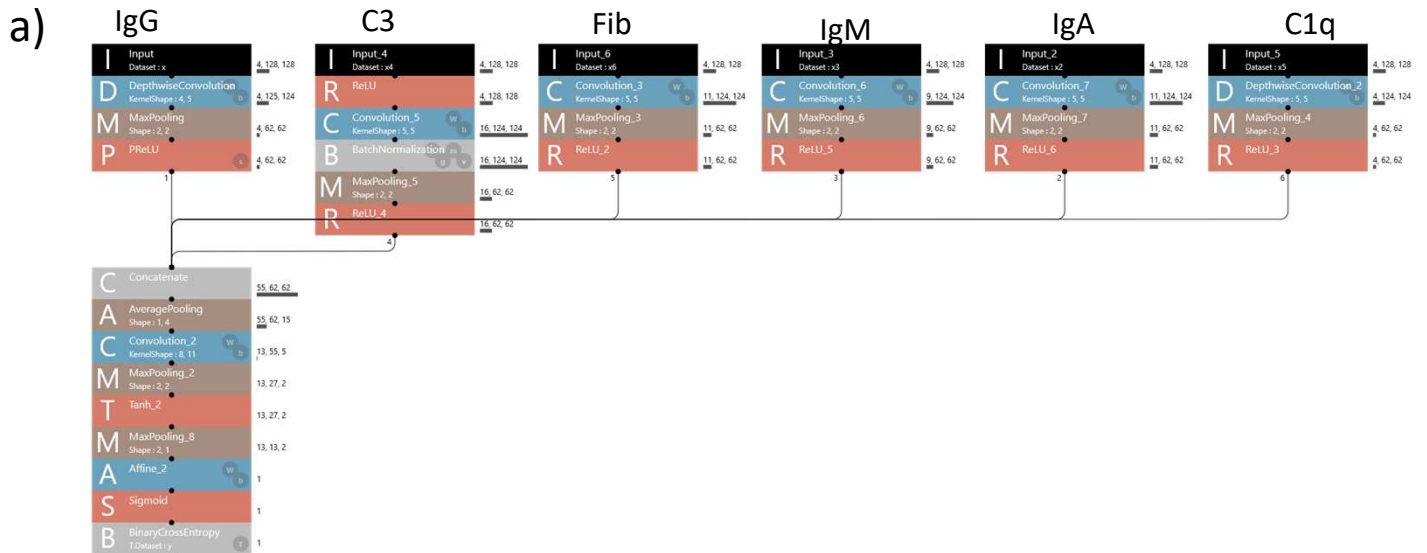
Accuracy	0.75
Avg.Precision	0.7333
Avg.Recall	0.7333
Avg.F-Measures	0.7333

supplementary Figure. S4 representative CNN data

- a) schema of CNN, b) learning curve, c) evaluation data
 b) ($y=0$: DN, $y=1$: non DN, $y'=0$: estimated DN, $y'=1$: estimated non DN)

Supplemental Fig.S5

CP



c)

	$y'=0$	$y'=1$	Recall
$y:\text{label}=0$	6	0	1
$y:\text{label}=1$	0	10	1
Precision	1	1	
F-Measures	1	1	

Accuracy	1
Avg.Precision	1
Avg.Recall	1
Avg.F-Measures	1

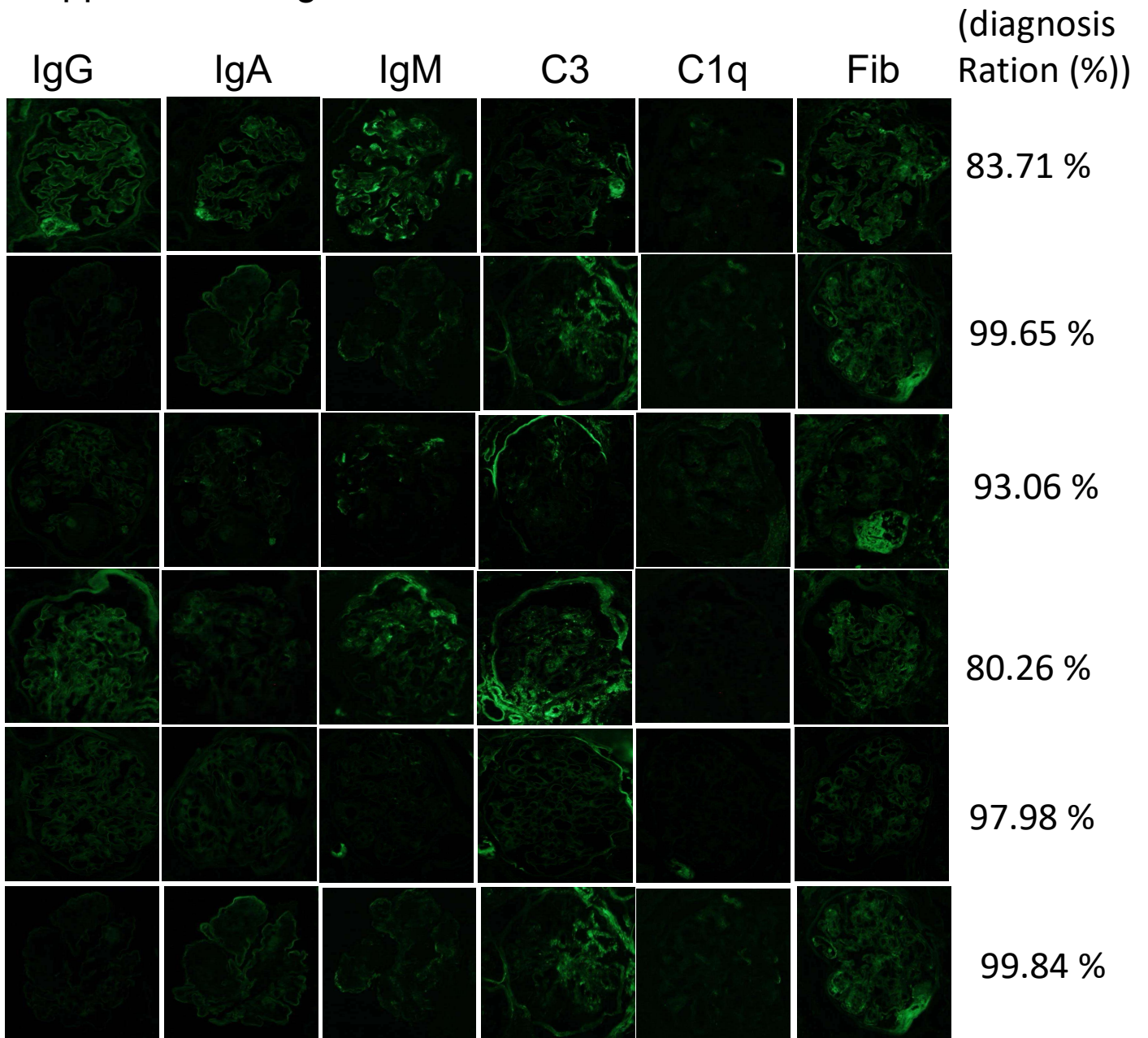
supplementary Figure. S5

representative completely diagnosis (CP) CNN data

a) schema of CNN, b) learning curve, c) evaluation data

($y=0$: DN, $y=1$: non DN, $y'=0$: estimated DN, $y'=1$: estimated non DN)

Supplemental Fig.S6a



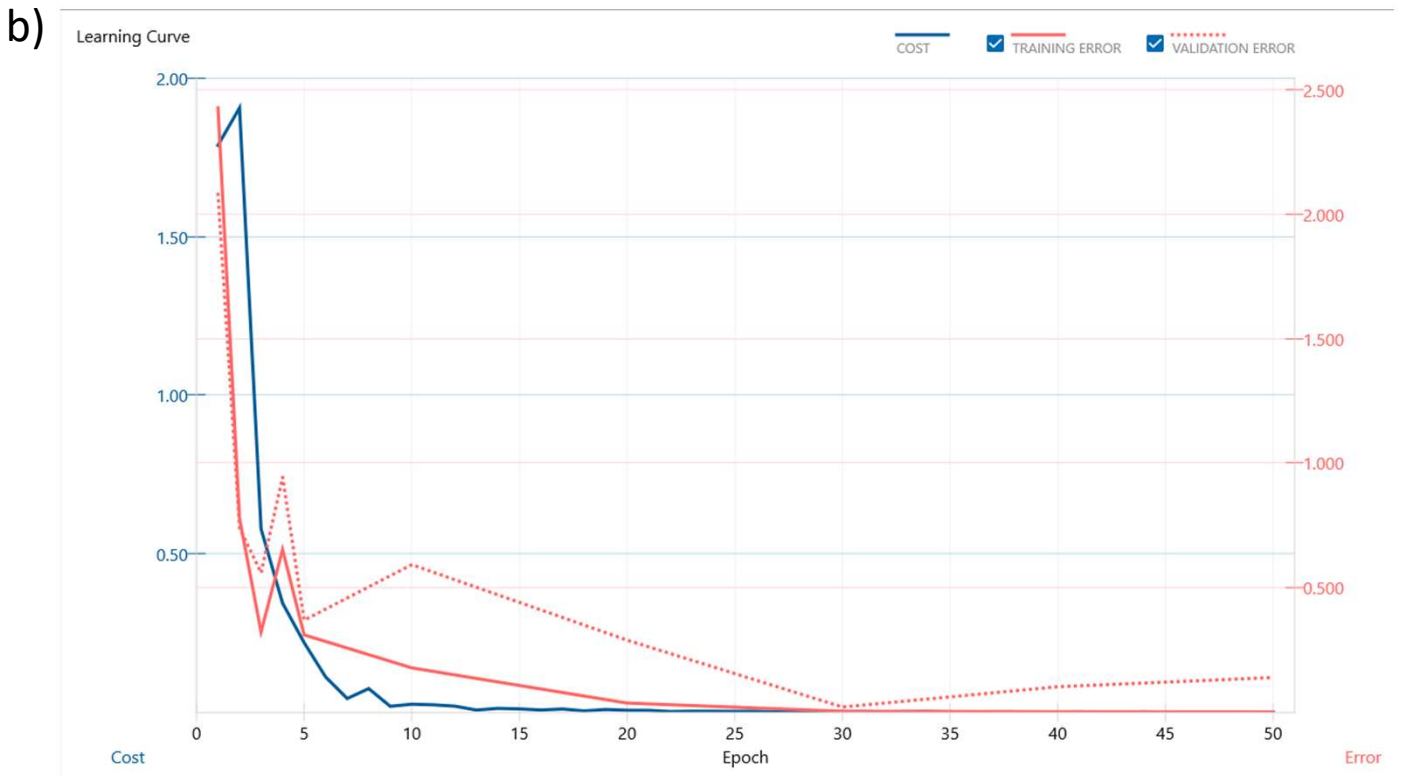
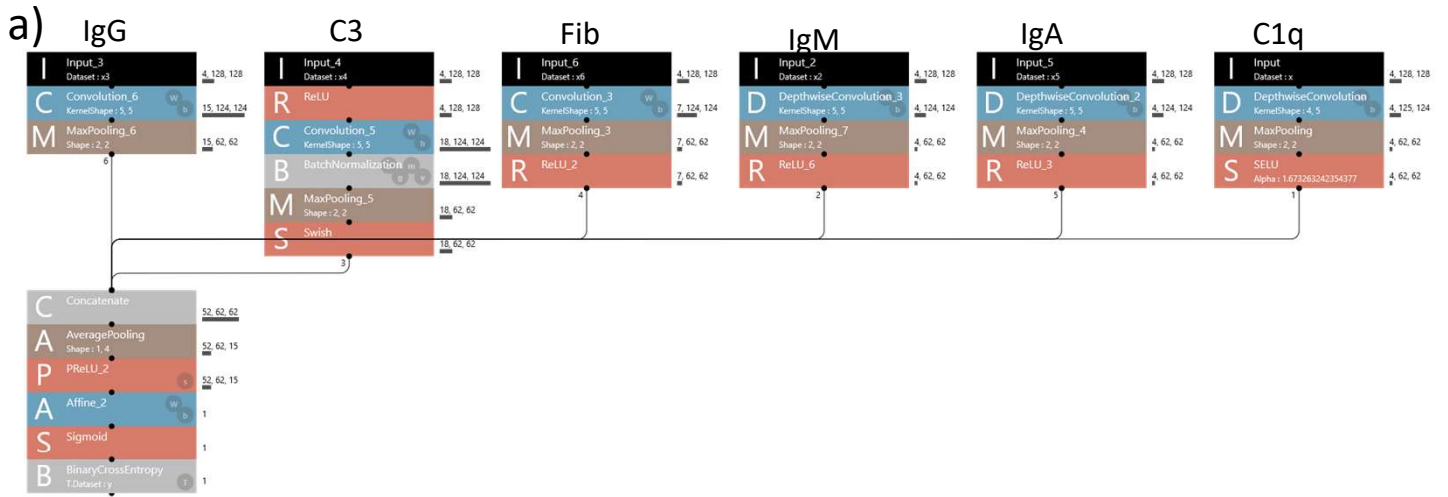
supplementary Figure. S6a
representative completely (CP) DN diagnosis ration for DN
patients' images

Supplemental Fig.S6b

IgG	IgA	IgM	C3	C1q	Fib	(diagnosis Ration (%))
						IgA-N 0.26 %
						Interstitial Nephritis 20.42 %
						MCNS 16.08 %
						MPGN 0.271 %
						FGS 16.61 %
						C3 nephropathy 0.47 %
						IgA-N 0.11 %
						ANCA 7.51 %
						TBM 0.33 %
						MN 0.22 %

supplementary Figure. S6b
representative completely (CP) DN diagnosis ration for non DN
patients' images

Supplemental Fig.S7 FN



c)

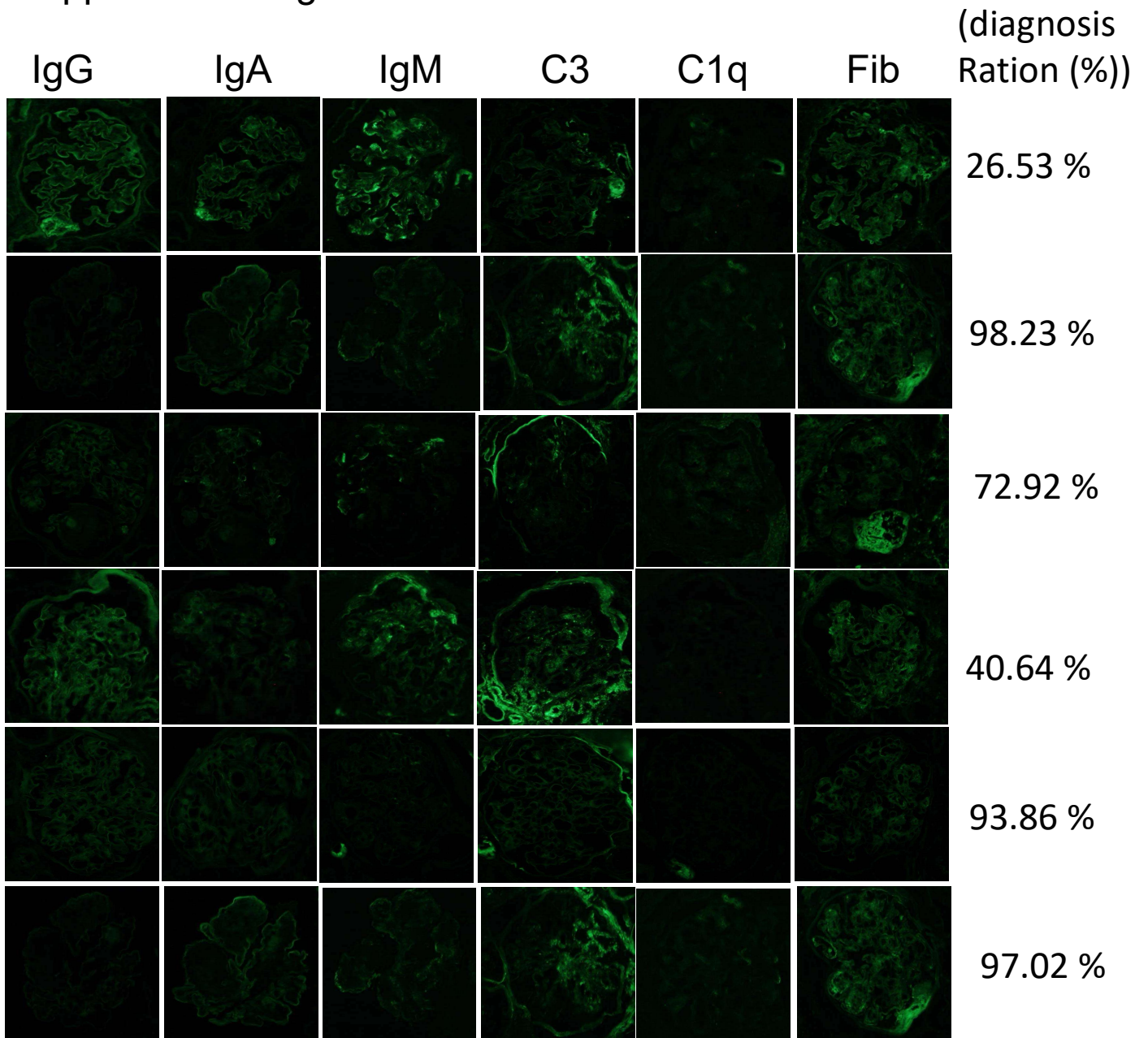
	$y'=0$	$y'=1$	Recall
$y=0$	4	2	0.6666
$y=1$	0	10	1
Precision	1	0.8333	
F-Measures	0.7999	0.909	

Accuracy	0.875
Avg.Preci sion	0.9166
Avg.Recall	0.8333
Avg.F- Measures	0.8545

supplementary Figure. S7 representative false negative diagnosis (FN) CNN data

a) schema of CNN, b) learning curve, c) evaluation data
($y=0$: DN, $y=1$: non DN, $y'=0$: estimated DN, $y'=1$: estimated non DN)

Supplemental Fig.S8a



supplementary Figure. S8a
representative false negative (FN) DN diagnosis ration for DN
patients' images

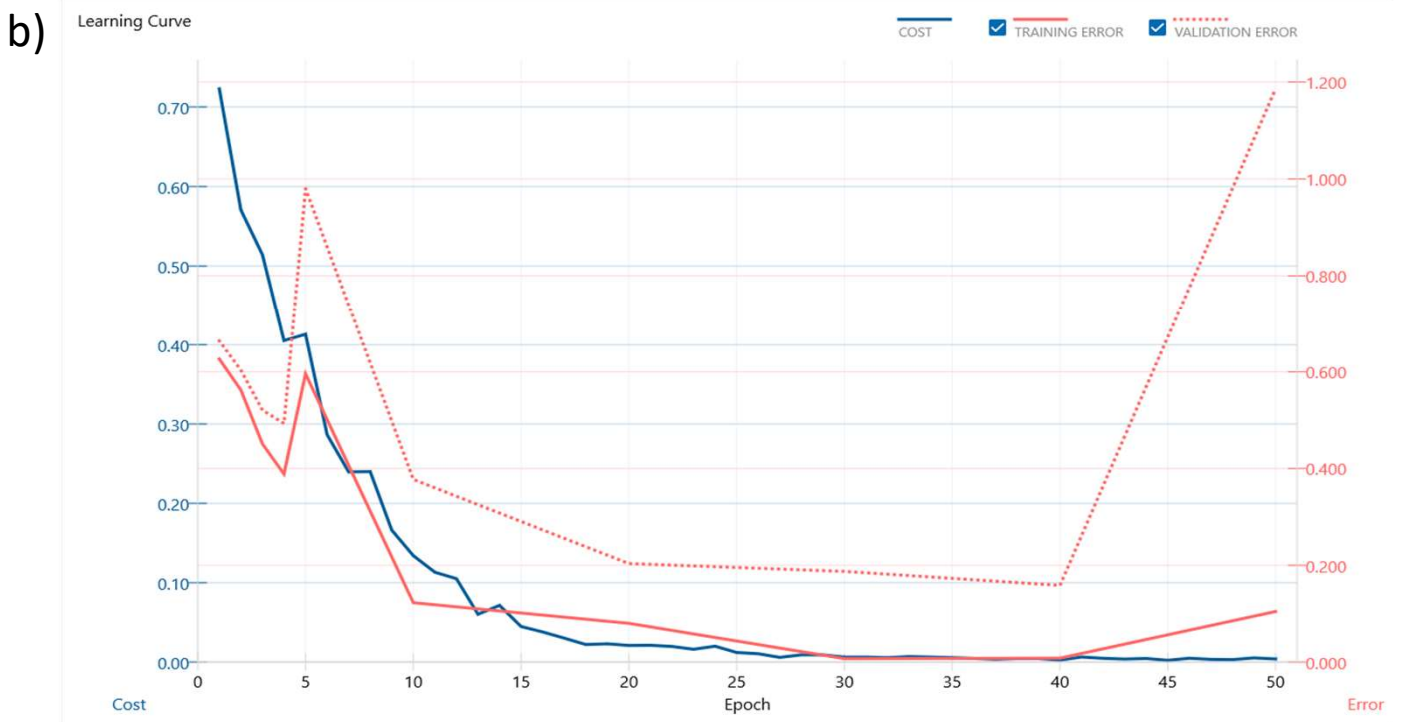
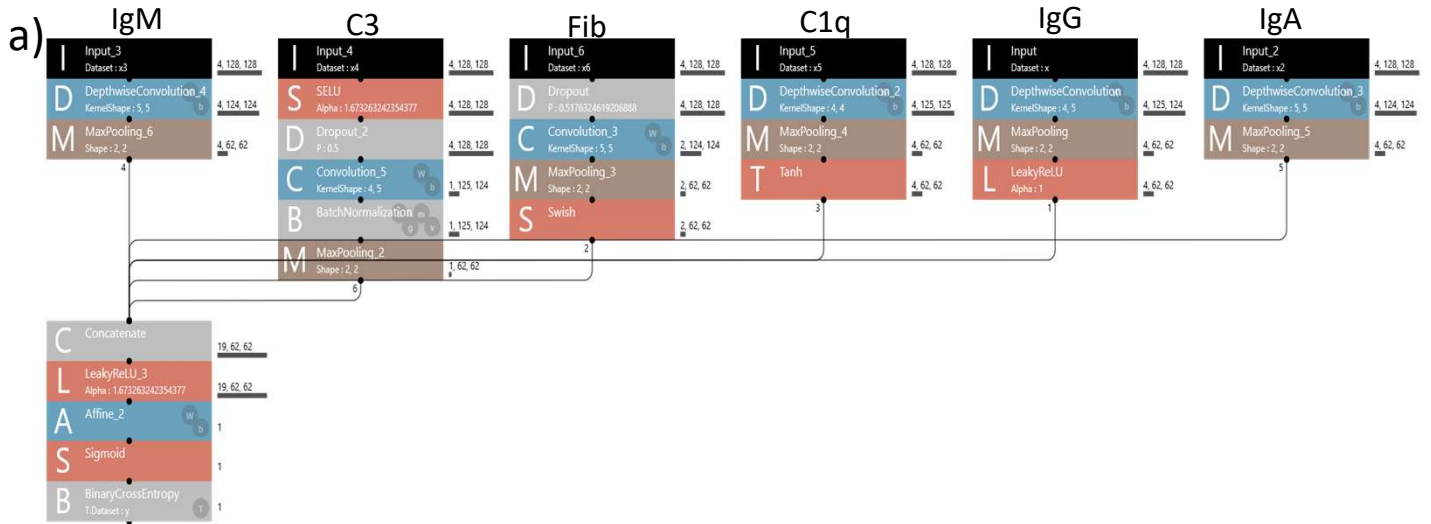
Supplemental Fig.S8b

IgG	IgA	IgM	C3	C1q	Fib	(diagnosis Ration (%))
						IgA-N 0.05 %
						Interstitial Nephritis 48.83 %
						MCNS 21.53 %
						MPGN 0.03 %
						FGS 17.14 %
						C3 nephropathy 0.23 %
						IgA-N 0.04 %
						ANCA 20.15 %
						TBM 0.62 %
						MN 1.44 %

supplementary Figure. S8b
representative false negative (FN) DN diagnosis ration for non
DN patients' images

Supplemental Fig.S9

FP



c)

	y'=0	y'=1	Recall
y=0	6	0	1
y=1	3	7	0.7
Precision	0.6666	1	
F-Measures	0.7999	0.8235	

Accuracy	0.8125
Avg.Precision	0.8333
Avg.Recall	0.85
Avg.F-Measures	0.8117

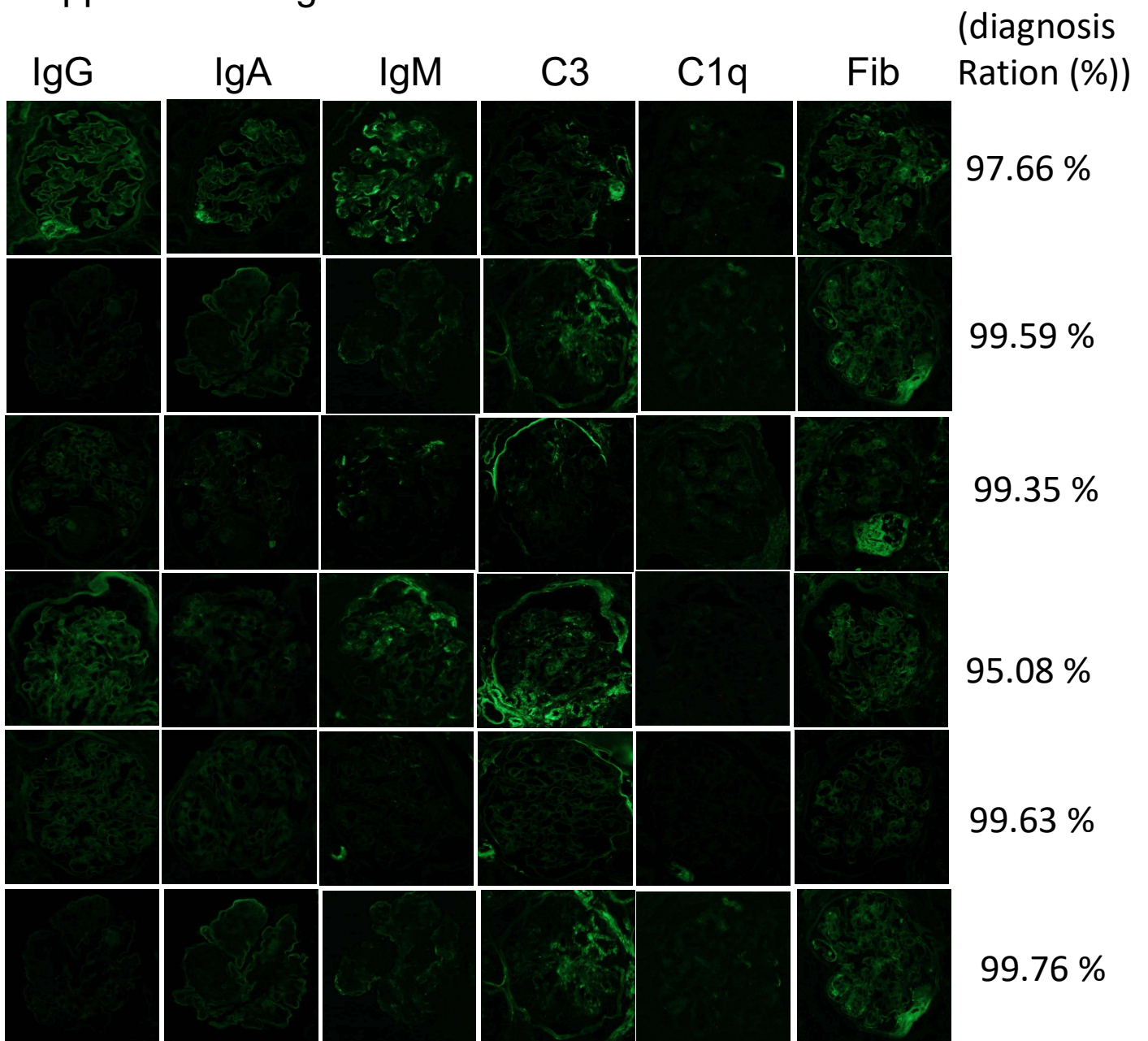
supplementary Figure. S9

representative false positive diagnosis (FP) CNN data

a) schema of CNN, b) learning curve, c) evaluation data

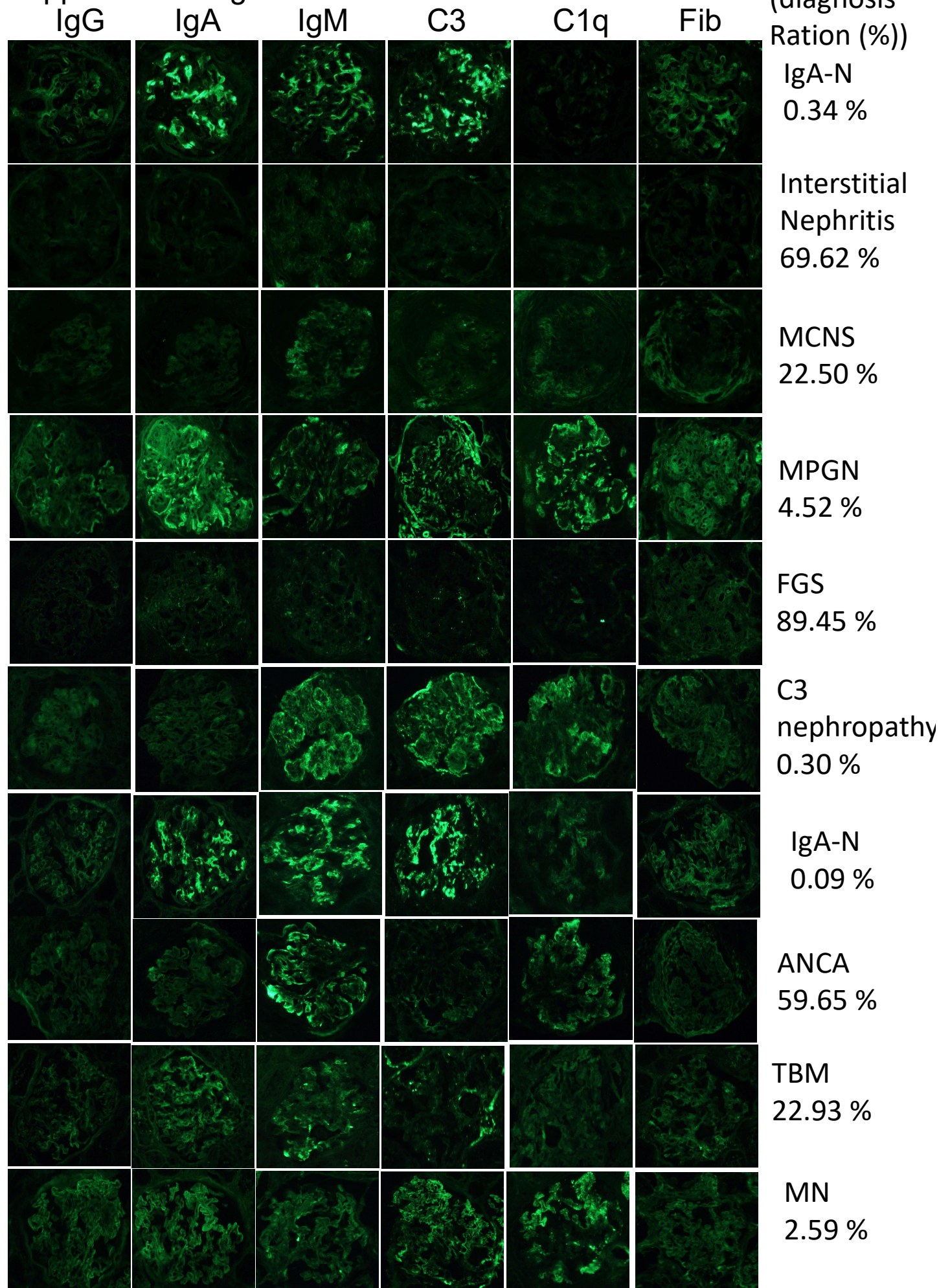
(y=0: DN, y=1: non DN, y`=0: estimated DN, y`=1: estimated non DN)

Supplemental Fig.S10a



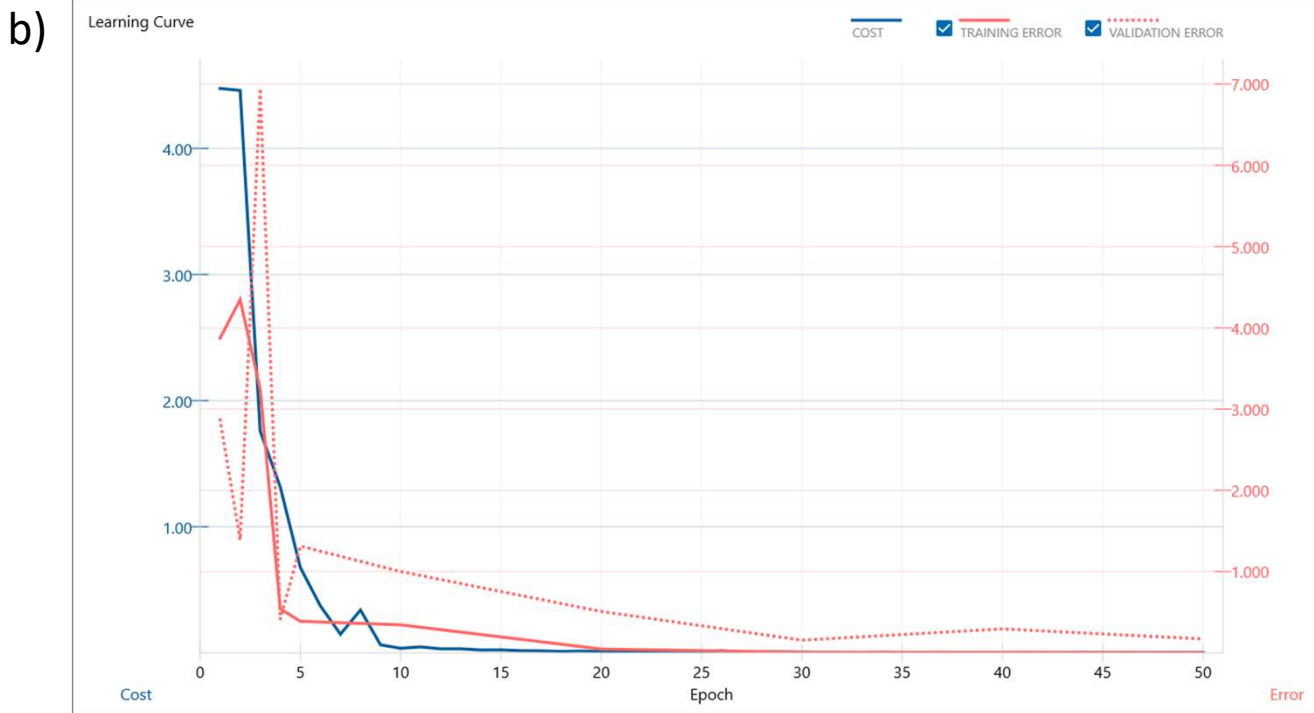
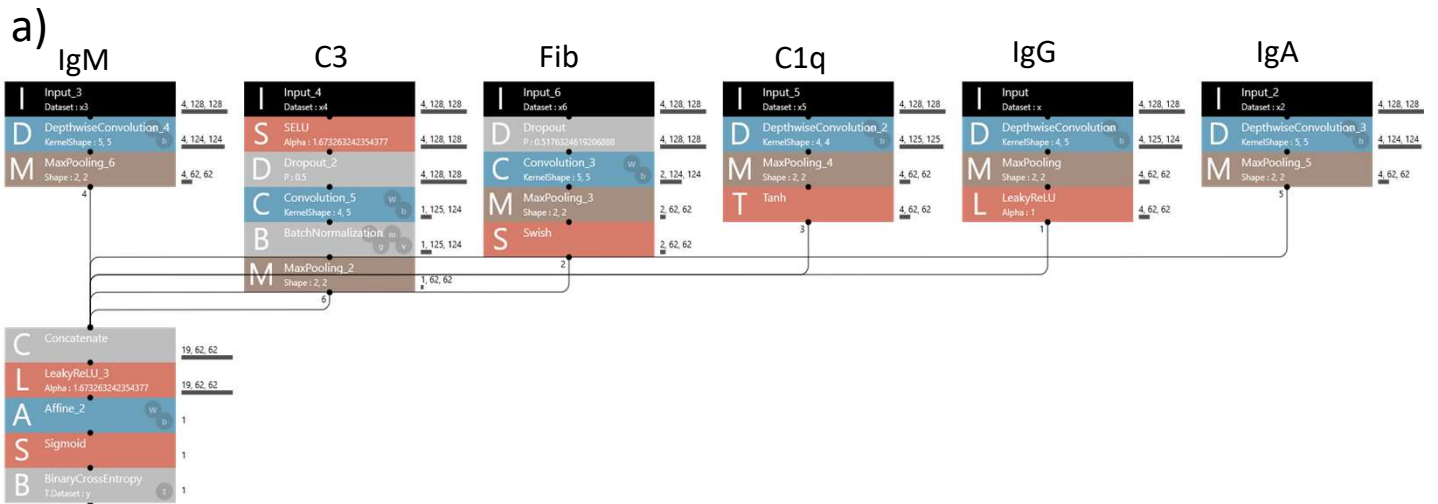
supplementary Figure. S10a
representative false positive (FP) DN diagnosis ration for DN
patients' images

Supplemental Fig.S10b



supplementary Figure. S10b
representative false positive (FP) DN diagnosis ration for non DN
patients' images

Supplemental Fig.S11 AV



c)

	y'=0	y'=1	Recall
y=0	4	2	0.6666
y=1	1	9	0.9
Precision	0.8	0.8181	
F-Measures	0.7272	0.857	

Accuracy	0.8125
Avg.Precision	0.809
Avg.Recall	0.7833
Avg.F-Measures	0.7921

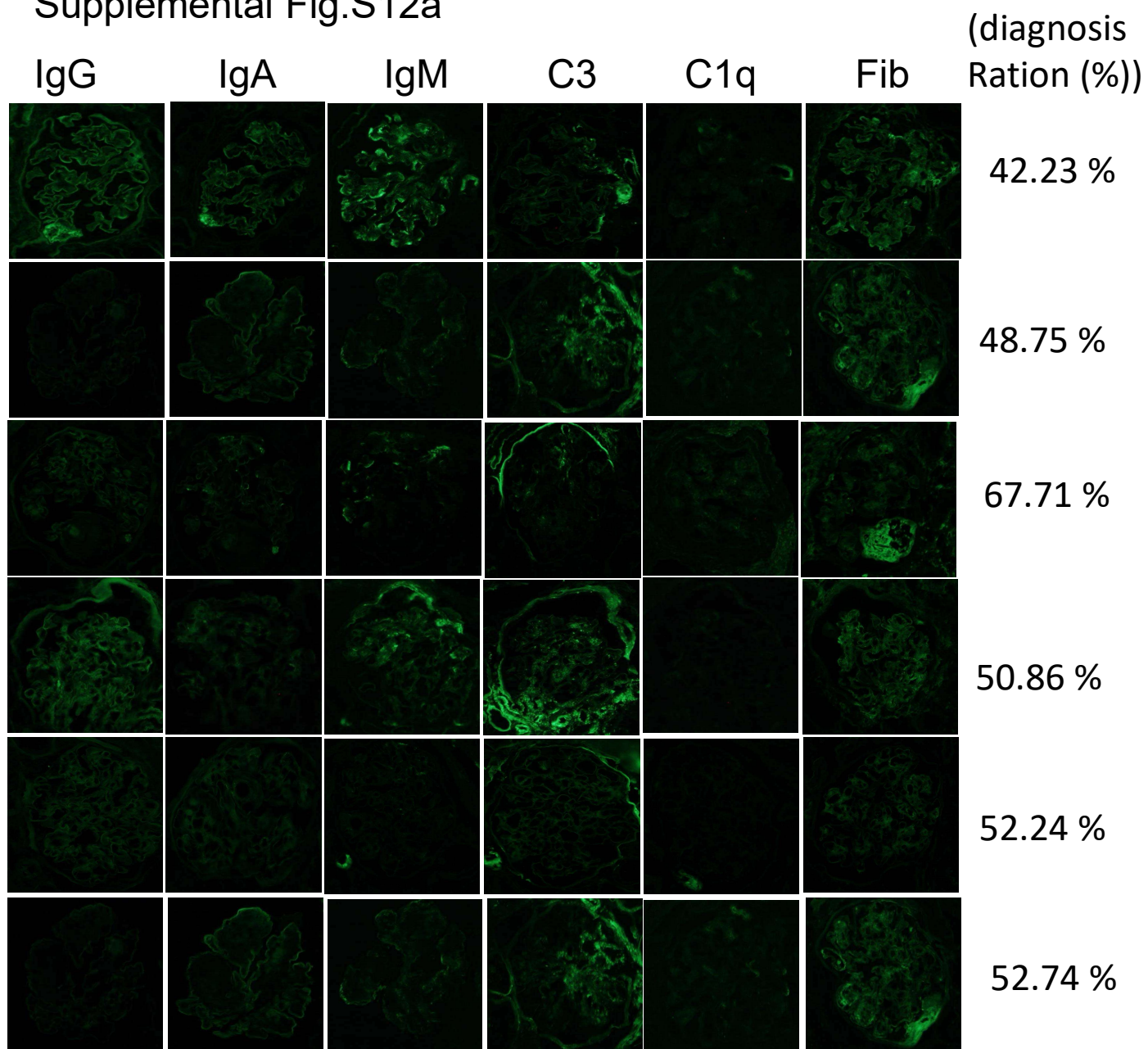
supplementary Figure. S11

representative average diagnosis (AV) CNN data

a) schema of CNN, b) learning curve, c) evaluation data

(y=0: DN, y=1: non DN, y`=0: estimated DN, y`=1: estimated non DN)

Supplemental Fig.S12a



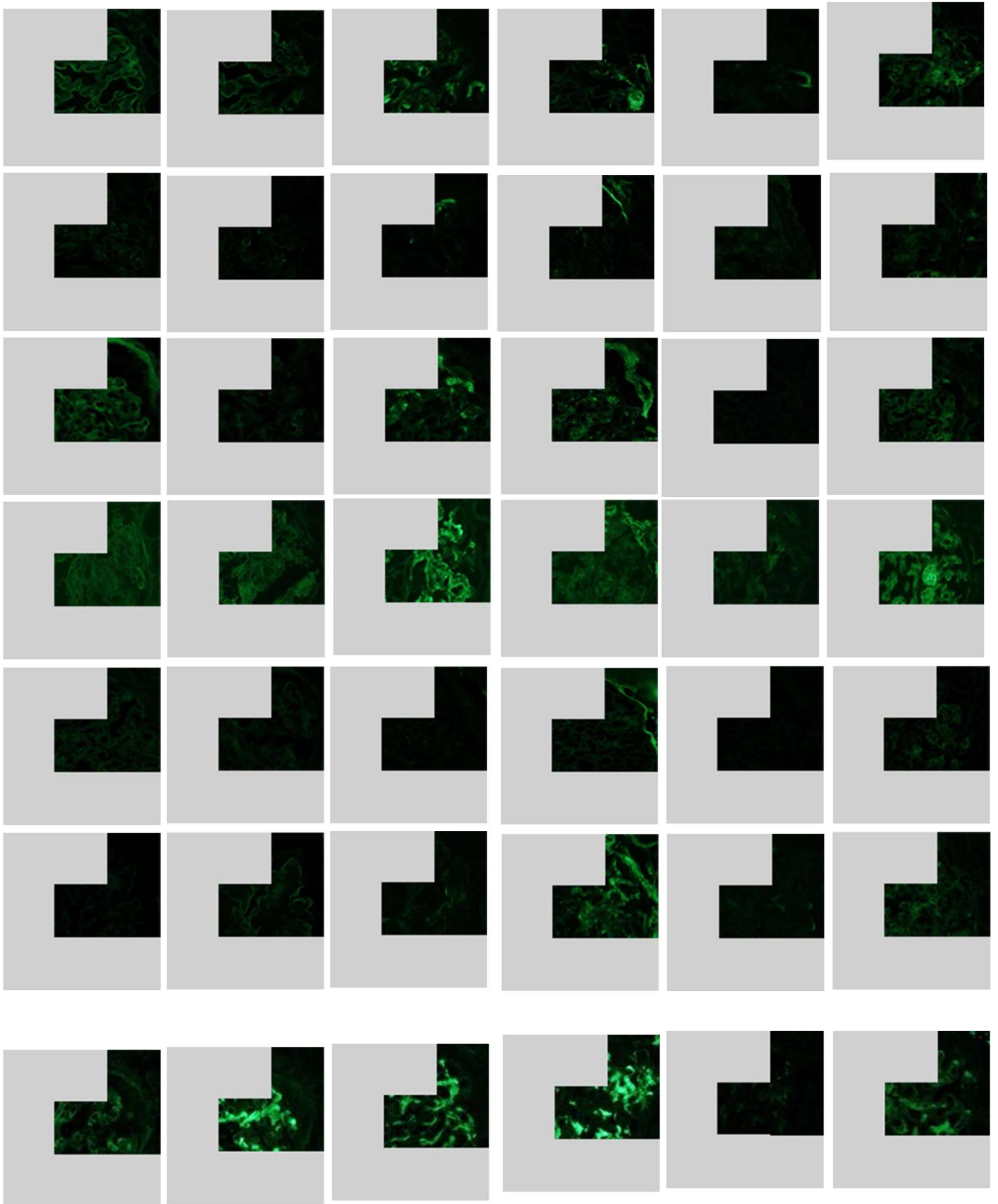
supplementary Figure. S12a

representative average (AV) DN diagnosis ration for DN patients' images

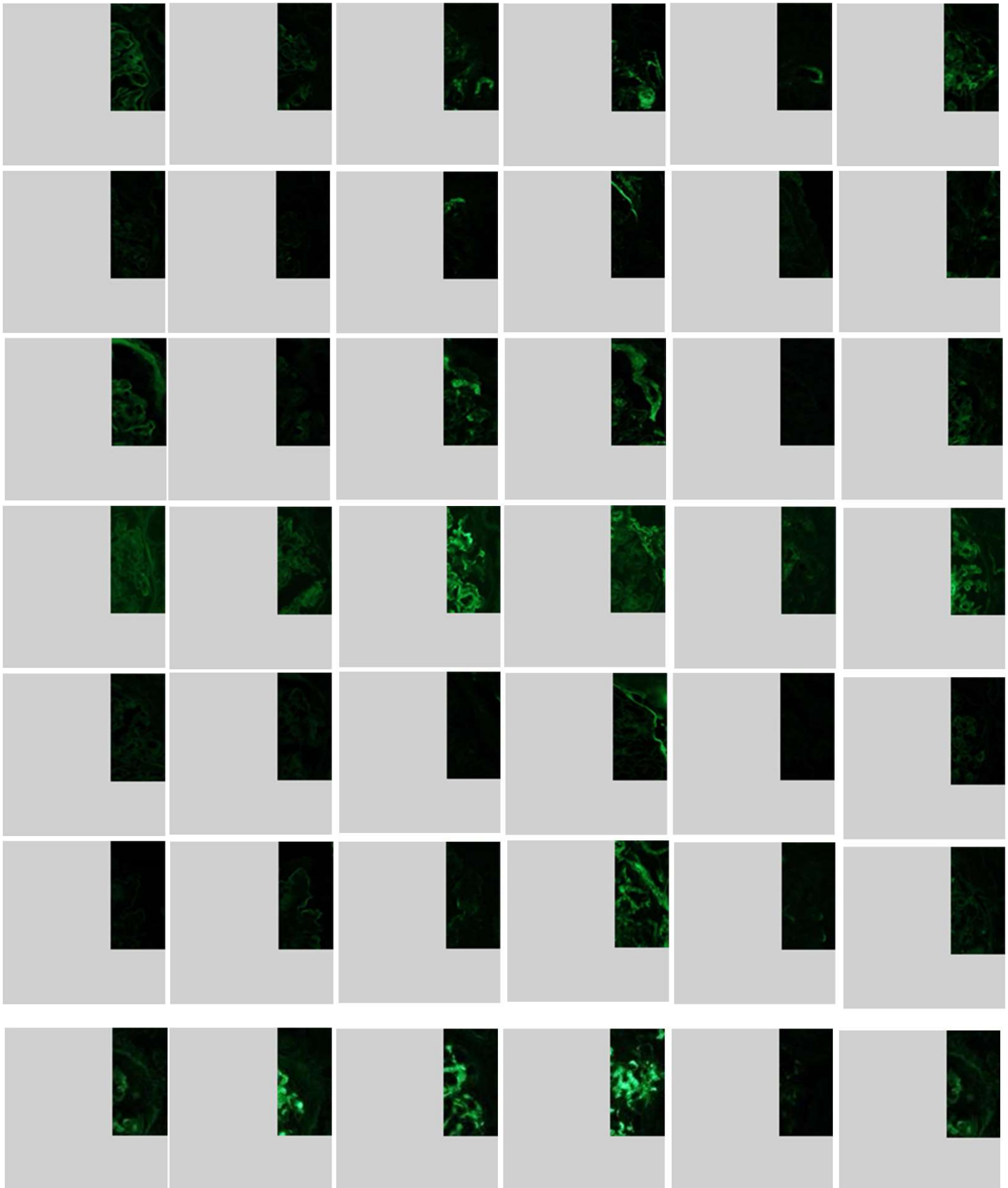
Supplemental Fig.S12b

IgG	IgA	IgM	C3	C1q	Fib	(diagnosis Ration (%))
						IgA-N 2.15 %
						Interstitial Nephritis 52.46 %
						MCNS 37.80 %
						MPGN 19.76 %
						FGS 53.53 %
						C3 nephropathy 7.06 %
						IgA-N 0.9 %
						ANCA 41.56 %
						TBM 48.62 %
						MN 38.26 %

supplementary Figure. S12b
representative average (AV) DN diagnosis ration for non DN
patients' images



supplementary Figure. S13
Lime analysis for patient #1 images with completely diagnosis
program #1



supplementary Figure. S14
Lime analysis for patient #1 images with another completely
diagnosis program #6