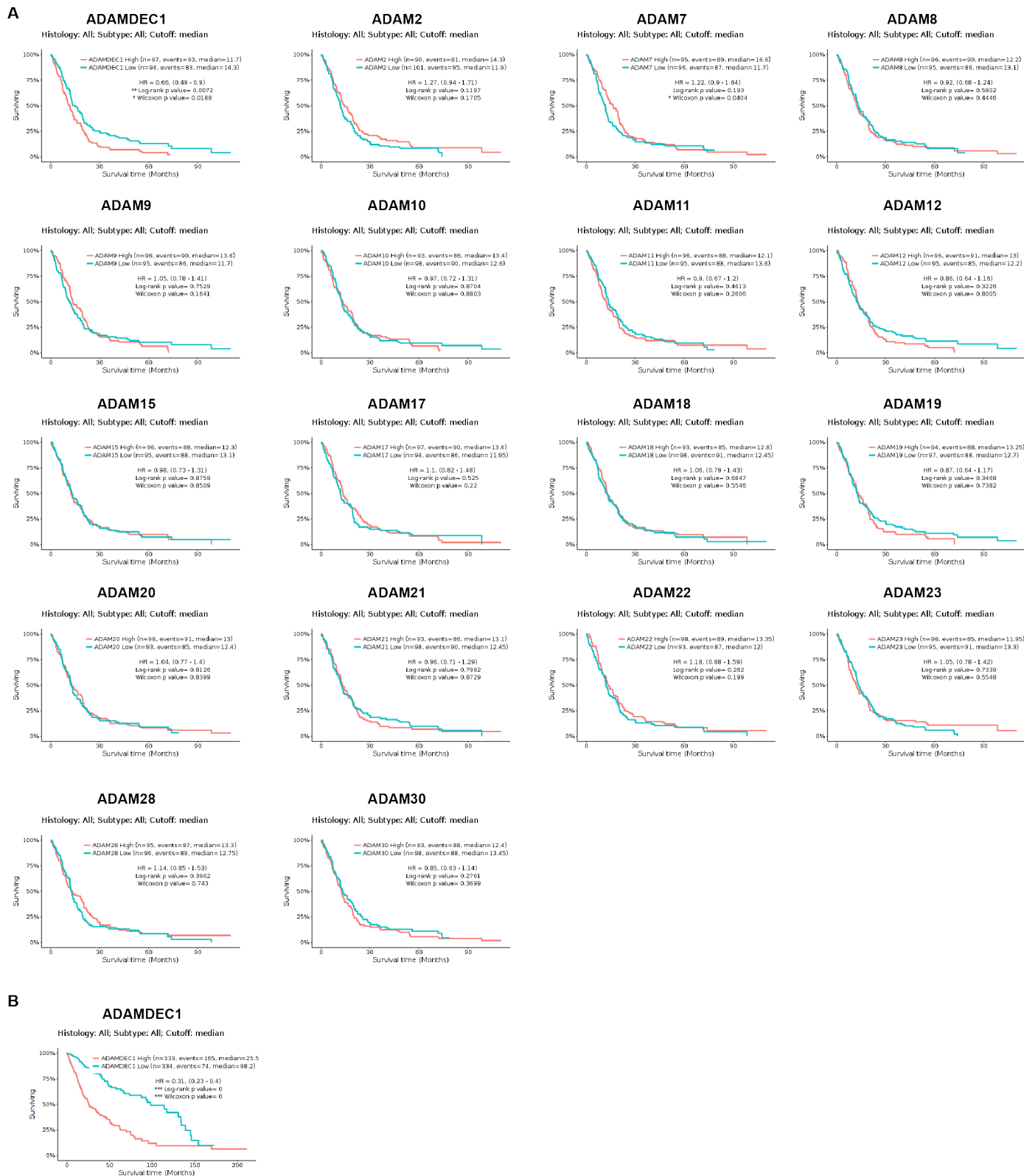


**Fig. S1**



**Fig. S1: (A)** Kaplan-Meier analysis of GBM patient survival after stratification for ADAM family members in the LeeY dataset. **(B)** Kaplan-Meier analysis of patient survival (combined high-grade and low-grade glioma) after stratification for ADAMDEC1 in the TCGA Glioma dataset.