

Supplementary section

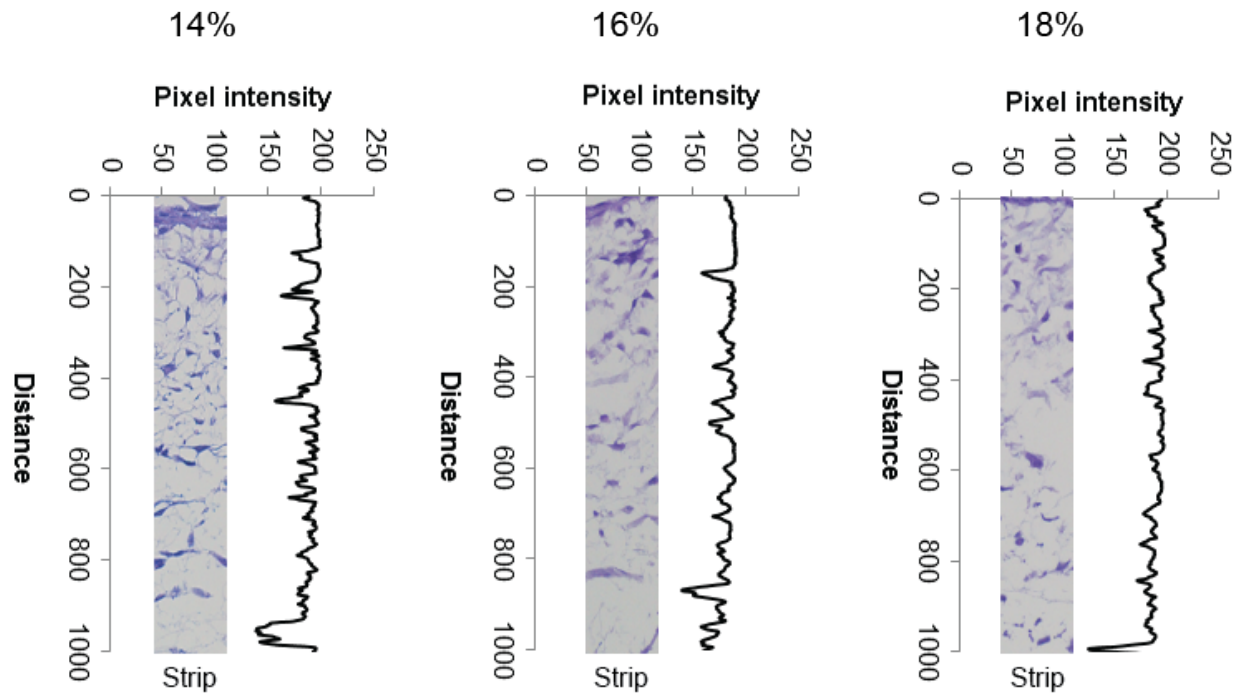


Figure S1: Intensity profile of the features across the H&E stained strip taken from the corresponding image in figure 5b obtained through ImageJ software. The intensity profiles of PVIC-cultured 14%, 16% and 18% scaffolds confirm the presence of PVICs throughout the scaffolds.

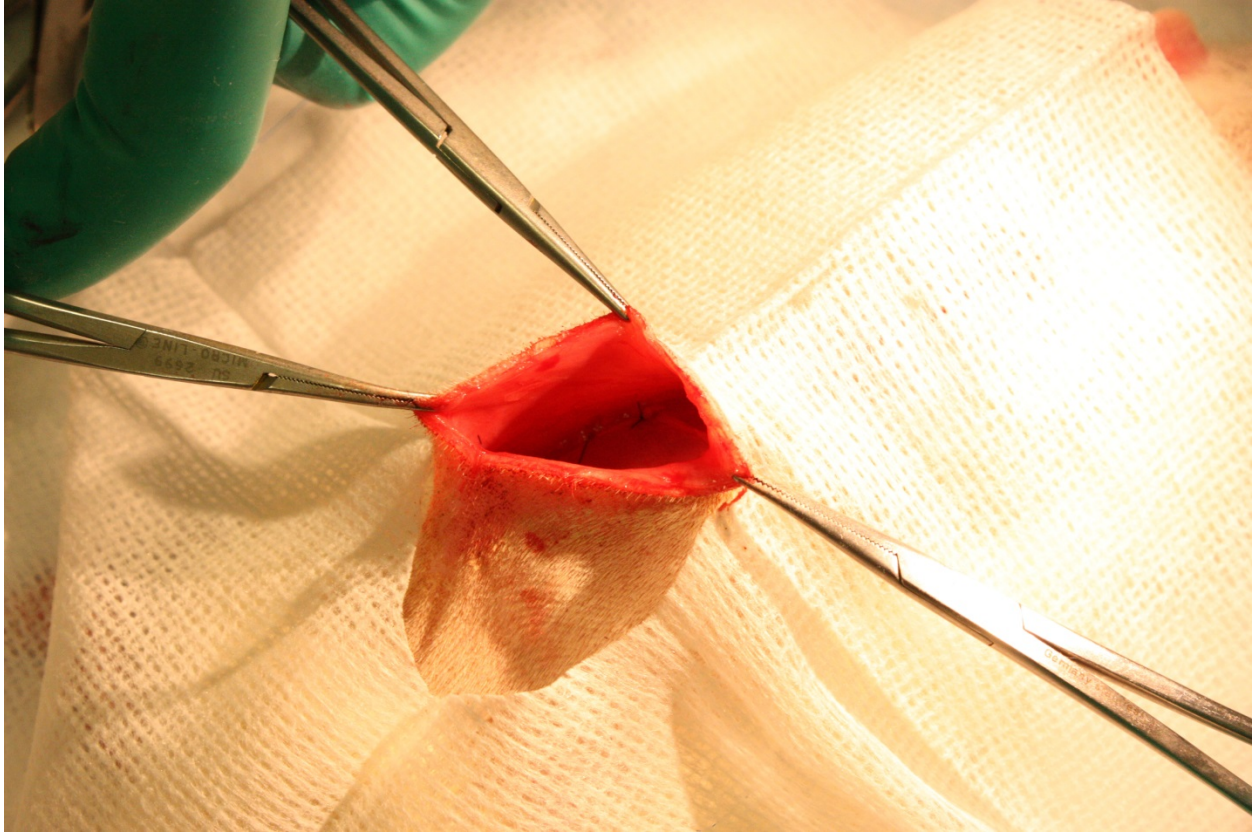


Figure S2: A total of three scaffolds - one scaffold of each type (14%, 16% and 18%), were implanted in a rat in its dorsal area. Photo was taken during implantation.

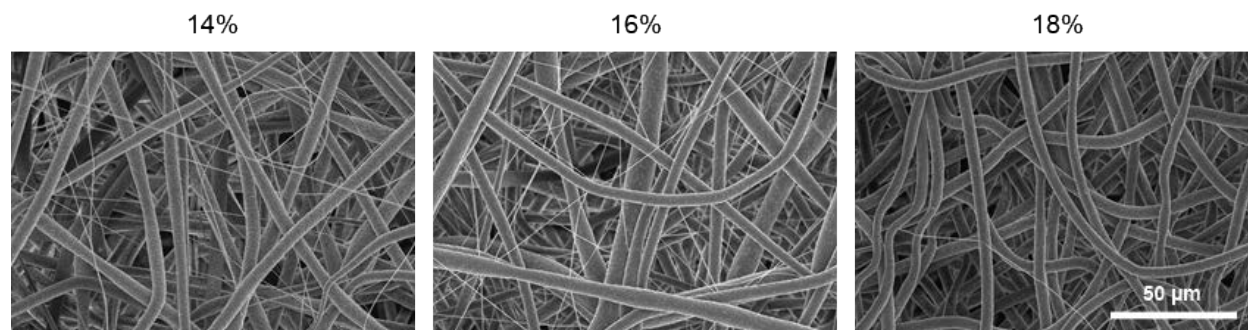


Figure S3: Scanning electron microscopy images of fibrous scaffolds produced by electrospinning 14, 16 and 18% PCL. The scaffolds contain both nanofibers and microfibrils. Among them, number of nanofibers was highest in 14% scaffold and lowest in 18% scaffold.