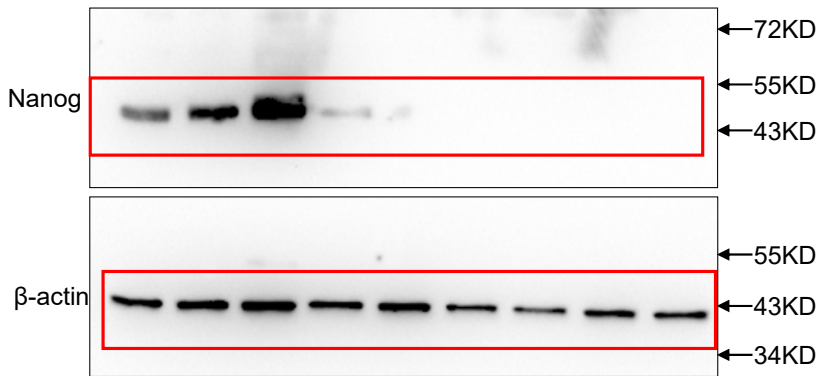
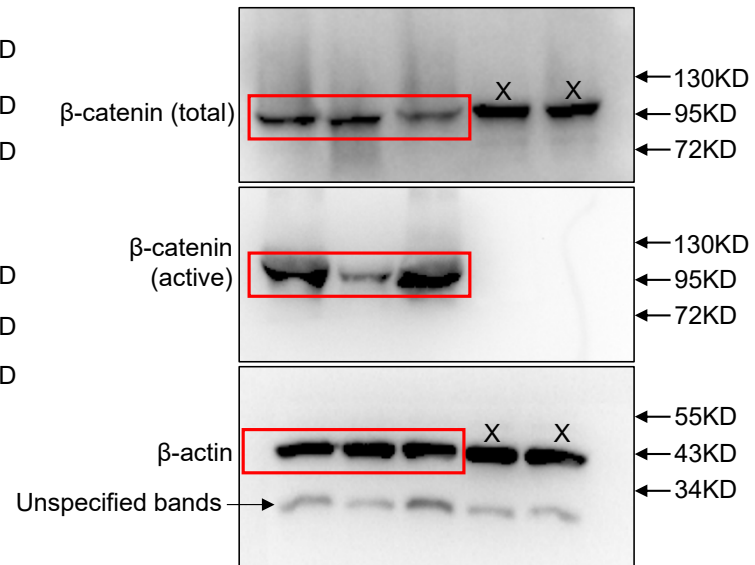


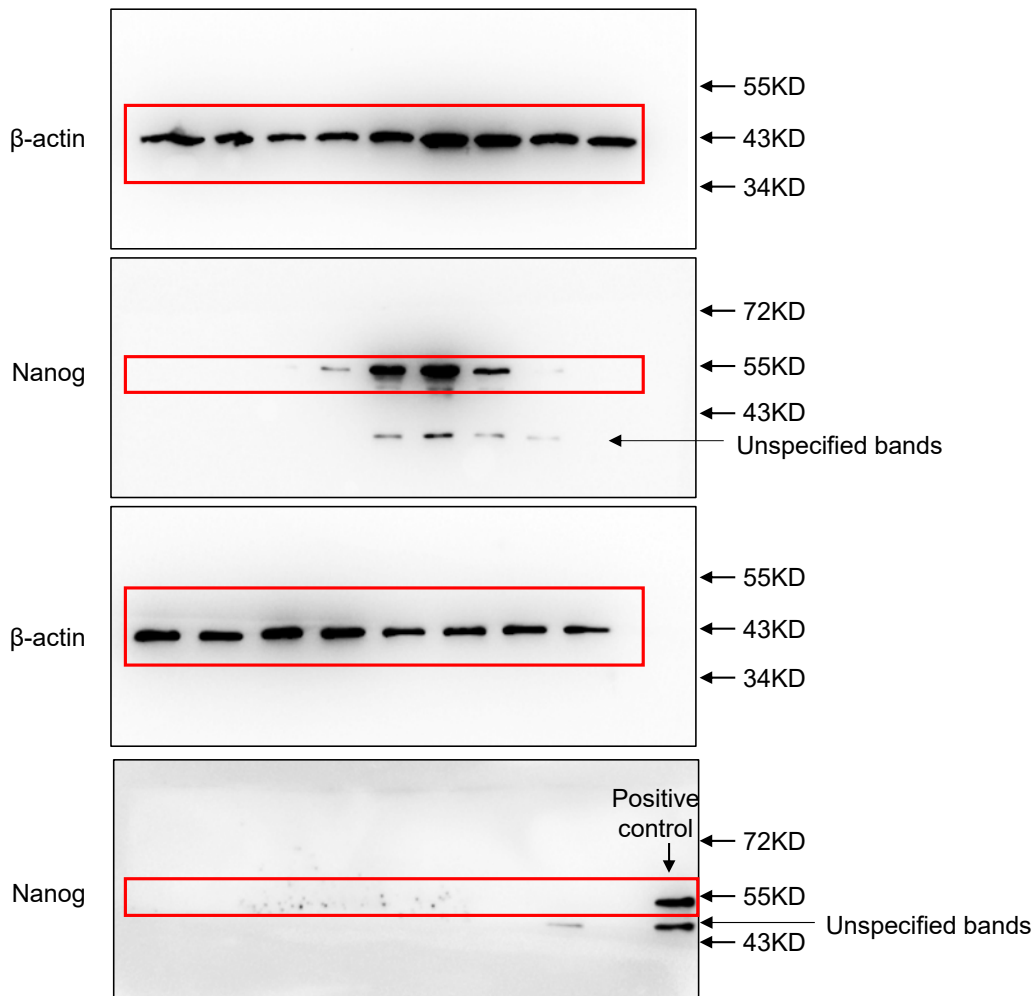
Uncropped blots for Figure 2C



Uncropped blots for Figure 5D

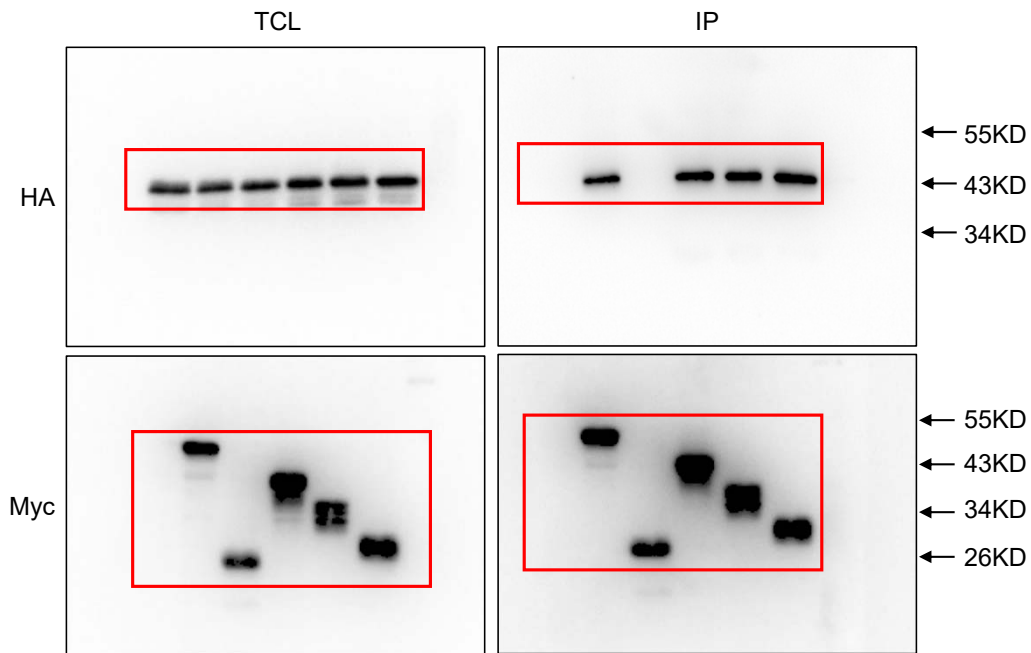


Uncropped blots for Figure 4A

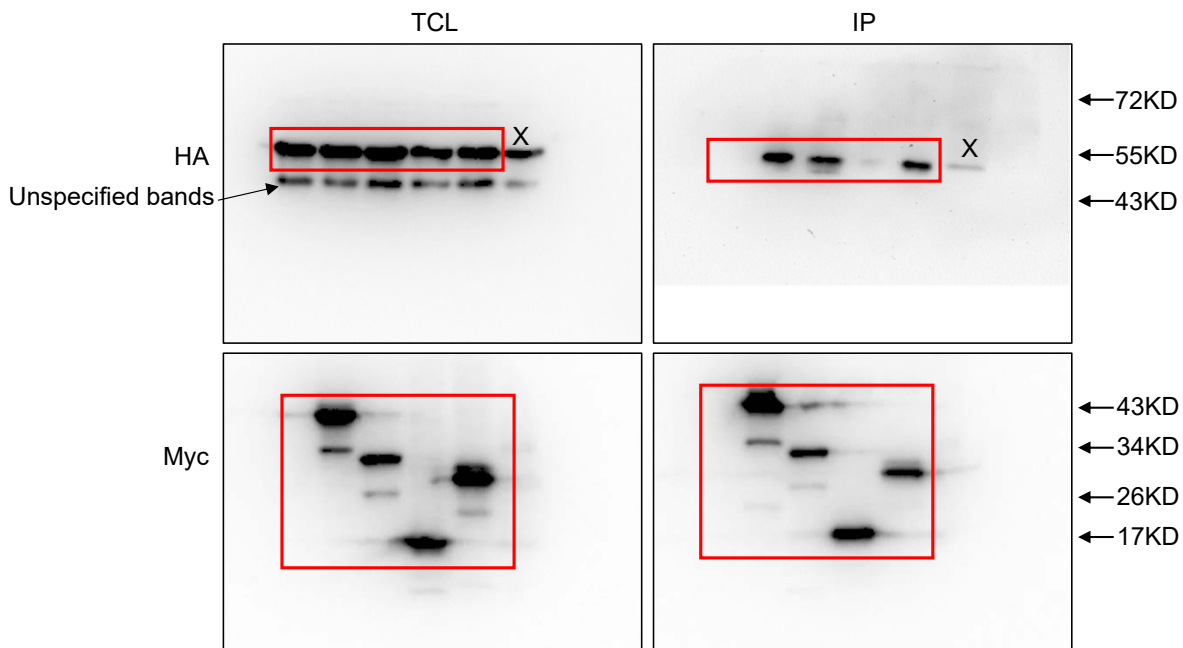


Images were acquired by ChemicDoc MP imaging system (BioRad, USA). Approximate molecular weight ladder was indicated. PVDF Membranes were cut for immunoblotting of more than one protein.

Uncropped blots for Figure 7A

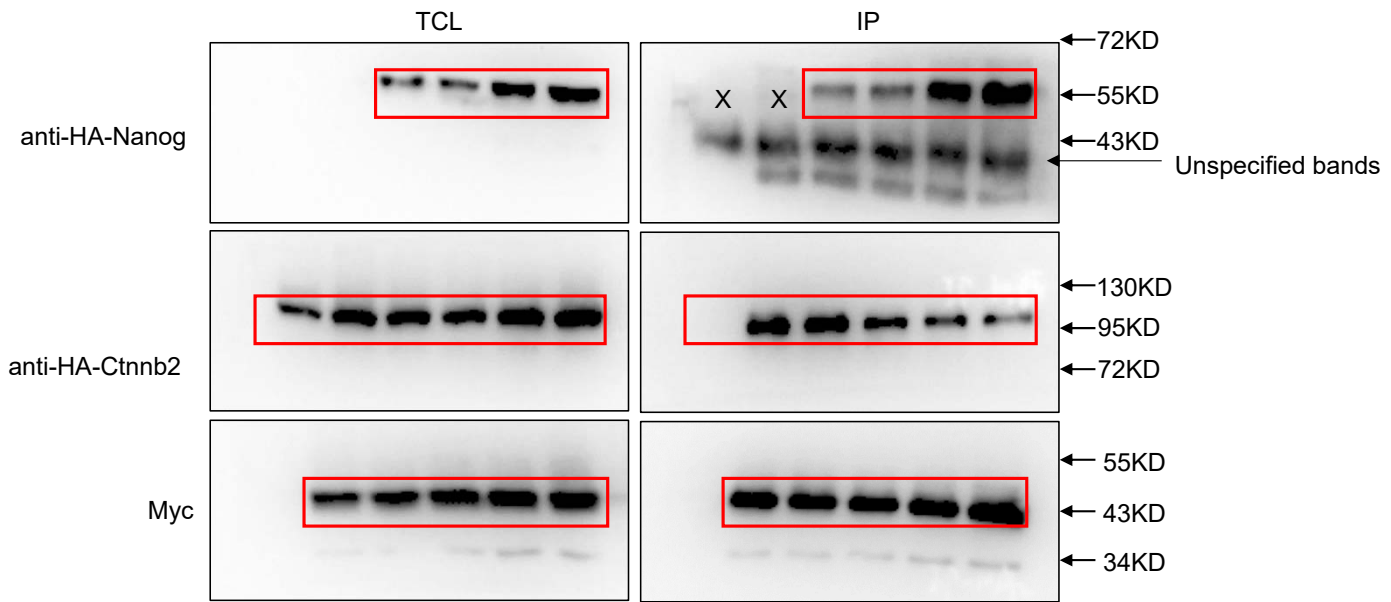


Uncropped blots for Figure 7B

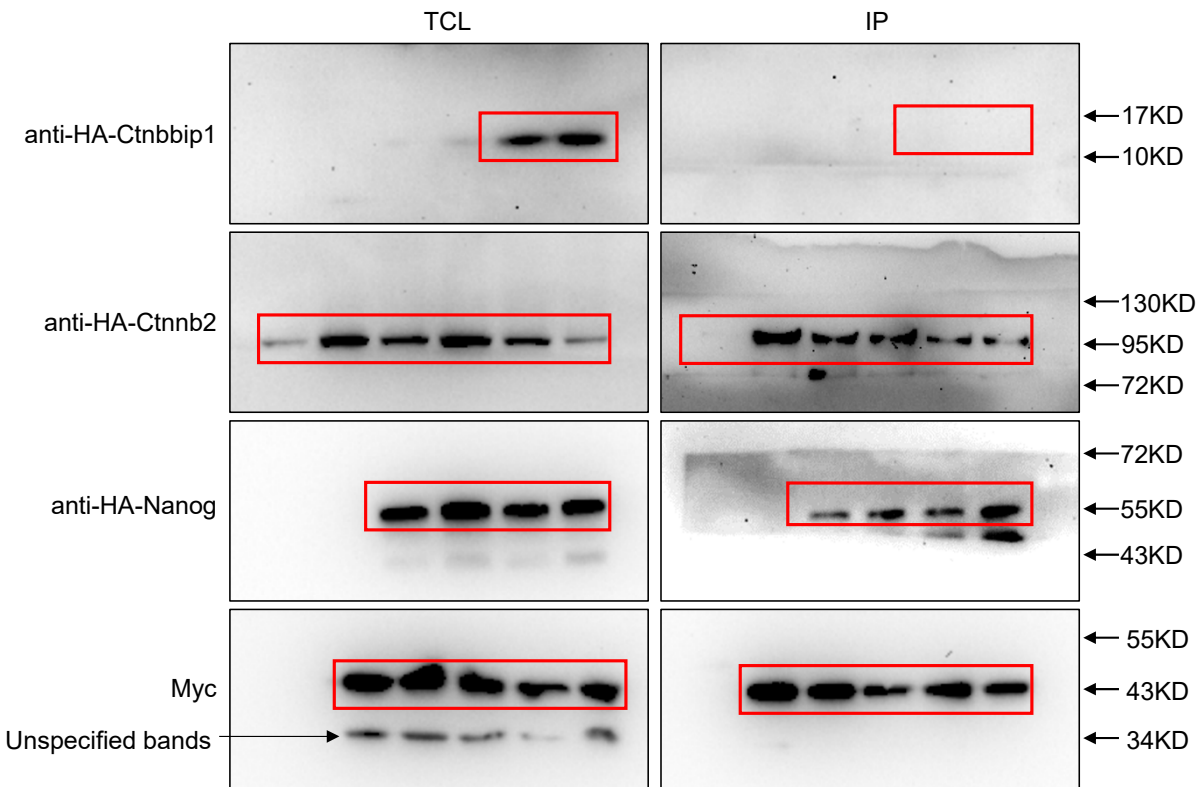


Images were acquired by ChemicDoc MP imaging system (BioRad, USA). Approximate molecular weight ladder was indicated. PVDF Membranes were cut for immunoblotting of more than one protein.

Uncropped blots for Figure 7C

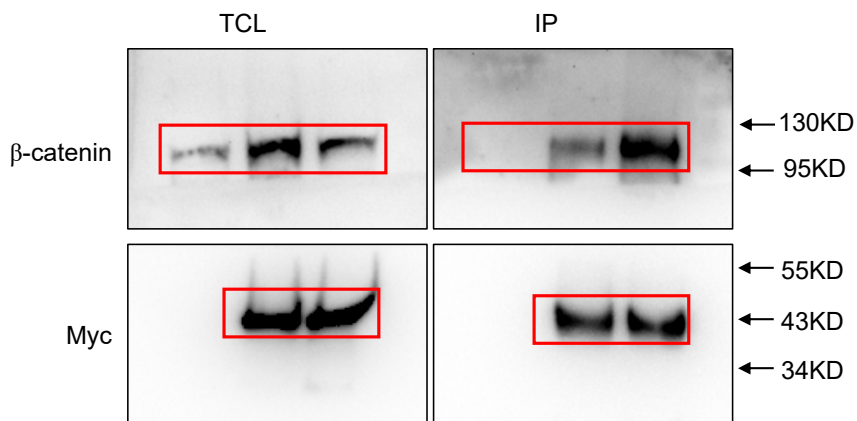


Uncropped blots for Figure 7D



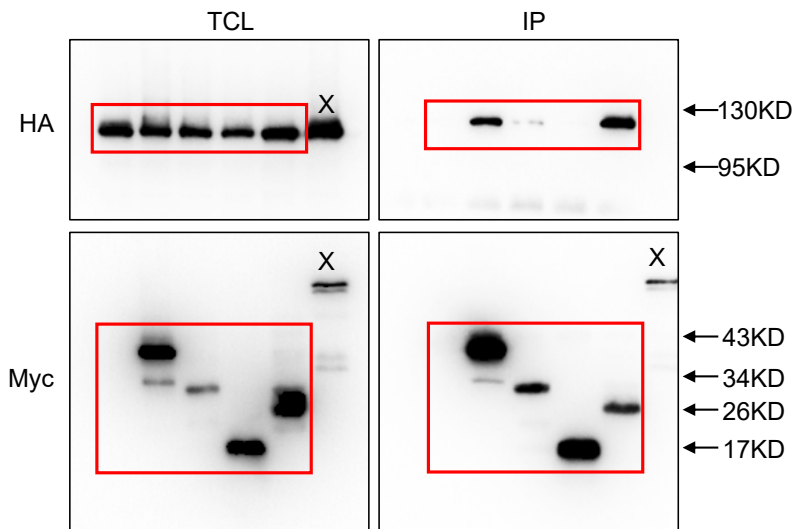
Images were acquired by ChemicDoc MP imaging system (BioRad, USA). Approximate molecular weight ladder was indicated. PVDF Membranes were cut for immunoblotting of more than one protein.

Uncropped blots for Figure 7E

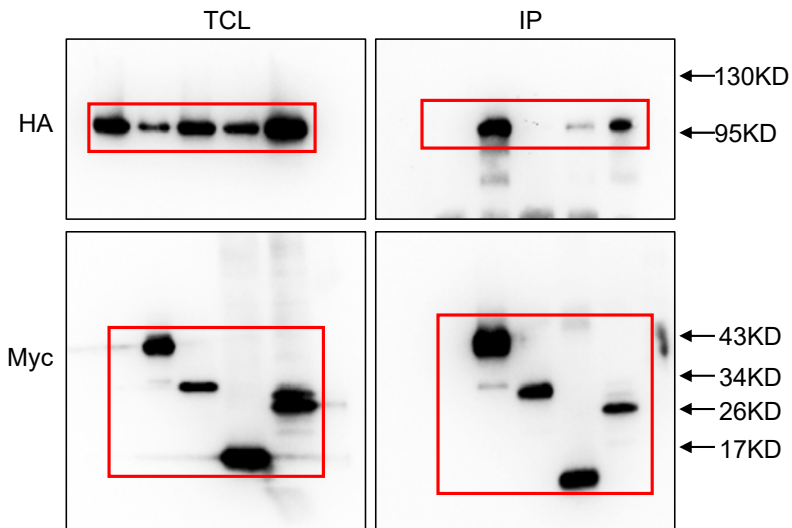


Images were acquired by ChemicDoc MP imaging system (BioRad, USA). Approximate molecular weight ladder was indicated. PVDF Membranes were cut for immunoblotting of more than one protein.

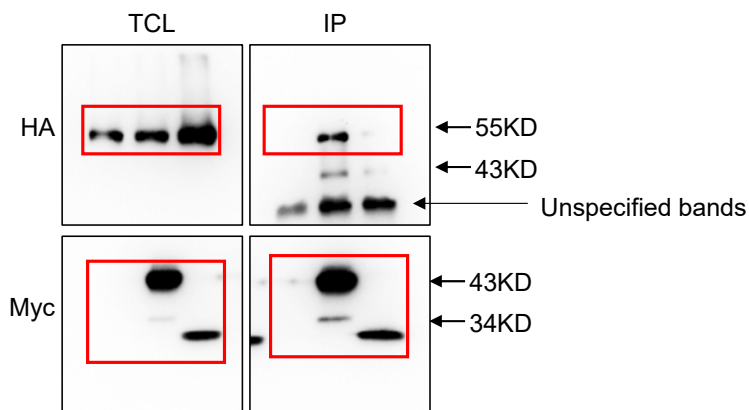
Uncropped blots for S10A Fig



Uncropped blots for S10B Fig



Uncropped blots for S10C Fig



Images were acquired by ChemicDoc MP imaging system (BioRad, USA). Approximate molecular weight ladder was indicated. PVDF Membranes were cut for immunoblotting of more than one protein.