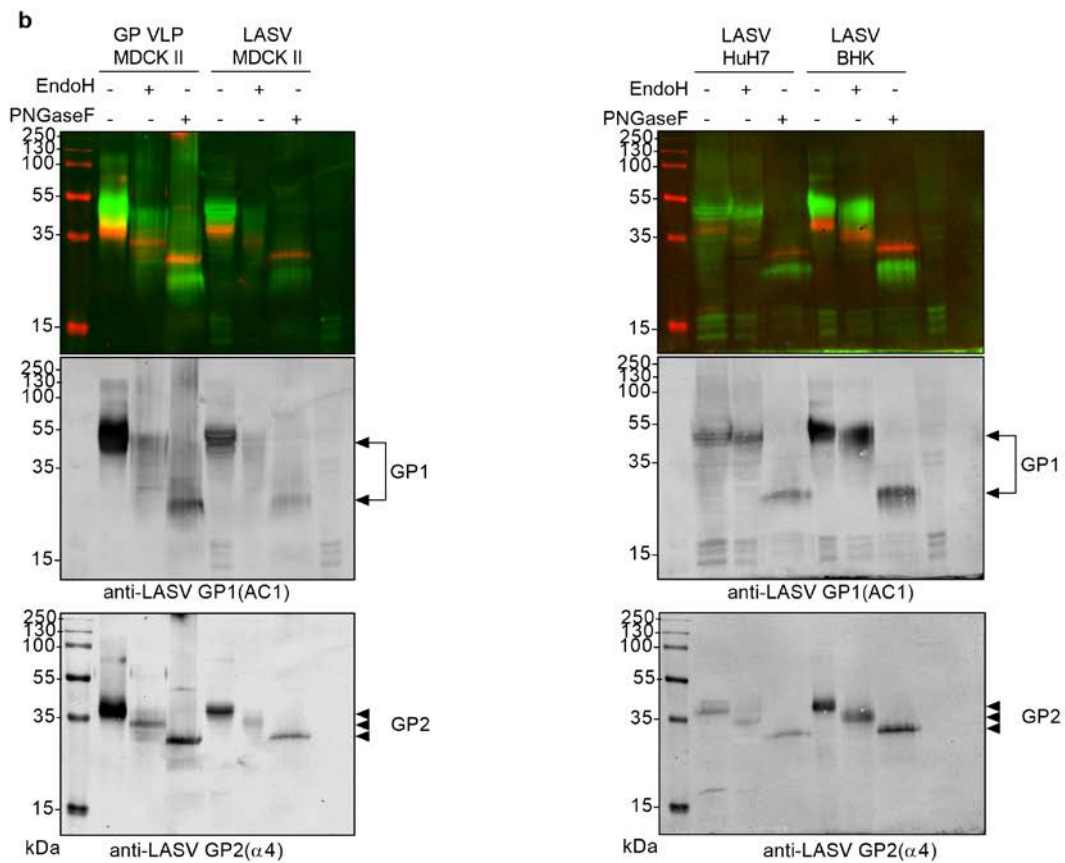
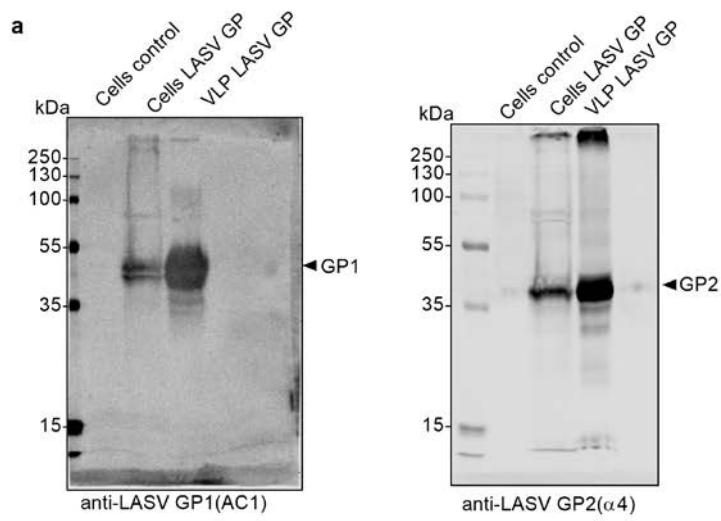


## Supplementary Information

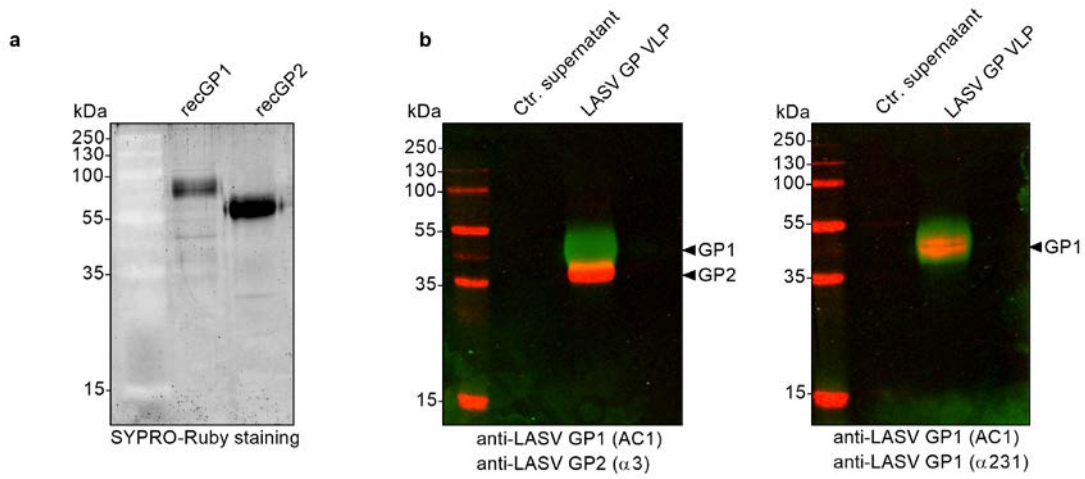
### **Adjuvant formulated virus-like particles expressing native-like forms of the Lassa virus envelope surface glycoprotein are immunogenic and induce antibodies with broadly neutralizing activity**

Helena Müller, Sarah Katharina Fehling, Jens Dorna, Richard A. Urbanowicz, Lisa Oestereich, Yvonne Krebs, Larissa Kolesnikova, Martin Schauflinger, Verena Krähling, N'Faly Magassouba, Elisabeth Fichet-Calvet, Jonathan K. Ball, Andreas Kaufmann, Stefan Bauer, Stephan Becker, Veronika von Messling, Thomas Strecker

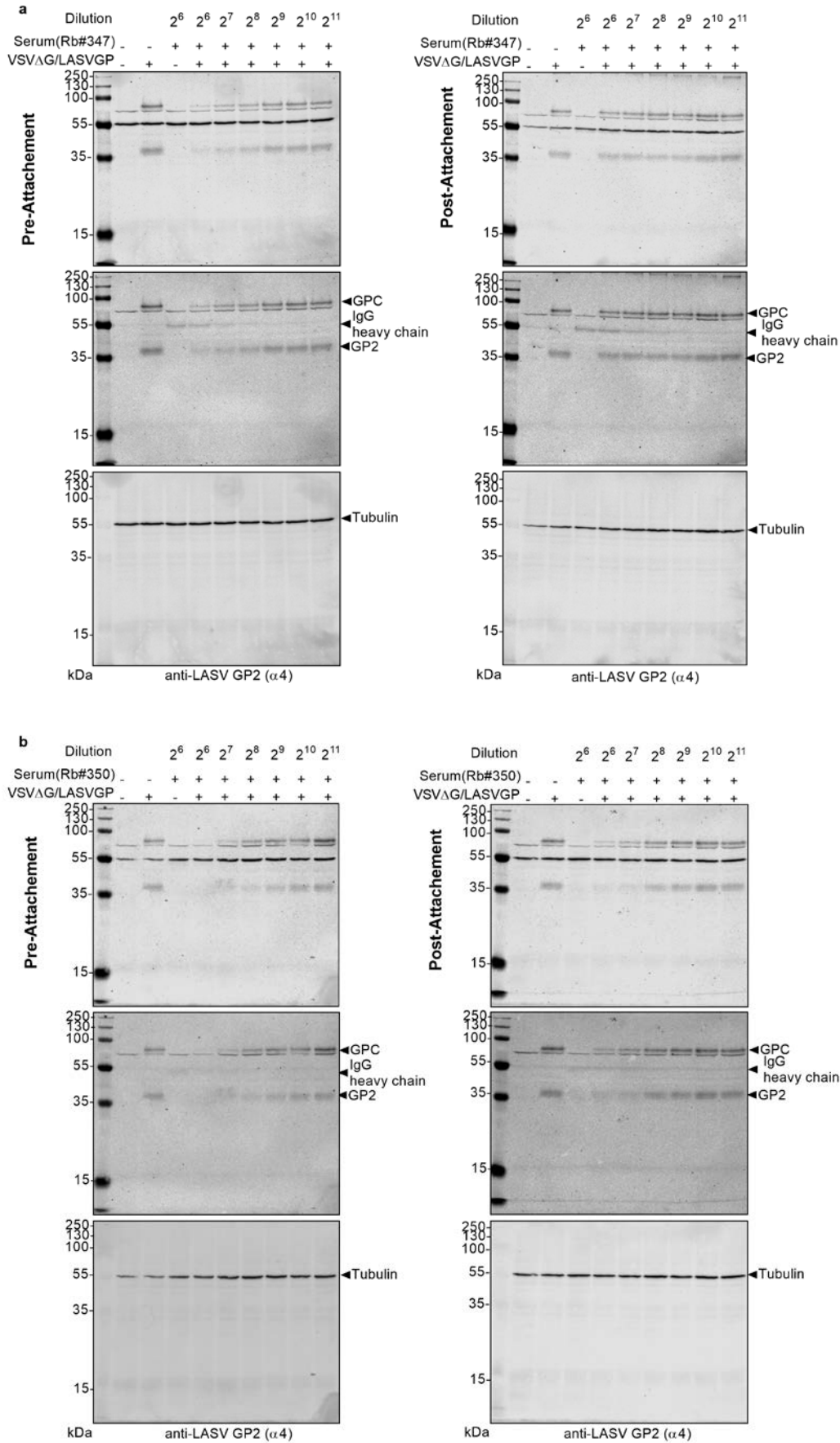
Supplementary Figures S1-4: Full-length pictures of gels/blots presented in the main figures.



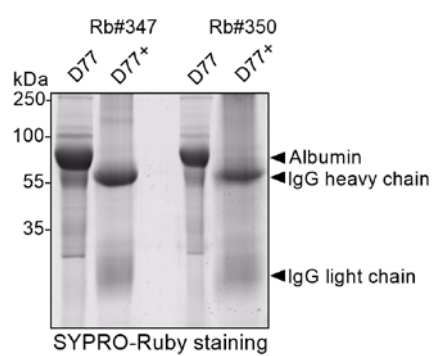
**Supplementary Fig. S1:** (a) Full-length pictures of the blots presented in Figure 1b. (b) Full-length picture of the blots presented in Figure 1d.



**Supplementary Fig. S2:** (a) Full-length picture of the gel presented in Figure 3b. (b) Full-length pictures of the blots presented in Figure 3c.



**Supplementary Fig. S3:** (a) Full-length pictures of the blots presented in Figure 7a. (b) Full-length pictures of the blots presented in Figure 7b.



**Supplementary Fig. S4:** Picture of the gel presented in Figure 8a. The gel image was cropped after scanning and saved as original file. The full-length picture of the gel is no longer available.