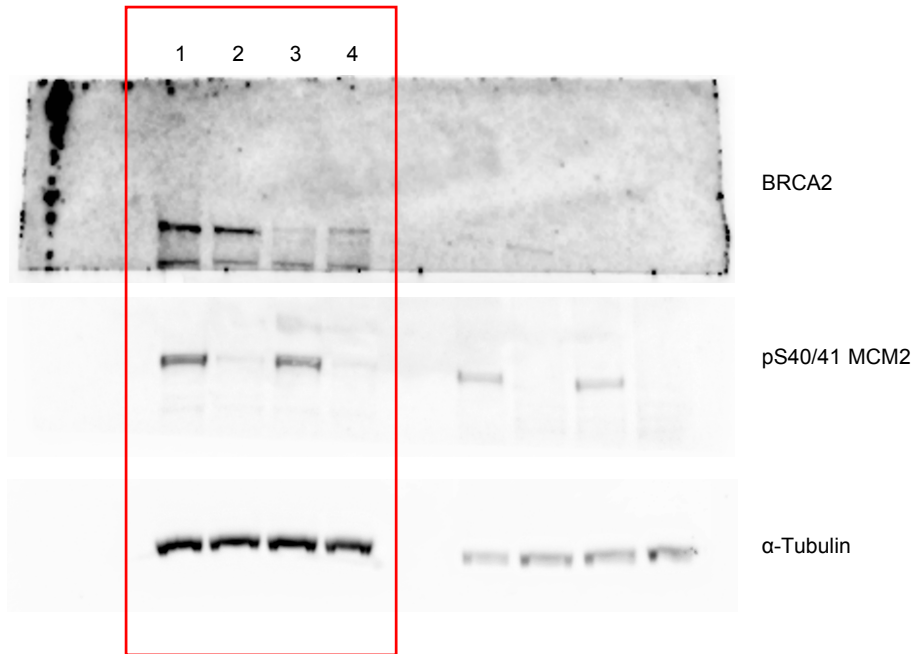


**Figure 5B**  
**Source data**

Lanes used to  
compile Figure 5B



**Figure 5C source data**

IdU/CldU tract length ratio\_U2OS cells (Fork degradation)

	siLuc	siLuc XL413	siBRCA2	siBRCA2 XL413
1	0.9397261	0.8350306	0.5848485	0.8980582
2	0.9581152	0.90625	0.6188437	1.108824
3	1.135734	0.9440389	0.7968254	1.078212
4	1.142529	0.5939086	0.9291667	1.327314
5	0.9260355		0.7268409	0.957359
6	1.184713	0.684058	0.9417475	1.027027
7	1.051414	0.9455253	0.6578947	0.6305085
8	0.7411168	1.478814	0.4561403	0.8461539
9	1.124514	0.9333333	0.6405229	0.9190938
10	0.8130435	0.5533597	0.7890625	0.8014184
11	1.142857	1.016529	0.8046875	0.7107143
12	0.9407666	0.8242424	1.012121	1.276423
13	0.8809524	0.8396226	1.13486	1.234501
14	1.111111	0.6890756	1.016598	1.417795
15	1.1	0.8049645	0.8233083	1.01087
16	0.7027027	0.9946808	0.9320755	1.304825
17	0.832967		0.4753521	1.306962
18	0.8813131	0.9478827	0.5701358	1.024793
19	0.8495822	0.9846154	0.7476038	1.069588
20	0.9699399	0.8732395	0.8083067	0.8844086
21	0.9742268	0.9530387	0.7172012	1.062112
22	0.8137931	1.10303	1.157895	1.167043
23	1.190323	0.9833333	0.6650831	1.27686
24	1.09375	1.037037	0.4844961	1.023077
25	0.9164345	1.052632	0.6875	0.6449865
26	0.8984375	1.323843	0.5748503	0.8333333
27	0.8362069	0.7239819	0.5820106	0.6627566
28	0.931677	0.9848101	0.6124567	0.6887417
29	1.421622	1.116751	0.7663817	0.8293413
30	0.7814815	0.8111888	0.85918	1.01
31	1.368644	1.032323	0.794686	0.8566775
32	1.04607	0.8677494	0.739785	0.7749287
33	1.204778	1.349333	0.7982709	0.8208955
34	1.105983	0.8401015	0.8316151	1.069498
35	1.323782	0.7656676	0.7224265	0.9752475
36	0.9302832	1.241935	0.7089109	1.140496
37	1.018767	1.026906	0.5022124	0.908642
38	0.9972299	0.9392097	1.097484	1.052506
39	1.402948	0.8721228	0.764881	0.9121495
40	1.114973	0.6700507	0.38921	0.3970588

41	0.9324675	0.6738545	0.7473684	1.125698
42	0.99729	0.8521127	0.625	0.6576577
43	0.6740332	1.241611	0.7433962	0.8666667
44	1.05638	0.9093851	0.8285714	1.025316
45	0.9239544	1.059524	0.584375	0.9918033
46	1.018391	0.9846547	0.6614907	1.13164
47	0.9600798	0.7582418	0.6864111	0.9156977
48	0.9141274	1	0.8229814	1.221925
49	1.309091	0.6756098	0.6059783	0.9681697
50	0.9001849	1.214477	0.7753087	1.031884
51	1.125257	1.166667	0.6688524	0.7902098
52	1.046154	0.8845361	0.7624633	1.00885
53	1.19697	1.20274	0.5205811	1.125
54	0.8903654	0.7682243	0.7727273	1.045714
55	0.9	1.42492	0.6654136	1.032738
56	1.100946	1.176471	0.705298	0.8401254
57	0.7168368	1.123377	0.5812183	1.173729
58	0.9371428	1.338673	0.5379538	0.99
59	0.9701195	1.0525	0.6413374	1.093842
60	0.9055118	1.4125	0.9699571	1.487261
61	0.9674621	0.8860294	0.7511961	0.8760504
62	0.6117936	1.060606	0.4798206	0.7032258
63	0.9477807	1.068452	0.6596639	1.029674
64	0.9240506	1.225564	0.4832215	0.8228228
65	1.036675	0.9342629	0.9372694	1.208589
66	1.039216	0.79375	1	0.9577115
67	1.140805	0.9637462	0.6280992	0.9061785
68	0.9558011	0.7946429	0.5824468	1.095652
69	0.9444444	0.5877438	0.5934066	0.9527273
70	0.9876923	0.9067524	0.6433824	0.8236715
71	1.074919	0.990566	0.6227106	0.6566416
72	0.8174157	1.027601	0.900277	1.074713
73	0.8434164	1.141868	0.9575163	0.9252077
74	1.148936	0.8868613	0.6656716	1.129794
75	0.9364706	0.8893617	0.7304965	0.9141791
76	0.8577586	0.9579832	0.5555556	1.134658
77	0.8681462	0.8899676	0.5932204	1.156118
78	1.207477	0.9458333	0.5833333	1.123116
79	1.063686	1.336032	0.7696202	1.11499
80	1.106013	0.9169329	0.9328859	1.057143
81	0.960961	1.071225	0.9271255	1.027397
82	1.313629	1.007905	0.3992095	1.367133
83	1.041276	0.9196429	1.011407	1.293333
84	1.089015	1.014842	0.8717949	0.9644381

85	1.343802	0.7394958	0.6832918	1.070588
86	1.339683	1.138264	0.7205882	1.175589
87	1.068293	0.8665105	0.9339623	1.083183
88	0.5547619	0.908805	0.8164893	1.022684
89	1.04955	1.170051	0.5735294	0.7743363
90	0.8872017	0.9935898	1.01847	1.389058
91	0.8194444	1.372671	0.5409357	1.095064
92	1.186567	0.9020619	0.6835443	1.10177
93	1.004688	1.119403	1.023529	1.165079
94	1.030445	1.30597	0.5818182	1.237237
95	1.076923	1.171717	0.6464646	1.044543
96	0.9058824	1.278431	0.5582822	0.5840909
97	1.237245	1.070288	0.7444444	0.8046595
98	0.8555241	1.153846	0.7584098	1.359036
99	1.096591	0.9976304	0.7692308	1.065217
100	0.619171	1.26009	0.6829787	0.7602041
101	1.035336	0.8648649	0.6785714	1.092084
102	1.031646	1.086207	1.019608	0.7925445
103	1.065892	1.054744	0.9770408	1.189796
104	1.049816	1.017301	0.6643836	1.017544
105	1.064655	1.316804	0.7491166	1.023411
106	0.8251748	1.051195	0.5643836	1.088
107	1.062157	1.107817	0.7329193	1.105691
108	1.268949	0.8764846	0.6325582	0.8361702
109	1.210736	0.8535211	0.5183946	1.001758
110	1.142857	1.03563	0.9154078	0.9508671
111	0.9631902	1.20911	1.057508	0.887689
112	1.180157	1.244804	0.9046053	0.9709544
113	1.162095	1.101626	1.080925	0.947541
114	1.226829	1.240088	0.6580882	1.013889
115	1.336043	0.8903654	0.8486842	0.8025135
116	1.447761	1.404348	0.8418079	0.4428969
117	0.6930233	0.9962049	0.8349282	0.9452736
118	1.224382		0.7096774	0.9702233
119	1.03352	1.51579	0.6895425	0.47981
120	1.057416	0.9543011	0.7923977	0.6198502
121	1.160287	0.9815436	0.6056338	0.8568421
122	0.9257504	1.260309	0.6769663	1.045894
123	1.007557	0.8770492	1.070313	0.8844086
124	1.089404	1.192946	0.7344633	0.8568376
125	0.9801527		0.7872341	0.7175792
126	1.132936		1.05802	0.8834952
127	1.034121		0.829932	1
128	1.390716		1.059748	

129	0.9701231		0.7967914	
130	1.079625		0.946502	
131			0.9669967	
132			0.7340425	
133			0.472028	
134			0.8160535	
135			0.480663	
136			0.5471204	
137			0.8054608	
138			0.5390244	
139			0.5635179	
140			0.4115756	
141			0.5735294	
142			0.890785	
<b>Mean</b>	<b>1.02</b>	<b>1.01</b>	<b>0.74</b>	<b>0.98</b>

### Figure 5D source data

Mean values of IdU/CldU tract length ratio\_U2OS cells (Fork degradation - 3 independent experiments)

Experiment	siLuc	siLuc XL413	siBRCA2	siBRCA2 XL413
1	0.994	1.004	0.791	0.916
2	0.975	1.140	0.737	0.905
3	1.024	1.010	0.740	0.984

### Figure 5F source data

Percentage of reversed forks\_U2OS cells

siLuc (78)	siLuc XL413 (92)	siBRCA2 (72)	siBRCA2 XL413 (74)
23	23	12	22

Parenthesis indicates the number of reversed forks counted

**Figure 5G source data**

Length of ssDNA (nucleotides) at junctions

	siLuc HU	siLuc HU + XL413	siBRCA2 HU	siBRCA2 HU + XL413
1	131.1	50.6	43.7	326.6
2	154.1	223.1	253	200.1
3	85.1	163.3	207	142.6
4	52.9	80.5	138	96.6
5	126.5	59.8	55.2	135.7
6	66.7	133.4	220.8	73.6
7	64.4	80.5	195.5	230
8	239.2	73.6	110.4	144.9
9	140.3	328.9	340.4	101.2
10	46	225.4	89.7	138
11	324.3	184	308.2	96.6
12	46	144.9	342.7	87.4
13	147.2	78.2	264.5	110.4
14	52.9	96.6	55.2	140.3
15	161	69	165.6	142.6
16	133.4	34.5	117.3	48.3
17	64.4	243.8	142.6	301.3
18	1108.6	101.2	234.6	94.3
19	71.3	59.8	299	179.4
20	167.9	48.3	165.6	154.1
21	52.9	94.3	225.4	133.4
22	133.4	52.9	69	112.7
23	57.5	59.8	96.6	342.7
24	133.4	809.6	89.7	78.2
25	177.1	48.3	575	135.7
26	372.6	170.2	248.4	124.2
27	112.7	128.8	524.4	78.2
28	50.6	165.6	522.1	416.3
29	80.5	156.4	128.8	103.5
30	259.9	85.1	138	220.8
31	59.8		400.2	78.2
32			241.5	246.1
33			144.9	
34			184	
35			133.4	
36			264.5	
37			135.7	
38			292.1	
<b>Mean</b>	<b>157.22</b>	<b>141.68</b>	<b>214.81</b>	<b>156.69</b>