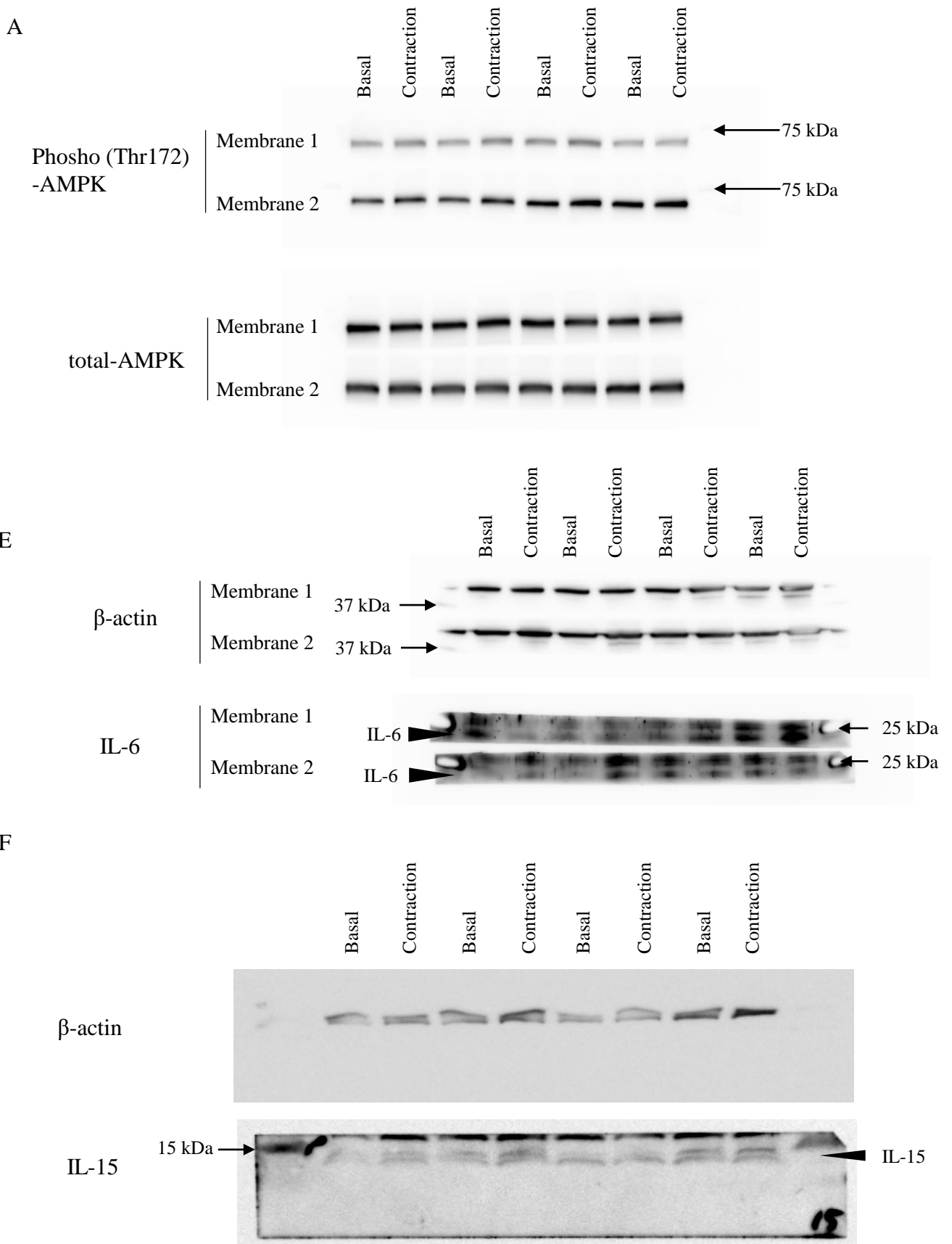
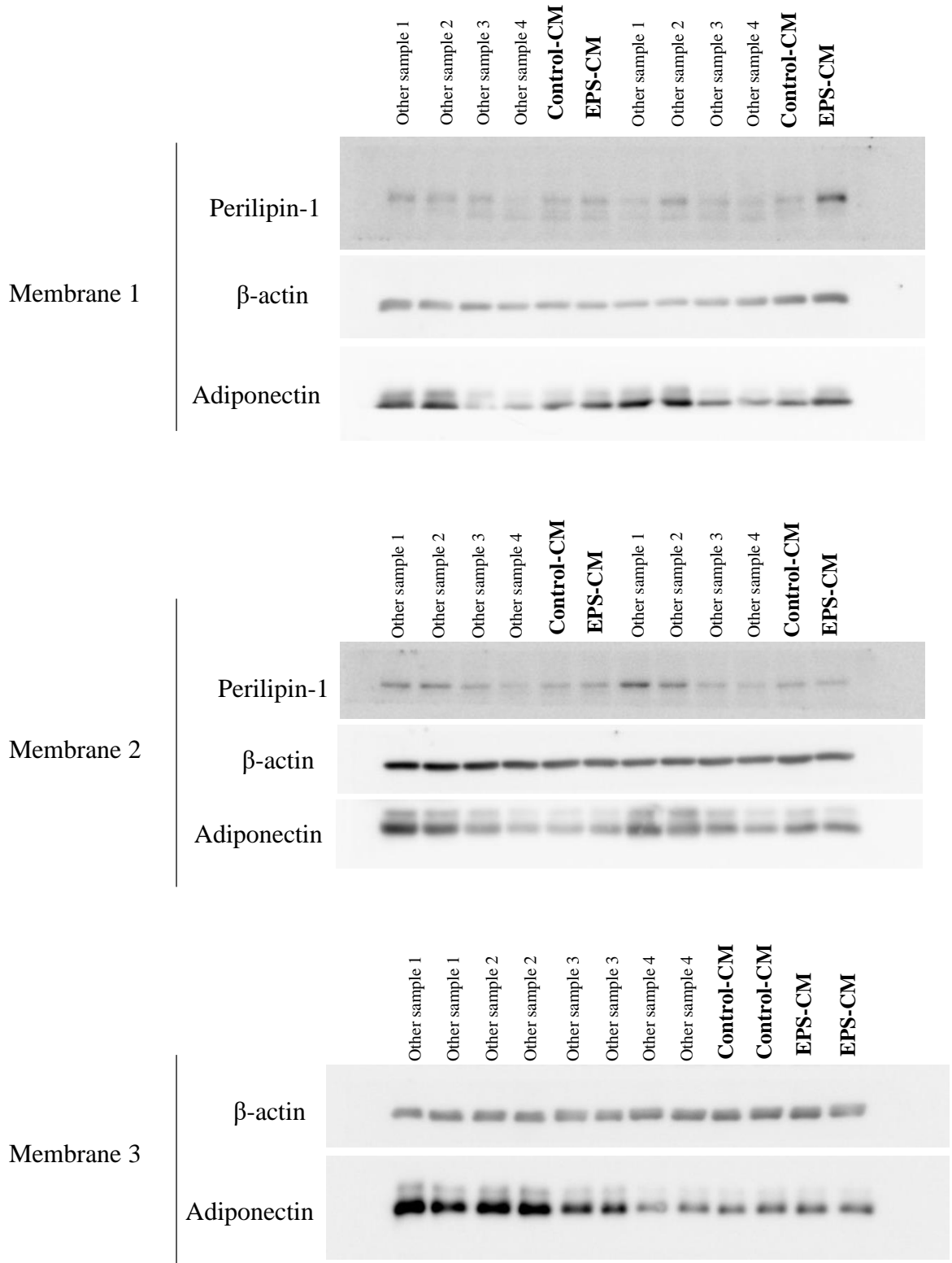


Blot images of Fig 1A, E, F



Detection of IL-6 and IL-15 in the myotube EPS-CM was validated in our previous study [17].

Blot images of Fig 3D & 4A (1)



Membranes were cut into three pieces and perilipin-1 (62 kDa), β -actin (45 kDa), and adiponectin (27 kDa) were detected, respectively. Other samples were excluded from the results.
 Other sample 1, 2: non-cell Control-CM, EPS-CM.
 Other sample 3, 4: myoblast Control-CM, EPS-CM.
 Other sample 5, 6: <3 kDa fraction of myotube Control-CM, EPS-CM.
 Other sample 7, 8: ≥ 3 kDa fraction of myotube Control-CM, EPS-CM

Blot images of Fig 3D & 4A (2)

