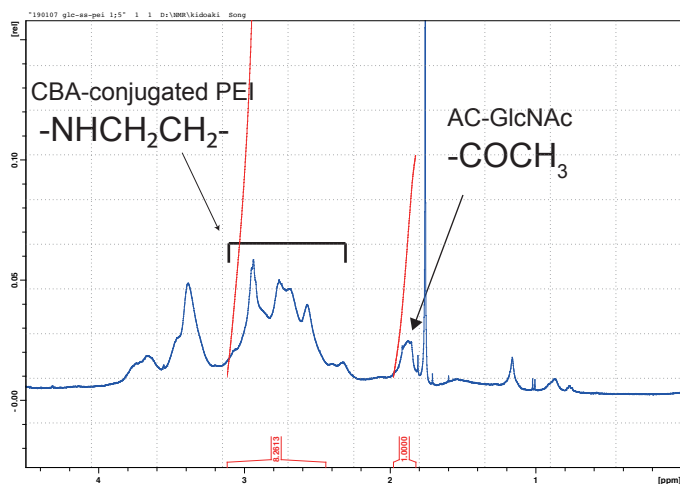
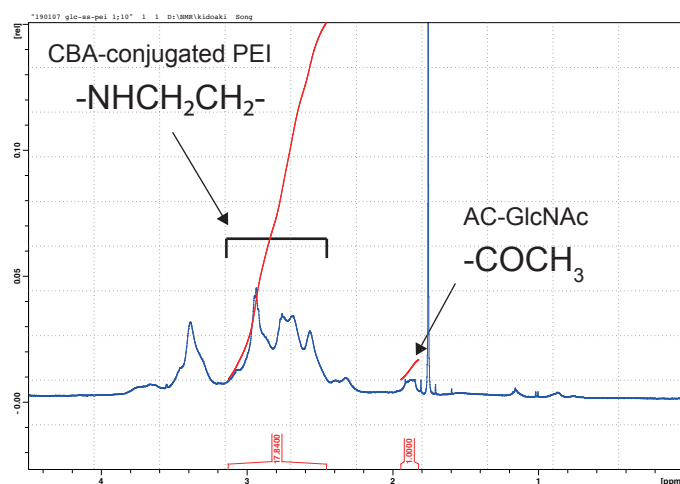


Figure S1: GPC chromatogram of AC-GlcNAc. Calibration curve was produced based on a pullulan standard.

### AC-GlcNAc-conjugated PEI (1 : 5)



### AC-GlcNAc-conjugated PEI (1 : 10)



### AC-GlcNAc-conjugated PEI (1 : 20)

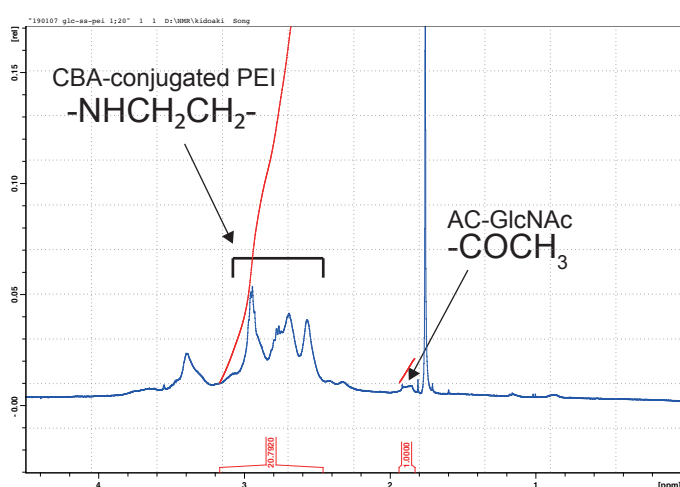


Figure S2: Nuclear magnetic resonance charts of AC-GlcNAc-conjugated polyethyleneimine (PEI) (1:5, 1:10, and 1:20).

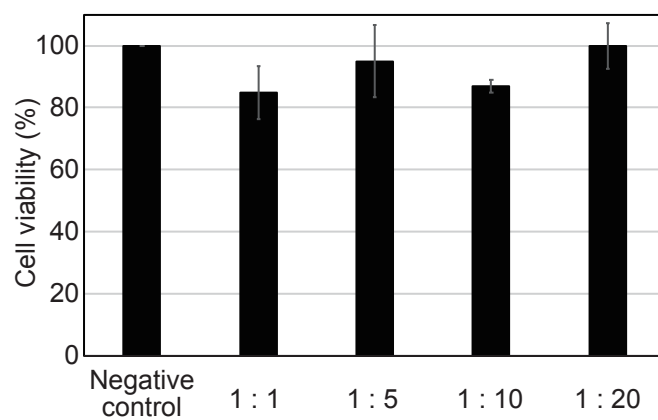


Figure S3: Evaluation of cell viability (%) of normal human dermal fibroblasts (NHDFs) after treatment with AC-GlcNAc-conjugated polyethylenimine (PEI) complexes (1:1, 1:5, 1:10, and 1:20) based on a CCK-8 assay. n = 6