

NSUN5 promotes CRC progression via cell cycle regulation

Table S1. List of primary antibodies used in the study

Antibody	Applications	Company (CAT#)
NSUN5	IHC, WB	Ab121633
CDK4	WB	Proteintech 11026-1-AP
CDK6	WB	Proteintech 14052-1-AP
P21	WB	CST#2974
Rb	WB	CST#9309
pRb	WB	CST#8516
CCNE1	WB	Ab85639
Caspase3	WB	Ab13847
C-caspase3	WB	Ab2303
Bcl-2	WB	Ab32124
GAPDH	WB	Proteintech 60004-1-Ig
β -Tublin	WB	Proteintech10094-1-AP
7-AAD	FCM	Biolegend 640930
APC Annexin V	FCM	Biolegend 640930
PI	FCM	Biolegend 421301

NSUN5 promotes CRC progression via cell cycle regulation

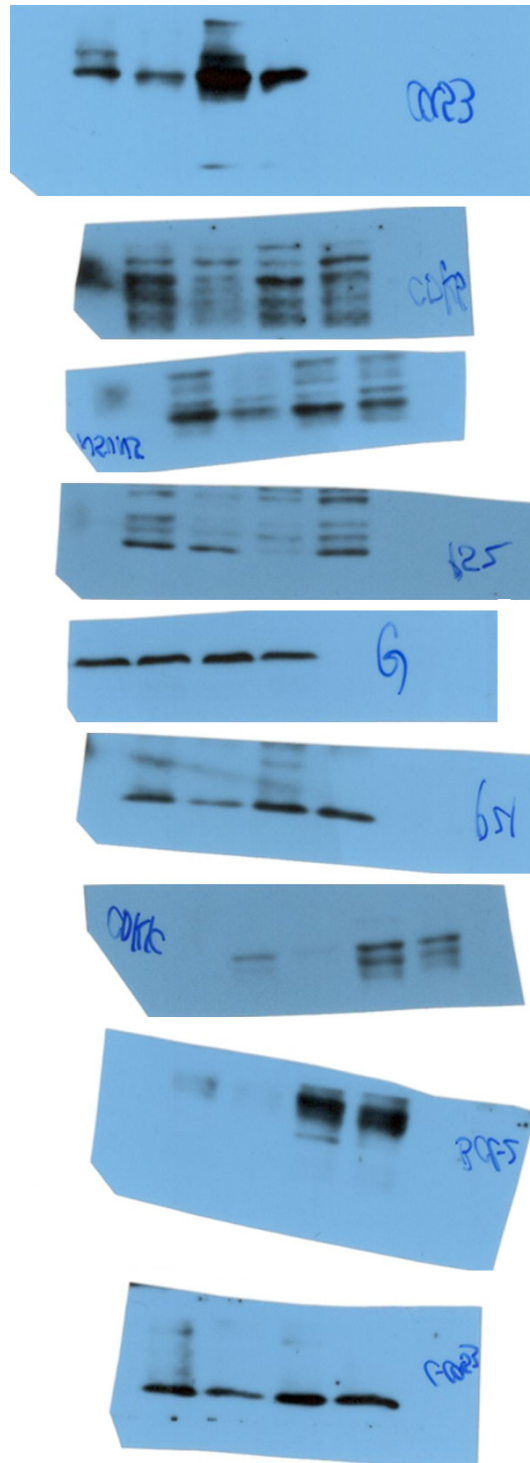


Figure S1. The original western images of GAPDH, CDK4, CDK6, NSUN5, Bcl-2, Caspase-3, Cleaved-caspase-3.

NSUN5 promotes CRC progression via cell cycle regulation

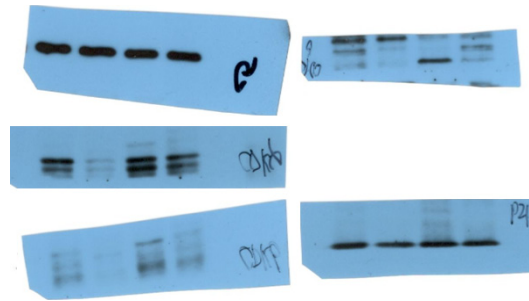


Figure S2. The original western images of GAPDH, CDK4, CDK6, P21.

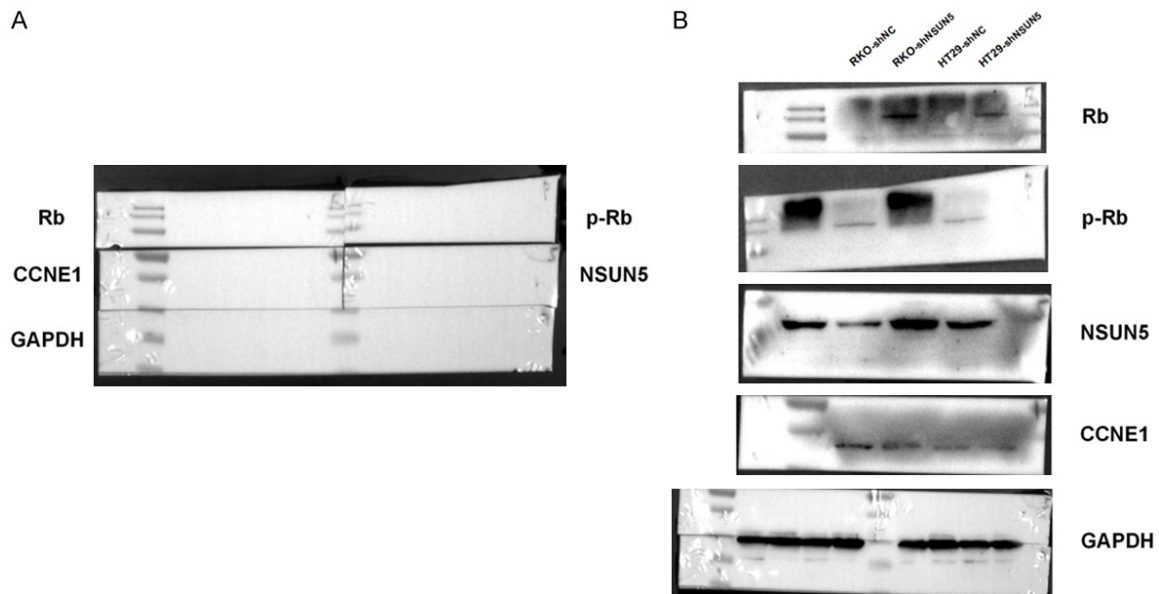


Figure S3. A. The original image of the integral membrane. B. The original western images of GAPDH, Rb, p-Rb, NSUN5, CCNE1.

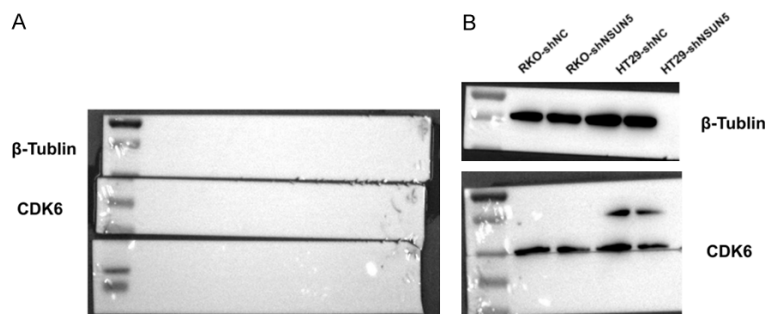


Figure S4. A. The original image of the integral membrane. B. The original western images of beta-Tubulin and CDK6.