

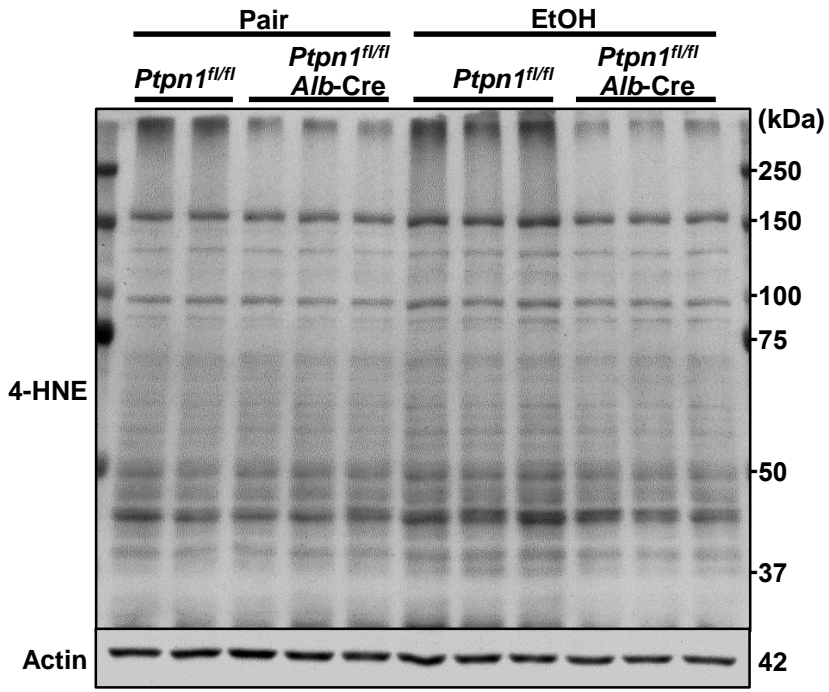
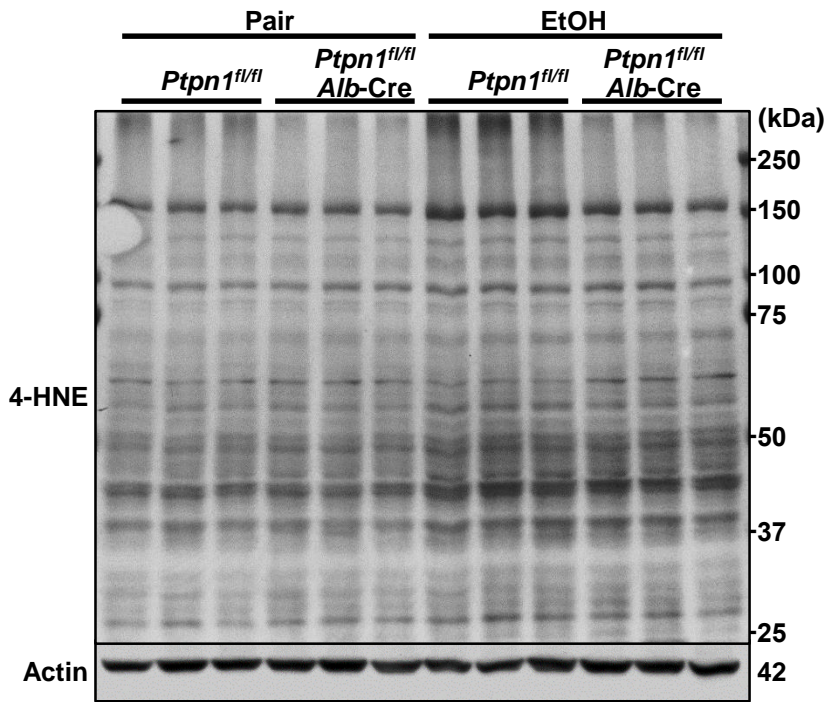
Supplementary Table 1.**List of antibodies used in immunoblotting and immunofluorescence studies**

Antibody	Host	Company	Catalog #	Dilution
PTP1B (mouse)	Goat	R&D Systems	AF3954	1:2000
PTP1B (human)	Mouse	Millipore	MABS197	1:500 (IF)
GAPDH	Mouse	Cell Signaling	3683	1:5000
F4/80	Rabbit	Cell Signaling	70076	1:500 (IF)
pNF-κB p65 Ser536	Rabbit	Cell Signaling	3033	1:5000
NF-κB p65	Rabbit	Cell Signaling	8242	1:5000
pAKT Ser473	Rabbit	Cell Signaling	4060	1:10000
pERK1/2 Thr202/Tyr204	Rabbit	Cell Signaling	4370	1:10000
ERK1/2	Rabbit	Cell Signaling	4695	1:10000
AKT	Mouse	Santa Cruz	sc-81434	1:1000
peNOS Ser1177	Rabbit	Santa Cruz	sc-21871-R	1:1000
eNOS	Mouse	Santa Cruz	sc-376751	1:1000
iNOS	Mouse	Santa Cruz	sc-7271	1:1000
SOD1	Mouse	Santa Cruz	sc-271014	1:2000
GPx1/2	Mouse	Santa Cruz	sc-133160	1:2000
CYP2E1	Rabbit	Abcam	ab28146	1:10000
NOX2	Rabbit	Abcam	ab129068	1:2500
NOX4	Rabbit	Abcam	ab216654	1:2500
4-HNE	Rabbit	Abcam	ab46545	1:3000, 1:500 (IF)

Supplementary Table 2.**List of primer sequences used in quantitative real-time PCR**

Gene	Forward	Reverse	Size (bp)
h-PTPN1	CGACCAGCTGCGCTTCTC	GTCCCCCATGATGAATTTGG	61
h-B2M	TTCTGGCCTGGAGGCTATC	TCAGGAAATTTGACTTTCCATTC	86
m-Il1b	TAGCTTCAGGCAGGCAGTATC	TAAGGTCCACGGGAAAGACAC	79
m-Ccl2	CCCAATGAGTAGGCTGGAGA	TCTGGACCCATTCTTCTTG	125
m-Tnfa	TGACGTGGAAGTGGCAGAAGAG	TTGCCACAAGCAGGAATGAGA	104
m-Adgre1	CTTTGGCTATGGGCTTCCAGTCC	GCAAGGAGGACAGAGTTTATCGTG	165
m-Ly6g	TGCGTTGCTCTGGAGATAGA	CAGAGTAGTGGGGCAGATGG	90
m-Pparg	TCTTAACTGCCGGATCCACAA	GCCCAAACCTGATGGCATT	104
m-Srebf1	GAGCCATGGATTGCACATTT	CTCAGGAGAGTTGGCACCTG	143
m-Fasn	GGAGGTGGTGATAGCCGGTAT	TGGGTAATCCATAGAGCCCAG	140
m-Cd36	GATGACGTGGCAAAGAACAG	TCCTCGGGGTCCTGAGTTAT	107
m-Scd	TTCTTGCGATACACTCTGGTGC	CGGGATTGAATGTTCTTGTCGT	98
m-Tbp	TGAGAGCTCTGGAATTGTAC	CTTATTCTCATGATGACTGCAG	147

Supplementary Figure S1



Supplementary Fig. S1. Ctrl (*Ptpn1^{fl/fl}*) and KO (*Ptpn1^{fl/fl}, Alb-Cre*) female mice were used in the chronic plus binge model. Pair: control diet + maltose gavage, EtOH: ethanol diet + ethanol gavage. Two sets of 4-HNE and Actin immunoblots in hepatic lysates are presented, and each lane represents an independent animal.