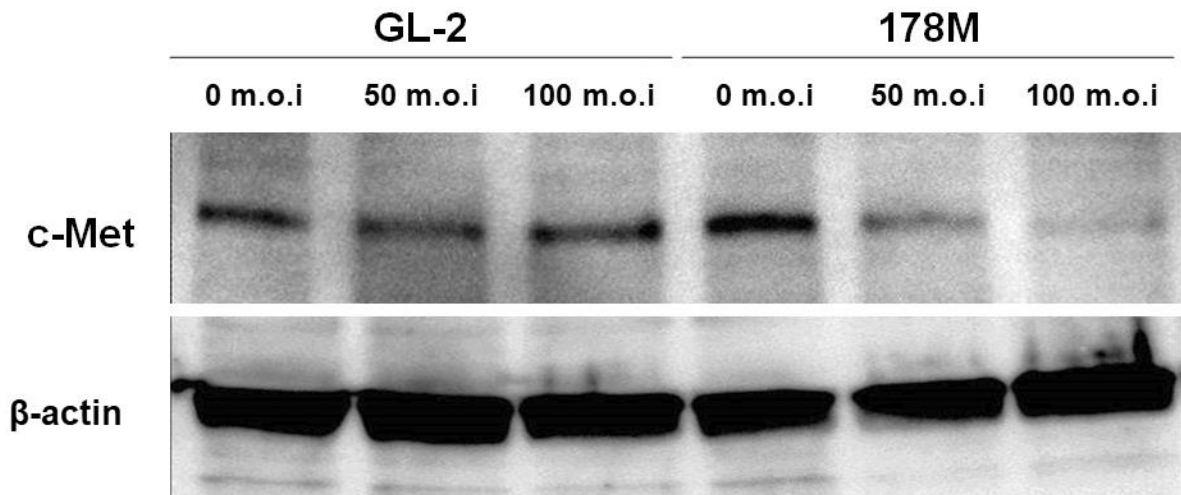


**Supplementary Figure S1.** A representative flow cytometric histogram plot of c-Met expression in NL17 cells. Filled histogram represents NL17 cells stained with isotype control antibody. The gray line represents NL17 cells stained with c-Met antibody. Approximately 85% of NL17 cells expressed c-Met.



**Supplementary Figure S2.** NL17 cells infected with 178M virus inhibited c-Met expression in an m.o.i.-dependent manner (NL17<sup>178M</sup>). Meanwhile, the NL17 cells infected with control virus (NL17<sup>GL-2</sup>) did not inhibit c-Met expression. At least three independent experiments were performed, and similar results were obtained.