

Article

Supplementary Oral Anamorelin Mitigates Anorexia and Skeletal Muscle Atrophy Induced by Gemcitabine Plus Cisplatin Systemic Chemotherapy in a Mouse Model

Makito Miyake, Shunta Hori, Yoshitaka Itami, Yuki Oda, Takuya Owari, Tomomi Fujii, Sayuri Ohnishi, Yosuke Morizawa, Daisuke Gotoh, Yasushi Nakai, Satoshi Anai, Kazumasa Torimoto, Nobumichi Tanaka and Kiyohide Fujimoto

Supplementary Materials

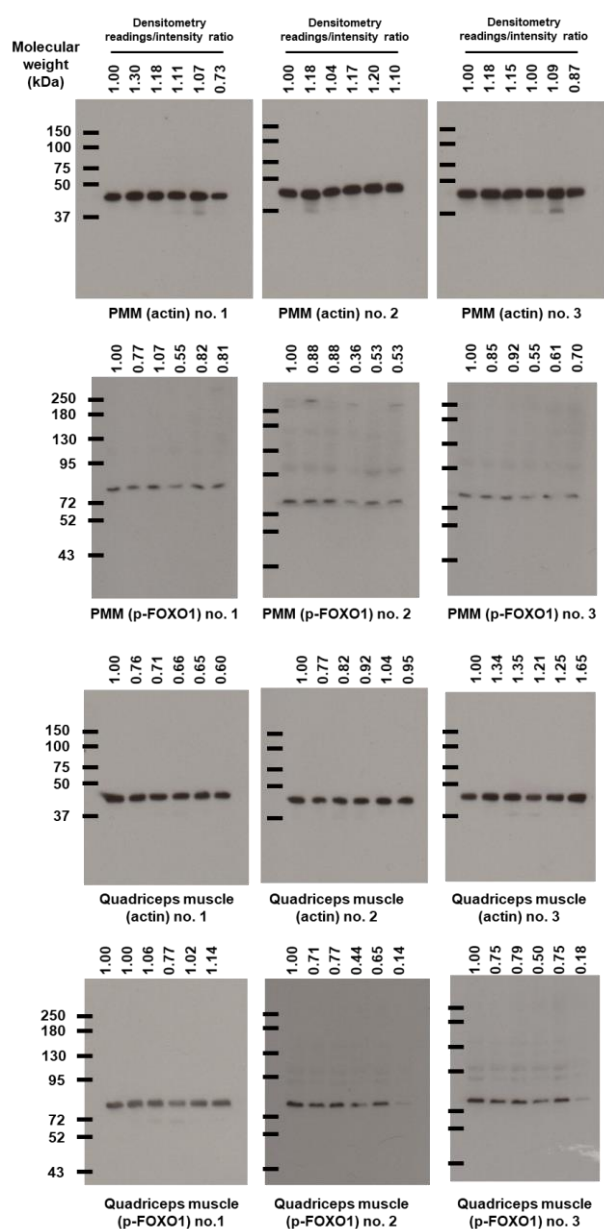


Figure S1. Photograph of full blots in Western blot analysis for p-FOXO1 and actin.

Table S1. Primary antibodies, TaqMan gene expression primers, and ELISA kits used in this study.

Target Gene or Protein	Provider	ID or Catalogue Number	Application
phospho-FOXO1	Novus Biologicals	NB100-81927	Western blot (dilution, 1:2000)
Actin	Sigma-Aldrich	clone AC-15	Western, blot (dilution 1:20,000)
MAFbx/Atrogin-1	ThermoFisher scientific	Mm00499523_m1	RT-PCR
MuRF1	ThermoFisher scientific	Mm01185221_m1	RT-PCR
Actin-beta	ThermoFisher scientific	Mm00607939_s1	RT-PCR
Ghrelin	Abcam	ab129383	Immunohistochemistry (dilution, 1:5000)
Active ghrelin	SCETI, Tokyo, Japan	97751	ELISA
Deacyl ghrelin	SCETI, Tokyo, Japan	97752	ELISA
IL-6	Proteintech Japan, Tokyo, Japan	KE10007	ELISA
IGF-1	Proteintech Japan, Tokyo, Japan	KE10032	ELISA
Albumin	Cloud-Clone Corp, TX, USA	CEB028Mu	ELISA
Creatinine	Crystal Chem, IL, USA	80350	ELISA

ELISA = enzyme-linked immunosorbent assay; FOXO1 = forkhead box protein O-1; RT-PCR = Reverse Transcription Polymerase Chain Reaction; MAFbx = muscle atrophy F-box; MuRF1 = muscle RING finger 1; IL-6 = interleukin-6; IGF-1 = Insulin-like growth factor-.