

Generation of Landmark-occluded Images

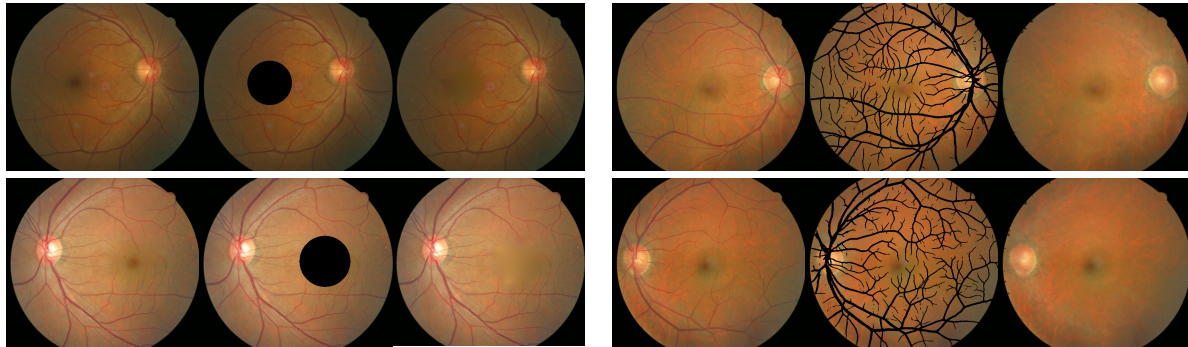


Figure S1. Illustration of generative processes for fovea-occluded images and vessel-occluded images. For fovea-occluded images, the center of the fovea and the optic disc were detected first by a separate deep learning algorithm. Then, the circle of fovea, which centers at the fovea with the radius of 0.3 times the distance between the fovea and the optic disc, was removed and inpainted. For vessel-occluded images, a vessel segmentation network extracts retinal vessels and pixels with the probability of being vessels above 0.2 were removed and inpainted.