

Article

In Vitro Mechanical and Biological Properties of 3D Printed Polymer Composite and β -Tricalcium Phosphate Scaffold on Human Dental Pulp Stem Cells

Shuaishuai Cao ^{1,2}, Jonghyeuk Han ³, Neha Sharma ^{1,2}, Bilal Msallem ^{1,2}, Wonwoo Jeong ³, Jeonghyun Son ³, Christoph Kunz ¹, Hyun-Wook Kang ^{3,*} and Florian M. Thieringer ^{1,2,*}

¹ Department of Oral and Cranio-Maxillofacial Surgery, University Hospital Basel, Spitalstrasse 21, 4031 Basel, Switzerland; shuaishuai.cao@unibas.ch (S.C.); neha.sharma@usb.ch (N.S.); bilal.msallem@usb.ch (B.M.); christoph.kunz@usb.ch (C.K.)

² Medical Additive Manufacturing Research Group, Department of Biomedical Engineering, University of Basel, Gewerbestrasse 16, 4123 Allschwil, Switzerland

³ Biomedical Engineering, School of Life Sciences, Ulsan National Institute of Science and Technology (UNIST), 50, UNIST-gil, Ulsan 44919, Korea; g14619@unist.ac.kr (J.H.); wwjeong@unist.ac.kr (W.J.); mgm4336@unist.ac.kr (J.S.)

* Correspondence: hkang@unist.ac.kr (H.-W.K.); florian.thieringer@usb.ch (F.M.T.)

Received: 18 May 2020; Accepted: 6 July 2020; Published: date

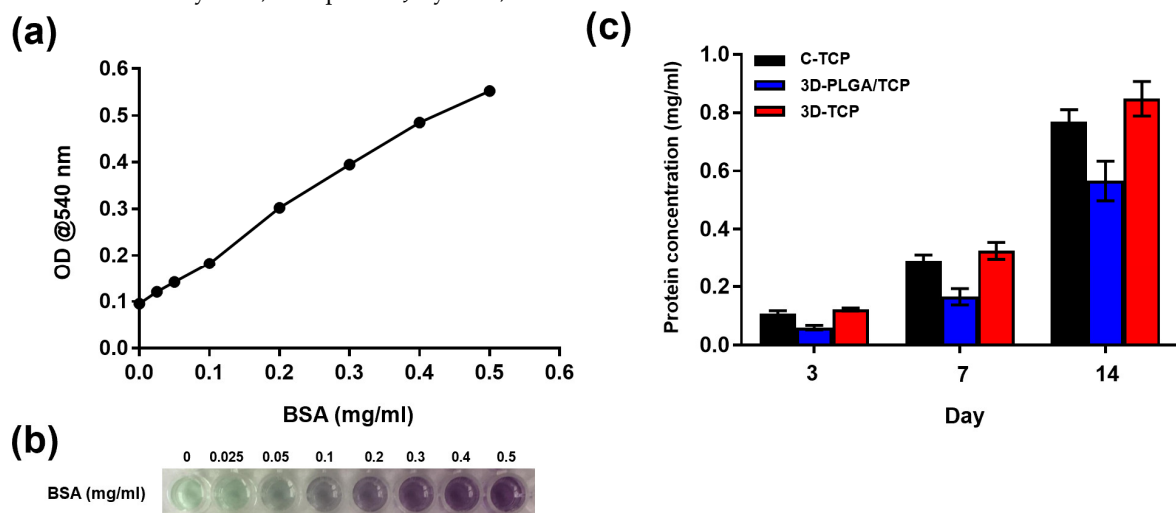


Figure S1. Protein concentration of C-TCP, 3D-PLGA/TCP, and 3D-TCP scaffolds. **(a)** Standard curve of bovine serum albumin (BSA) protein. **(b)** BSA protein staining for calculating standard curve. **(c)** Quantified protein concentration of C-TCP, 3D-PLGA/TCP, and 3D-TCP scaffolds on day 3, 7, and 14.