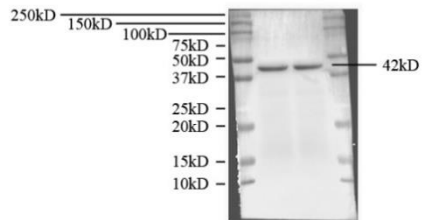


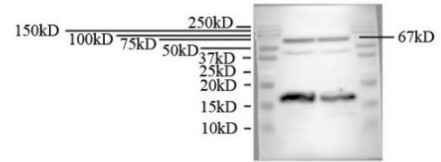
Original western blot images:

### Marker Figure

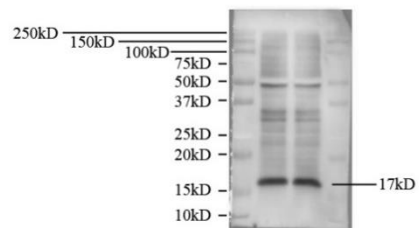
$\beta$ -actin



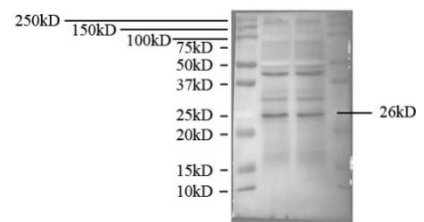
NOX4



Cleaved Caspase-3



Bcl-2



Bax

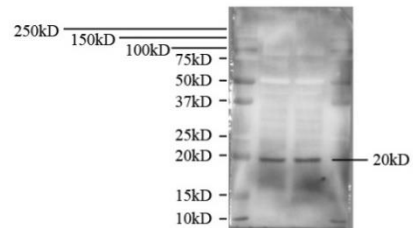


Figure 1.D

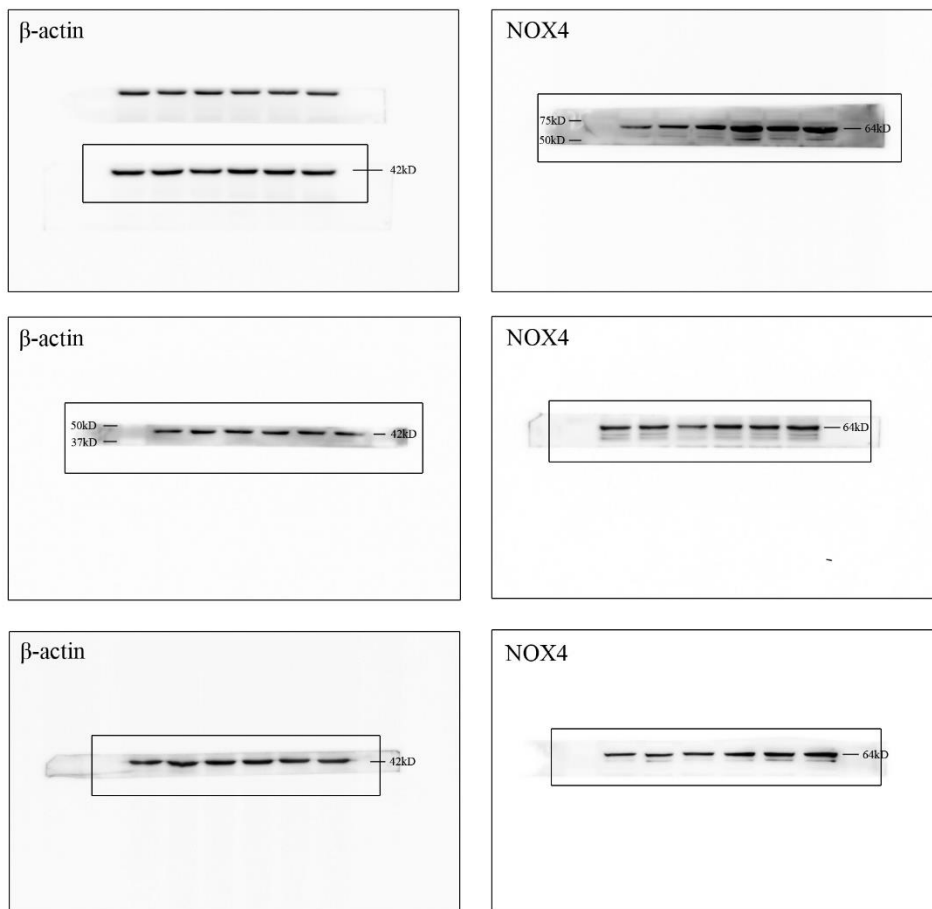


Figure.3.C

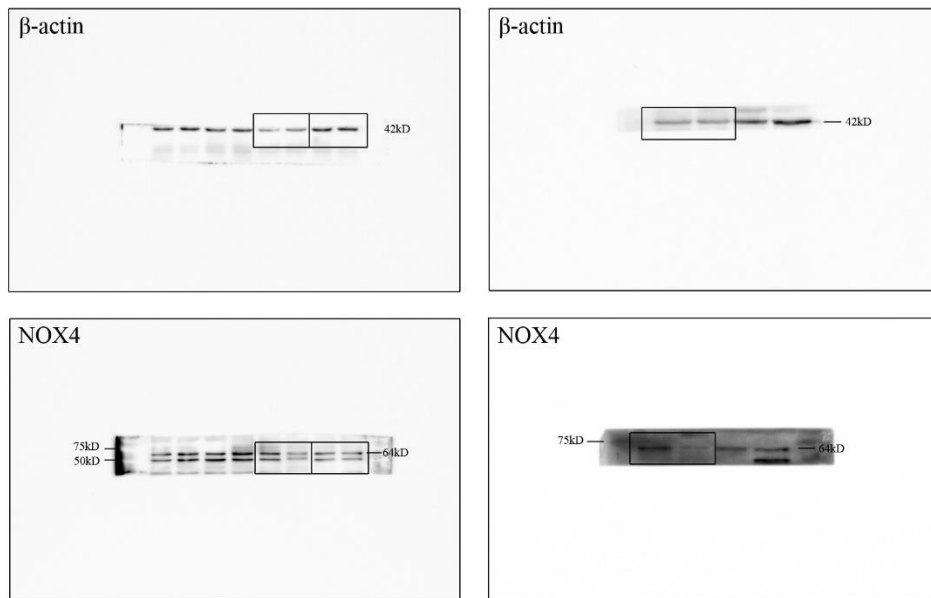


Figure.3.F

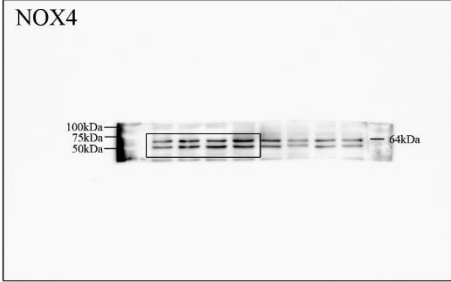
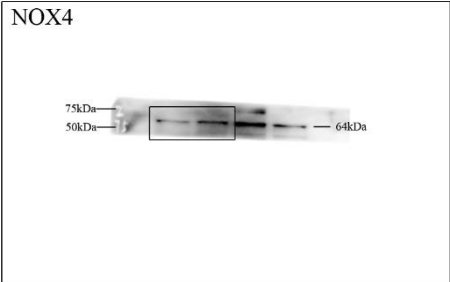
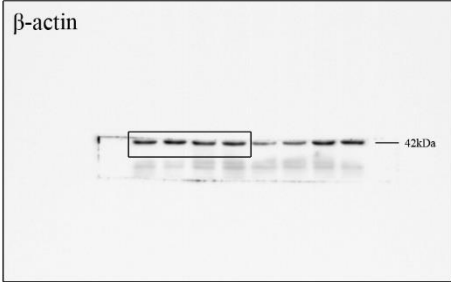
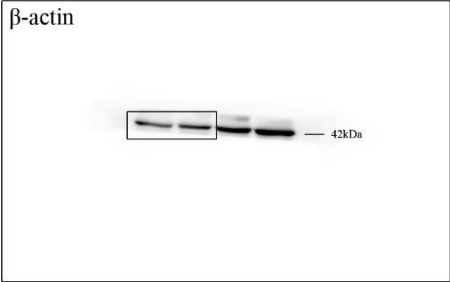




Figure.4.A

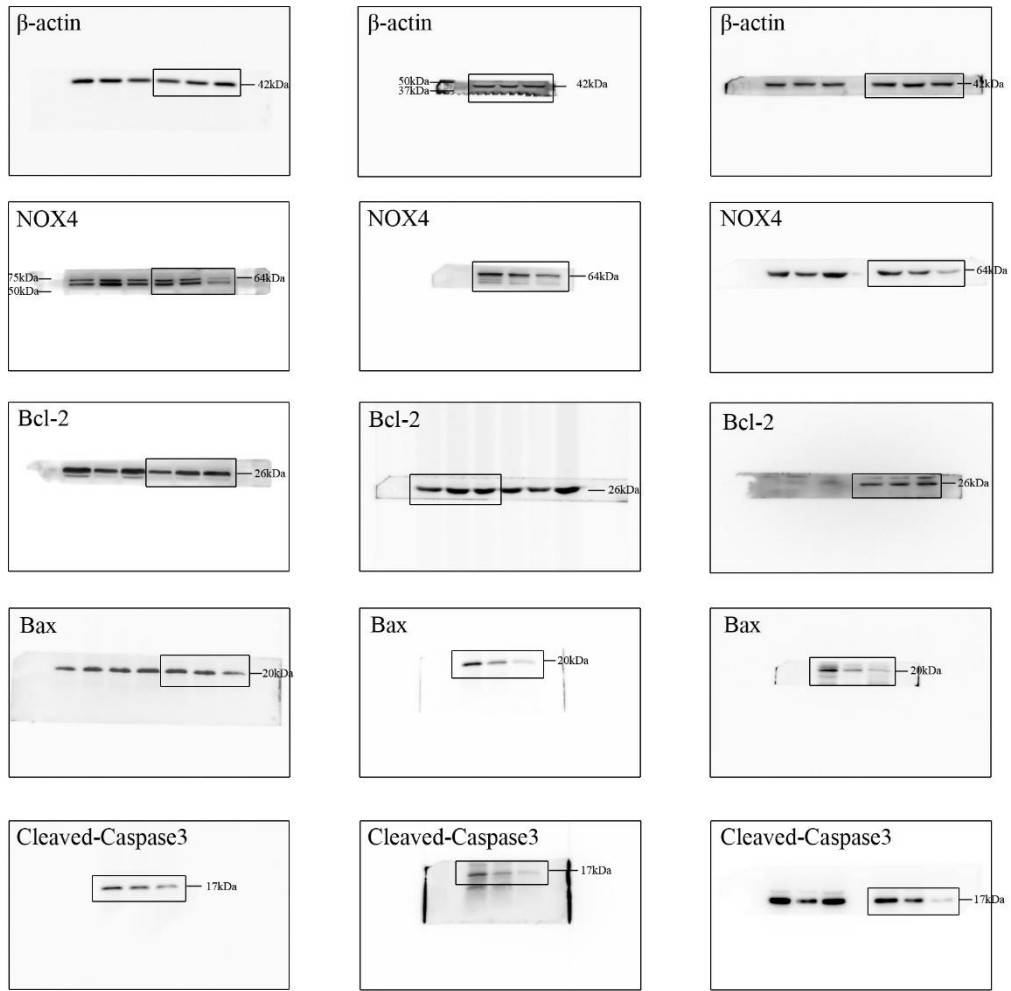


Figure.4.B

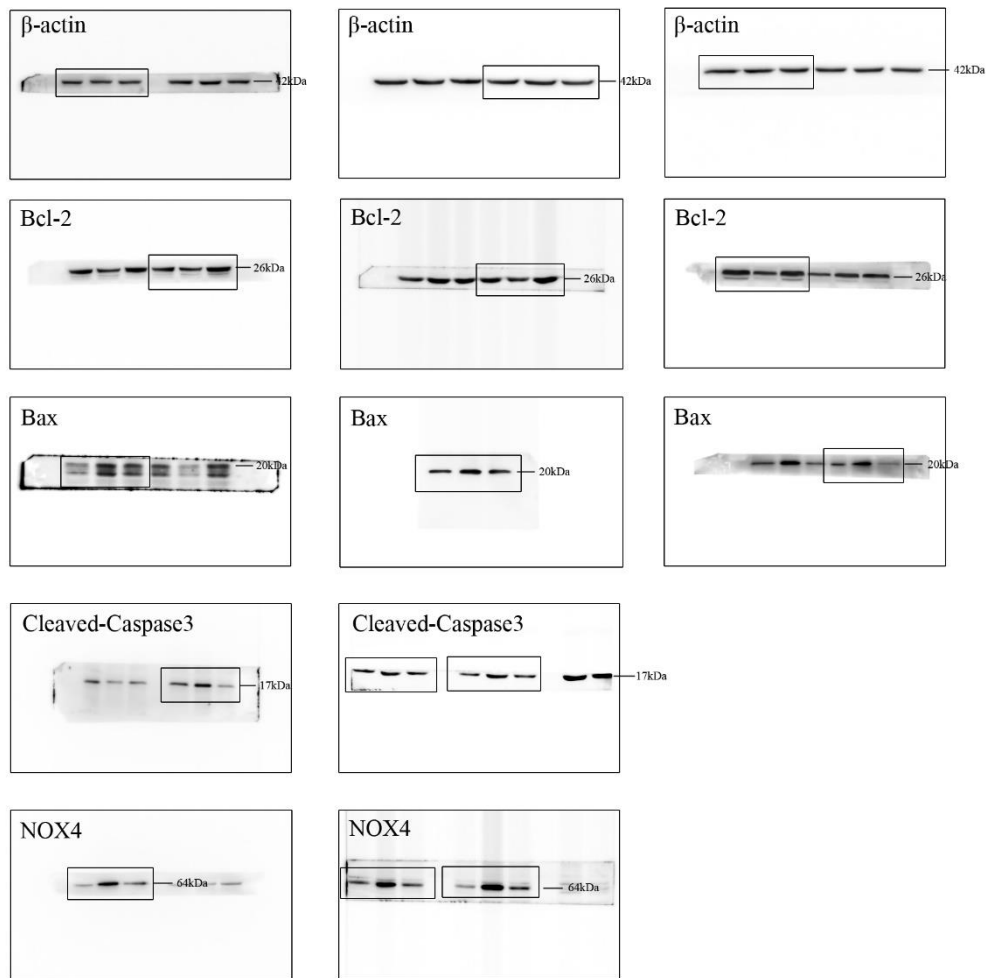
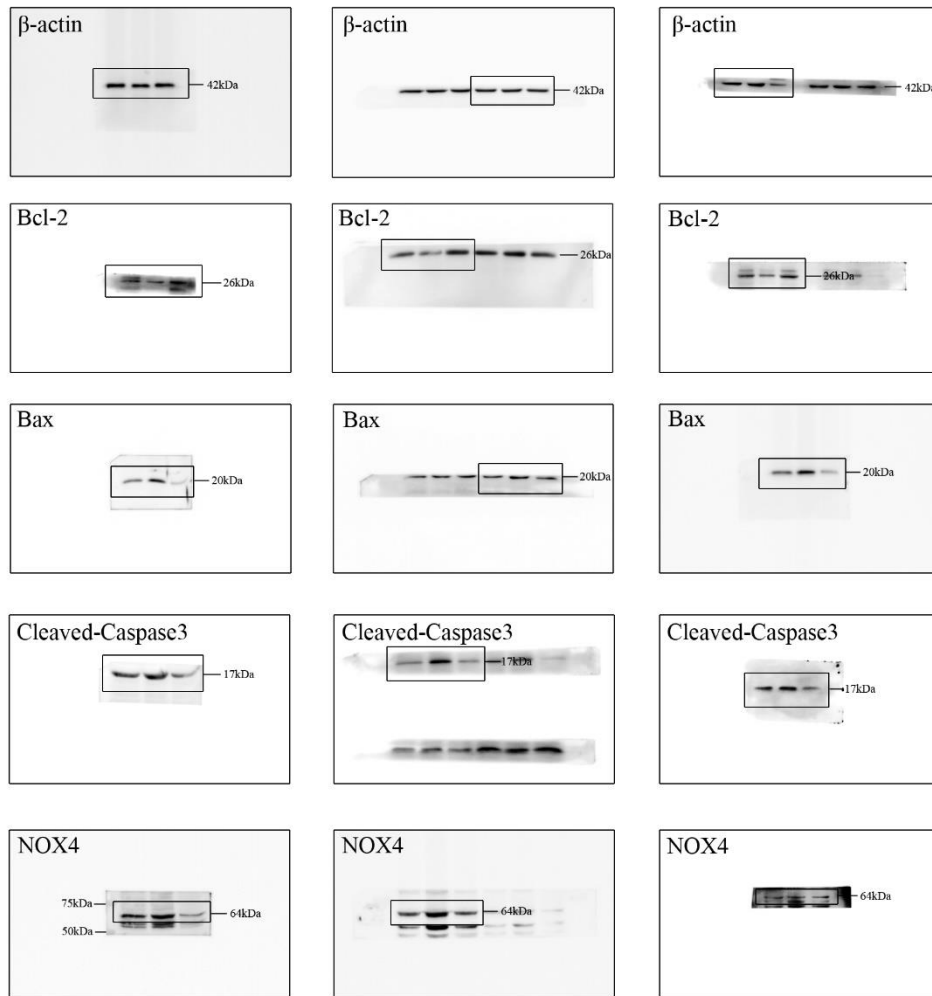


Figure. 5. D



# Statistic report:

## Figure 1C

GraphPad Prism 7.00 - [Object in 统计图]

	Group A	Group B	Group C	Group D	Group E	Group F	Group G	Group H	Group I	Group J	Group K	Group L
control	NTDs	Title	Title	Title	Title	Title	Title	Title	Title	Title	Title	Title
	Y	Y	Y	Y	Y	Y	Y	Y	Y	Y	Y	Y
1	0.840034	0.588234										
2	1.079515	0.484136										
3	1.184461	0.941442										
4	1.201520	0.783996										
5	0.694468	0.502588										
6												
7												
8												
9												
10												
11												
12												
13												
14												
15												
16												
17												
18												
19												
20												
21												
22												

GraphPad Prism 7.00 - [Object in 统计图]

	A	B	C	D	E	F	G	H	I
Col. stats	Data Set-A	Data Set-B	Title	Title	Title	Title	Title	Title	Title
	Y	Y	Y	Y	Y	Y	Y	Y	Y
5 Median	1.08	0.5882							
6 75% Percentile	1.193	0.8627							
7 Maximum	1.202	0.9414							
8									
9 Mean	1	0.6601							
10 Std. Deviation	0.2235	0.1971							
11 Std. Error of Mean	0.09997	0.08816							
12									
13 Lower 95% CI of mean	0.7224	0.4153							
14 Upper 95% CI of mean	1.278	0.9048							
15									
16 Sum	5	3.3							
17									
18 Shapiro-Wilk normality test									
19 W	0.883	0.8896							
20 P value	0.3233	0.3552							
21 Passed normality test (alpha=0.05)?	Yes	Yes							
22 P value summary	ns	ns							
23									
24									
25									
26									
27									

GraphPad Prism 7.00 - [Object in 统计图]

7 Unpaired t test		
8 P value	0.0342	
9 P value summary	*	
10 Significantly different (P < 0.05)?	Yes	
11 One- or two-tailed P value?	Two-tailed	
12 t, df	t=2.55 df=8	
13		
14 How big is the difference?		
15 Mean ± SEM of column A	1 ± 0.09997, n=5	
16 Mean ± SEM of column B	0.6601 ± 0.08816, n=5	
17 Difference between means	-0.3399 ± 0.1333	
18 95% confidence interval	-0.6473 to -0.03255	
19 R squared (eta squared)	0.4484	
20		
21 F test to compare variances		
22 F, DFn, Dfd	1.286, 4, 4	
23 P value	0.8133	
24 P value summary	ns	
25 Significantly different (P < 0.05)?	No	
26		
27		

Figure 1D

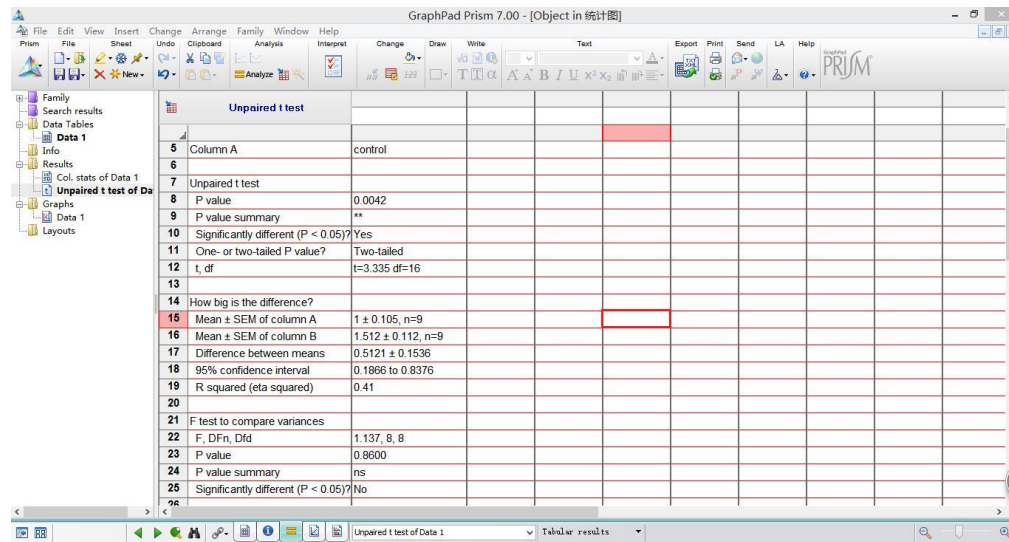
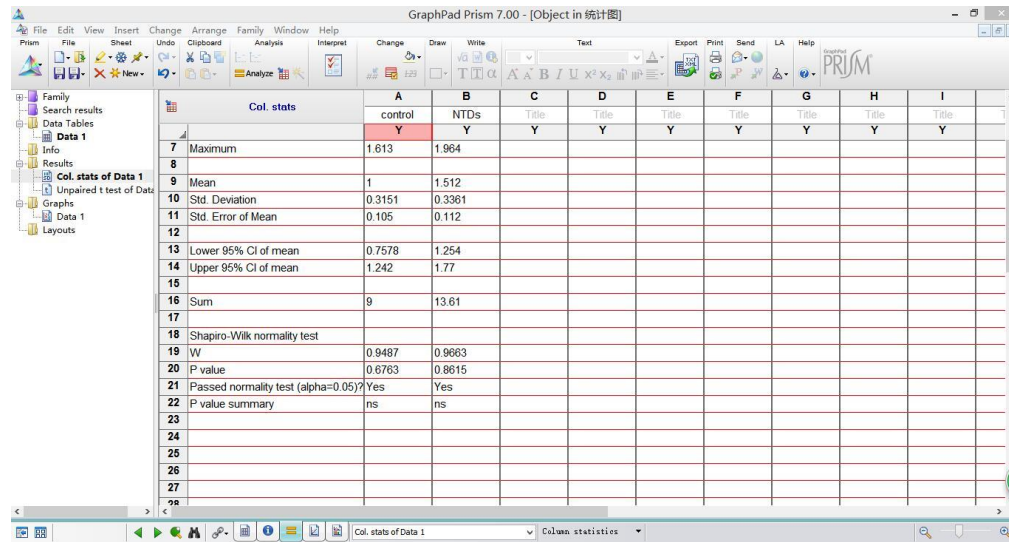
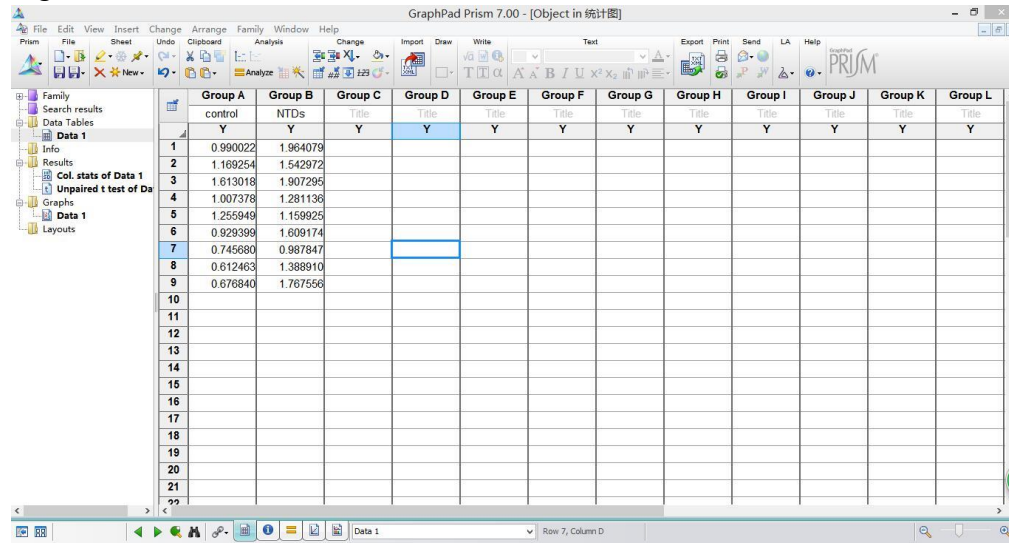


Figure 1E

GraphPad Prism 7.00 - [Project1:Data 1]

	Group A	Group B	Group C	Group D	Group E	Group F	Group G	Group H	Group I	Group J	Group K	Group L
	control	NTDs	Title	Title	Title	Title	Title	Title	Title	Title	Title	Title
1	Y	Y	Y	Y	Y	Y	Y	Y	Y	Y	Y	Y
2												
3												
4												
5												
6												
7												
8												
9												
10												
11												
12												
13												
14												
15												
16												
17												
18												
19												
20												
21												
22												

GraphPad Prism 7.00 - [Project1:Col. stats of Data 1]

Col. stats	A	B	C	D	E	F	G	H	I
	control	NTDs	Title	Title	Title	Title	Title	Title	Title
4	Y	Y	Y	Y	Y	Y	Y	Y	Y
5	25% Percentile	1.75	3						
6	Median	2.5	4						
7	75% Percentile	3	4.5						
8	Maximum	4	6						
9	Mean	2.4	4						
10	Std. Deviation	0.9661	1.247						
11	Std. Error of Mean	0.3055	0.3944						
12									
13	Lower 95% CI of mean	1.709	3.108						
14	Upper 95% CI of mean	3.081	4.892						
15									
16	Sum	24	40						
17									
18	Shapiro-Wilk normality test								
19	W	0.9044	0.8731						
20	P value	0.2449	0.1085						
21	Passed normality test (alpha=0.05)?	Yes	Yes						
22	P value summary	ns	ns						
23									
24									

GraphPad Prism 7.00 - [Project1:Unpaired t test of Data 1]

Unpaired t test			
5	Column A	control	
6			
7	Unpaired t test		
8	P value	0.0049	
9	P value summary	**	
10	Significantly different (P < 0.05)?	Yes	
11	One- or two-tailed P value?	Two-tailed	
12	t, df	t=3.207 df=18	
13			
14	How big is the difference?		
15	Mean ± SEM of column A	2.4 ± 0.3055, n=10	
16	Mean ± SEM of column B	4 ± 0.3944, n=10	
17	Difference between means	1.6 ± 0.4989	
18	95% confidence interval	0.5519 to 2.648	
19	R squared (eta squared)	0.3636	
20			
21	F test to compare variances		
22	F, DFn, Dfd	1.667, 9, 9	
23	P value	0.4584	
24	P value summary	ns	
25	Significantly different (P < 0.05)?	No	

Figure 1F

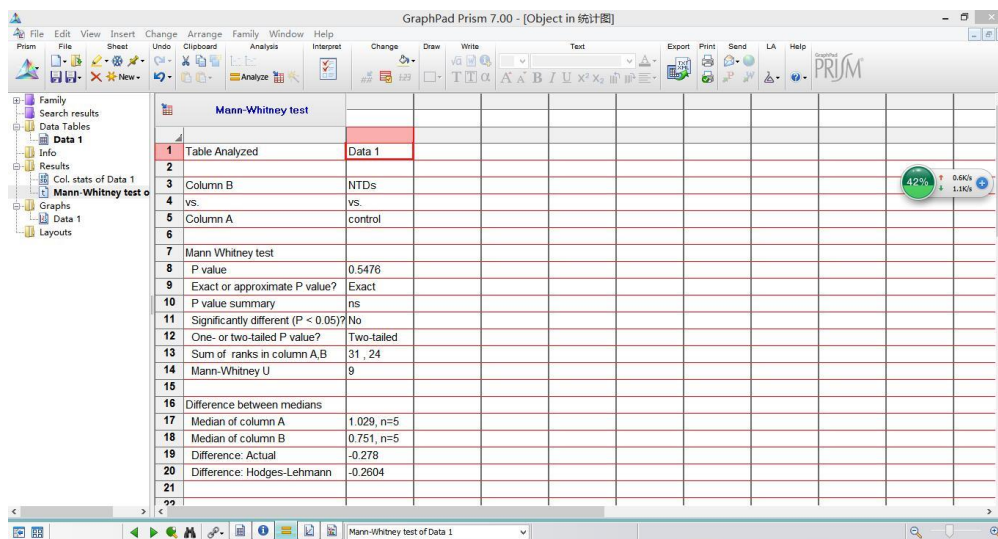
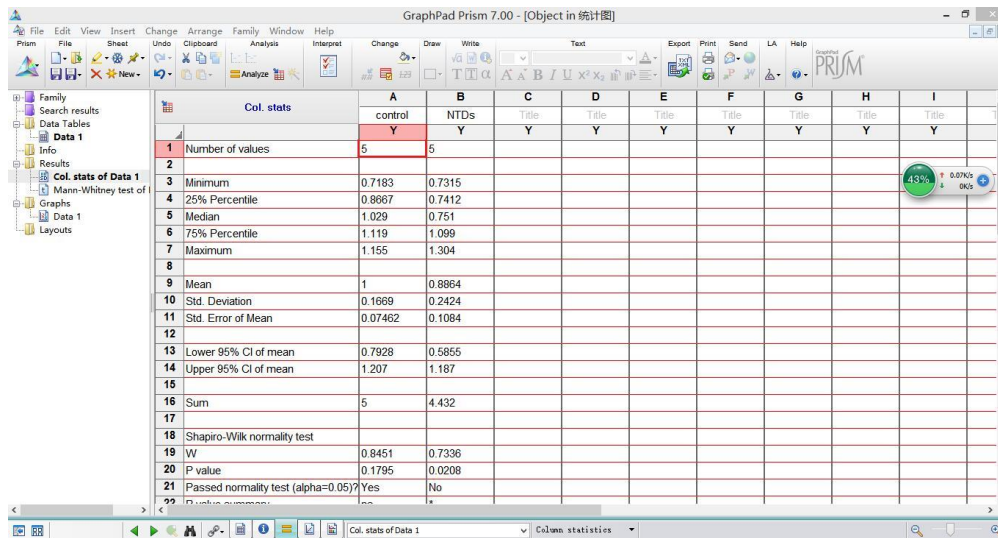
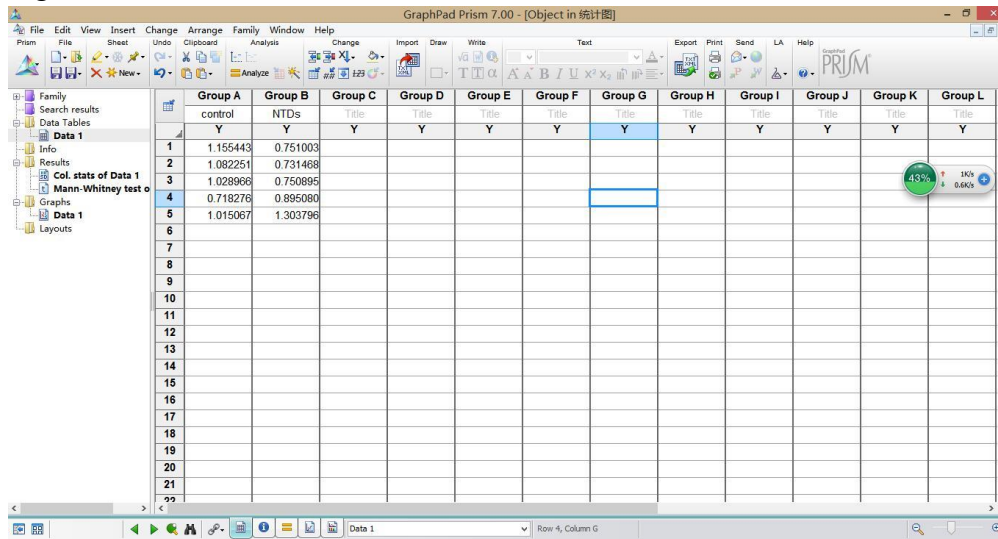




Figure 1G  
Relative fluorescence intensity:

GraphPad Prism 7.00 - [Object in 统计图]

	Group A	Group B	Group C	Group D	Group E	Group F	Group G	Group H	Group I	Group J	Group K	Group L
	control	NTDs	Title	Title	Title	Title	Title	Title	Title	Title	Title	Title
1	Y	Y	Y	Y	Y	Y	Y	Y	Y	Y	Y	Y
2	1.002426	1.718315										
3	1.024257	2.300486										
4	0.973317	2.093997										
5												
6												
7												
8												
9												
10												
11												
12												
13												
14												
15												
16												
17												
18												
19												
20												
21												
22												

GraphPad Prism 7.00 - [Object in 统计图]

Col. stats	A	B	C	D	E	F	G	H	I
	control	NTDs	Title	Title	Title	Title	Title	Title	Title
2	Y	Y	Y	Y	Y	Y	Y	Y	Y
3	Minimum	0.9733	1.718						
4	25% Percentile	0.9733	1.718						
5	Median	1.002	2.094						
6	75% Percentile	1.024	2.3						
7	Maximum	1.024	2.3						
8									
9	Mean	1	2.038						
10	Std. Deviation	0.02556	0.2952						
11	Std. Error of Mean	0.01476	0.1704						
12									
13	Lower 95% CI of mean	0.9365	1.304						
14	Upper 95% CI of mean	1.063	2.771						
15									
16	Sum	3	6.113						
17									
18	Shapiro-Wilk normality test								
19	W	0.9932	0.9726						
20	P value	0.8428	0.6825						
21	Passed normality test (alpha=0.05)?	Yes	Yes						
22	P value summary	ns	ns						

GraphPad Prism 7.00 - [Object in 统计图]

Welch's t test	
6	
7	Unpaired t test with Welch's correction
8	P value
9	P value summary
10	Significantly different (P < 0.05)?
11	One- or two-tailed P value?
12	Welch-corrected t, df
13	
14	How big is the difference?
15	Mean ± SEM of column A
16	Mean ± SEM of column B
17	Difference between means
18	95% confidence interval
19	R squared (eta squared)
20	
21	F test to compare variances
22	F, DFn, Dfd
23	P value
24	P value summary
25	Significantly different (P < 0.05)?
26	



# TUNEL signal

GraphPad Prism 7.00 - [Object in 统计图]

	Group A	Group B	Group C	Group D	Group E	Group F	Group G	Group H	Group I	Group J	Group K	Group L
	control	NTDs	Title	Title	Title	Title	Title	Title	Title	Title	Title	Title
1	Y	Y	Y	Y	Y	Y	Y	Y	Y	Y	Y	Y
2	3.921	38.793										
3	4.827	33.333										
4	1.724	28.880										
5												
6												
7												
8												
9												
10												
11												
12												
13												
14												
15												
16												
17												
18												
19												
20												
21												
22												

Row 9, Column F

GraphPad Prism 7.00 - [Object in 统计图]

	Col. stats	A	B	C	D	E	F	G	H	I
		control	NTDs	Title	Title	Title	Title	Title	Title	Title
2		Y	Y	Y	Y	Y	Y	Y	Y	Y
3	Minimum	1.724	28.88							
4	25% Percentile	1.724	28.88							
5	Median	3.921	33.33							
6	75% Percentile	4.827	38.79							
7	Maximum	4.827	38.79							
8										
9	Mean	3.491	33.67							
10	Std. Deviation	1.596	4.965							
11	Std. Error of Mean	0.9212	2.867							
12										
13	Lower 95% CI of mean	-0.4731	21.33							
14	Upper 95% CI of mean	7.454	46							
15										
16	Sum	10.47	101							
17										
18	Shapiro-Wilk normality test									
19	W	0.9454	0.9966							
20	P value	0.5498	0.8881							
21	Passed normality test (alpha=0.05)?	Yes	Yes							
22	P value summary	ns	ns							

Col. stats of Data 1

GraphPad Prism 7.00 - [Object in 统计图]

	Unpaired t test									
7	Unpaired t test									
8	P value	0.0006								
9	P value summary	***								
10	Significantly different (P < 0.05)?	Yes								
11	One- or two-tailed P value?	Two-tailed								
12	t, df	t=10.02 df=4								
13										
14	How big is the difference?									
15	Mean ± SEM of column A	3.491 ± 0.9212, n=3								
16	Mean ± SEM of column B	33.67 ± 2.867, n=3								
17	Difference between means	30.18 ± 3.011								
18	95% confidence interval	21.82 to 38.54								
19	R squared (eta squared)	0.9617								
20										
21	F test to compare variances									
22	F, DFn, Dfd	9.682, 2, 2								
23	P value	0.1872								
24	P value summary	ns								
25	Significantly different (P < 0.05)?	No								
26										
27										
28										

Unpaired t test of Data 1

Tabular results

Figure 2B

GraphPad Prism 7.00 - [Project:Data 1]

	Group A	Group B	Group C	Group D	Group E	Group F	Group G	Group H	Group I	Group J	Group K	Group L
	Bio-con	Bio-miR-322										
	Y	Y	Y	Y	Y	Y	Y	Y	Y	Y	Y	Y
1	1.000000	211.3868										
2	0.915650	205.8429										
3	0.934827	188.4187										
4												
5												
6												
7												
8												
9												
10												
11												
12												
13												
14												
15												
16												
17												
18												
19												
20												
21												
22												

GraphPad Prism 7.00 - [Project:Col. stats of Data 1]

Col. stats	A	B	C	D	E	F	G	H	I
	Bio-con	Bio-miR-322							
	Y	Y	Y	Y	Y	Y	Y	Y	Y
7 Maximum	1	211.4							
8 Mean	0.9502	201.9							
9 Std. Deviation	0.04422	11.99							
10 Std. Error of Mean	0.02553	6.92							
11 Lower 95% CI of mean	0.8403	172.1							
12 Upper 95% CI of mean	1.06	231.7							
13 Sum	2.85	605.6							
14 Shapiro-Wilk normality test									
15 W	0.9098	0.9181							
16 P value	0.4175	0.4457							
17 Passed normality test (alpha=0.05)?	Yes	Yes							
18 P value summary	ns	ns							

GraphPad Prism 7.00 - [Object in 统计图]

Welch's t test	
7 Unpaired t test with Welch's correction	
8 P value	0.0012
9 P value summary	**
10 Significantly different (P < 0.05)?	Yes
11 One- or two-tailed P value?	Two-tailed
12 Welch-corrected t, df	t=29.04 df=2
13	
14 How big is the difference?	
15 Mean ± SEM of column A	0.9502 ± 0.02553, n=3
16 Mean ± SEM of column B	201.9 ± 6.92, n=3
17 Difference between means	200.9 ± 6.92
18 95% confidence interval	171.2 to 230.7
19 R squared (eta squared)	0.9976
20	
21 F test to compare variances	
22 F, DFn, Dfd	73475, 2, 2
23 P value	<0.0001
24 P value summary	****
25 Significantly different (P < 0.05)?	Yes

Figure 2C

GraphPad Prism 7.00 - [Object in 统计图]

	Group A	Group B	Group C	Group D	Group E	Group F	Group G	Group H	Group I	Group J	Group K	Group L
1	1.000000	0.958027		Y	Y	Y	Y	Y	Y	Y	Y	Y
2	0.997562	1.055409										
3	0.987160	1.159709										
4												
5												
6												
7												
8												
9												
10												
11												
12												
13												
14												
15												
16												
17												
18												
19												
20												
21												
22												

Unpaired t test data Row 7, Column D

GraphPad Prism 7.00 - [Object in 统计图]

	Col. stats	A	B	C	D	E	F	G	H	I
7	Maximum	1	1.16							
9	Mean	0.9949	1.058							
10	Std. Deviation	0.006819	0.1009							
11	Std. Error of Mean	0.003937	0.05823							
13	Lower 95% CI of mean	0.978	0.8072							
14	Upper 95% CI of mean	1.012	1.308							
16	Sum	2.985	3.173							
18	Shapiro-Wilk normality test									
19	W	0.8863	0.9996							
20	P value	0.3432	0.9622							
21	Passed normality test (alpha=0.05)?	Yes	Yes							
22	P value summary	ns	ns							

Col. stats of Unpaired t test data Column: statistics

GraphPad Prism 7.00 - [Object in 统计图]

	Welch's t test	
6		
7	Unpaired t test with Welch's correction	
8	P value	0.3936
9	P value summary	ns
10	Significantly different (P < 0.05)?	No
11	One- or two-tailed P value?	Two-tailed
12	Welch-corrected t, df	t=1.076 df=2.018
14	How big is the difference?	
15	Mean ± SEM of column A	0.9949 ± 0.003937, n=3
16	Mean ± SEM of column B	1.058 ± 0.05823, n=3
17	Difference between means	0.06281 ± 0.05836
18	95% confidence interval	-0.1861 to 0.3118
19	R squared (eta squared)	0.3646
21	F test to compare variances	
22	F, DFn, Dfd	218.8, 2, 2
23	P value	0.0091
24	P value summary	***
25	Significantly different (P < 0.05)?	Yes

Welch's t test of Unpaired t test data Tabular results

Figure 2D

GraphPad Prism 7.00 - [Object in 统计图]

	Group A	Group B	Group C	Group D	Group E	Group F	Group G	Group H	Group I	Group J	Group K	Group L
	Bio-con	Bio-miR-322	Title	Title	Title	Title	Title	Title	Title	Title	Title	Title
	Y	Y	Y	Y	Y	Y	Y	Y	Y	Y	Y	Y
1	1.000000	16.73243										
2	0.997710	16.92951										
3	1.024278	16.77110										
4												
5												
6												
7												
8												
9												
10												
11												
12												
13												
14												
15												
16												
17												
18												
19												
20												
21												
22												

Unpaired t test data

GraphPad Prism 7.00 - [Object in 统计图]

	A	B	C	D	E	F	G	H	I
	Bio-con	Bio-miR-322	Title	Title	Title	Title	Title	Title	Title
	Y	Y	Y	Y	Y	Y	Y	Y	Y
1	Number of values	3	3						
2									
3	Minimum	0.9977	16.73						
4	25% Percentile	0.9977	16.73						
5	Median	1	16.77						
6	75% Percentile	1.024	16.93						
7	Maximum	1.024	16.93						
8									
9	Mean	1.007	16.81						
10	Std. Deviation	0.01472	0.1044						
11	Std. Error of Mean	0.0085	0.06029						
12									
13	Lower 95% CI of mean	0.9708	16.55						
14	Upper 95% CI of mean	1.044	17.07						
15									
16	Sum	3.022	50.43						
17									
18	Shapiro-Wilk normality test								
19	W	0.8141	0.8904						
20	P value	0.1487	0.3557						
21	Passed normality test (alpha=0.05)?	Yes	Yes						
22									

Col. stats of Unpaired t test data

GraphPad Prism 7.00 - [Object in 统计图]

	A	B	C	D	E	F	G	H	I
	Bio-con	Bio-miR-322	Title	Title	Title	Title	Title	Title	Title
	Y	Y	Y	Y	Y	Y	Y	Y	Y
6									
7	Unpaired t test with Welch's correction								
8	P value	<0.0001							
9	P value summary	****							
10	Significantly different (P < 0.05)?	Yes							
11	One- or two-tailed P value?	Two-tailed							
12	Welch-corrected t, df	t=259.6 df=2.079							
13									
14	How big is the difference?								
15	Mean ± SEM of column A	1.007 ± 0.0085, n=3							
16	Mean ± SEM of column B	16.81 ± 0.06029, n=3							
17	Difference between means	15.8 ± 0.06089							
18	95% confidence interval	15.55 to 16.06							
19	R squared (eta squared)	1							
20									
21	F test to compare variances								
22	F, DFn, Dfd	50.31, 2, 2							
23	P value	0.0390							
24	P value summary	*							
25	Significantly different (P < 0.05)?	Yes							
26									

Welch's t test of Unpaired t test data





Figure 3A

GraphPad Prism 7.00 - [Project:Data 2]

Table format		Group A			Group B			Group C			Group D	
id	ix	Mean	SD	N	Mean	SD	N	Mean	SD	N	Mean	SD
1		100.00270	4.858892	3	99.97858	11.554890	3					
2		100.00090	11.604810	3	45.00311	6.208022	3					
3		99.99865	7.564849	3	54.08364	7.627031	3					
4		99.99759	14.259430	3	101.90600	10.923980	3					
5												
6												
7												
8												
9												
10												
11												
12												
13												
14												
15												
16												
17												
18												
19												
20												
21												
22												

GraphPad Prism 7.00 - [Project:Unpaired t test of Data 1]

Unpaired t test				
7	Unpaired t test			
8	P value	0.9975		
9	P value summary	ns		
10	Significantly different (P < 0.05)?	No		
11	One- or two-tailed P value?	Two-tailed		
12	t, df	t=0.003333 df=4		
13				
14	How big is the difference?			
15	Mean ± SEM of column A	99.98 ± 6.671, n=3		
16	Mean ± SEM of column B	100 ± 2.805, n=3		
17	Difference between means	0.02412 ± 7.237		
18	95% confidence interval	-20.07 to 20.12		
19	R squared (eta squared)	2.777e-006		
20				
21	F test to compare variances			
22	F, DFn, Dfd	5.655, 2, 2		
23	P value	0.3005		
24	P value summary	ns		
25	Significantly different (P < 0.05)?	No		
26				
27				
28				

GraphPad Prism 7.00 - [Project:Unpaired t test of Data 1]

Unpaired t test				
7	Unpaired t test			
8	P value	0.0019		
9	P value summary	***		
10	Significantly different (P < 0.05)?	Yes		
11	One- or two-tailed P value?	Two-tailed		
12	t, df	t=7.238 df=4		
13				
14	How big is the difference?			
15	Mean ± SEM of column A	45 ± 3.684, n=3		
16	Mean ± SEM of column B	100 ± 6.7, n=3		
17	Difference between means	55 ± 7.598		
18	95% confidence interval	33.9 to 76.09		
19	R squared (eta squared)	0.9291		
20				
21	F test to compare variances			
22	F, DFn, Dfd	3.494, 2, 2		
23	P value	0.4450		
24	P value summary	ns		
25	Significantly different (P < 0.05)?	No		
26				
27				
28				

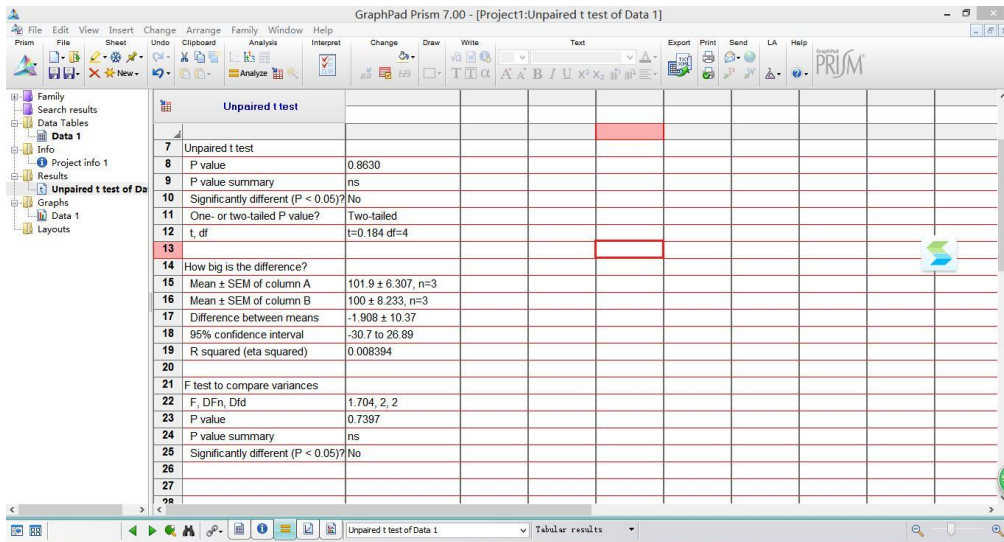
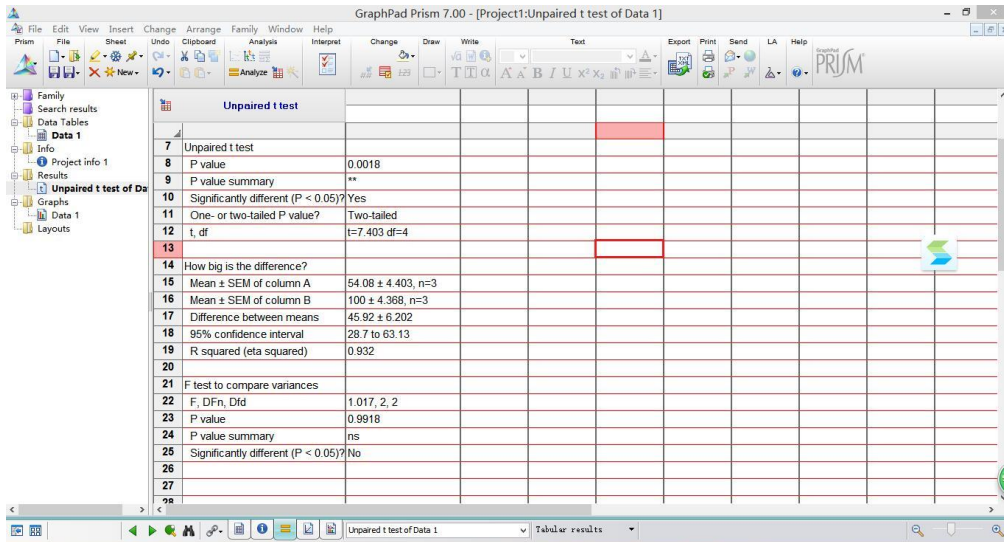


Figure 3B

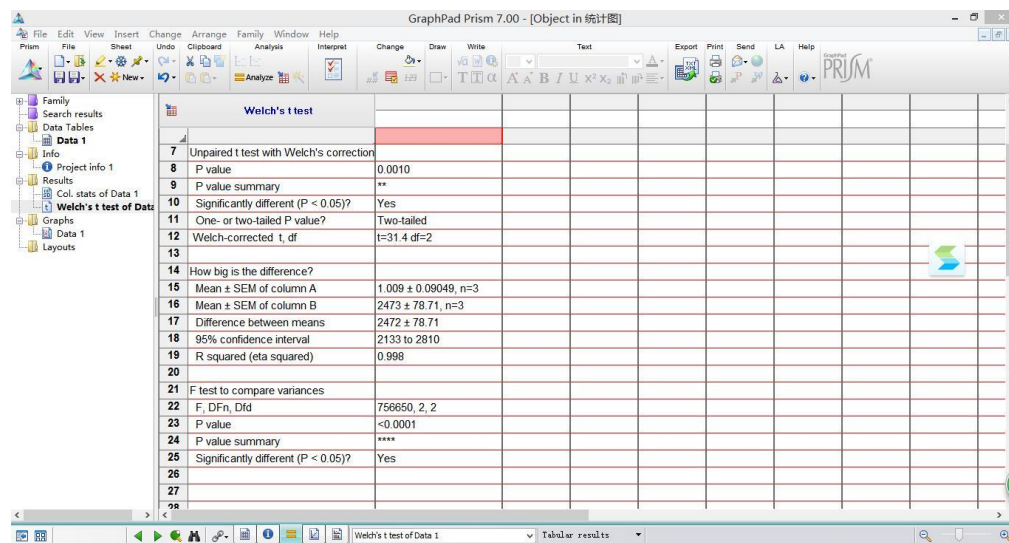
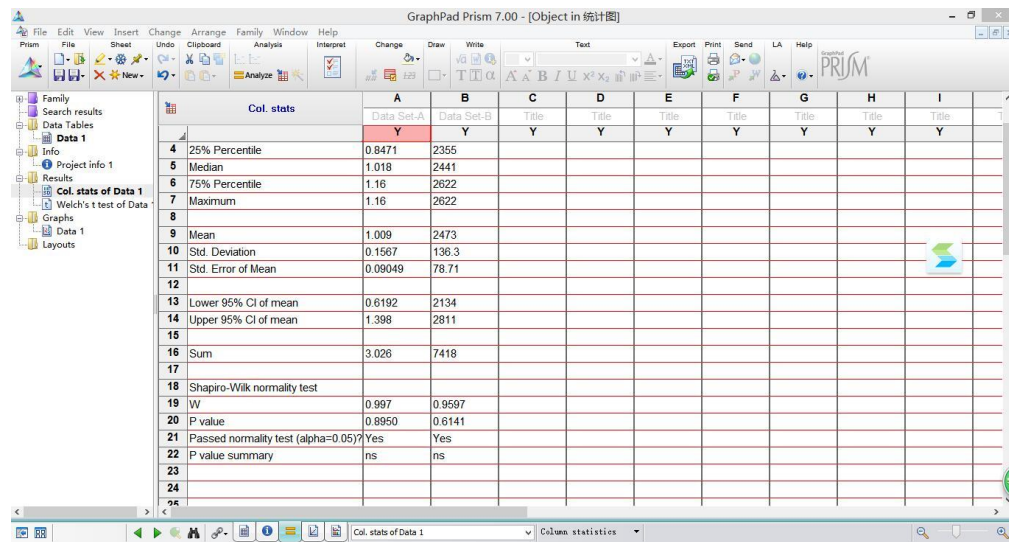
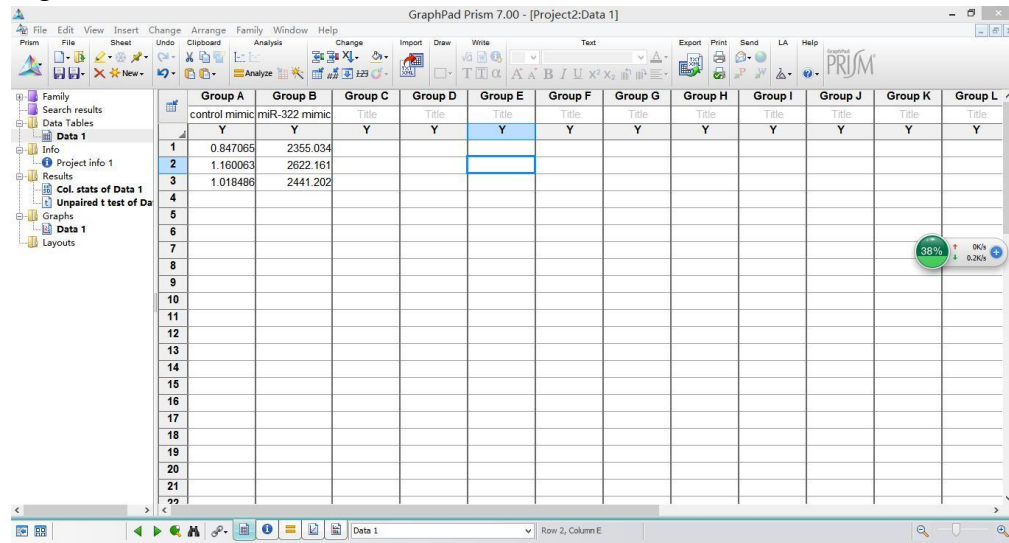




Figure 3C

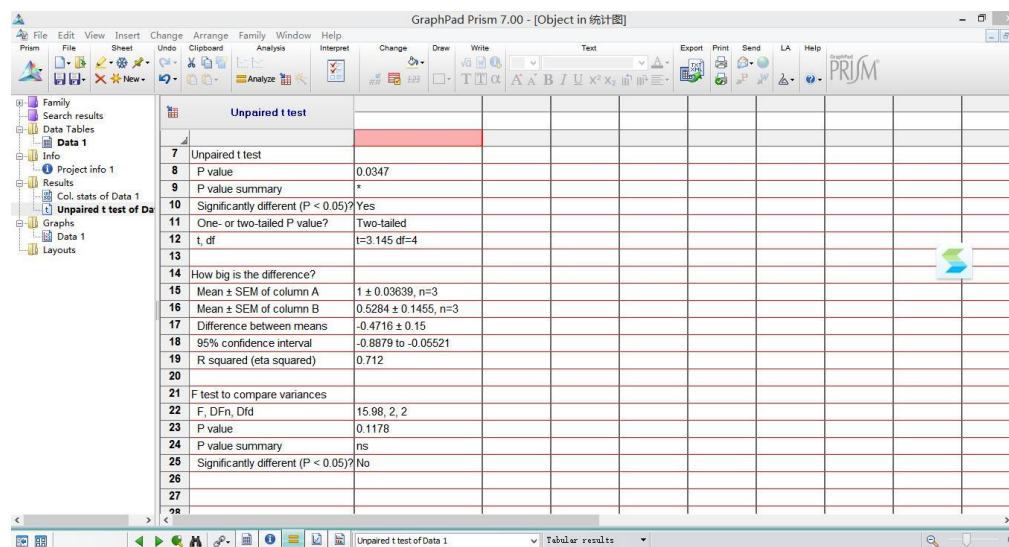
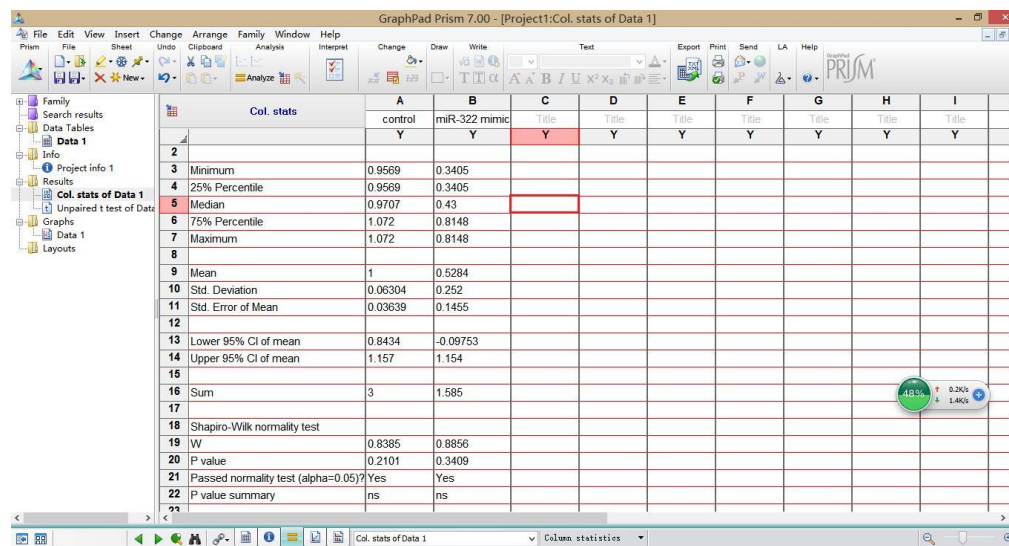
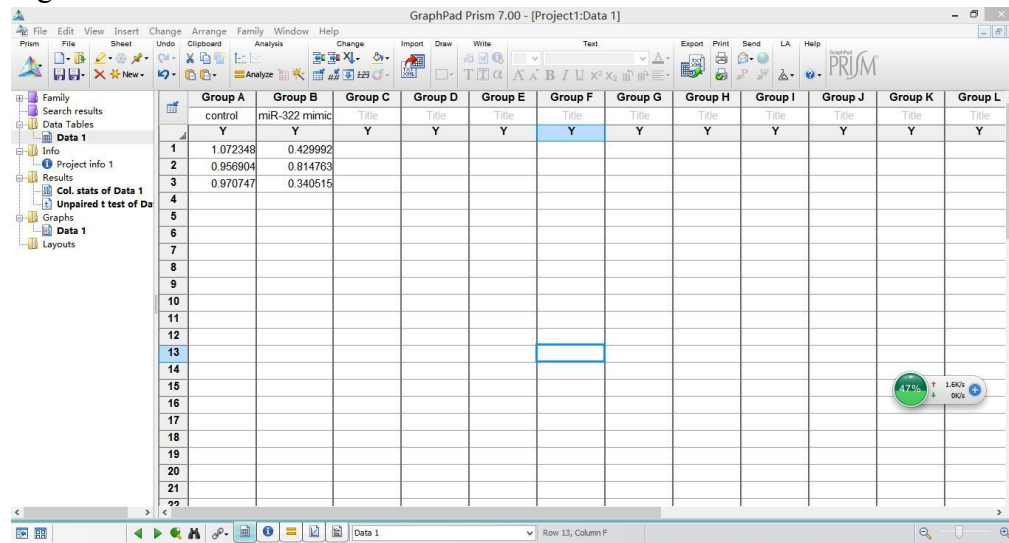


Figure 3D

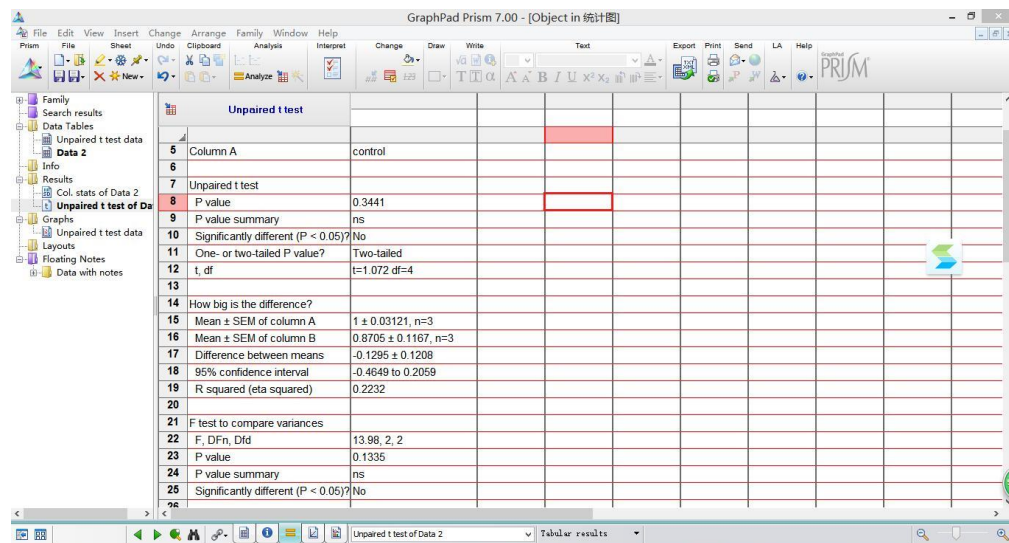
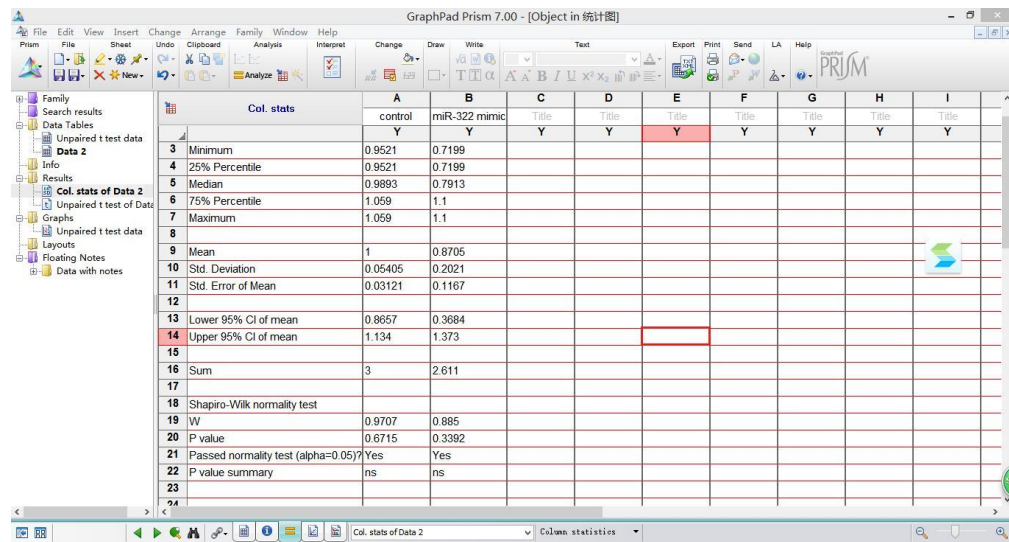
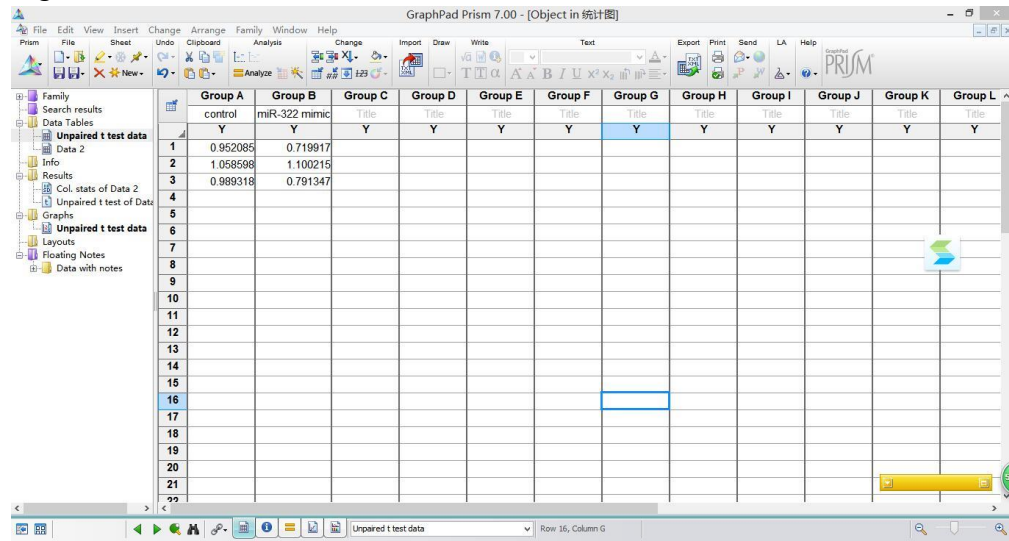


Figure 3E

GraphPad Prism 7.00 - [Object in 论文图片]

	Group A	Group B	Group C	Group D	Group E	Group F	Group G	Group H	Group I	Group J	Group K	Group L
	control	miR-322 inhibitor	Title	Title	Title	Title	Title	Title	Title	Title	Title	Title
1	Y	Y	Y	Y	Y	Y	Y	Y	Y	Y	Y	Y
2	0.981397	0.067870										
3	1.086780	0.069587										
4	0.937776	0.047840										
5												
6												
7												
8												
9												
10												
11												
12												
13												
14												
15												
16												
17												
18												
19												
20												
21												
22												

Row 10, A1: control

GraphPad Prism 7.00 - [Object in 论文图片]

Col. stats	A	B	C	D	E	F	G	H	I
	control	miR-322 inhibitor	Title	Title	Title	Title	Title	Title	Title
2	Y	Y	Y	Y	Y	Y	Y	Y	Y
3	Minimum	0.9378	0.04784						
4	25% Percentile	0.9378	0.04784						
5	Median	0.9814	0.06787						
6	75% Percentile	1.087	0.06959						
7	Maximum	1.087	0.06959						
8									
9	Mean	1.002	0.06177						
10	Std. Deviation	0.07661	0.01209						
11	Std. Error of Mean	0.04423	0.00698						
12									
13	Lower 95% CI of mean	0.8117	0.03173						
14	Upper 95% CI of mean	1.192	0.0918						
15									
16	Sum	3.006	0.1853						
17									
18	Shapiro-Wilk normality test								
19	W	0.9458	0.8088						
20	P value	0.5514	0.1357						
21	Passed normality test (alpha=0.05)?	Yes	Yes						
22	P value summary	ns	ns						

Col. stats of Data 2

GraphPad Prism 7.00 - [Object in 统计图]

Welch's t test	
7	Unpaired t test with Welch's correction
8	P value
9	P value summary
10	Significantly different (P < 0.05)?
11	One- or two-tailed P value?
12	Welch-corrected t, df
13	
14	How big is the difference?
15	Mean ± SEM of column A
16	Mean ± SEM of column B
17	Difference between means
18	95% confidence interval
19	R squared (eta squared)
20	
21	F test to compare variances
22	F, DFn, Dfd
23	P value
24	P value summary
25	Significantly different (P < 0.05)?
26	
27	
28	

Welch's t test of Data 2

Figure 3F

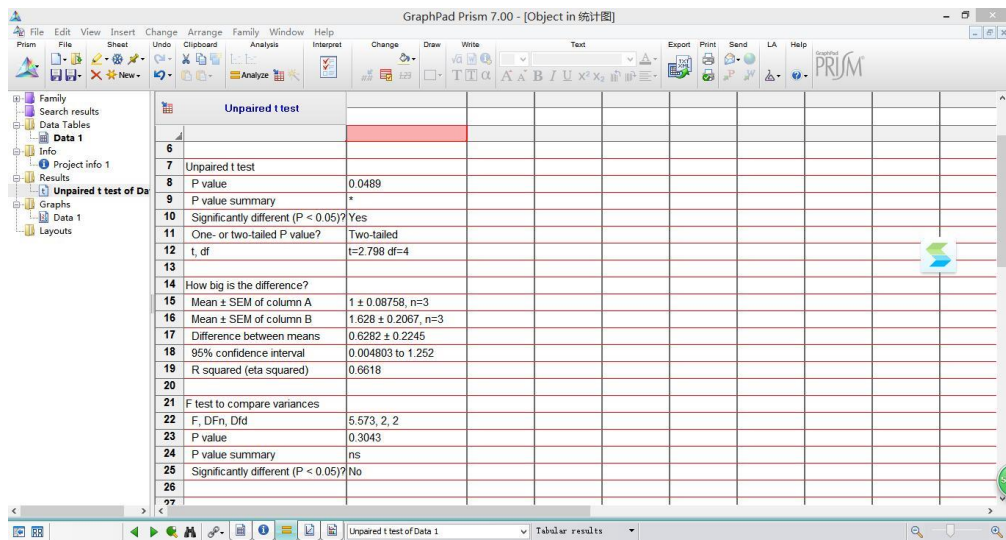
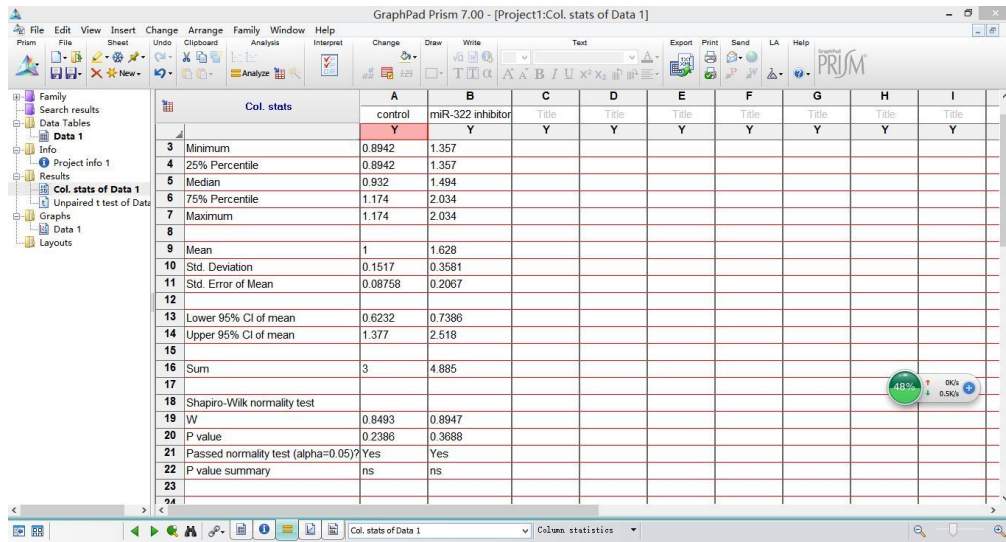
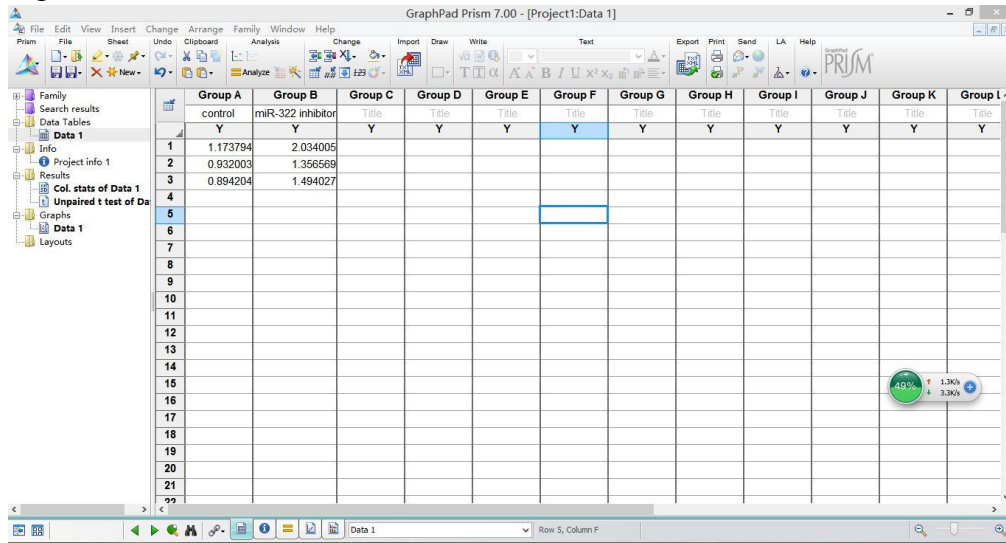




Figure 3G

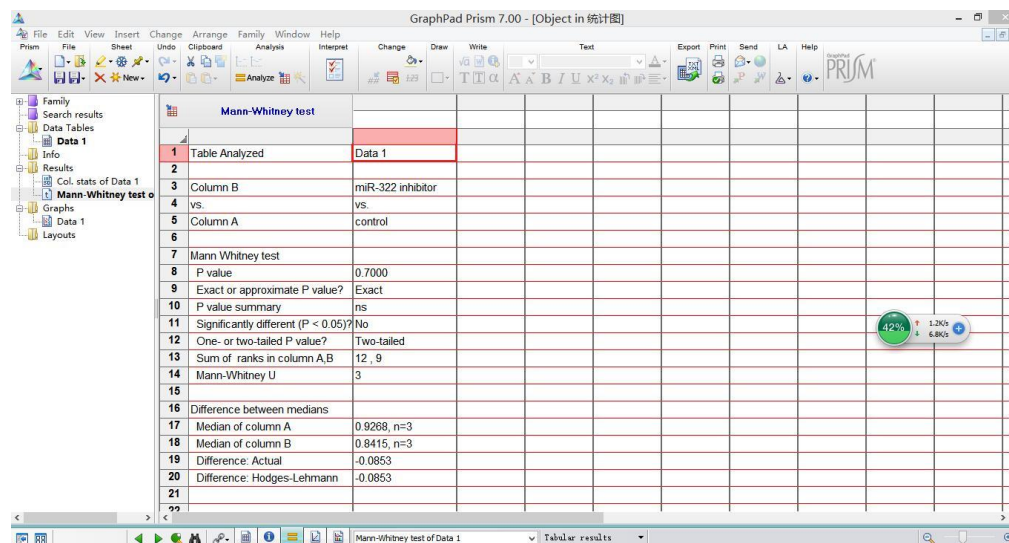
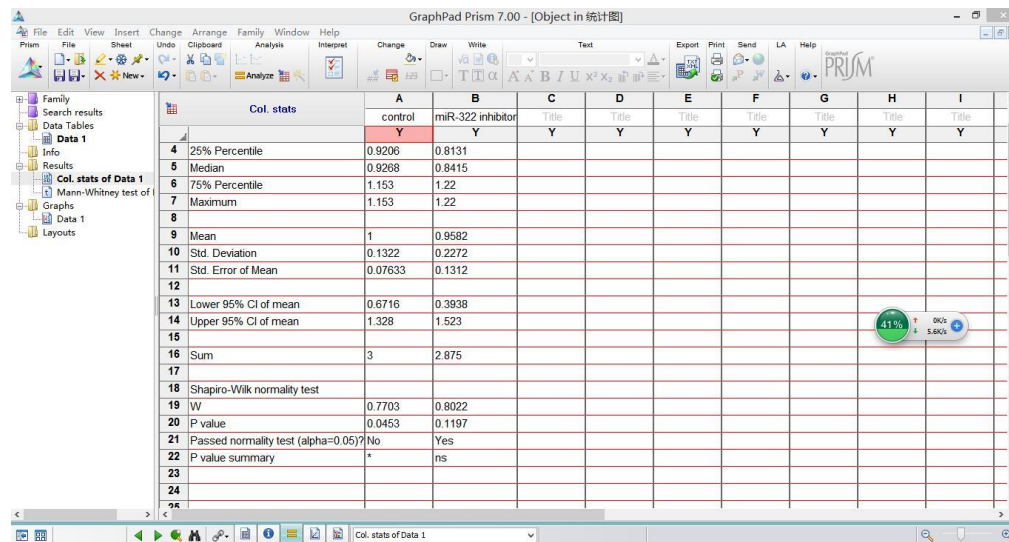
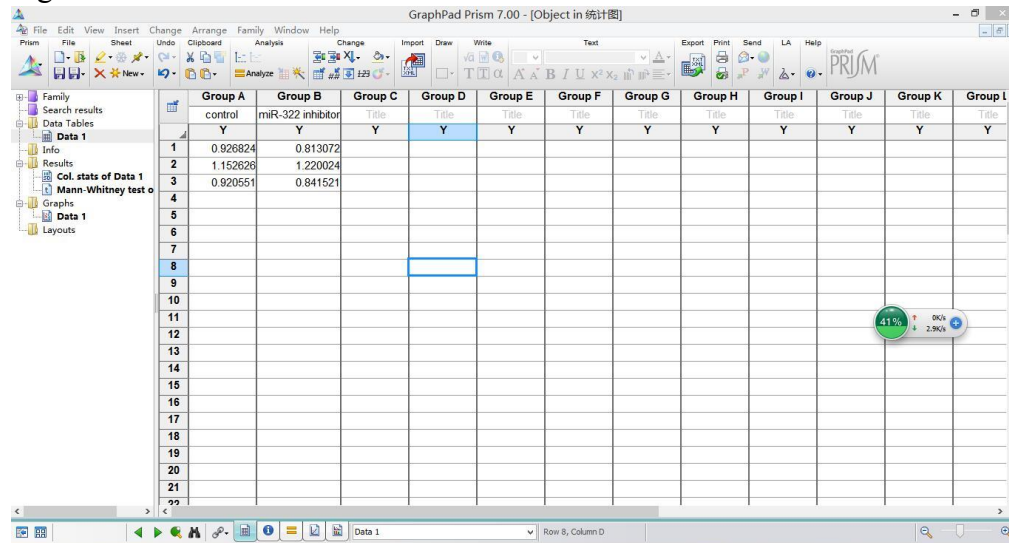


Figure 4A (NOX4)

GraphPad Prism 7.00 - [Project1:Data 1]

	Group A	Group B	Group C	Group D	Group E	Group F	Group G	Group H	Group I	Group J	Group K	Group L
1	shcontrol	shNOX4 1#	shNOx4 2#	Title	Title	Title	Title	Title	Title	Title	Title	Title
2	Y	Y	Y	Y	Y	Y	Y	Y	Y	Y	Y	Y
1	1.085402	1.034981	0.480254									
2	1.003177	0.813072	0.521003									
3	0.911422	0.624698	0.327203									
4												
5												
6												
7												
8												
9												
10												
11												
12												
13												
14												
15												
16												
17												
18												
19												
20												
21												
22												

GraphPad Prism 7.00 - [Project1:Col. stats of Data 1]

	A	B	C	D	E	F	G	H	I
7	shcontrol	shNOX4 1#	shNOx4 2#	Title	Title	Title	Title	Title	Title
8	Y	Y	Y	Y	Y	Y	Y	Y	Y
7	Maximum	1.085	1.035	0.521					
9	Mean	1	0.8243	0.4428					
10	Std. Deviation	0.08703	0.2054	0.1022					
11	Std. Error of Mean	0.05025	0.1186	0.05699					
13	Lower 95% CI of mean	0.7838	0.3141	0.189					
14	Upper 95% CI of mean	1.216	1.334	0.6966					
16	Sum	3	2.473	1.328					
18	Shapiro-Wilk normality test								
19	W	0.999	0.9978	0.8993					
20	P value	0.9396	0.9099	0.3834					
21	Passed normality test (alpha=0.05)?	Yes	Yes	Yes					
22	P value summary	ns	ns	ns					

GraphPad Prism 7.00 - [Project1:Ordinary one-way ANOVA of Data 1]

	A	B	C
1	shcontrol	shNOX4 1#	shNOx4 2#
2	Y	Y	Y
1	Table Analyzed	Data 1	
2	Data sets analyzed	A : shcontrol	B : shNOX4 1# C : shNOx4 2#
4	ANOVA summary		
5	F	12.13	
6	P value	0.0078	
7	P value summary	**	
8	Significant diff. among means (P < 0.05)?	Yes	
9	R square	0.8017	
11	Brown-Forsythe test		
12	F (DFn, DFd)	0.7427 (2, 6)	
13	P value	0.5150	
14	P value summary	ns	
15	Are SDs significantly different (P < 0.05)?	No	
17	Bartlett's test		
18	Bartlett's statistic (corrected)		
19	P value		
20	P value summary		
21	Are SDs significantly different (P < 0.05)?		

GraphPad Prism 7.00 - [Project1:Ordinary one-way ANOVA of Data 1]

File Edit View Insert Change Arrange Family Window Help

Prism File Sheet Undo Clipboard Analysis Interpret Change Draw Write Text Export Print Send LA Help

smly  
 search results  
 ata Tables  
 Data 1  
 do  
 Project info 1  
 results  
 Col. stats of Data 1  
 Ordinary one-way ANOVA of  
 ANOVA  
 Multiple comparisons  
 graphs  
 Data 1  
 layouts

1way ANOVA Multiple comparisons									
1	Number of families	1							
2	Number of comparisons per family	2							
3	Alpha	0.05							
4									
5	Dunnett's multiple comparisons test	Mean Diff.	95.00% CI of diff.	Significant?	Summary	Adjusted P Value	A-?		
6									
7	shcontrol vs. shNOx4 1#	0.1758	-0.1554 to 0.5069	No	ns	0.2911	B	shNOx4 1#	
8	shcontrol vs. shNOx4 2#	0.5572	0.2261 to 0.8883	Yes	**	0.0053	C	shNOx4 2#	
9									
10									
11	Test details	Mean 1	Mean 2	Mean Diff.	SE of diff.	n1	n2	q	DF
12									
13	shcontrol vs. shNOx4 1#	1	0.8243	0.1758	0.1157	3	3	1.52	6
14	shcontrol vs. shNOx4 2#	1	0.4428	0.5572	0.1157	3	3	4.818	6
15									
16									
17									
18									
19									
20									
21									
22									

Ordinary one-way ANOVA of Data 1 Multiple comparisons

Figure 4A (Cleaved Caspase-3)

GraphPad Prism 7.00 - [Project1:Data 1]

	Group A shcontrol	Group B shNOX4 1#	Group C shNOX4 2#	Group D Title	Group E Title	Group F Title	Group G Title	Group H Title	Group I Title	Group J Title	Group K Title	Group L Title
1	Y	Y	Y	Y	Y	Y	Y	Y	Y	Y	Y	Y
2	0.974243	0.740194	0.393524									
3	0.933670	0.530711	0.172928									
4	1.092086	0.616614	0.144560									
5												
6												
7												
8												
9												
10												
11												
12												
13												
14												
15												
16												
17												
18												
19												
20												
21												
22												

GraphPad Prism 7.00 - [Project1:Col. stats of Data 1]

Col. stats	A	B	C	D	E	F	G	H	I
	shcontrol	shNOX4 1#	shNOX4 2#	Title	Title	Title	Title	Title	Title
2	Y	Y	Y	Y	Y	Y	Y	Y	Y
3	Minimum	0.9337	0.5307	0.1446					
4	25% Percentile	0.9337	0.5307	0.1446					
5	Median	0.9742	0.6166	0.1729					
6	75% Percentile	1.092	0.7402	0.3935					
7	Maximum	1.092	0.7402	0.3935					
8									
9	Mean	1	0.6292	0.237					
10	Std. Deviation	0.08229	0.1053	0.1363					
11	Std. Error of Mean	0.04751	0.0608	0.07969					
12									
13	Lower 95% CI of mean	0.7956	0.3676	-0.1016					
14	Upper 95% CI of mean	1.204	0.8908	0.5756					
15									
16	Sum	3	1.888	0.711					
17									
18	Shapiro-Wilk normality test								
19	W	0.9265	0.9893	0.8342					
20	P value	0.4757	0.8024	0.1991					
21	Passed normality test (alpha=0.05)?	Yes	Yes	Yes					
22	P value summary	ns	ns	ns					

GraphPad Prism 7.00 - [Project1:Ordinary one-way ANOVA of Data 1]

1way ANOVA			
1	Table Analyzed	Data 1	
2	Data sets analyzed	A : shcontrol	B : shNOX4 1# C : shNOX4 2#
3			
4	ANOVA summary		
5	F	35.96	
6	P value	0.0005	
7	P value summary	***	
8	Significant diff. among means (P < 0.05)?	Yes	
9	R square	0.923	
10			
11	Brown-Forsythe test		
12	F (DFn, DFd)	0.09368 (2, 6)	
13	P value	0.9119	
14	P value summary	ns	
15	Are SDs significantly different (P < 0.05)?	No	
16			
17	Bartlett's test		
18	Bartlett's statistic (corrected)		
19	P value		
20	P value summary		
21	Are SDs significantly different (P < 0.05)?		
22			



GraphPad Prism 7.00 - [Project1:Ordinary one-way ANOVA of Data 1]

File Edit View Insert Change Arrange Family Window Help

Prism File Sheet Undo Clipboard Analysis Interpret Change Draw Write Text Export Print Send LA Help

Family

Search results

Data Tables

Data 1

Info

Project info 1

Results

Col. stats of Data 1

Ordinary one-way ANOVA

ANOVA

Multiple comparisons

Graphs

Data 1

Layouts

1way ANOVA									
Multiple comparisons									
1	Number of families	1							
2	Number of comparisons per family	2							
3	Alpha	0.05							
4									
5	Dunnett's multiple comparisons test	Mean Diff.	95.00% CI of diff.	Significant?	Summary	Adjusted P Value	A-?		
6									
7	shcontrol vs. shNOX4 1#	0.3708	0.1132 to 0.6285	Yes	*	0.0111	B	shNOX4 1#	
8	shcontrol vs. shNOX4 2#	0.763	0.5054 to 1.021	Yes	***	0.0003	C	shNOX4 2#	
9									
10									
11	Test details	Mean 1	Mean 2	Mean Diff.	SE of diff.	n1	n2	q	DF
12									
13	shcontrol vs. shNOX4 1#	1	0.6292	0.3708	0.08998	3	3	4.121	6
14	shcontrol vs. shNOX4 2#	1	0.237	0.763	0.08998	3	3	8.479	6
15									
16									
17									
18									
19									
20									
21									

Ordinary one-way ANOVA of Data 1 Multiple comparisons

Figure 4A (Bax/Bcl-2)

GraphPad Prism 7.00 - [Project1:Data 1]

	Group A	Group B	Group C	Group D	Group E	Group F	Group G	Group H	Group I	Group J	Group K	Group L
	shcontrol	shNOX4 1#	shNOX4 2#	Title	Title	Title	Title	Title	Title	Title	Title	Title
1	Y	Y	Y	Y	Y	Y	Y	Y	Y	Y	Y	Y
2	0.878692	0.640756	0.378170									
3	1.018888	0.415027	0.161880									
4	1.104419	0.477991	0.324051									
5												
6												
7												
8												
9												
10												
11												
12												
13												
14												
15												
16												
17												
18												
19												
20												
21												
22												

GraphPad Prism 7.00 - [Project1:Col. stats of Data 1]

Col. stats	A	B	C	D	E	F	G	H	I
	shcontrol	shNOX4 1#	shNOX4 2#	Title	Title	Title	Title	Title	Title
10	Y	Y	Y	Y	Y	Y	Y	Y	Y
11	Std. Deviation	0.115	0.1165	0.1126					
12	Std. Error of Mean	0.06641	0.06725	0.06498					
13	Lower 95% CI of mean	0.7142	0.2219	0.008435					
14	Upper 95% CI of mean	1.286	0.8006	0.5676					
15	Sum	3	1.534	0.8641					
18	Shapiro-Wilk normality test								
19	W	0.9798	0.9388	0.9232					
20	P value	0.7275	0.5227	0.4637					
21	Passed normality test (alpha=0.05)?	Yes	Yes	Yes					
22	P value summary	ns	ns	ns					

GraphPad Prism 7.00 - [Project1:Ordinary one-way ANOVA of Data 1]

1way ANOVA			
1	Table Analyzed	Data 1	
2	Data sets analyzed	A: shcontrol B: shNOX4 1# C: shNOX4 2#	
4	ANOVA summary		
5	F	30.24	
6	P value	0.0007	
7	P value summary	***	
8	Significant diff. among means (P < 0.05)?	Yes	
9	R square	0.9097	
11	Brown-Forsythe test		
12	F (DFn, DFd)	0.001998 (2, 6)	
13	P value	0.9980	
14	P value summary	ns	
15	Are SDs significantly different (P < 0.05)?	No	
17	Bartlett's test		
18	Bartlett's statistic (corrected)		
19	P value		
20	P value summary		
21	Are SDs significantly different (P < 0.05)?		

GraphPad Prism 7.00 - [Project1:Ordinary one-way ANOVA of Data 1]

File Edit View Insert Change Arrange Family Window Help

Prism File Sheet Undo Clipboard Analysis Interpret Change Draw Write Text Export Print Send LA Help

Family  
 Search results  
 Data Tables  
 Data 1  
 Info  
 Project info 1  
 Results  
 Col. stats of Data 1  
 Ordinary one-way ANOVA  
 ANOVA  
 Multiple comparisons  
 Graphs  
 Data 1  
 Layouts

1way ANOVA									
Multiple comparisons									
1	Number of families	1							
2	Number of comparisons per family	2							
3	Alpha	0.05							
4									
5	Dunnett's multiple comparisons test	Mean Diff.	95.00% CI of diff.	Significant?	Summary	Adjusted P Value	A-?		
6									
7	shcontrol vs. shNOX4 1#	0.4887	0.2206 to 0.7569	Yes	**	0.0036	B	shNOX4 1#	
8	shcontrol vs. shNOX4 2#	0.712	0.4438 to 0.9801	Yes	***	0.0005	C	shNOX4 2#	
9									
10									
11	Test details	Mean 1	Mean 2	Mean Diff.	SE of diff.	n1	n2	q	DF
12									
13	shcontrol vs. shNOX4 1#	1	0.5113	0.4887	0.09365	3	3	5.219	6
14	shcontrol vs. shNOX4 2#	1	0.288	0.712	0.09365	3	3	7.602	6
15									
16									
17									
18									
19									
20									
21									
22									

Ordinary one-way ANOVA of Data 1 | Multiple comparisons

Figure 4B (NOX4)

GraphPad Prism 7.00 - [Object in 统计图]

	Group A	Group B	Group C	Group D	Group E	Group F	Group G	Group H	Group I	Group J	Group K	Group L
	control	NOX4	NOX4+miR-322 mimic	Title	Title	Title	Title	Title	Title	Title	Title	Title
1	Y	Y	Y	Y	Y	Y	Y	Y	Y	Y	Y	Y
2	0.971017	2.982121	1.533381									
3	1.259454	1.916222	1.238745									
4	0.769529	3.040475	1.583079									
5												
6												
7												
8												
9												
10												
11												
12												
13												
14												
15												
16												
17												
18												
19												
20												
21												
22												

GraphPad Prism 7.00 - [Object in 统计图]

Col. stats	A	B	C	D	E	F	G	H	I
	control	NOX4	NOX4+miR-322 mimic	Title	Title	Title	Title	Title	Title
1	Y	Y	Y	Y	Y	Y	Y	Y	Y
2	3	3	3						
3	0.7695	1.916	1.239						
4	0.7695	1.916	1.239						
5	0.971	2.982	1.533						
6	1.259	3.04	1.583						
7	1.259	3.04	1.583						
8									
9	1	2.646	1.452						
10	0.2462	0.6329	0.1861						
11	0.1422	0.3654	0.1075						
12									
13	0.3883	1.074	0.9894						
14	1.612	4.219	1.914						
15									
16	3	7.939	4.355						
17									
18									
19	0.9896	0.7888	0.8557						
20	0.8050	0.0881	0.2557						
21	Yes	Yes	Yes						
22									

GraphPad Prism 7.00 - [Object in 统计图]

1way ANOVA			
1	Table Analyzed	Data 1	
2	Data sets analyzed	A: control	B: NOX4 C: NOX4+miR-322 mimic
3			
4	ANOVA summary		
5	F	13.13	
6	P value	0.0064	
7	P value summary	**	
8	Significant diff. among means (P < 0.05)?	Yes	
9	R square	0.814	
10			
11	Brown-Forsythe test		
12	F (DFn, DFd)	0.4237 (2, 6)	
13	P value	0.6728	
14	P value summary	ns	
15	Are SDs significantly different (P < 0.05)?	No	
16			
17	Bartlett's test		
18	Bartlett's statistic (corrected)		
19	P value		
20	P value summary		
21	Are SDs significantly different (P < 0.05)?		
22			

GraphPad Prism 7.00 - [Object in 统计图]

File Edit View Insert Change Arrange Family Window Help

Prism File Sheet Undo Clipboard Analysis Interpret Change Draw Write Text Export Print Send LA Help

Family

Search results

Data Tables

Data 1

Info

Project info 1

Results

Col. stats of Data 1

Ordinary one-way ANOVA

ANOVA

Multiple comparisons

Graphs

Data 1

Layouts

1-way ANOVA								
Multiple comparisons								
1	Number of families	1						
2	Number of comparisons per family	2						
3	Alpha	0.05						
4								
5	Dunnett's multiple comparisons test	Mean Diff.	95.00% CI of diff.	Significant?	Summary	Adjusted P Value	B-?	
6								
7	NOX4 vs. control	1.646	0.6959 to 2.597	Yes	**	0.0046	A	control
8	NOX4 vs. NOX4+miR-322 mimic	1.195	0.2441 to 2.145	Yes	*	0.0202	C	NOX4+miR-322 mimic
9								
10								
11	Test details	Mean 1	Mean 2	Mean Diff.	SE of diff.	n1	n2	q
12								DF
13	NOX4 vs. control	2.646	1	1.646	0.332	3	3	4.959
14	NOX4 vs. NOX4+miR-322 mimic	2.646	1.452	1.195	0.332	3	3	3.599
15								
16								
17								
18								
19								
20								
21								

Ordinary one-way ANOVA of Data 1 | Multiple comparisons

Figure 4B (Cleaved Caspase-3)

GraphPad Prism 7.00 - [Object in 统计图]

	Group A	Group B	Group C	Group D	Group E	Group F	Group G	Group H	Group I	Group J	Group K	Gr A
1	control	NOX4	NOX4+miR-322 mimic	Title	Title	Title	Title	Title	Title	Title	Title	
2	Y	Y	Y	Y	Y	Y	Y	Y	Y	Y	Y	
3	1.180958	1.757058	0.737129									
4	0.998587	1.434672	1.124777									
5	0.820455	1.381080	1.149701									
6												
7												
8												
9												
10												
11												
12												
13												
14												
15												
16												
17												
18												
19												
20												
21												
22												

GraphPad Prism 7.00 - [Object in 统计图]

Col. stats	A	B	C	D	E	F	G	H	I
	control	NOX4	NOX4+miR-322 mimic	Title	Title	Title	Title	Title	Title
2	Y	Y	Y	Y	Y	Y	Y	Y	Y
3	Minimum	0.8205	1.381	0.7371					
4	25% Percentile	0.8205	1.381	0.7371					
5	Median	0.9986	1.435	1.125					
6	75% Percentile	1.181	1.757	1.15					
7	Maximum	1.181	1.757	1.15					
8									
9	Mean	1	1.524	1.004					
10	Std. Deviation	0.1803	0.2034	0.2313					
11	Std. Error of Mean	0.1041	0.1174	0.1336					
12									
13	Lower 95% CI of mean	0.5522	1.019	0.4292					
14	Upper 95% CI of mean	1.448	2.029	1.579					
15									
16	Sum	3	4.573	3.012					
17									
18	Shapiro-Wilk normality test								
19	W	1	0.8544	0.7951					
20	P value	0.9870	0.2524	0.1029					
21	Passed normality test (alpha=0.05)?	Yes	Yes	Yes					
22	P value summary	ns	ns	ns					

GraphPad Prism 7.00 - [Object in 统计图]

1way ANOVA				
ANOVA				
1	Table Analyzed	Data 1		
2	Data sets analyzed	A: control	B: NOX4	C: NOX4+miR-322 mimic
3				
4	ANOVA summary			
5	F	6.426		
6	P value	0.0322		
7	P value summary	*		
8	Significant diff. among means (P < 0.05)?	Yes		
9	R square	0.6817		
10				
11	Brown-Forsythe test			
12	F (DFn, DFd)	0.008147 (2, 6)		
13	P value	0.9919		
14	P value summary	ns		
15	Are SDs significantly different (P < 0.05)?	No		
16				
17	Bartlett's test			
18	Bartlett's statistic (corrected)			
19	P value			
20	P value summary			
21	Are SDs significantly different (P < 0.05)?			



GraphPad Prism 7.00 - [Object in 统计图]

File Edit View Insert Change Arrange Family Window Help  
 Prism File Sheet Undo Clipboard Analysis Interpret Change Draw Write Text Export Print Send LA Help

Family  
 Search results  
 Data Tables  
 Data 1  
 Info  
 Project info 1  
 Results  
 Col. stats of Data 1  
 Ordinary one-way ANOVA  
 ANOVA  
 Multiple comparisons  
 Graphs  
 Data 1  
 Layouts

1way ANOVA									
Multiple comparisons									
1	Number of families	1							
2	Number of comparisons per family	2							
3	Alpha	0.05							
4									
5	Dunnett's multiple comparisons test	Mean Diff.	95.00% CI of diff.	Significant?	Summary	Adjusted P Value	B-?		
6									
7	NOX4 vs. control	0.5243	0.04259 to 1.006	Yes	*	0.0363	A	control	
8	NOX4 vs. NOX4+miR-322 mimic	0.5204	0.03872 to 1.002	Yes	*	0.0374	C	NOX4+miR-322 mimic	
9									
10									
11	Test details	Mean 1	Mean 2	Mean Diff.	SE of diff.	n1	n2	q	DF
12									
13	NOX4 vs. control	1.524	1	0.5243	0.1682	3	3	3.116	6
14	NOX4 vs. NOX4+miR-322 mimic	1.524	1.004	0.5204	0.1682	3	3	3.093	6
15									
16									
17									
18									
19									
20									
21									
22									

Ordinary one-way ANOVA of Data 1 Multiple comparisons

Figure 4B (Bax/Bcl-2)

GraphPad Prism 7.00 - [Object in 统计图]

	Group A	Group B	Group C	Group D	Group E	Group F	Group G	Group H	Group I	Group J	Group K	Group L
	control	NOX4	NOX4+miR-322 mimic	Title	Title	Title	Title	Title	Title	Title	Title	Title
1	1.071458	2.002123	1.080241									
2	0.936559	1.815811	0.806042									
3	0.991982	1.925176	0.599078									
4												
5												
6												
7												
8												
9												
10												
11												
12												
13												
14												
15												
16												
17												
18												
19												
20												
21												
22												

GraphPad Prism 7.00 - [Object in 统计图]

Col. stats		A	B	C	D	E	F	G	H	I
		control	NOX4	NOX4+miR-322 mimic	Title	Title	Title	Title	Title	Title
1	Number of values	3	3	3						
2										
3	Minimum	0.9366	1.816	0.5991						
4	25% Percentile	0.9366	1.816	0.5991						
5	Median	0.992	1.925	0.806						
6	75% Percentile	1.071	2.002	1.08						
7	Maximum	1.071	2.002	1.08						
8										
9	Mean	1	1.914	0.8285						
10	Std. Deviation	0.06781	0.09362	0.2414						
11	Std. Error of Mean	0.03915	0.05405	0.1394						
12										
13	Lower 95% CI of mean	0.8316	1.682	0.2289						
14	Upper 95% CI of mean	1.168	2.147	1.428						
15										
16	Sum	3	5.743	2.485						
17										
18	Shapiro-Wilk normality test									
19	W	0.9895	0.99	0.9935						
20	P value	0.8041	0.8088	0.8463						
21	Passed normality test (alpha=0.05)?	Yes	Yes	Yes						
22										

GraphPad Prism 7.00 - [Object in 统计图]

1way ANOVA		ANOVA		
1	Table Analyzed	Data 1		
2	Data sets analyzed	A: control	B: NOX4	C: NOX4+miR-322 mimic
3				
4	ANOVA summary			
5	F	42.82		
6	P value	0.0003		
7	P value summary	***		
8	Significant diff. among means (P < 0.05)?	Yes		
9	R square	0.9345		
10				
11	Brown-Forsythe test			
12	F (DFn, DFd)	1.383 (2, 6)		
13	P value	0.3206		
14	P value summary	ns		
15	Are SDs significantly different (P < 0.05)?	No		
16				
17	Bartlett's test			
18	Bartlett's statistic (corrected)			
19	P value			
20	P value summary			
21	Are SDs significantly different (P < 0.05)?			
22				



GraphPad Prism 7.00 - [Object in 统计图]

File Edit View Insert Change Arrange Family Window Help

Prism File Sheet Undo Clipboard Analysis Interpret Change Draw Write Text Export Print Send LA Help

Family

Search results

Data Tables

Data 1

Info

Project info 1

Results

Col. stats of Data 1

Ordinary one-way ANOVA

ANOVA

Multiple comparisons

Graphs

Data 1

Layouts

1-way ANOVA									
Multiple comparisons									
1	Number of families	1							
2	Number of comparisons per family	2							
3	Alpha	0.05							
4									
5	Dunnett's multiple comparisons test	Mean Diff.	95.00% CI of diff.	Significant?	Summary	Adjusted P Value	B-7		
6									
7	NOX4 vs. control	0.9144	0.5532 to 1.276	Yes	***	0.0007	A	control	
8	NOX4 vs. NOX4+miR-322 mimic	1.086	0.7247 to 1.447	Yes	***	0.0003	C	NOX4+miR-322 mimic	
9									
10									
11	Test details	Mean 1	Mean 2	Mean Diff.	SE of diff.	n1	n2	q	DF
12									
13	NOX4 vs. control	1.914	1	0.9144	0.1262	3	3	7.248	6
14	NOX4 vs. NOX4+miR-322 mimic	1.914	0.8285	1.086	0.1262	3	3	8.608	6
15									
16									
17									
18									
19									
20									
21									
22									

Ordinary one-way ANOVA of Data 1 Multiple comparisons

Figure 4C

GraphPad Prism 7.00 - [Object in 论文图片]

	Group A	Group B	Group C	Group D	Group E	Group F	Group G	Group H	Group I	Group J	Group K	Group L
	control	NOX4	NOX4+miR-322 mimic	Title	Title	Title	Title	Title	Title	Title	Title	Title
1	Y	Y	Y	Y	Y	Y	Y	Y	Y	Y	Y	Y
2	55.0000	70.9251		29.5081								
3	40.1869	72.2891		32.8042								
4	43.0107	72.5274		28.9473								
5												
6												
7												
8												
9												
10												
11												
12												
13												
14												
15												
16												
17												
18												
19												
20												
21												
22												

GraphPad Prism 7.00 - [Object in 论文图片]

Col. stats	A	B	C	D	E	F	G	H	I
	control	NOX4	NOX4+miR-322 mimic	Title	Title	Title	Title	Title	Title
4	Y	Y	Y	Y	Y	Y	Y	Y	Y
5	25% Percentile	40.19	70.93	28.95					
6	Median	43.01	72.29	29.51					
7	75% Percentile	55	72.53	32.8					
8	Maximum	55	72.53	32.8					
9	Mean	46.07	71.91	30.42					
10	Std. Deviation	7.865	0.8645	2.084					
11	Std. Error of Mean	4.541	0.4991	1.203					
12									
13	Lower 95% CI of mean	26.53	69.77	25.24					
14	Upper 95% CI of mean	65.6	74.06	35.6					
15									
16	Sum	138.2	215.7	91.26					
17									
18	Shapiro-Wilk normality test								
19	W	0.8868	0.8587	0.8564					
20	P value	0.3447	0.2641	0.2578					
21	Passed normality test (alpha=0.05)?	Yes	Yes	Yes					
22	P value summary	ns	ns	ns					
23									
24									

GraphPad Prism 7.00 - [Object in 论文图片]

1way ANOVA		ANOVA		
1	Table Analyzed	Data 2		
2	Data sets analyzed	A: control	B: NOX4	C: NOX4+miR-322 mimic
3				
4	ANOVA summary			
5	F	59.03		
6	P value	0.0001		
7	P value summary	***		
8	Significant diff. among means (P < 0.05)?	Yes		
9	R square	0.9516		
10				
11	Brown-Forsythe test			
12	F (DFn, DFd)	1.163 (2, 6)		
13	P value	0.3741		
14	P value summary	ns		
15	Are SDs significantly different (P < 0.05)?	No		
16				
17	Bartlett's test			
18	Bartlett's statistic (corrected)			
19	P value			
20	P value summary			
21	Are SDs significantly different (P < 0.05)?			

GraphPad Prism 7.00 - [Object in 论文图片]

File Edit View Insert Change Arrange Family Window Help

Prism File Sheet Undo Clipboard Analysis Interpret Change Draw Write Text Export Print Send LA Help

Family

Search results

Data Tables

Unpaired t test data

Data 2

Info

Results

Col. stats of Data 2

Ordinary one-way ANOVA

ANOVA

Multiple comparisons

Graphs

Unpaired t test data

Data 2

Layouts

Floating Notes

Data with notes

1way ANOVA									
Multiple comparisons									
1	Number of families	1							
2	Number of comparisons per family	2							
3	Alpha	0.05							
4									
5	Dunnett's multiple comparisons test	Mean Diff.	95.00% CI of diff.	Significant?	Summary	Adjusted P Value	B-?		
6									
7	NOX4 vs. control	25.85	14.8 to 36.89	Yes	***	0.0010	A	control	
8	NOX4 vs. NOX4+miR-322 mimic	41.49	30.45 to 52.54	Yes	****	0.0001	C	NOX4+miR-322 mimic	
9									
10									
11	Test details	Mean 1	Mean 2	Mean Diff.	SE of diff.	n1	n2	q	DF
12									
13	NOX4 vs. control	71.91	46.07	25.85	3.857	3	3	6.701	6
14	NOX4 vs. NOX4+miR-322 mimic	71.91	30.42	41.49	3.857	3	3	10.76	6
15									
16									
17									
18									
19									
20									
21									

Ordinary one-way ANOVA of Data 2

Figure 5B

GraphPad Prism 7.00 - [Object in 统计图]

Table format:	Outcome A	Outcome B	Outcome C	Outcome D	Outcome E	Outcome F	Outcome G	Outcome H	Outcome I	Outcome J	Outcome K	Outcome L
Contingency	normal	NTDs	Title	Title	Title	Title	Title	Title	Title	Title	Title	Title
1	control	0	23									
2	ATRA	18	5									
3	ATRA+miR32	10	13									
4	Title											
5	Title											
6	Title											
7	Title											
8	Title											
9	Title											
10	Title											
11	Title											
12	Title											
13	Title											
14	Title											
15	Title											
16	Title											
17	Title											
18	Title											
19	Title											
20	Title											
21	Title											
22	Title											
23	Title											
24	Title											

Retrospective (smoking and cancer) Row 10, Column G

GraphPad Prism 7.00 - [Project2:Contingency of Data 1]

Contingency												
3	P value and statistical significance											
4	Test	Chi-square										
5	Chi-square, df	29.57, 1										
6	z	5.438										
7	P value	<0.0001										
8	P value summary	****										
9	One- or two-sided	Two-sided										
10	Statistically significant (P < 0.05)?	Yes										
11												
12	Effect size	Value	95% CI									
13												
14	Odds ratio	Infinity	16.28 to Infinity									
15	Reciprocal of odds ratio	0	0 to 0.06142									
16												
17	Methods used to compute CIs											
18	Odds ratio	Baptista-Pike										
19												
20	Data analyzed	normal	NTDs	Total								
21	control	23	0	23								
22	ATRA	5	18	23								
23	Total	28	18	46								
24												

Contingency of Data 1 Tabular results

GraphPad Prism 7.00 - [Project2:Contingency of Data 1]

Contingency												
3	P value and statistical significance											
4	Test	Chi-square										
5	Chi-square, df	5.841, 1										
6	z	2.417										
7	P value	0.0157										
8	P value summary	*										
9	One- or two-sided	Two-sided										
10	Statistically significant (P < 0.05)?	Yes										
11												
12	Effect size	Value	95% CI									
13												
14	Odds ratio	0.2137	0.06142 to 0.8346									
15	Reciprocal of odds ratio	4.68	1.198 to 16.28									
16												
17	Methods used to compute CIs											
18	Odds ratio	Baptista-Pike										
19												
20	Data analyzed	normal	NTDs	Total								
21	ATRA	5	18	23								
22	ATRA+miR322	13	10	23								
23	Total	18	28	46								
24												

Contingency of Data 1

Figure 5C

GraphPad Prism 7.00 - [Object in 统计图]

	Group A	Group B	Group C	Group D	Group E	Group F	Group G	Group H	Group I	Group J	Group K	Group L
	control	ATRA	ATRA+miR322	Title	Title	Title	Title	Title	Title	Title	Title	Title
1	Y	Y	Y	Y	Y	Y	Y	Y	Y	Y	Y	Y
2	1.058270	0.468110	2.554604									
3	1.088525	0.374120	4.076139									
4	1.013511	0.334710	3.486820									
5	0.981851	0.402623	2.559421									
6	1.078160	0.335448	2.983052									
7												
8												
9												
10												
11												
12												
13												
14												
15												
16												
17												
18												
19												
20												
21												
22												

Data 1 Row 6, Column E

GraphPad Prism 7.00 - [Project2:Col. stats of Data 1]

Col. stats	A	B	C	D	E	F	G	H	I
	control	ATRA	ATRA+miR322 mimic	Title	Title	Title	Title	Title	Title
2	Y	Y	Y	Y	Y	Y	Y	Y	Y
3	Minimum	0.9819	0.3347	2.555					
4	25% Percentile	0.9977	0.3351	2.557					
5	Median	1.018	0.3741	2.983					
6	75% Percentile	1.073	0.4354	3.781					
7	Maximum	1.089	0.4681	4.076					
8									
9	Mean	1.032	0.383	3.132					
10	Std. Deviation	0.04186	0.05545	0.6521					
11	Std. Error of Mean	0.01883	0.0248	0.2916					
12									
13	Lower 95% CI of mean	0.9803	0.3141	2.322					
14	Upper 95% CI of mean	1.084	0.4519	3.942					
15									
16	Sum	5.16	1.915	15.66					
17									
18	Shapiro-Wilk normality test								
19	W	0.9614	0.8942	0.897					
20	P value	0.8179	0.3785	0.3934					
21	Passed normality test (alpha=0.05)?	Yes	Yes	Yes					
22	P value summary	ns	ns	ns					

Col. stats of Data 1 Column statistics

GraphPad Prism 7.00 - [Project2:Ordinary one-way ANOVA of Data 1]

1way ANOVA ANOVA			
1	Table Analyzed	Data 1	
2	Data sets analyzed	A: control	B: ATRA C: ATRA+miR322 mimic
3			
4	ANOVA summary		
5	F	72.03	
6	P value	<0.0001	
7	P value summary	****	
8	Significant diff. among means (P < 0.05)?	Yes	
9	R square	0.9231	
10			
11	Brown-Forsythe test		
12	F (DFn, DFd)	6.666 (2, 12)	
13	P value	0.0113	
14	P value summary	*	
15	Are SDs significantly different (P < 0.05)?	Yes	
16			
17	Bartlett's test		
18	Bartlett's statistic (corrected)	25.81	
19	P value	<0.0001	
20	P value summary	****	
21	Are SDs significantly different (P < 0.05)?	Yes	
22			

Ordinary one-way ANOVA of Data 1 ANOVA



GraphPad Prism 7.00 - [Project2:Ordinary one-way ANOVA of Data 1]

File Edit View Insert Change Arrange Family Window Help

Prism File Sheet Undo Clipboard Analysis Interpret Change Draw Write Text Export Print Send LA Help

Family

Search results

Data Tables

Data 1

Info

Project info 1

Results

Col. stats of Data 1

Ordinary one-way ANOVA

ANOVA

Multiple comparisons

Graphs

Data 1

Layouts

1way ANOVA								
Multiple comparisons								
1	Number of families	1						
2	Number of comparisons per family	2						
3	Alpha	0.05						
4								
5	Dunnett's multiple comparisons test	Mean Diff.	95.00% CI of diff.	Significant?	Summary	Adjusted P Value	A-?	
6								
7	control vs. ATRA	0.649	0.04979 to 1.248	Yes	*	0.0344	B	ATRA
8	control vs. ATRA+miR322 mimic	-2.1	-2.699 to -1.501	Yes	****	0.0001	C	ATRA+miR322 mim
9								
10								
11	Test details	Mean 1	Mean 2	Mean Diff.	SE of diff.	n1	n2	q
12								
13	control vs. ATRA	1.032	0.383	0.649	0.2394	5	5	2.71
14	control vs. ATRA+miR322 mimic	1.032	3.132	-2.1	0.2394	5	5	8.77
15								
16								
17								
18								
19								
20								
21								
22								

Ordinary one-way ANOVA of Data 1 Multiple comparisons

Figure 5D (NOX4)

GraphPad Prism 7.00 - [Project1:Data 1]

	Group A	Group B	Group C	Group D	Group E	Group F	Group G	Group H	Group I	Group J	Group K	Gr
1	Y	Y	Y	Y	Y	Y	Y	Y	Y	Y	Y	
2	0.922338	2.712946	0.649152									
3	1.034571	1.481524	0.458234									
4	1.043093	2.096229	0.582863									
5												
6												
7												
8												
9												
10												
11												
12												
13												
14												
15												
16												
17												
18												
19												
20												
21												
22												

GraphPad Prism 7.00 - [Project1:Col. stats of Data 1]

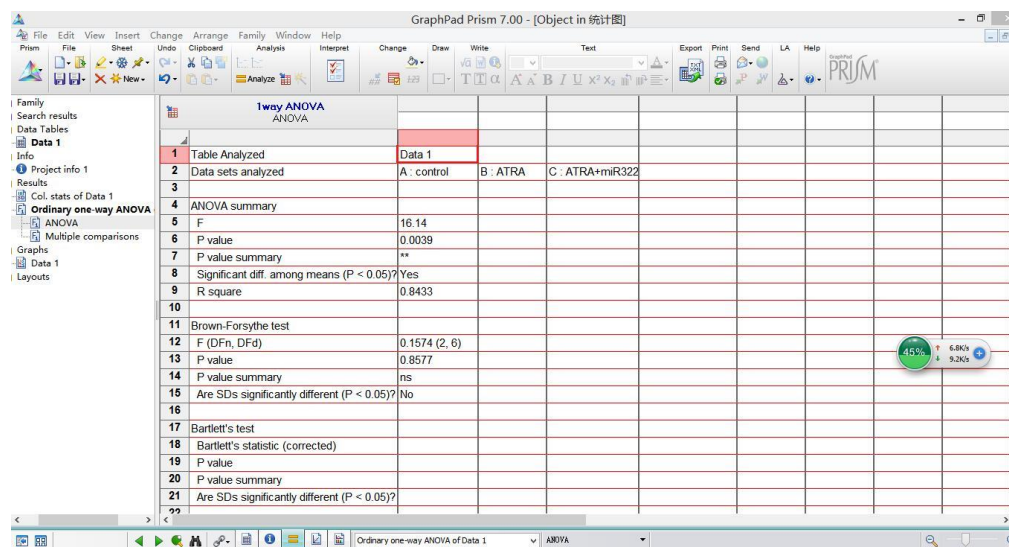
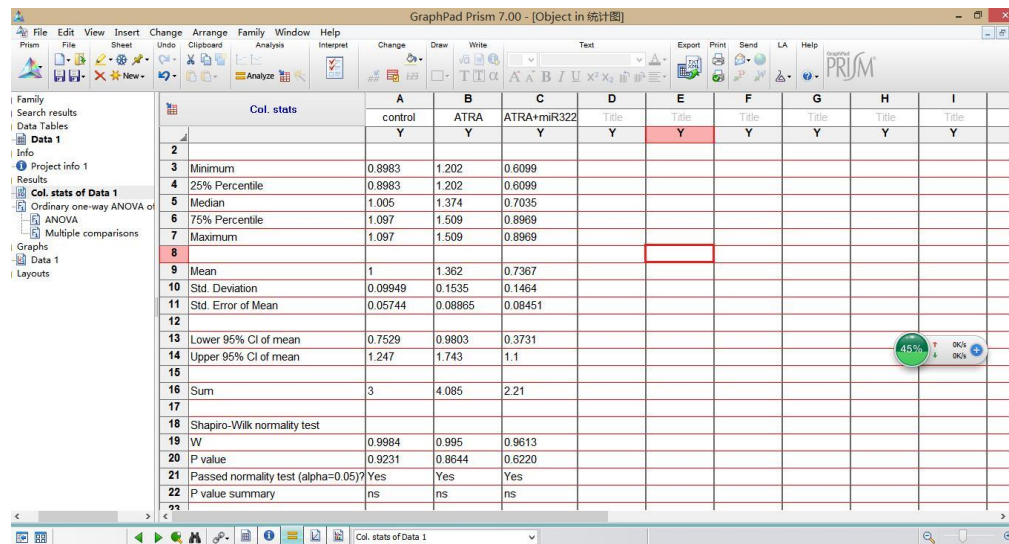
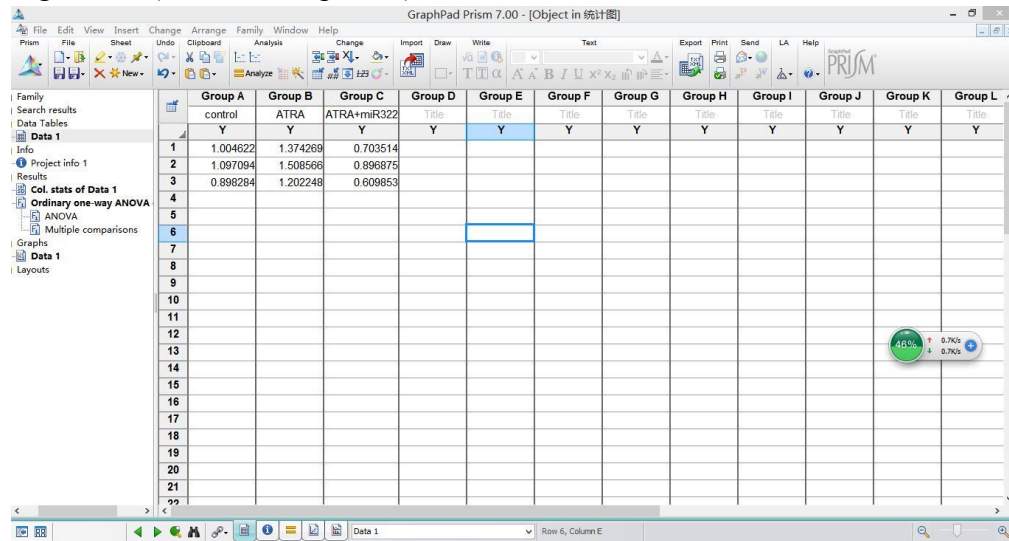
Col. stats	A	B	C	D	E	F	G	H	I
control	ATRA	ATRA+miR322 mimic	Title	Title	Title	Title	Title	Title	Title
10	Y	Y	Y	Y	Y	Y	Y	Y	Y
10	Std. Deviation	0.06739	0.6157	0.09693					
11	Std. Error of Mean	0.03891	0.3555	0.05596					
12									
13	Lower 95% CI of mean	0.8326	0.5674	0.3226					
14	Upper 95% CI of mean	1.167	3.626	0.8042					
15									
16	Sum	3	6.291	1.69					
17									
18	Shapiro-Wilk normality test								
19	W	0.8026	1	0.9698					
20	P value	0.1208	0.9982	0.6665					
21	Passed normality test (alpha=0.05)?	Yes	Yes	Yes					
22	P value summary	ns	ns	ns					
23									
24									
25									
26									
27									
28									
29									
30									
31									

GraphPad Prism 7.00 - [Project1:Ordinary one-way ANOVA of Data 1]

1way ANOVA			
1	Table Analyzed	Data 1	
2	Data sets analyzed	A : control B : ATRA C : ATRA+miR322 mimic	
3			
4	ANOVA summary		
5	F	14.29	
6	P value	0.0052	
7	P value summary	**	
8	Significant diff. among means (P < 0.05)?	Yes	
9	R square	0.8265	
10			
11	Brown-Forsythe test		
12	F (DFn, DFd)	2.884 (2, 6)	
13	P value	0.1326	
14	P value summary	ns	
15	Are SDs significantly different (P < 0.05)?	No	
16			
17	Bartlett's test		
18	Bartlett's statistic (corrected)		
19	P value		
20	P value summary		
21	Are SDs significantly different (P < 0.05)?		



Figure 5D (Cleaved Caspase-3)



GraphPad Prism 7.00 - [Object in 统计图]

File Edit View Insert Change Arrange Family Window Help

Prism File Sheet Undo Clipboard Analysis Interpret Change Draw Write Text Export Print Send LA Help

Family

Search results

Data Tables

Data 1

Info

Project info 1

Results

Col. stats of Data 1

Ordinary one-way ANOVA

ANOVA

Multiple comparisons

Graphs

Data 1

Layouts

1-way ANOVA									
Multiple comparisons									
1	Number of families	1							
2	Number of comparisons per family	2							
3	Alpha	0.05							
4									
5	Dunnett's multiple comparisons test	Mean Diff.	95.00% CI of diff.	Significant?	Summary	Adjusted P Value	B-?		
6									
7	ATRA vs. control	0.3617	0.04547 to 0.6779	Yes	*	0.0298	A control		
8	ATRA vs. ATRA+miR322	0.6249	0.3087 to 0.9412	Yes	**	0.0024	C ATRA+miR322		
9									
10									
11	Test details	Mean 1	Mean 2	Mean Diff.	SE of diff.	n1	n2	q	DF
12									
13	ATRA vs. control	1.362	1	0.3617	0.1105	3	3	3.275	6
14	ATRA vs. ATRA+miR322	1.362	0.7367	0.6249	0.1105	3	3	5.658	6
15									
16									
17									
18									
19									
20									
21									

Ordinary one-way ANOVA of Data 1





GraphPad Prism 7.00 - [Project1:Ordinary one-way ANOVA of Data 1]

File Edit View Insert Change Arrange Family Window Help

Prism File Sheet Undo Clipboard Analysis Interpret Change Draw Write Text Export Print Send LA Help

Family

Search results

Data Tables

Data 1

Info

Project info 1

Results

Col. stats of Data 1

Ordinary one-way ANOVA

ANOVA

Multiple comparisons

Graphs

Data 1

Layouts

1-way ANOVA									
Multiple comparisons									
1	Number of families	1							
2	Number of comparisons per family	2							
3	Alpha	0.05							
4									
5	Dunnett's multiple comparisons test	Mean Diff.	95.00% CI of diff.	Significant?	Summary	Adjusted P Value	B-?		
6									
7	ATRA vs. control	0.9435	0.4318 to 1.455	Yes	**	0.0034	A	control	
8	ATRA vs. ATRA+miR322 mimic	1.303	0.7915 to 1.815	Yes	***	0.0006	C	ATRA+miR322 mimic	
9									
10									
11	Test details	Mean 1	Mean 2	Mean Diff.	SE of diff.	n1	n2	q	DF
12									
13	ATRA vs. control	1.943	1	0.9435	0.1787	3	3	5.279	6
14	ATRA vs. ATRA+miR322 mimic	1.943	0.6403	1.303	0.1787	3	3	7.292	6
15									
16									
17									
18									
19									
20									
21									

Ordinary one-way ANOVA of Data 1 | Multiple comparisons

Figure 5E

GraphPad Prism 7.00 - [Object in 论文图片]

	Group A	Group B	Group C	Group D	Group E	Group F	Group G	Group H	Group I	Group J	Group K	Gr
1	Y	Y	Y	Y	Y	Y	Y	Y	Y	Y	Y	
2	8.6956	34.7490	17.4757									
3	6.7669	37.2881	16.2337									
4	11.6465	37.8048	16.6280									

GraphPad Prism 7.00 - [Object in 论文图片]

Col. stats	A	B	C	D	E	F	G	H	I
	control	ATRA	ATRA+miR322 mimic	Title	Title	Title	Title	Title	Title
7	Maximum	11.65	37.8	17.48					
9	Mean	9.036	38.61	16.78					
10	Std. Deviation	2.458	1.636	0.6348					
11	Std. Error of Mean	1.419	0.9443	0.3664					
13	Lower 95% CI of mean	2.931	32.55	15.2					
14	Upper 95% CI of mean	15.14	40.68	18.36					
16	Sum	27.11	109.8	50.34					
18	Shapiro-Wilk normality test								
19	W	0.9856	0.8726	0.9575					
20	P value	0.7701	0.3029	0.6033					
21	Passed normality test (alpha=0.05)?	Yes	Yes	Yes					
22	P value summary	ns	ns	ns					

GraphPad Prism 7.00 - [Object in 论文图片]

1way ANOVA		ANOVA		
1	Table Analyzed	Unpaired t test data		
2	Data sets analyzed	A: control	B: ATRA	C: ATRA+miR322 mimic
4	ANOVA summary			
5	F	199.7		
6	P value	<0.0001		
7	P value summary	****		
8	Significant diff. among means (P < 0.05)?	Yes		
9	R square	0.9852		
11	Brown-Forsythe test			
12	F (DFn, DFd)	0.7828 (2, 6)		
13	P value	0.4988		
14	P value summary	ns		
15	Are SDs significantly different (P < 0.05)?	No		
17	Bartlett's test			
18	Bartlett's statistic (corrected)			
19	P value			
20	P value summary			
21	Are SDs significantly different (P < 0.05)?			

GraphPad Prism 7.00 - [Object in 论文图片]

File Edit View Insert Change Arrange Family Window Help

Prism File Sheet Undo Clipboard Analysis Interpret Change Draw Write Text Export Print Send LA Help

Family

Search results

Data Tables

Unpaired t test data

Info

Results

Col. stats of Unpaired t test

Ordinary one-way ANOVA

ANOVA

Multiple comparisons

Graphs

Unpaired t test data

Layouts

Floating Notes

Data with notes

**1way ANOVA**  
Multiple comparisons

1	Number of families	1							
2	Number of comparisons per family	2							
3	Alpha	0.05							
4									
5	Dunnett's multiple comparisons test	Mean Diff.	95.00% CI of diff.	Significant?	Summary	Adjusted P Value	B-?		
6									
7	ATRA vs. control	27.58	23.5 to 31.65	Yes	****	0.0001	A	control	
8	ATRA vs. ATRA+miR322 mimic	19.83	15.76 to 23.91	Yes	****	0.0001	C	ATRA+miR322 mimic	
9									
10									
11	Test details	Mean 1	Mean 2	Mean Diff.	SE of diff.	n1	n2	q	DF
12									
13	ATRA vs. control	36.61	9.036	27.58	1.423	3	3	19.37	6
14	ATRA vs. ATRA+miR322 mimic	36.61	16.78	19.83	1.423	3	3	13.93	6
15									
16									
17									
18									
19									
20									
21									

Ordinary one-way ANOVA of Unpaired t test d... Multiple comparisons