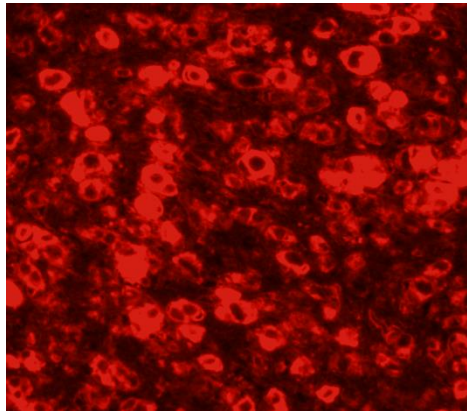


EMP2: VectaRed



DUAL STAINING

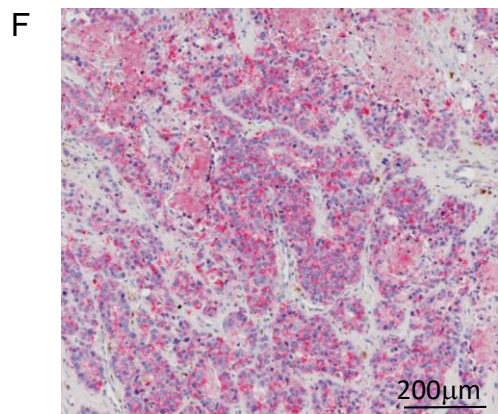
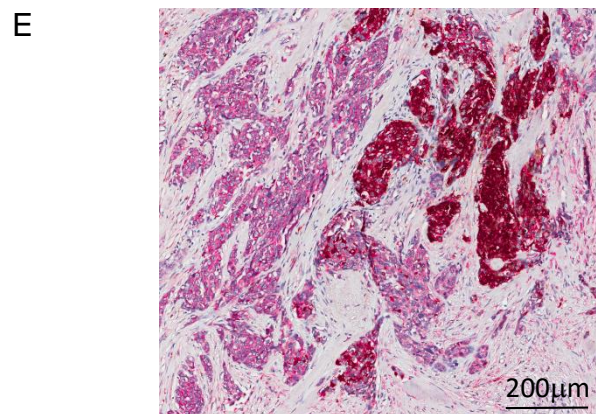
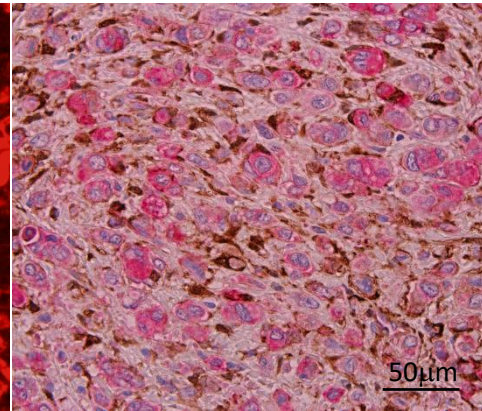


Fig S2. EMP2 and ALDH1 staining in breast cancer. A. EMP2 expression in representative sections of normal, DCIS, and invasive ductal cancer (IDC). Staining was visualized using DAB (3,3'-Diaminobenzidine; brown). Magnification: 100X, with high magnification insets provided. B. Representative staining of ALDH1 staining from a patient with invasive breast cancer, using DAB for visualization of staining . A higher magnification inset is shown to the right. C. ALDH1 staining in a representative normal breast sample as above. D. Double staining of EMP2 and ALDH1 in a metastatic lymph node. 5 patients were double stained with ALDH1 and EMP2, and staining for EMP2 (red; Vectastain) and ALDH1 (brown; DAB) is shown in a representative patient. Within metastatic lesions, all ALDH1 cells reside within areas of high EMP2 expression. No expression of either protein was observed in lymphoid cells although some ALDH1 staining appeared within the stroma. E. 5 additional patients were double stained for ALDH1 and EMP2 with IDC, with a representative image of ALDH1+/EMP2+ staining shown. F. A representative example of EMP2+/ALDH1- staining in a patient with IBC staining. Magnification=100X.