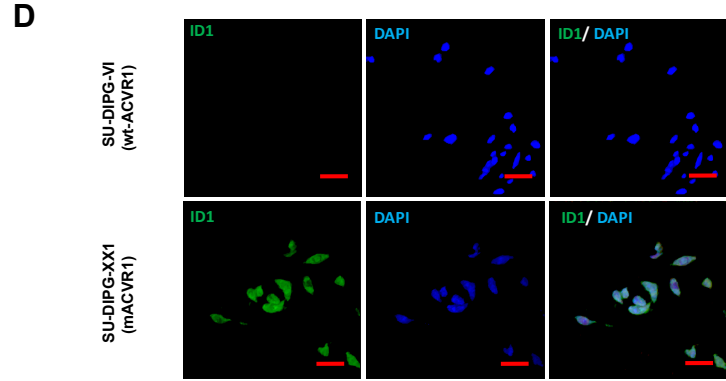
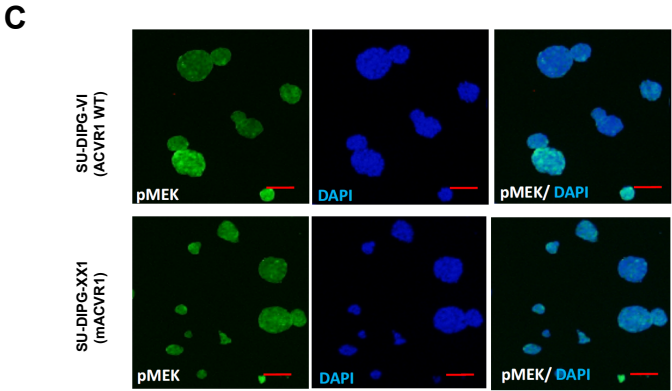
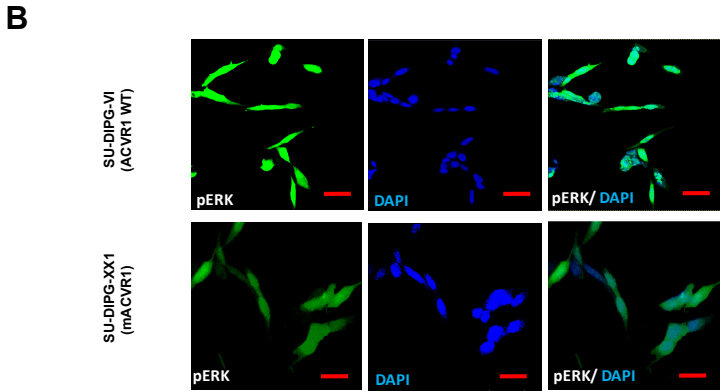
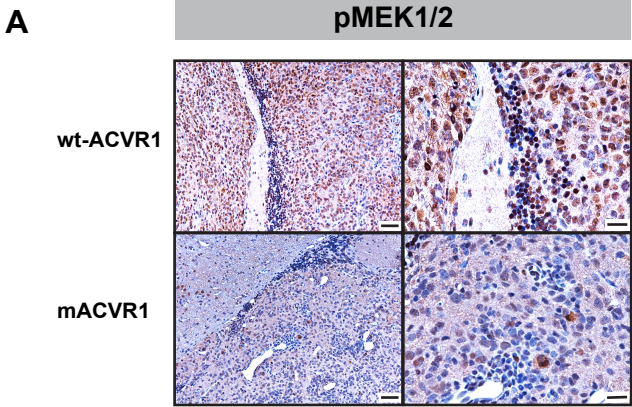


Supplementary Fig S2



Supplementary Figure S2: (A) Immunohistochemistry (IHC) staining for pMEK1/2 in paraffin embedded SB brainstem tumor sections (wt-ACVR1 and mACVR1). Scale bar on the left panel is 50 μ m, scale bar for the right panel is 20 μ m. (B-D) Immunocytochemistry (ICC) staining for pERK1/2 (B) and pMEK1/2 (C) and ID1 (D) on human DIPG cells: SU-DIPG VI (wt-ACVR1) and SU DIPG XX1 (mACVR1). Scale bar = 50 μ m.