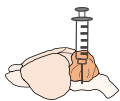
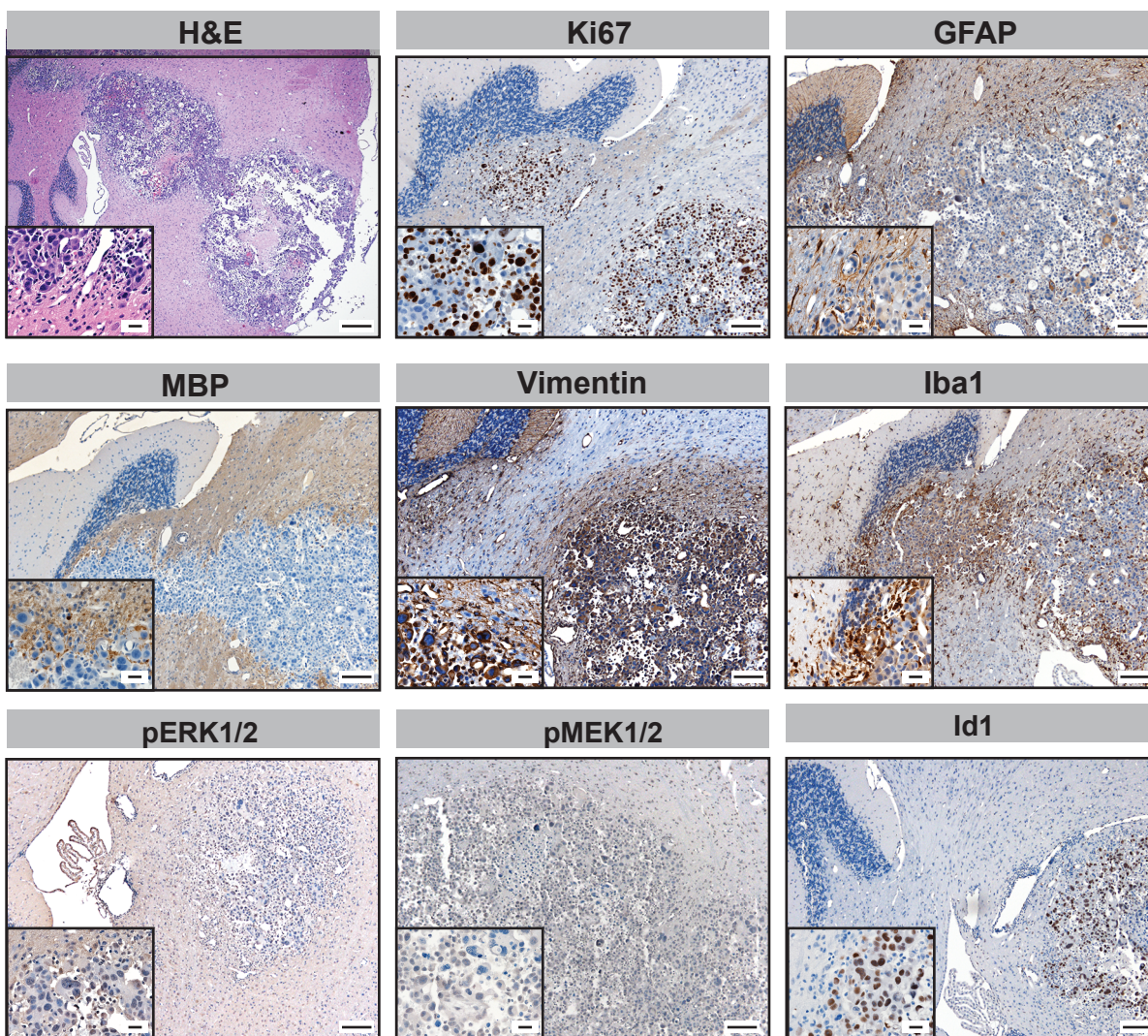


Supplementary Figure S4

mACVR1 NS
implantation to pons



Day: 0 → Histology analysis



Supplementary Figure S4: Mice bearing mACVR1 intracranial brainstem gliomas were processed for histological analysis when they displayed signs of tumor burden. Paraffin embedded mACVR1 tumor sections were stained with Hematoxylin and Eosin (H&E), Ki67 (proliferating cells), GFAP (astrocytes), MBP (myelin sheaths and oligodendrocytes), Vimentin (ependymal cells and astrocytes), Iba1 (microglia), pERK1/2, pMEK1/2, or Id1. Scale bar = 200 μ m for the H&E. Scale bar = 100 μ m for the immunostains. Scale bar for all magnified insets = 20 μ m.