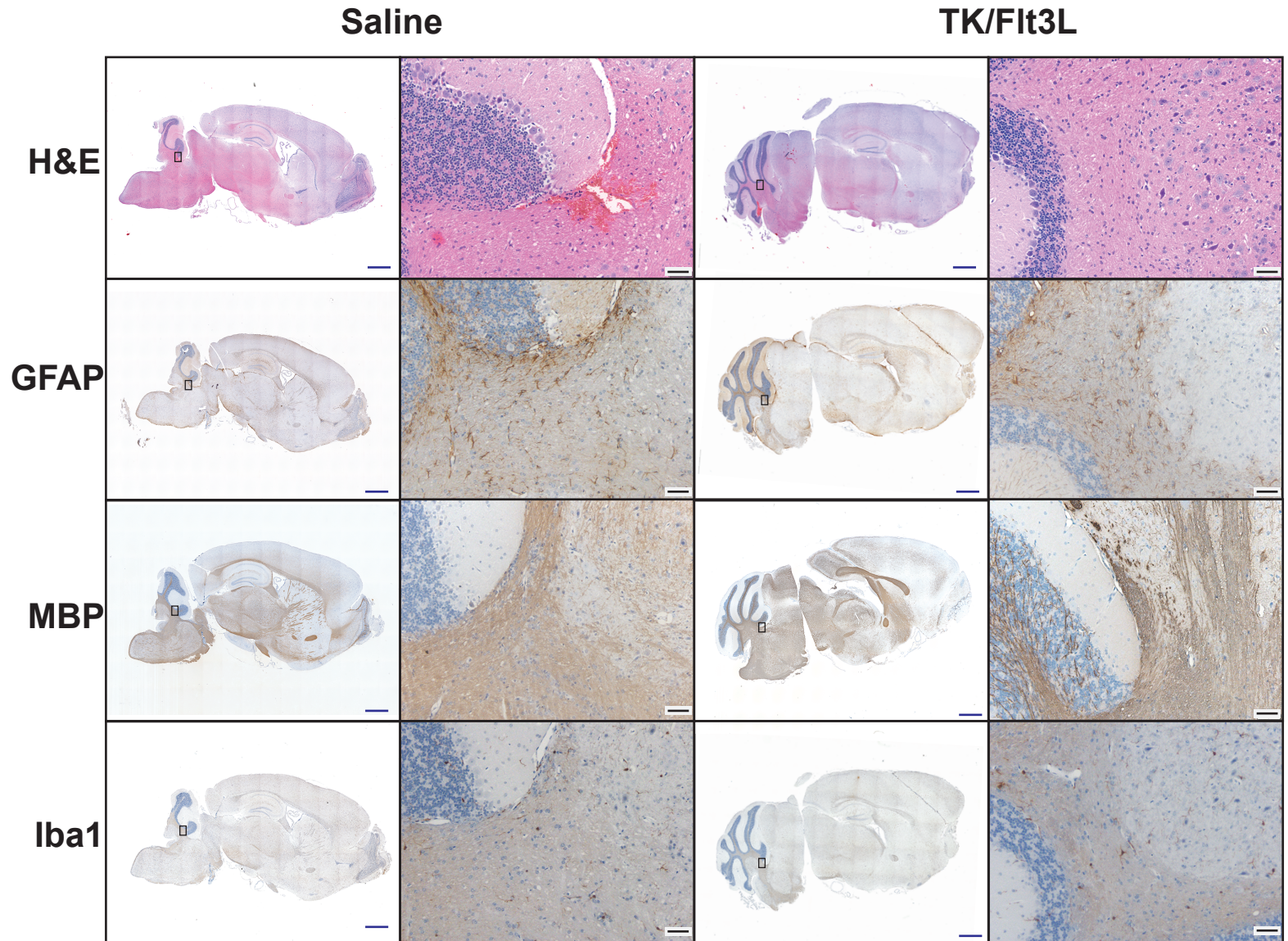


Supplementary Fig S7

Neuropathology Toxicity Assessment



Supplementary Figure S7: Local toxicity of adenoviral delivery of TK/Flt3L into normal brainstem. Mice were injected in the pons with Ad-TK and Ad-Flt3L, or saline. GCV was administered intraperitoneally 24 h post vector delivery for 7 days. 24 h after the last dose of GCV was administered neuropathological analysis of the brain was assessed by H&E staining and immunostaining for GFAP (astrocytes), MBP (myelin sheaths, oligodendrocytes), and Iba1 (microglia). Black box represents magnified area. Blue scale bar = 1 mm. Black scale bar = 50 μ m.