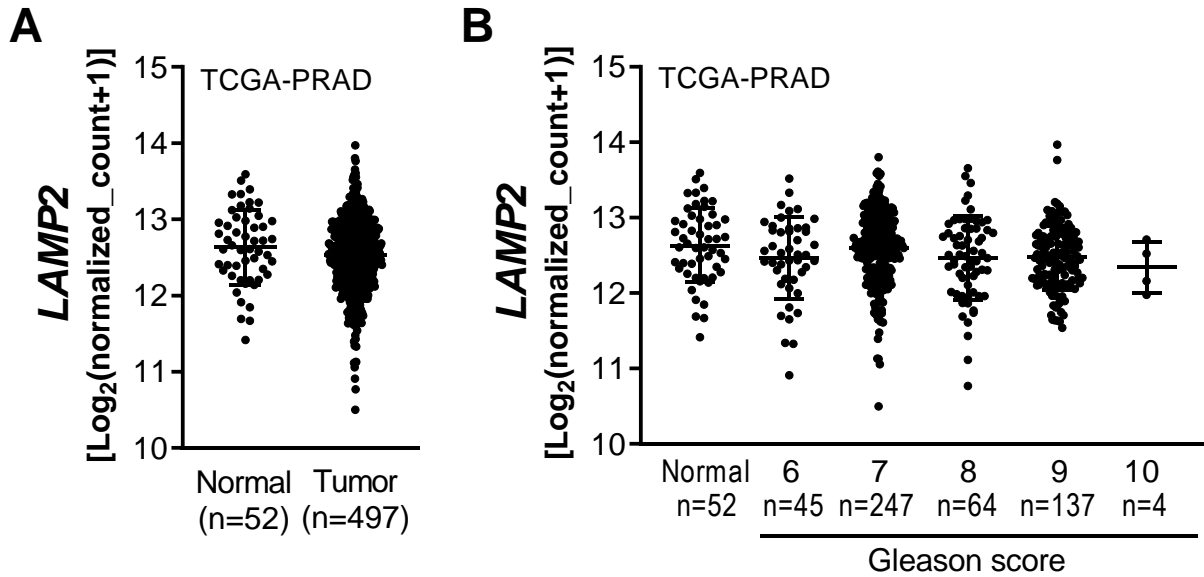
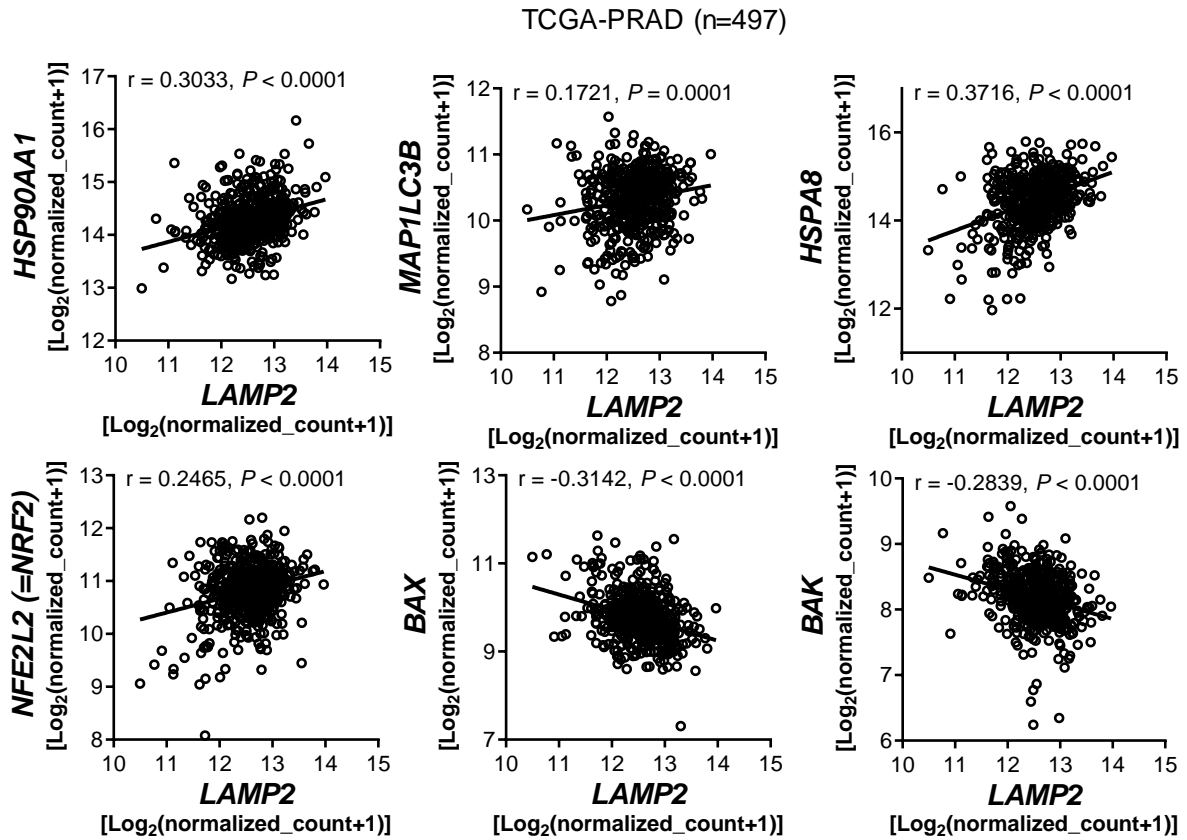


**Supplementary Figure S1.** *LAMP2* gene expression profile in prostate cancer TCGA. **A**, *LAMP2* expression in normal prostate vs. prostate cancer specimens from prostate cancer TCGA (n=52 for normal prostate and n=497 for prostate tumor specimens). **B**, Comparison of *LAMP2* expression in normal prostate vs. prostate cancer with different Gleason scores (n=52 for normal prostate, and n=45, n=247, n=64, n=137, and n=4 for Gleason score 6, 7, 8, 9, and 10, respectively).



**Supplementary Figure S2.** The Cancer Genome Atlas (TCGA) RNA-Seq data analysis for correlation between expression of *LAMP2* and genes affected by SFN treatment in PC-3 cells. Statistical significance of correlation was determined by the Pearson test.



**Supplementary Figure S3:** Immunoblotting for NRF2 and  $\beta$ -Actin proteins using lysates from PC-3 cells stably transfected with control shRNA or LAMP2-targeted shRNA and treated for 6 or 9 hours with DMSO (vehicle control) or 20  $\mu\text{mol/L}$  SFN. Numbers on top of the bands are fold changes in protein levels compared with control shRNA cells treated with DMSO. Experiment was done three times, and data from one such experiment are shown.

