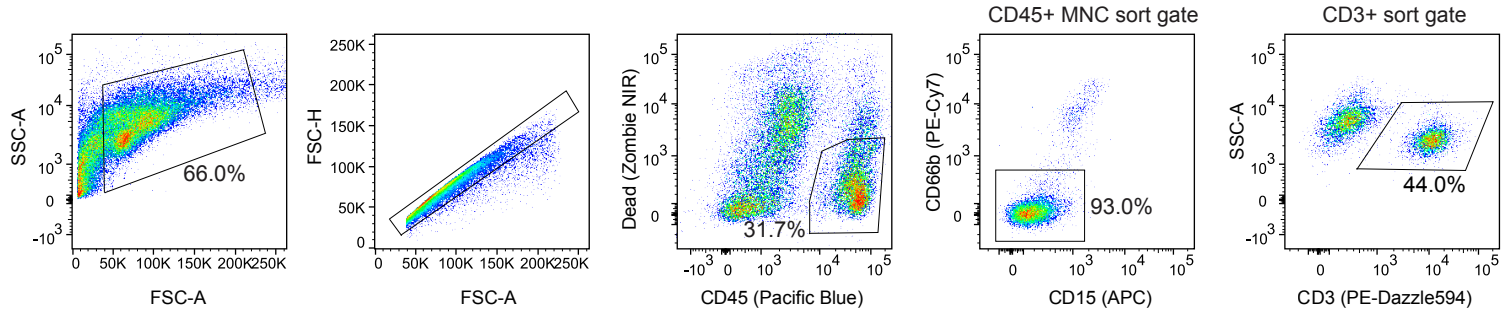
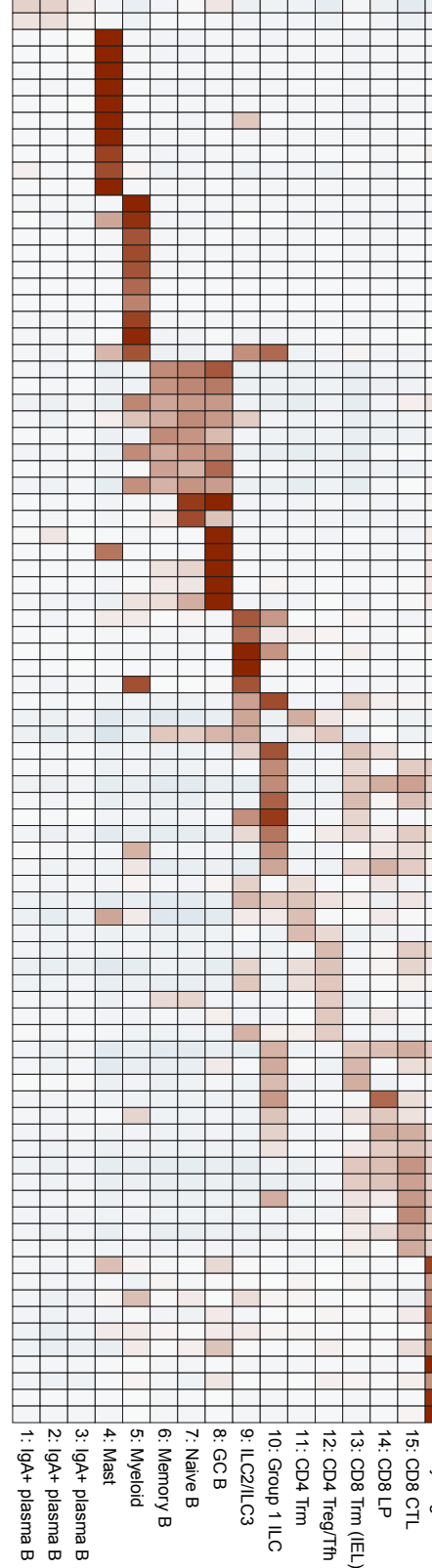


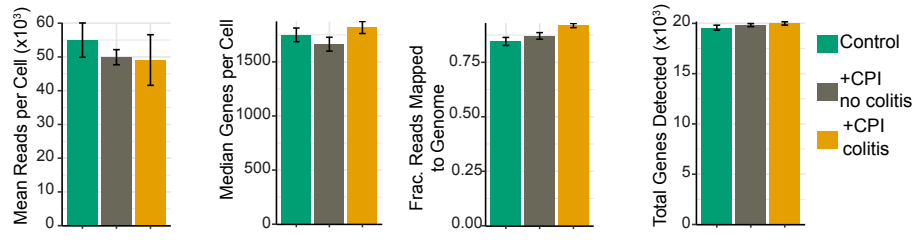
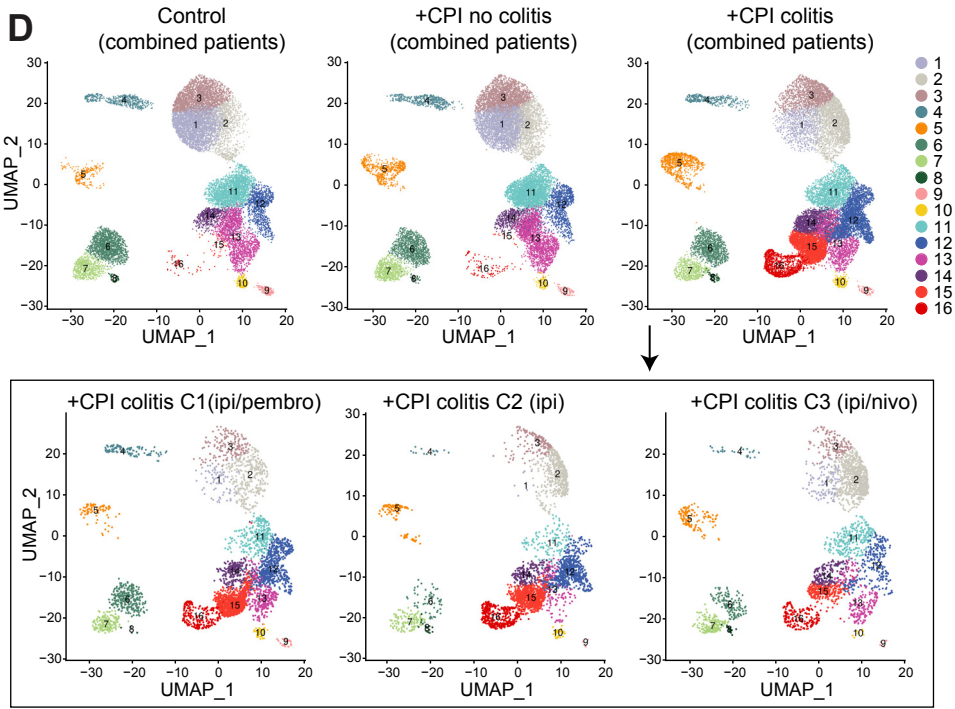
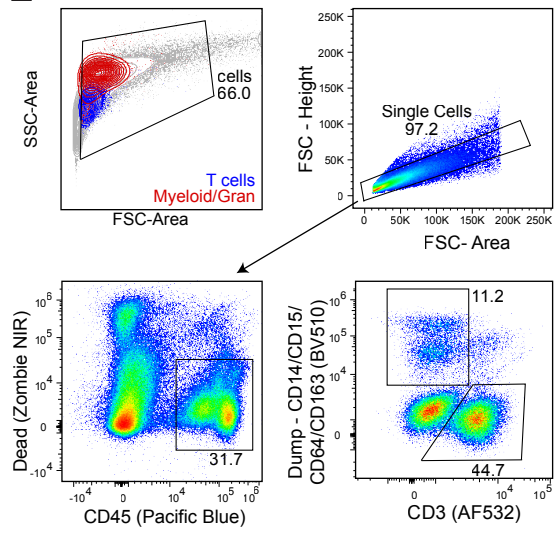
A**C**

4 2 0 -2 -4 CD45+ cells



- IGLL5
- IGLC2
- TPSAB1
- TPSB2
- CPA3
- CLU
- HPGDS
- VWA5A
- TPSD1
- HPGD
- CD9
- MS4A2
- LYZ
- CST3
- C1QC
- C1QA
- C1QB
- S100A9
- S100A8
- IL1B
- TYROBP
- MS4A1
- VPREB3
- HLA-DRA
- CD83
- BANK1
- HLA-DQA1
- SMIM14
- HLA-DQB1
- TCL1A
- FCER2
- MEF2B
- RGS13
- ELL3
- LRMP
- MARCKSL1
- AREG
- CSF2
- KRT86
- LINC00299
- LST1
- XCL1
- IL7R
- LTB
- XCL2
- GNLY
- NKG7
- KLRD1
- TRDC
- IL2RB
- CCL3
- CCL4
- TNF
- KLRB1
- ANXA1
- CD40LG
- CTLA4
- SPOCK2
- ICOS
- CCR7
- PASK
- TNFRSF4
- GZMA
- HOPX
- KIR2DL4
- GZMK
- CCL4L2
- GZMH
- IFNG
- CD8A
- CD8B
- GZMB
- LINC02446
- LAG3
- ZNF683
- STMN1
- HIST1H4C
- TUBA1B
- HMGB2
- TUBB
- HMGN2
- TYMS
- H2AFZ
- UBE2C
- MKI67

- 1: iGA+ plasma B
- 2: iGA+ plasma B
- 3: iGA+ plasma B
- 4: Mast
- 5: Myeloid
- 6: Memory B
- 7: Naive B
- 8: GC B
- 9: IL2/IL3
- 10: Group 1 ILC
- 11: CD4 Tm
- 12: CD4 Treg/Tth
- 13: CD8 Tm (IEL)
- 14: CD8 LP
- 15: CD8 CTL
- 16: Cycling T

B**D****E****F**