

Supplementary Table 1. qPCR primers used in the study

Genes	Primers	Sequences (5'- 3')
<i>MED13L</i>	Forward	AAATGGGACGCTAACAGG
	Reverse	CCGAACACCACCAACAAT
<i>SHOX</i>	Forward	GAGACCCATTACCCCGACG
	Reverse	ATTCTCTTGTTTGCGGCACTT
<i>PRKCA</i>	Forward	GTCCACAAGAGGTGCCATGAA
	Reverse	AAGGTGGGGCTTCCGTAAGT
<i>PAK4</i>	Forward	GGACATCAAGAGCGACTCGAT
	Reverse	CGACCAGCGACTTCCTTCG
<i>ARAF</i>	Forward	CCTGGCGTTCTGTGACTTCTG
	Reverse	CGGTTGGTACTCATGTCAACAC
<i>SOS2</i>	Forward	ATGTAGAGGAGCGAGTTCAGAA
	Reverse	ATGGTAGTCCACTTTGTACCCT
<i>AKT3</i>	Forward	AATGGACAGAAGCTATCCAGGC
	Reverse	TGATGGGTTGTAGAGGCATCC
<i>ACTIN</i>	Forward	GGCGGCACCACCATGTACCCT
	Reverse	AGGGGCCGGACTCGTCATACT

Supplementary Table 2. Demographic and clinical characteristics of stage III NSCLC patients from Jiangsu cohort

Parameter	Number of patients
Age (years)	70.1 (49.5-89.2)
Gender	
Male	65(60.2%)
Female	43 (39.8%)
Stage	
IIIA	51 (47.2%)
IIIB	57 (52.8%)
Histology	
Adeno	57 (52.8%)
SCC	48 (44.4%)
NSCLC-NOS	3 (2.8%)
KPS Score	80 (60-100)
PFS (months)	
Median	12.5
Event	75 (69.4%)
No event	33 (30.6%)
OS (months)	
Median	19.1
Event	59 (54.6%)
No event	49 (45.4%)

Note: NSCLC: non-small cell lung cancer; Adeno: adenocarcinoma; SCC: squamous cell carcinoma; NSCLC-NOS: NSCLC not otherwise specified; KPS: Karnofsky performance status; PFS: progression-free survival; OS: overall survival.

Supplementary Table 3. RNA oligos used in the study

RNA oligos	Sequences (5'- 3')
miR-4497 mimics	CUCCGGGACGGCUGGGC
miR-4497 inhibitors	GCCCAGCCGUCCCGGAG
<i>MED13L</i> siRNA-1	GCCAAAGACUGCCUCUCAUTT/ AUGAGAGGCAGUCUUUGGCTT
<i>MED13L</i> siRNA-2	GCACAAGCCCAUCUGCAAATT/ UUUGCAGAUGGGCUUGUGCTT

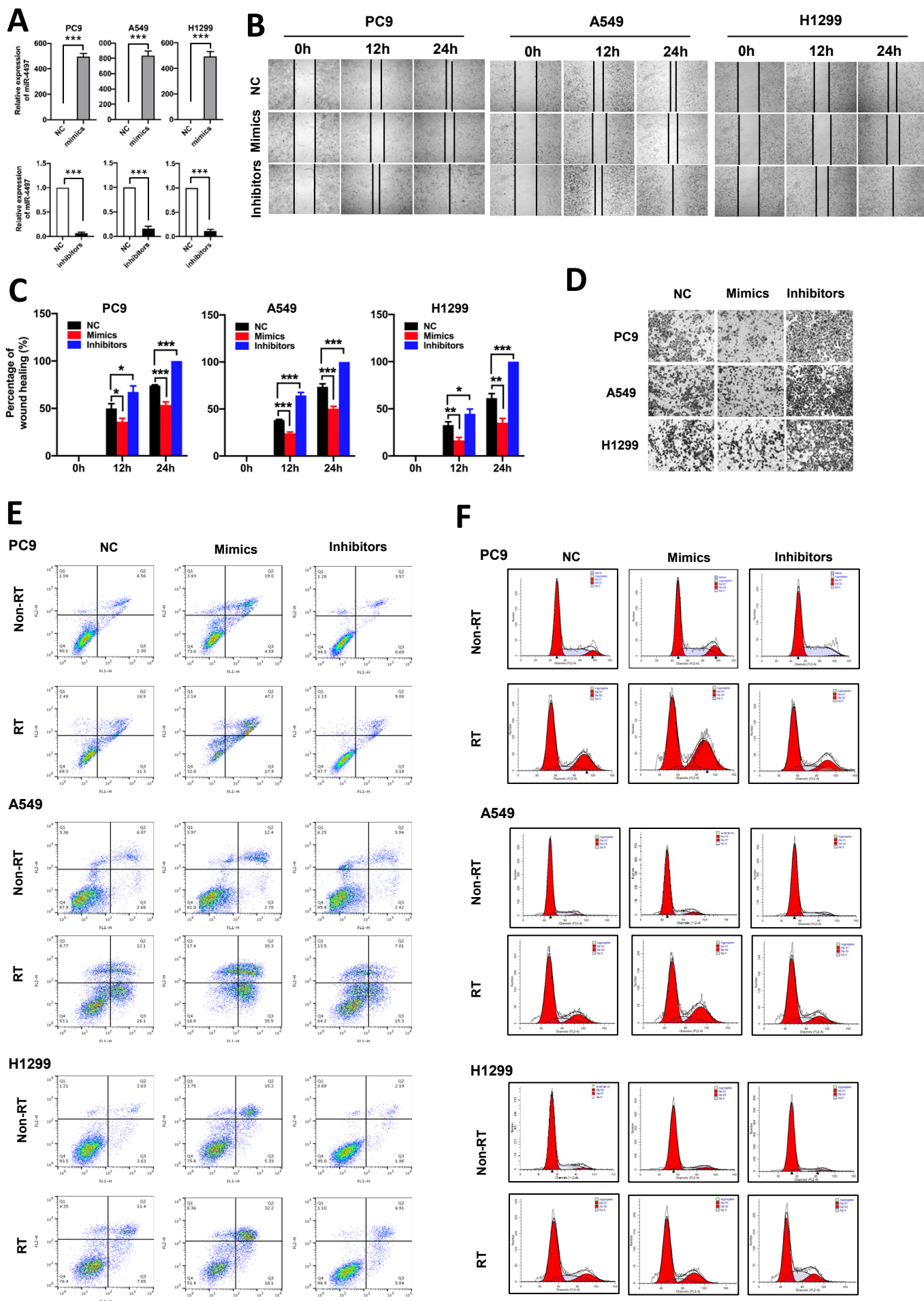
Supplementary Table 4. Primers for *MED13L* 3'-UTR reporter gene constructs

Primers	Sequences (5'-3')
MED13L-3'-UTR-F	CCGCTCGAGGTACCACCAGTTGAAGGG (XhoI)
MED13L-3'-UTR-R	CTAGAAGCTTATTGGGTTTCTAGGGAAG (HindIII)
Mutagenesis 3'-UTR-F	CTTTGGGGTTGCTTTTTTCCCGGAATTCATCAGAACTTTGA
Mutagenesis 3'-UTR-R	TCAAAGTTCTGATGAATTCCGGGAAAAAAGCAACCCCAAAG

Supplementary Table 5. P300 ChIP-qPCR primers in regions around *PRKCA*

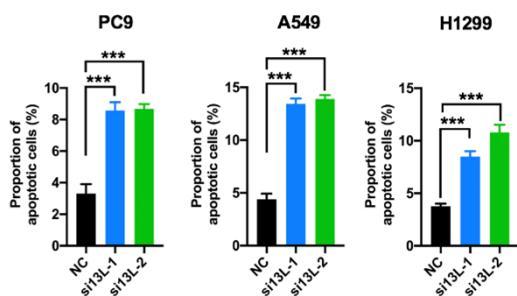
Gene region	Primers	Sequences (5' - 3')
<i>PRKCA</i> region 1	Forward	ACCTGGAAGCCTTGGAAC
	Reverse	AACTGCCGAAATGCGTAA
<i>PRKCA</i> region2	Forward	GGCGGCAAGAGCGGAAGAA
	Reverse	GTGCTGGGAACACTGGGCAAGG
<i>PRKCA</i> region 3	Forward	GGCAGGCGGATCACCTAA
	Reverse	CGGAATCTCGCTCTGTCTCAC
<i>PRKCA</i> region 4	Forward	GGGTATAGGGTGAGAAAGT
	Reverse	CTGGAGCATGATGATTGA
<i>PRKCA</i> region 5	Forward	ACTTCACCCACATGACTGT
	Reverse	ATCACCTCCTGCTTTCT
<i>PRKCA</i> region 6	Forward	GGTGAGATTACTGGGCTAC
	Reverse	GGTGTCTGGGAAGATAAAA

Supplementary Figure 1

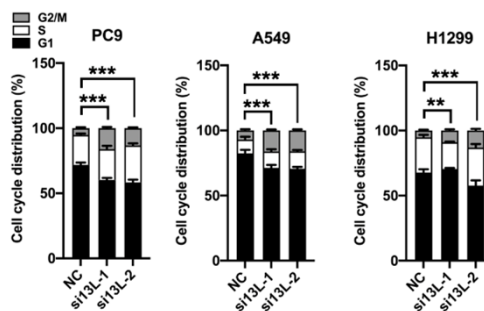


Supplementary Figure 2

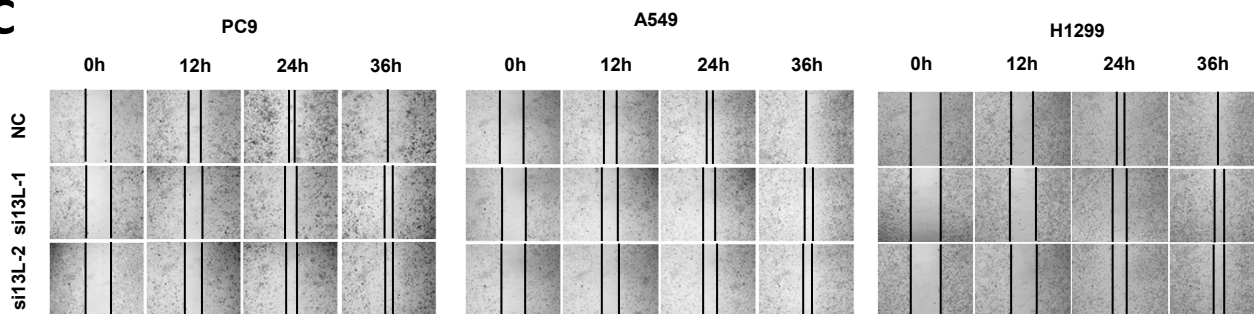
A



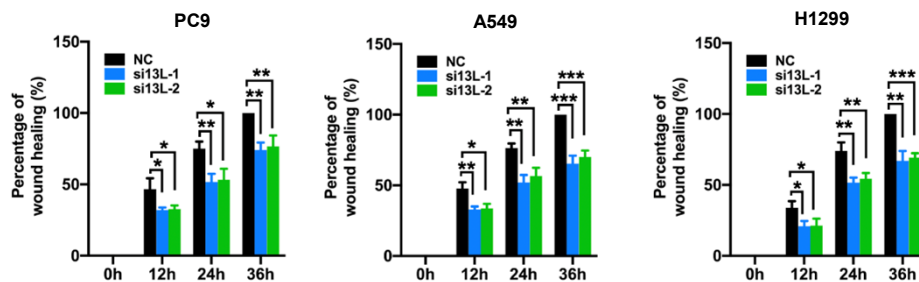
B



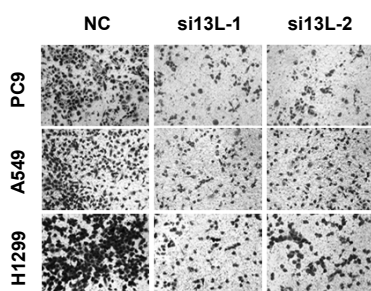
C



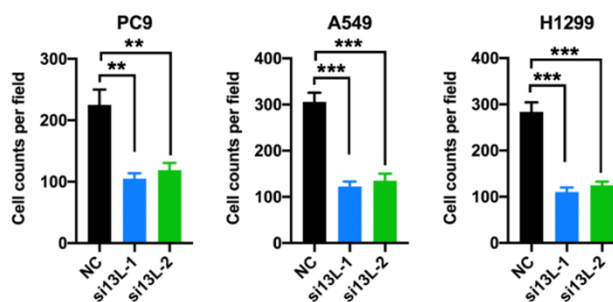
D



E

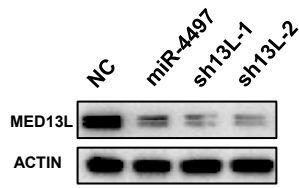
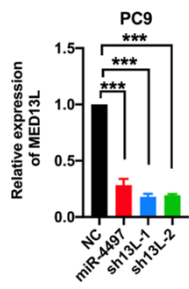


F

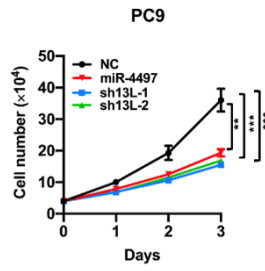


Supplementary Figure 3

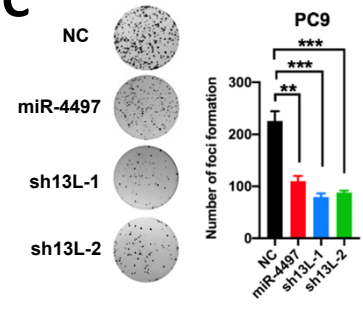
A



B



C



Supplementary Figure 4

