

Supplementary Figures

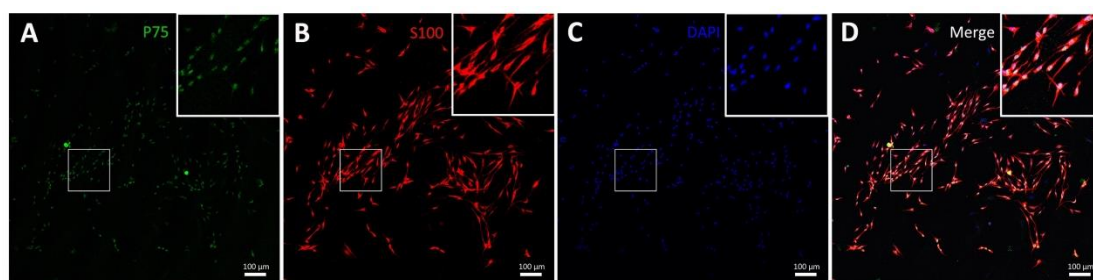


Figure S1: Characterization of primary SCs.

Double immunofluorescent staining showed the expression of p75 (A) and S100 (B) with DAPI nuclear counterstaining (C). Merge file (D).

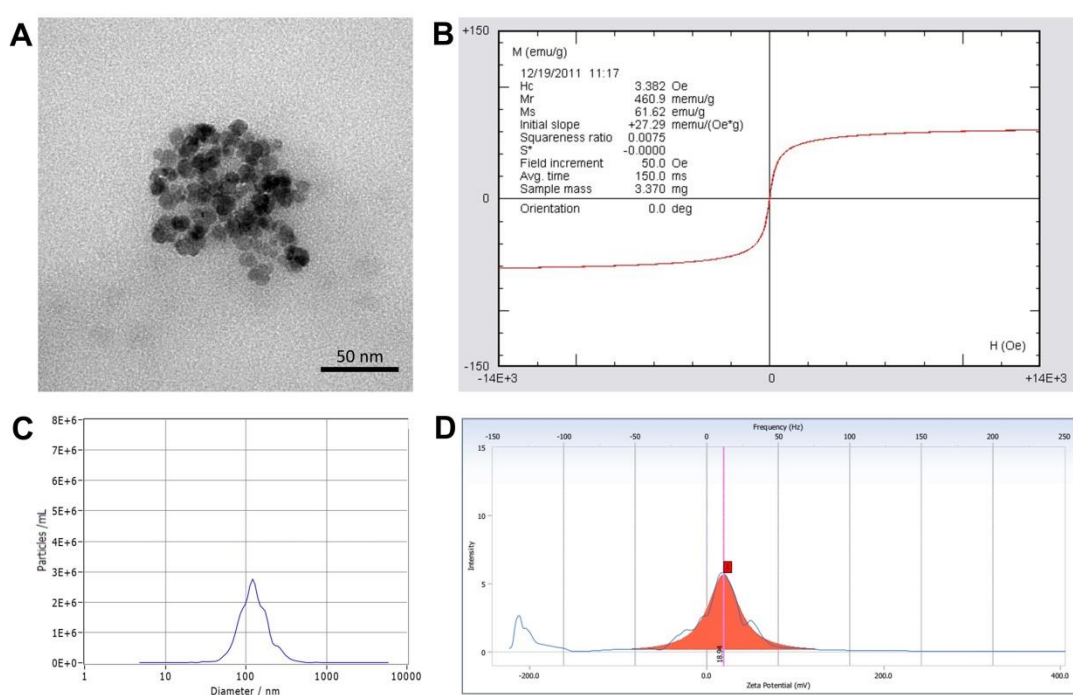


Figure S2: Characterization of SPIONs.

A: TEM analysis of SPIONs. B: Magnetization parameters of SPIONs. C: The overall distribution of SPIONs sizes. (D) The zeta potential of SPIONs.

Supplementary Table 1: siRNA sets used for knockdown Nrp1

siRNA	Location	Sense(5'-3')	Antisense(5'-3')
Nrp1-siRN A 1	Nrp1-rat-997	GCACCUACUGGAGUGAUAA TT	UUAUCACUCCAGUAGGUGC TT
Nrp1-siRN A 2	Nrp1-rat-156 6	GGGUGCCAUUCCAAGGAA TT	UCCCUUGGAAAUGGCACCCT T
Nrp1-siRN A 3	Nrp1-rat-322	CCUGGAGAACUAUAACUUU TT	AAAGUUAUAGUUCUCCAGG TT

Supplementary Table 2: Primer sets used for qRT-PCR

Primer	Sequence(5'-3')
Nrp1-Forward	GCGTGTCTTGCTGCACAAAT
Nrp1-Reverse	GGGTGCTCCCTGTTTCATCTAT
U6-Forward	CTCGCTTCGGCAGCACATATACT
U6- Reverse	ACGCTTCACGAATTTGCGTGTC
β -actin- Forward	TAGTTGCGTTACACCCTTTCTTG
β -actin- Reverse	TCACCTTCACCGTTCCAGTTT