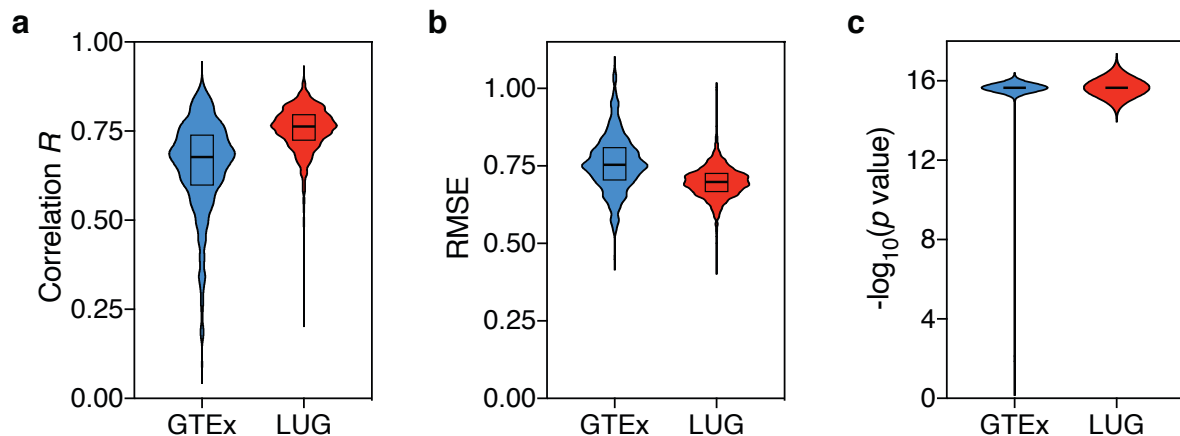


## Supplementary Information

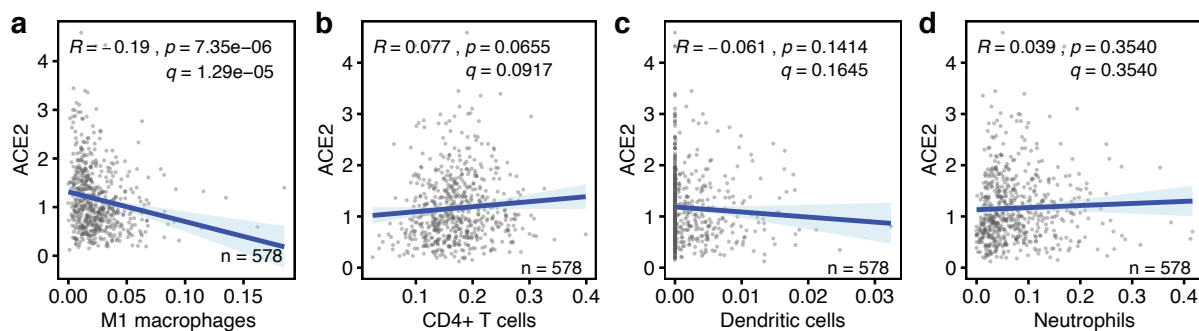
### Low baseline pulmonary levels of cytotoxic lymphocytes as a predisposing risk factor for severe COVID-19

Pascal H.G. Duijf



**Figure S1. *In silico* cytometry statistics.**

Per-sample statistics of *in silico* cytometry on human lung tissues are shown for the GTEx (n=578) and LUG (n=1,349) datasets. (a) Pearson correlation coefficients  $R$ . (b) Root mean square errors (RMSE). (c)  $p$  values.  $P$  values  $< 2.2 \times 10^{-16}$  were processed as equal to  $2.2 \times 10^{-16}$ . Source data are provided in Table S1.

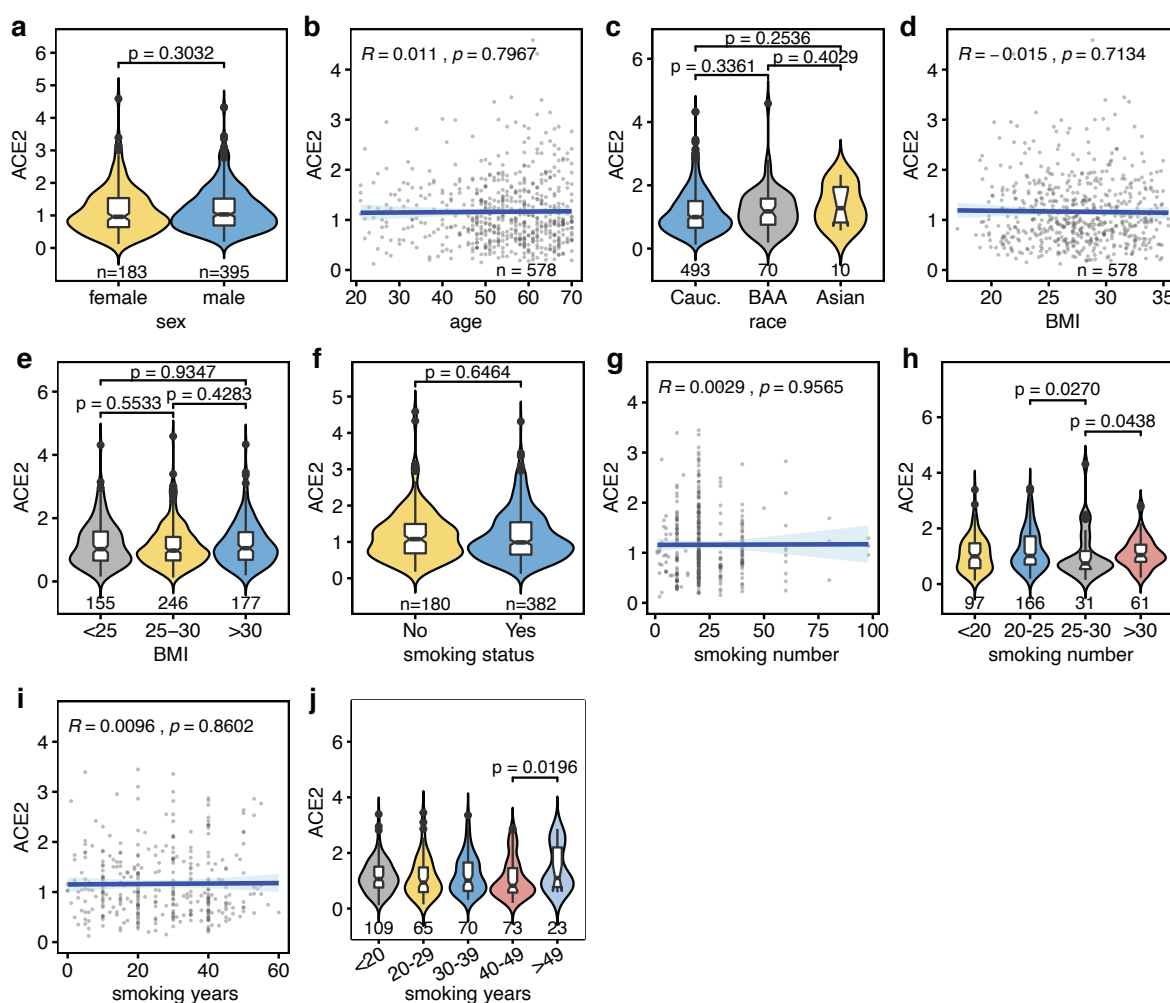
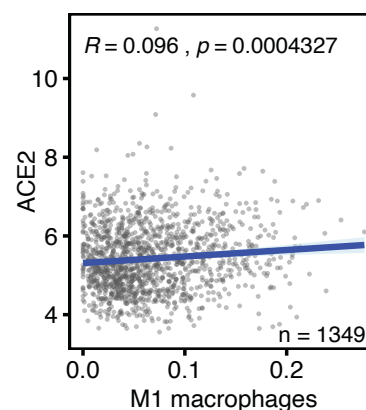


**Figure S2. Correlations between baseline anti-viral leukocyte levels and ACE2 expression levels in human lung tissues.**

(a-d) The correlations between the baseline levels of indicated immune cell types (x-axes) and the expression level of the SARS-CoV-2 host cell receptor ACE2 (y-axis) in human lung tissue are shown. Data are from the GTEx dataset (n=578). Regression lines and 95% confidence intervals are shown.  $R$  and  $p$  values: Pearson correlations;  $q$  values: Benjamini-Hochberg-adjusted  $p$  values using a false discovery rate of 0.05. See also Figure 1.

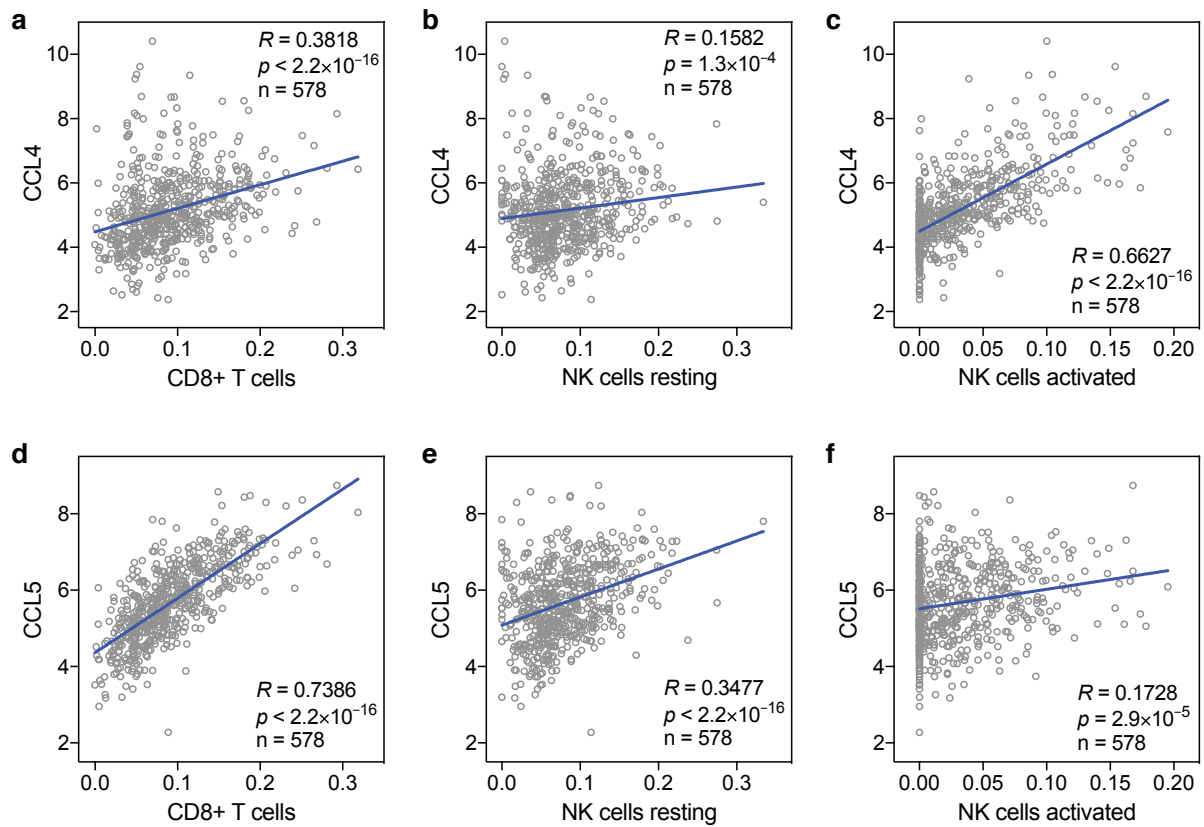
**Figure S3. Correlation between baseline M1 macrophage levels and ACE2 expression level in human lung tissue.**

The correlation between these variables is shown as described in Figure S2. Data are from the LUG dataset (n=1,349).



**Figure S4. Univariate analyses of phenotypic covariates included in multivariate analyses.**

Univariate analyses of five covariates that were included in multivariate analyses of ACE2 and TMPRSS2 expression in human lung tissue using the GTEx dataset (Tables S2, S3). **(a)** Sex. **(b)** Age, **(c)** Race. **(d, e)** Body mass index. **(f-j)** Smoking behavior, referring to smoking status (smoker/non-smoker) (f), number of units smoked during the smoke period (g, h) and number of years smoked (i, j). *P* values in categorical analyses: Mann-Whitney *U* tests. *R* and *p* values in continuous analyses: Pearson correlations. *P* values in panels h and j are only shown if  $p < 0.05$ . Sample numbers (n) are shown on the x-axes.



**Figure S5. Correlations between baseline levels of cytotoxic lymphocytes and CCL4 and CCL5 in human lung tissue.**

The correlations between baseline levels of the chemokines CCL4, CCL5 and CD8+ T cells, resting and activated NK cells in human lung tissue are shown. Data are from the GTEx dataset (n=578). *R* and *p* values: Spearman correlations. See also Figure 2g.

**Table S1. Source data of *in silico* cytometry statistics**

For each sample in the GTEX (n=578) and LUG (n=1,349) datasets, Pearson correlation coefficient *R*, root mean square error (RMSE) and  $-\log_{10}(p)$  value are shown. These are the source data of Figure S1.

Sam ple n	GTEX		GTEX - log <sub>10</sub> pval		LUG		LUG - log <sub>10</sub> pval	
	GTEX R	RMSE	GTEX R	pval	LUG R	RMSE	LUG R	pval
1	0.76787006	0.64982766	15.6575773	0.802959	0.649639	15.65758		
2	0.33960379	0.95534778	15.6575773	0.766379	0.707377	15.65758		
3	0.69311497	0.73304977	15.6575773	0.787641	0.676389	15.65758		
4	0.7996746	0.60995383	15.6575773	0.681417	0.76724	15.65758		
5	0.81489669	0.5873594	15.6575773	0.742665	0.717019	15.65758		
6	0.7328384	0.69463011	15.6575773	0.801268	0.654958	15.65758		
7	0.55167376	0.83420724	15.6575773	0.728905	0.715461	15.65758		
8	0.6898905	0.73547426	15.6575773	0.779413	0.697019	15.65758		
9	0.74337414	0.7268448	15.6575773	0.773965	0.690504	15.65758		
10	0.48677652	0.87413605	15.6575773	0.777735	0.69054	15.65758		
11	0.55088695	0.83618046	15.6575773	0.789392	0.682538	15.65758		
12	0.72198448	0.72751001	15.6575773	0.747533	0.711919	15.65758		
13	0.44847706	0.89376979	15.6575773	0.842775	0.586167	15.65758		
14	0.70299836	0.72682982	15.6575773	0.761953	0.700298	15.65758		
15	0.743309	0.70328228	15.6575773	0.753612	0.708944	15.65758		
16	0.62707528	0.79388999	15.6575773	0.804003	0.657556	15.65758		
17	0.65149292	0.77493294	15.6575773	0.810269	0.653416	15.65758		
18	0.71063774	0.74524749	15.6575773	0.771608	0.701303	15.65758		
19	0.61600528	0.8063179	15.6575773	0.797468	0.669538	15.65758		
20	0.53761731	0.84298471	15.6575773	0.757637	0.707872	15.65758		
21	0.61042154	0.79213496	15.6575773	0.706046	0.744027	15.65758		
22	0.76173265	0.68612869	15.6575773	0.757324	0.704732	15.65758		
23	0.5923411	0.81590966	15.6575773	0.788137	0.684214	15.65758		
24	0.57111551	0.82945874	15.6575773	0.758922	0.67449	15.65758		
25	0.70245483	0.74771223	15.6575773	0.800876	0.675024	15.65758		
26	0.71931585	0.70114944	15.6575773	0.748056	0.717971	15.65758		
27	0.67884846	0.74083394	15.6575773	0.739715	0.723634	15.65758		
28	0.7007555	0.72235034	15.6575773	0.780562	0.674622	15.65758		
29	0.72923843	0.71907274	15.6575773	0.782376	0.682771	15.65758		
30	0.55756861	0.82973695	15.6575773	0.726186	0.73166	15.65758		
31	0.62325326	0.79139104	15.6575773	0.813847	0.649338	15.65758		
32	0.63886768	0.77930902	15.6575773	0.805055	0.660688	15.65758		
33	0.44888773	0.89528101	15.6575773	0.736178	0.715388	15.65758		
34	0.68212751	0.74938995	15.6575773	0.811061	0.663174	15.65758		
35	0.73205242	0.68283704	15.6575773	0.68782	0.758606	15.65758		
36	0.68262106	0.75168703	15.6575773	0.819304	0.652341	15.65758		
37	0.48008816	0.88349271	15.6575773	0.762902	0.701996	15.65758		
38	0.45440411	0.89026941	15.6575773	0.685527	0.761058	15.65758		
39	0.60434542	0.79776549	15.6575773	0.768102	0.690433	15.65758		
40	0.82054193	0.57404279	15.6575773	0.835847	0.617019	15.65758		
41	0.69813151	0.75070076	15.6575773	0.835447	0.633442	15.65758		
42	0.62125354	0.78878221	15.6575773	0.774305	0.690438	15.65758		
43	0.75157392	0.68798327	15.6575773	0.821192	0.634717	15.65758		
44	0.38777408	0.92960941	15.6575773	0.736161	0.721822	15.65758		
45	0.82524164	0.63701517	15.6575773	0.774914	0.694771	15.65758		
46	0.51701022	0.86026052	15.6575773	0.817019	0.65777	15.65758		
47	0.56007914	0.83677468	15.6575773	0.8374	0.597228	15.65758		
48	0.71308175	0.70717759	15.6575773	0.763472	0.70808	15.65758		
49	0.62706859	0.79677808	15.6575773	0.723793	0.732254	15.65758		
50	0.71172223	0.74130879	15.6575773	0.840075	0.586469	15.65758		
51	0.77950068	0.64522993	15.6575773	0.780776	0.690774	15.65758		
52	0.68360264	0.74101263	15.6575773	0.781202	0.687471	15.65758		
53	0.84172362	0.62704355	15.6575773	0.784475	0.654003	15.65758		
54	0.31660463	0.95729498	15.6575773	0.796829	0.669062	15.65758		
55	0.68785982	0.75314287	15.6575773	0.700059	0.745584	15.65758		
56	0.70464449	0.74925695	15.6575773	0.795957	0.679328	15.65758		
57	0.70970752	0.74479217	15.6575773	0.823785	0.631725	15.65758		
58	0.62238904	0.79602679	15.6575773	0.793232	0.683047	15.65758		
59	0.52698581	0.84930394	15.6575773	0.819992	0.644026	15.65758		
60	0.73123587	0.70101211	15.6575773	0.749767	0.699034	15.65758		
61	0.7674915	0.70041919	15.6575773	0.727959	0.726717	15.65758		
62	0.62789934	0.78044364	15.6575773	0.770688	0.703886	15.65758		
63	0.60410025	0.80136883	15.6575773	0.737926	0.714894	15.65758		
64	0.57227658	0.82550032	15.6575773	0.749034	0.706154	15.65758		
65	0.76991092	0.65403992	15.6575773	0.746872	0.711799	15.65758		
66	0.68588497	0.73930282	15.6575773	0.742272	0.717509	15.65758		
67	0.60545218	0.80540731	15.6575773	0.693004	0.74553	15.65758		
68	0.72715468	0.70593705	15.6575773	0.725727	0.725521	15.65758		
69	0.82942443	0.63454869	15.6575773	0.805247	0.660876	15.65758		
70	0.71425946	0.7176295	15.6575773	0.825733	0.620069	15.65758		
71	0.77765493	0.66701741	15.6575773	0.766407	0.69845	15.65758		
72	0.70485216	0.71288925	15.6575773	0.738098	0.727688	15.65758		
73	0.70049108	0.72082562	15.6575773	0.761357	0.701782	15.65758		
74	0.49294211	0.87118578	15.6575773	0.772676	0.688762	15.65758		
75	0.74102721	0.69347067	15.6575773	0.738963	0.717142	15.65758		
76	0.68292334	0.74742974	15.6575773	0.820638	0.654015	15.65758		
77	0.68202831	0.74271381	15.6575773	0.804679	0.677565	15.65758		
78	0.66058818	0.77004578	15.6575773	0.814325	0.667653	15.65758		
79	0.61258367	0.7911726	15.6575773	0.715896	0.727023	15.65758		
80	0.66021942	0.76245576	15.6575773	0.757175	0.711845	15.65758		
81	0.73545094	0.70171276	15.6575773	0.745553	0.71137	15.65758		
82	0.76539688	0.70190687	15.6575773	0.812	0.653151	15.65758		
83	0.52249671	0.85192189	15.6575773	0.747185	0.716424	15.65758		
84	0.50301948	0.86526106	15.6575773	0.803403	0.669913	15.65758		
85	0.51410756	0.85722208	15.6575773	0.789727	0.672406	15.65758		
86	0.54248051	0.84295889	15.6575773	0.672214	0.76654	15.65758		
87	0.54325456	0.83888963	15.6575773	0.705861	0.743058	15.65758		
88	0.67174415	0.7604468	15.6575773	0.704747	0.743665	15.65758		
89	0.19835402	1.04850401	2	0.804903	0.650558	15.65758		
90	0.80546361	0.6228925	15.6575773	0.774205	0.670835	15.65758		
91	0.77078186	0.66191298	15.6575773	0.733251	0.716882	15.65758		
92	0.61667107	0.80159867	15.6575773	0.756188	0.711612	15.65758		
93	0.6965581	0.72055837	15.6575773	0.799211	0.669125	15.65758		
94	0.72414493	0.69095633	15.6575773	0.775547	0.686414	15.65758		
95	0.56751768	0.82297723	15.6575773	0.771394	0.687734	15.65758		
96	0.68384218	0.7419826	15.6575773	0.722536	0.694775	15.65758		
97	0.55867087	0.83016121	15.6575773	0.739445	0.719632	15.65758		
98	0.59189641	0.80927822	15.6575773	0.731612	0.725989	15.65758		
99	0.66689221	0.74551067	15.6575773	0.762586	0.705917	15.65758		
100	0.76408857	0.68936908	15.6575773	0.755818	0.682473	15.65758		
101	0.78195749	0.65704796	15.6575773	0.781971	0.6349	15.65758		
102	0.62157124	0.79616277	15.6575773	0.782796	0.679205	15.65758		
103	0.69262931	0.73158418	15.6575773	0.711814	0.741561	15.65758		
104	0.35999342	0.93722591	15.6575773	0.830347	0.667358	15.65758		
105	0.57105776	0.82676047	15.6575773	0.742403	0.721198	15.65758		
106	0.61157077	0.79751651	15.6575773	0.8256	0.632411	15.65758		
107	0.62836027	0.78725474	15.6575773	0.723734	0.72605	15.65758		
108	0.63730953	0.77172128	15.6575773	0.676773	0.758942	15.65758		
109	0.55034452	0.8364782	15.6575773	0.788154	0.685592	15.65758		
110	0.58071617	0.81963676	15.6575773	0.841142	0.578848	15.65758		
111	0.64288144	0.76919284	15.6575773	0.747221	0.712274	15.65758		
112	0.76962275	0.6741102	15.6575773	0.779528	0.681984	15.65758		
113	0.74316718	0.6962846	15.6575773	0.815183	0.62824	15.65758		
114	0.74932054	0.7188616	15.6575773	0.7221	0.740452	15.65758		
115	0.70768548	0.7150471	15.6575773	0.741992	0.71447	15.65758		
116	0.64318529	0.77146204	15.6575773	0.747199	0.711697	15.65758		

193	0.72599161	0.74095472	15.6575773	0.7571	0.715478	15.65758
194	0.66043078	0.75926202	15.6575773	0.75468	0.709712	15.65758
195	0.56001772	0.83338094	15.6575773	0.716521	0.732976	15.65758
196	0.81838675	0.60658809	15.6575773	0.821864	0.636654	15.65758
197	0.77302519	0.63590636	15.6575773	0.647836	0.784919	15.65758
198	0.54390926	0.84098442	15.6575773	0.747368	0.708886	15.65758
199	0.67961129	0.75558107	15.6575773	0.763616	0.689703	15.65758
200	0.60649215	0.7960565	15.6575773	0.812353	0.6419	15.65758
201	0.48456997	0.87433601	15.6575773	0.79388	0.651875	15.65758
202	0.81596176	0.64460334	15.6575773	0.761849	0.690674	15.65758
203	0.74966186	0.66777995	15.6575773	0.781606	0.663368	15.65758
204	0.75464334	0.65831696	15.6575773	0.821076	0.660814	15.65758
205	0.74968041	0.72670082	15.6575773	0.796044	0.666209	15.65758
206	0.81399703	0.58351606	15.6575773	0.791838	0.680987	15.65758
207	0.68506628	0.75996461	15.6575773	0.789881	0.689701	15.65758
208	0.6360702	0.78975549	15.6575773	0.809869	0.647442	15.65758
209	0.58242464	0.81682636	15.6575773	0.724377	0.731891	15.65758
210	0.68684771	0.75712965	15.6575773	0.804232	0.670361	15.65758
211	0.75432658	0.70731847	15.6575773	0.772383	0.700347	15.65758
212	0.74763336	0.70352207	15.6575773	0.79732	0.668725	15.65758
213	0.7345029	0.6906848	15.6575773	0.820374	0.643138	15.65758
214	0.38555341	0.92473625	15.6575773	0.786387	0.671845	15.65758
215	0.66480243	0.77317655	15.6575773	0.722954	0.725167	15.65758
216	0.53238055	0.8501063	15.6575773	0.661335	0.76966	15.65758
217	0.49614753	0.87117367	15.6575773	0.747917	0.713147	15.65758
218	0.62848809	0.78155805	15.6575773	0.754777	0.713618	15.65758
219	0.34756065	0.9461676	15.6575773	0.812003	0.672584	15.65758
220	0.71911963	0.70564645	15.6575773	0.752694	0.706264	15.65758
221	0.59834917	0.81128019	15.6575773	0.790308	0.685963	15.65758
222	0.47498616	0.87943216	15.6575773	0.836905	0.637796	15.65758
223	0.60689839	0.79634132	15.6575773	0.799052	0.669879	15.65758
224	0.50019681	0.86724432	15.6575773	0.793398	0.663917	15.65758
225	0.62729209	0.79058412	15.6575773	0.781364	0.688733	15.65758
226	0.46225126	0.88865426	15.6575773	0.780071	0.690821	15.65758
227	0.67231135	0.76832341	15.6575773	0.787926	0.675839	15.65758
228	0.64748332	0.76768051	15.6575773	0.82181	0.631713	15.65758
229	0.62251406	0.78420097	15.6575773	0.843974	0.604237	15.65758
230	0.8183653	0.67757687	15.6575773	0.731429	0.728452	15.65758
231	0.75270747	0.71496551	15.6575773	0.763006	0.705997	15.65758
232	0.6068207	0.79963664	15.6575773	0.74788	0.711903	15.65758
233	0.58879924	0.8080764	15.6575773	0.750129	0.707874	15.65758
234	0.19851404	1.02630196	2	0.796418	0.649542	15.65758
235	0.71390061	0.74582221	15.6575773	0.719688	0.729439	15.65758
236	0.76283788	0.68148595	15.6575773	0.76701	0.698827	15.65758
237	0.60732441	0.79707316	15.6575773	0.557045	0.836521	15.65758
238	0.54137454	0.84031461	15.6575773	0.786279	0.675397	15.65758
239	0.57237844	0.82061417	15.6575773	0.772489	0.694027	15.65758
240	0.89292037	0.45411744	15.6575773	0.791821	0.645896	15.65758
241	0.65583111	0.75916878	15.6575773	0.725282	0.728549	15.65758
242	0.774149	0.70954979	15.6575773	0.835758	0.615321	15.65758
243	0.67806547	0.76133731	15.6575773	0.749561	0.716408	15.65758
244	0.49364517	0.86885487	15.6575773	0.667615	0.773075	15.65758
245	0.536933	0.84322847	15.6575773	0.765581	0.683119	15.65758
246	0.70872418	0.7076122	15.6575773	0.734532	0.72122	15.65758
247	0.77589014	0.67296294	15.6575773	0.674216	0.766718	15.65758
248	0.80072619	0.61393943	15.6575773	0.803479	0.666537	15.65758
249	0.65988256	0.77526385	15.6575773	0.787501	0.678435	15.65758
250	0.68068467	0.74091501	15.6575773	0.76172	0.703398	15.65758
251	0.73244551	0.70928926	15.6575773	0.795979	0.678793	15.65758
252	0.75354693	0.67422913	15.6575773	0.776025	0.688462	15.65758
253	0.63254677	0.79478404	15.6575773	0.798442	0.680254	15.65758
254	0.6153526	0.79113624	15.6575773	0.738534	0.71802	15.65758
255	0.56034604	0.82753621	15.6575773	0.787161	0.676819	15.65758
256	0.77369824	0.65969904	15.6575773	0.744086	0.717224	15.65758
257	0.85411372	0.56176758	15.6575773	0.786093	0.66527	15.65758
258	0.57687458	0.81685974	15.6575773	0.801868	0.644505	15.65758
259	0.69854543	0.73007923	15.6575773	0.735325	0.72027	15.65758
260	0.26945451	0.97889818	15.6575773	0.820929	0.652595	15.65758
261	0.84318789	0.58198357	15.6575773	0.742597	0.714365	15.65758
262	0.69618896	0.75954336	15.6575773	0.81396	0.632136	15.65758
263	0.44164111	0.89711777	15.6575773	0.825774	0.638587	15.65758
264	0.63749278	0.78479043	15.6575773	0.705999	0.744879	15.65758
265	0.86949088	0.57450335	15.6575773	0.817806	0.658609	15.65758
266	0.8281639	0.5636942	15.6575773	0.768556	0.680677	15.65758
267	0.66002965	0.75860091	15.6575773	0.849624	0.608813	15.65758
268	0.75685307	0.71151029	15.6575773	0.737617	0.723191	15.65758
269	0.57332907	0.82288263	15.6575773	0.710483	0.723503	15.65758
270	0.84539899	0.59464806	15.6575773	0.784225	0.68118	15.65758
271	0.76104507	0.65077789	15.6575773	0.728	0.728922	15.65758
272	0.6640011	0.76063509	15.6575773	0.740465	0.716417	15.65758
273	0.66142851	0.75573128	15.6575773	0.792563	0.679757	15.65758
274	0.09561775	1.06392067	0.92081875	0.804311	0.656906	15.65758
275	0.59691428	0.81195173	15.6575773	0.764963	0.695617	15.65758
276	0.66214351	0.77044357	15.6575773	0.796255	0.672442	15.65758
277	0.77865783	0.65298519	15.6575773	0.827325	0.657303	15.65758
278	0.54618294	0.84078972	15.6575773	0.662821	0.768781	15.65758
279	0.6933973	0.73413878	15.6575773	0.762835	0.700561	15.65758
280	0.68076046	0.7351417	15.6575773	0.751751	0.695009	15.65758
281	0.64173496	0.7808481	15.6575773	0.738474	0.711002	15.65758
282	0.62576569	0.80111043	15.6575773	0.816107	0.653223	15.65758
283	0.7198404	0.69761934	15.6575773	0.775223	0.682029	15.65758
284	0.55056818	0.83413069	15.6575773	0.836076	0.628891	15.65758
285	0.70713266	0.71949422	15.6575773	0.751681	0.701574	15.65758
286	0.42489912	0.90477606	15.6575773	0.783174	0.692962	15.65758
287	0.731716	0.71285487	15.6575773	0.768599	0.690812	15.65758
288	0.81458549	0.62653519	15.6575773	0.741483	0.706972	15.65758
289	0.66883619	0.74993247	15.6575773	0.779969	0.693146	15.65758
290	0.59842802	0.80157266	15.6575773	0.68451	0.759285	15.65758
291	0.65410643	0.77468509	15.6575773	0.818814	0.645443	15.65758
292	0.71982128	0.70302377	15.6575773	0.748352	0.713861	15.65758
293	0.84054467	0.58340764	15.6575773	0.772643	0.689538	15.65758
294	0.65200613	0.78014444	15.6575773	0.682554	0.758181	15.65758
295	0.43740953	0.8993488	15.6575773	0.764508	0.673325	15.65758

296	0.69769203	0.74067558	15.6575773	0.73447	0.722677	15.65758
297	0.62942763	0.79526233	15.6575773	0.704265	0.722765	15.65758
298	0.34273059	0.95188053	15.6575773	0.757274	0.714485	15.65758
299	0.86048091	0.54256793	15.6575773	0.841756	0.592278	15.65758
300	0.61614358	0.79170506	15.6575773	0.800507	0.654171	15.65758
301	0.67335919	0.75445336	15.6575773	0.770732	0.701699	15.65758
302	0.35345743	0.94275013	15.6575773	0.678785	0.698409	15.65758
303	0.71042911	0.74494089	15.6575773	0.767138	0.701982	15.65758
304	0.8477898	0.53334989	15.6575773	0.864484	0.58774	15.65758
305	0.67903314	0.73579422	15.6575773	0.731853	0.725057	15.65758
306	0.63507411	0.79044464	15.6575773	0.737426	0.715749	15.65758
307	0.64005978	0.78176292	15.6575773	0.77896	0.686587	15.65758
308	0.66719365	0.75715937	15.6575773	0.671694	0.759826	15.65758
309	0.68957512	0.75765528	15.6575773	0.765302	0.716508	15.65758
310	0.48493149	0.88565917	15.6575773	0.756836	0.700051	15.65758
311	0.39856453	0.92223475	15.6575773	0.758049	0.707652	15.65758
312	0.78137492	0.66483924	15.6575773	0.790423	0.68897	15.65758
313	0.78942621	0.64359881	15.6575773	0.814714	0.667971	15.65758
314	0.76627041	0.66710032	15.6575773	0.824011	0.654317	15.65758
315	0.825058	0.58586794	15.6575773	0.811953	0.63457	15.65758
316	0.69565437	0.72924025	15.6575773	0.736519	0.721321	15.65758
317	0.61540866	0.79928767	15.6575773	0.817248	0.628069	15.65758
318	0.67771209	0.75088031	15.6575773	0.70467	0.746934	15.65758
319	0.52363313	0.85124364	15.6575773	0.75058	0.71488	15.65758
320	0.87085539	0.54369011	15.6575773			

399	0.75380773	0.69201404	15.657573	0.754296	0.710553	15.657578
400	0.70056472	0.73641256	15.657573	0.828156	0.62062	15.657578
401	0.30317843	0.97100511	15.657573	0.744932	0.720282	15.657578
402	0.42704837	0.90400651	15.657573	0.760689	0.697853	15.657578
403	0.73250295	0.68569706	15.657573	0.743454	0.716956	15.657578
404	0.63998157	0.77148253	15.657573	0.797208	0.674443	15.657578
405	0.18982386	1.02679717	2	0.803261	0.64979	15.657578
406	0.83707936	0.55007538	15.657573	0.767848	0.693432	15.657578
407	0.74339517	0.67975992	15.657573	0.833875	0.634358	15.657578
408	0.74793287	0.67889893	15.657573	0.820188	0.623863	15.657578
409	0.70750911	0.71679886	15.657573	0.824295	0.654846	15.657578
410	0.77867297	0.67583158	15.657573	0.700145	0.749118	15.657578
411	0.69289092	0.7567346	15.657573	0.787082	0.681237	15.657578
412	0.83317722	0.56288769	15.657573	0.789655	0.679567	15.657578
413	0.70542758	0.74607318	15.657573	0.818843	0.651949	15.657578
414	0.60418303	0.81035751	15.657573	0.788503	0.683418	15.657578
415	0.77263732	0.68624395	15.657573	0.749337	0.713422	15.657578
416	0.77999501	0.64430522	15.657573	0.857768	0.596827	15.657578
417	0.65819066	0.76349394	15.657573	0.721292	0.738618	15.657578
418	0.84534771	0.61412027	15.657573	0.742444	0.719647	15.657578
419	0.72107122	0.74360552	15.657573	0.756215	0.697051	15.657578
420	0.69186243	0.76327487	15.657573	0.823636	0.661281	15.657578
421	0.67704186	0.7557326	15.657573	0.824067	0.644177	15.657578
422	0.61801931	0.79213051	15.657573	0.838228	0.606988	15.657578
423	0.39774019	0.92016505	15.657573	0.826148	0.66437	15.657578
424	0.66275127	0.76451426	15.657573	0.764849	0.688124	15.657578
425	0.86750801	0.54605993	15.657573	0.750045	0.692775	15.657578
426	0.65224792	0.76255366	15.657573	0.71395	0.738439	15.657578
427	0.70968908	0.70488503	15.657573	0.812222	0.649952	15.657578
428	0.8144281	0.61899063	15.657573	0.794581	0.670675	15.657578
429	0.55162367	0.8352793	15.657573	0.711564	0.739971	15.657578
430	0.81451033	0.65313459	15.657573	0.774304	0.687878	15.657578
431	0.64322032	0.76959099	15.657573	0.815513	0.651896	15.657578
432	0.76139424	0.65253894	15.657573	0.699841	0.747594	15.657578
433	0.70921862	0.72550022	15.657573	0.811825	0.637925	15.657578
434	0.57747588	0.82639924	15.657573	0.759339	0.701199	15.657578
435	0.71591986	0.72409077	15.657573	0.72731	0.729214	15.657578
436	0.47779155	0.880142	15.657573	0.834849	0.618359	15.657578
437	0.49645427	0.86737501	15.657573	0.791193	0.687659	15.657578
438	0.57743264	0.82305894	15.657573	0.640255	0.78536	15.657578
439	0.72408992	0.73562376	15.657573	0.747989	0.71532	15.657578
440	0.65438578	0.76223506	15.657573	0.775596	0.682084	15.657578
441	0.77561601	0.673137	15.657573	0.664528	0.77254	15.657578
442	0.65915061	0.75561091	15.657573	0.744109	0.702744	15.657578
443	0.64163782	0.78081529	15.657573	0.823738	0.662318	15.657578
444	0.63293546	0.78185073	15.657573	0.728052	0.732315	15.657578
445	0.47748474	0.87907839	15.657573	0.704574	0.745085	15.657578
446	0.79135335	0.64989083	15.657573	0.723887	0.731429	15.657578
447	0.78444278	0.66513336	15.657573	0.794666	0.671867	15.657578
448	0.66124032	0.75088453	15.657573	0.836126	0.613719	15.657578
449	0.84725654	0.57327395	15.657573	0.755826	0.700347	15.657578
450	0.6443371	0.78954395	15.657573	0.75978	0.715384	15.657578
451	0.64475131	0.76588908	15.657573	0.770362	0.669441	15.657578
452	0.74418936	0.67489822	15.657573	0.859397	0.585868	15.657578
453	0.72247041	0.72688859	15.657573	0.762756	0.700346	15.657578
454	0.51252129	0.86008798	15.657573	0.743388	0.722329	15.657578
455	0.22879971	1.04332886	15.657573	0.758161	0.713607	15.657578
456	0.49451615	0.86879374	15.657573	0.784977	0.667649	15.657578
457	0.61730463	0.79382221	15.657573	0.809956	0.658432	15.657578
458	0.72501316	0.74525514	15.657573	0.803999	0.652058	15.657578
459	0.69454045	0.74727283	15.657573	0.788514	0.685062	15.657578
460	0.63909089	0.77040152	15.657573	0.765208	0.705671	15.657578
461	0.66181163	0.75262712	15.657573	0.787266	0.667723	15.657578
462	0.55251219	0.83822132	15.657573	0.829424	0.64137	15.657578
463	0.80513944	0.68464999	15.657573	0.744724	0.711264	15.657578
464	0.70250859	0.73723254	15.657573	0.768015	0.701385	15.657578
465	0.59414622	0.80920074	15.657573	0.848811	0.622095	15.657578
466	0.61966274	0.78486906	15.657573	0.796293	0.662787	15.657578
467	0.52473404	0.85249113	15.657573	0.808454	0.671259	15.657578
468	0.60496308	0.80896415	15.657573	0.742548	0.721366	15.657578
469	0.61949589	0.79070222	15.657573	0.811742	0.669353	15.657578
470	0.69907747	0.73108434	15.657573	0.73915	0.723346	15.657578
471	0.74682731	0.72107425	15.657573	0.754893	0.717161	15.657578
472	0.68695287	0.72899135	15.657573	0.782761	0.691515	15.657578
473	0.70027547	0.74764463	15.657573	0.76757	0.691957	15.657578
474	0.67665174	0.74817816	15.657573	0.78047	0.692034	15.657578
475	0.73865186	0.68108967	15.657573	0.859199	0.559392	15.657578
476	0.52289529	0.85180319	15.657573	0.668443	0.768252	15.657578
477	0.33180736	0.95022672	15.657573	0.716968	0.732784	15.657578
478	0.59534322	0.81261156	15.657573	0.815329	0.652696	15.657578
479	0.702301	0.72743886	15.657573	0.803292	0.672427	15.657578
480	0.76350165	0.70133905	15.657573	0.790684	0.678166	15.657578
481	0.77611628	0.7048954	15.657573	0.80878	0.667171	15.657578
482	0.71592386	0.69943891	15.657573	0.797176	0.647981	15.657578
483	0.7804117	0.67984787	15.657573	0.75695	0.702238	15.657578
484	0.85593272	0.61143133	15.657573	0.770794	0.690627	15.657578
485	0.74228279	0.7278532	15.657573	0.828818	0.628046	15.657578
486	0.60588402	0.80759028	15.657573	0.763802	0.697486	15.657578
487	0.71823562	0.70427794	15.657573	0.801204	0.669957	15.657578
488	0.6636924	0.77504323	15.657573	0.759127	0.700359	15.657578
489	0.69713735	0.73683862	15.657573	0.759708	0.706338	15.657578
490	0.67121011	0.77080842	15.657573	0.710417	0.741314	15.657578
491	0.78699172	0.64169254	15.657573	0.797238	0.676997	15.657578
492	0.60100456	0.81047883	15.657573	0.761262	0.706335	15.657578
493	0.81389203	0.64419667	15.657573	0.764715	0.697881	15.657578
494	0.65987459	0.77273028	15.657573	0.770325	0.700429	15.657578
495	0.699245	0.74799964	15.657573	0.851678	0.599122	15.657578
496	0.79823767	0.65839407	15.657573	0.760197	0.694588	15.657578
497	0.29238768	0.97692468	15.657573	0.72815	0.720757	15.657578
498	0.44636892	0.89441426	15.657573	0.756012	0.713311	15.657578
499	0.73933841	0.70345159	15.657573	0.797833	0.682087	15.657578
500	0.58807227	0.81453685	15.657573	0.714215	0.734489	15.657578
501	0.77527752	0.71043088	15.657573	0.710306	0.745301	15.657578

502	0.68434553	0.74872971	15.657573	0.709174	0.745781	15.657578
503	0.83047442	0.65821388	15.657573	0.872401	0.59495	15.657578
504	0.6976008	0.72715378	15.657573	0.756366	0.70927	15.657578
505	0.45165395	0.89565841	15.657573	0.795147	0.685827	15.657578
506	0.79364162	0.68147898	15.657573	0.821229	0.585546	15.657578
507	0.72811617	0.69173956	15.657573	0.735752	0.722935	15.657578
508	0.3902897	0.92240038	15.657573	0.735647	0.712962	15.657578
509	0.67516731	0.76343468	15.657573	0.731546	0.696748	15.657578
510	0.75947913	0.70850583	15.657573	0.647702	0.782054	15.657578
511	0.68924142	0.75321705	15.657573	0.786892	0.686214	15.657578
512	0.6297176	0.785607	15.657573	0.719129	0.72712	15.657578
513	0.72722106	0.72063911	15.657573	0.695228	0.754684	15.657578
514	0.68145715	0.74036507	15.657573	0.74899	0.716309	15.657578
515	0.51438259	0.85866594	15.657573	0.796234	0.651528	15.657578
516	0.43424789	0.9026355	15.657573	0.795587	0.655116	15.657578
517	0.71897431	0.7125138	15.657573	0.754364	0.699159	15.657578
518	0.71162204	0.73098453	15.657573	0.805346	0.654452	15.657578
519	0.67510939	0.74560581	15.657573	0.716585	0.739683	15.657578
520	0.55766011	0.83863379	15.657573	0.882547	0.567297	15.657578
521	0.59129059	0.80753152	15.657573	0.856421	0.604516	15.657578
522	0.74657949	0.66745387	15.657573	0.828337	0.626874	15.657578
523	0.7467179	0.6935483	15.657573	0.687775	0.763916	15.657578
524	0.5065352	0.86178731	15.657573	0.847128	0.638282	15.657578
525	0.78742553	0.69741061	15.657573	0.733981	0.721383	15.657578
526	0.66099005	0.75171893	15			

605	0.836401	0.628687	15.65758
606	0.911251	0.419262	15.65758
607	0.818817	0.6423	15.65758
608	0.815959	0.587867	15.65758
609	0.775377	0.701169	15.65758
610	0.810637	0.676703	15.65758
611	0.783418	0.686293	15.65758
612	0.827488	0.651619	15.65758
613	0.830243	0.633429	15.65758
614	0.76299	0.706539	15.65758
615	0.777326	0.683108	15.65758
616	0.792992	0.688547	15.65758
617	0.791698	0.667083	15.65758
618	0.746328	0.709129	15.65758
619	0.824635	0.653013	15.65758
620	0.780386	0.695657	15.65758
621	0.890327	0.548828	15.65758
622	0.765789	0.695786	15.65758
623	0.793323	0.67593	15.65758
624	0.799253	0.685113	15.65758
625	0.707269	0.713864	15.65758
626	0.815809	0.659695	15.65758
627	0.756838	0.708618	15.65758
628	0.758913	0.712994	15.65758
629	0.806806	0.670664	15.65758
630	0.725551	0.702166	15.65758
631	0.789219	0.677406	15.65758
632	0.798177	0.671401	15.65758
633	0.771027	0.67813	15.65758
634	0.809229	0.666031	15.65758
635	0.752316	0.7117	15.65758
636	0.745579	0.711261	15.65758
637	0.745375	0.717513	15.65758
638	0.828201	0.622256	15.65758
639	0.819101	0.644291	15.65758
640	0.783208	0.690717	15.65758
641	0.639238	0.786195	15.65758
642	0.728835	0.728735	15.65758
643	0.5941	0.810263	15.65758
644	0.743587	0.716656	15.65758
645	0.819951	0.659432	15.65758
646	0.71859	0.736019	15.65758
647	0.817048	0.659215	15.65758
648	0.814462	0.666707	15.65758
649	0.737011	0.71207	15.65758
650	0.751921	0.716585	15.65758
651	0.771256	0.690252	15.65758
652	0.779024	0.688401	15.65758
653	0.784727	0.669316	15.65758
654	0.763146	0.688507	15.65758
655	0.761684	0.700649	15.65758
656	0.744078	0.718388	15.65758
657	0.839238	0.631888	15.65758
658	0.712365	0.70875	15.65758
659	0.781958	0.696883	15.65758
660	0.764964	0.708114	15.65758
661	0.781655	0.694766	15.65758
662	0.88273	0.513199	15.65758
663	0.708519	0.743325	15.65758
664	0.78099	0.685178	15.65758
665	0.705255	0.723169	15.65758
666	0.78502	0.685646	15.65758
667	0.696065	0.734747	15.65758
668	0.832355	0.645889	15.65758
669	0.687384	0.756173	15.65758
670	0.778759	0.689232	15.65758
671	0.739144	0.727058	15.65758
672	0.766936	0.700403	15.65758
673	0.831052	0.656697	15.65758
674	0.76816	0.703657	15.65758
675	0.80481	0.656479	15.65758
676	0.830248	0.662945	15.65758
677	0.799644	0.675043	15.65758
678	0.755421	0.682801	15.65758
679	0.807969	0.663481	15.65758
680	0.778601	0.703357	15.65758
681	0.678404	0.759408	15.65758
682	0.844275	0.562663	15.65758
683	0.771829	0.692486	15.65758
684	0.827057	0.658848	15.65758
685	0.8889	0.520816	15.65758
686	0.779557	0.685926	15.65758
687	0.826954	0.656704	15.65758
688	0.769125	0.699903	15.65758
689	0.881961	0.496594	15.65758
690	0.710025	0.745151	15.65758
691	0.815741	0.637419	15.65758
692	0.864562	0.58562	15.65758
693	0.731239	0.725962	15.65758
694	0.725731	0.733802	15.65758
695	0.809398	0.650864	15.65758
696	0.844813	0.629186	15.65758
697	0.772659	0.696847	15.65758
698	0.785803	0.684959	15.65758
699	0.875638	0.559683	15.65758
700	0.745452	0.708584	15.65758
701	0.629989	0.794424	15.65758
702	0.814794	0.658299	15.65758
703	0.755485	0.715518	15.65758
704	0.831513	0.634615	15.65758
705	0.852114	0.583726	15.65758
706	0.849181	0.608123	15.65758
707	0.766739	0.672542	15.65758

708	0.687113	0.751077	15.65758
709	0.775649	0.668987	15.65758
710	0.73186	0.728451	15.65758
711	0.794779	0.668587	15.65758
712	0.746058	0.714136	15.65758
713	0.783579	0.684422	15.65758
714	0.793903	0.623058	15.65758
715	0.797154	0.664462	15.65758
716	0.829359	0.654034	15.65758
717	0.794461	0.67782	15.65758
718	0.746753	0.713377	15.65758
719	0.764302	0.709912	15.65758
720	0.821783	0.669849	15.65758
721	0.600036	0.803218	15.65758
722	0.773492	0.697938	15.65758
723	0.748952	0.708535	15.65758
724	0.802202	0.669293	15.65758
725	0.872055	0.608634	15.65758
726	0.821294	0.652607	15.65758
727	0.726352	0.722836	15.65758
728	0.659818	0.765166	15.65758
729	0.782503	0.684321	15.65758
730	0.688529	0.744634	15.65758
731	0.773486	0.705232	15.65758
732	0.691429	0.749325	15.65758
733	0.71483	0.729752	15.65758
734	0.78104	0.684301	15.65758
735	0.75907	0.690635	15.65758
736	0.610114	0.800979	15.65758
737	0.756082	0.695542	15.65758
738	0.76771	0.686997	15.65758
739	0.804666	0.665904	15.65758
740	0.664601	0.753398	15.65758
741	0.810006	0.663316	15.65758
742	0.749778	0.721999	15.65758
743	0.810336	0.665186	15.65758
744	0.712186	0.735793	15.65758
745	0.783865	0.679325	15.65758
746	0.796486	0.682023	15.65758
747	0.796407	0.671123	15.65758
748	0.804208	0.675282	15.65758
749	0.800447	0.654541	15.65758
750	0.767746	0.693829	15.65758
751	0.732253	0.728506	15.65758
752	0.751563	0.699475	15.65758
753	0.81538	0.675123	15.65758
754	0.823838	0.658771	15.65758
755	0.758944	0.710429	15.65758
756	0.695817	0.739976	15.65758
757	0.826663	0.628033	15.65758
758	0.853517	0.595221	15.65758
759	0.797715	0.681695	15.65758
760	0.785589	0.691973	15.65758
761	0.795076	0.679921	15.65758
762	0.768809	0.719103	15.65758
763	0.84491	0.646007	15.65758
764	0.773846	0.684647	15.65758
765	0.84135	0.614592	15.65758
766	0.808888	0.672955	15.65758
767	0.782672	0.682618	15.65758
768	0.7018	0.747612	15.65758
769	0.820353	0.624411	15.65758
770	0.763721	0.692248	15.65758
771	0.770611	0.680024	15.65758
772	0.725137	0.731628	15.65758
773	0.739857	0.718038	15.65758
774	0.855136	0.583444	15.65758
775	0.752022	0.712958	15.65758
776	0.736903	0.721651	15.65758
777	0.793606	0.622588	15.65758
778	0.822497	0.644963	15.65758
779	0.825582	0.619915	15.65758
780	0.772236	0.692406	15.65758
781	0.791914	0.653098	15.65758
782	0.808445	0.672087	15.65758
783	0.793581	0.687456	15.65758
784	0.679075	0.760631	15.65758
785	0.775771	0.674573	15.65758
786	0.855273	0.603479	15.65758
787	0.766861	0.699522	15.65758
788	0.833812	0.63632	15.65758
789	0.671904	0.767981	15.65758
790	0.627788	0.780373	15.65758
791	0.691161	0.754252	15.65758
792	0.800067	0.633382	15.65758
793	0.681481	0.747214	15.65758
794	0.896852	0.506732	15.65758
795	0.826931	0.646884	15.65758
796	0.81027	0.685558	15.65758
797	0.833139	0.601492	15.65758
798	0.866313	0.595174	15.65758
799	0.761802	0.70396	15.65758
800	0.708014	0.73629	15.65758
801	0.777637	0.693333	15.65758
802	0.820679	0.64775	15.65758
803	0.783761	0.667992	15.65758
804	0.745293	0.71143	15.65758
805	0.722151	0.743919	15.65758
806	0.761253	0.710745	15.65758
807	0.73444	0.683018	15.65758
808	0.768755	0.704782	15.65758
809	0.746894	0.717701	15.65758
810	0.707796	0.743212	15.65758

811	0.691524	0.75594	15.65758
812	0.78693	0.666508	15.65758
813	0.745628	0.698497	15.65758
814	0.74929	0.713002	15.65758
815	0.768514	0.698464	15.65758
816	0.842632	0.584736	15.65758
817	0.7051	0.730224	15.65758
818	0.76721	0.699879	15.65758
819	0.787893	0.671389	15.65758
820	0.780374	0.682974	15.65758
821	0.785363	0.692493	15.65758
822	0.859342	0.549345	15.65758
823	0.767217	0.704088	15.65758
824	0.739796	0.720221	15.65758
825	0.728577	0.733938	15.65758
826	0.733453	0.726341	15.65758
827	0.732387	0.72961	15.65758
828	0.815105	0.630482	15.65758
829	0.839441	0.65636	15.65758
830	0.834698	0.650292	15.65758
831	0.771269	0.704258	15.65758
832	0.789611	0.686827	15.65758
833	0.735719	0.72393	15.65758
834	0.814591	0.616849	15.65758
835	0.790419	0.689815	15.65758
836	0.78473	0.682878	15.65758
837	0.813936	0.656387	15.65758
838	0.829929	0.611358	15.65758
839	0.772189	0.694661	15.65758
840	0.707238	0.720096	15.65758
841	0.685376	0.754889	15.65758
842	0.769271	0.691431	15.65758
843	0.744316	0.714659	15.65758
844	0.880236	0.542133	15.65758
845	0.760082	0.702195	15.65758
846	0.763591	0.702477	15.65758
847	0.809324	0.672497	15.65758
848	0.822625	0.612721	15.65758
849	0.766008	0.712739	15.65758
850	0.785518	0.69913	15.65758
851	0.675955	0.765904	15.65758
852	0.800859	0.602692	15.65758
853	0.858401	0.561668	15.65758
854	0.769692	0.692131	15.65758
855	0.816124	0.659429	15.65758
856	0.771042	0.692388	15.65758
857	0.771223	0.686221	15.65758
858	0.670844	0.76087	15.65758
859	0.737992	0.727044	15.65758
860	0.672762	0.762582	15.65758
861	0.887975	0.483904	15.65758
862	0.73406	0.723293	15.65758
863	0.816208	0.655008	15.65758
864	0.841274	0.657643	15.65758
865	0.799198	0.687463	15.65758
866	0.835788	0.629502	15.65758
867	0.777863	0.689189	15.65758
868	0.695276	0.752255	15.65758
869	0.712226	0.736885	15.65758
870	0.773715	0.697803	15.65758
871	0.79545	0.687114	15.65758
872	0.765891	0.688616	15.65758
873	0.795922	0.683263	15.65758
874	0.769179	0.682906	15.65758
875	0.760249	0.70093	15.65758
876	0.819652	0.651266	15.65758
877	0.70846	0.709759	15.65758
878	0.803284	0.649877	15.65758
879	0.80757	0.666417	15.65758
880	0.775111	0.697829	15.65758
881	0.763048	0.704407	15.65758
882	0.768287	0.701009	15.65758
883	0.767751	0.694695	15.65758
884	0.822764	0.634876	15.65758
885	0.850516	0.640262	15.65758
886	0.591747	0.816696	15.65758
887	0.73863	0.725974	15.65758
888	0.748382	0.720216	15.65758
889	0.804458	0.656342	15.65758
890	0.769842	0.692604	15.65758
891	0.778384	0.691461	15.65758
892	0.728208	0.728898	15.65758
893	0.81855	0.672021	15.65758
894	0.704846	0.746881	15.65758
895	0.72821	0.730615	15.65758
896	0.77736	0.658292	15.65758
897	0.701517	0.744183	15.65758
898	0.784194	0.643621	15.65758
899	0.802241	0.66083	15.65758
900	0.825347	0.655826	15.65758
901	0.783879	0.671634	15.65758
902	0.812159	0.651685	15.65758
903	0.787115	0.68212	15.65758
904	0.765787	0.695202	15.65758
905	0.789955	0.691247	15.65758
906	0.743388	0.691064	15.65758
907	0.657245	0.76763	15.65758
908	0.379121	0.93263	15.65758
909	0.778152	0.68659	15.65758
910	0.708266	0.741077	15.65758
911	0.741949	0.703251	15.65758
912	0.732645	0.709869	15.65758
913	0.733462	0.719083	15.65758

914	0.716453	0.742462	15.65758
915	0.654978	0.773194	15.65758
916	0.625046	0.795415	15.65758
917	0.714263	0.730403	15.65758
918	0.770429	0.693096	15.65758
919	0.749573	0.693034	15.65758
920	0.772131	0.695857	15.65758
921	0.766798	0.691671	15.65758
922	0.756766	0.698513	15.65758
923	0.640414	0.779451	15.65758
924	0.750113	0.706342	15.65758
925	0.719802	0.728077	15.65758
926	0.777063	0.679308	15.65758
927	0.663746	0.766772	15.65758
928	0.719106	0.712363	15.65758
929	0.751487	0.692049	15.65758
930	0.790472	0.674228	15.65758
931	0.605095	0.802587	15.65758
932	0.755214	0.715396	15.65758
933	0.697897	0.74966	15.65758
934	0.785667	0.692032	15.65758
935	0.739355	0.719973	15.65758
936	0.741586	0.708798	15.65758
937	0.771365	0.688013	15.65758
938	0.740556	0.698675	15.65758
939	0.696002	0.751329	15.65758
940	0.806964	0.656185	15.65758
941	0.681813	0.755193	15.65758
942	0.668765	0.764835	15.65758
943	0.677381	0.757851	15.65758
944	0.751058	0.663902	15.65758
945	0.732774	0.689789	15.65758
946	0.67583	0.757583	15.65758
947	0.771558	0.680492	15.65758
948	0.697133	0.727558	15.65758
949	0.810621	0.659512	15.65758
950	0.784512	0.665114	15.65758
951	0.840039	0.615174	15.65758
952	0.694421	0.744816	15.65758
953	0.712999	0.7328	15.65758
954	0.838536	0.616874	15.65758
955	0.65724	0.771597	15.65758
956	0.744268	0.710347	15.65758
957	0.729235	0.72432	15.65758
958	0.70442	0.729031	15.65758
959	0.775332	0.695943	15.65758
960	0.630596	0.789718	15.65758
961	0.701197	0.723258	15.65758
962	0.806464	0.633677	15.65758
963	0.703745	0.725434	15.65758
964	0.582657	0.822075	15.65758
965	0.700899	0.717601	15.65758
966	0.696693	0.742772	15.65758
967	0.720849	0.714114	15.65758
968	0.716702	0.729774	15.65758
969	0.756091	0.676041	15.65758
970	0.761053	0.694696	15.65758
971	0.825623	0.619598	15.65758
972	0.760872	0.685556	15.65758
973	0.767353	0.701338	15.65758
974	0.751818	0.716972	15.65758
975	0.672787	0.758048	15.65758
976	0.70122	0.735332	15.65758
977	0.548242	0.841881	15.65758
978	0.653347	0.778939	15.65758
979	0.657986	0.758886	15.65758
980	0.693729	0.739627	15.65758
981	0.75958	0.68512	15.65758
982	0.787659	0.682513	15.65758
983	0.783072	0.673346	15.65758
984	0.852235	0.565936	15.65758
985	0.756683	0.704229	15.65758
986	0.776682	0.70108	15.65758
987	0.744442	0.717364	15.65758
988	0.705559	0.729741	15.65758
989	0.691645	0.735575	15.65758
990	0.766992	0.682072	15.65758
991	0.723486	0.723949	15.65758
992	0.624424	0.793921	15.65758
993	0.224089	1.000564	15.65758
994	0.742459	0.701235	15.65758
995	0.669515	0.762791	15.65758
996	0.800951	0.650713	15.65758
997	0.688341	0.743621	15.65758
998	0.680654	0.742041	15.65758
999	0.750087	0.70924	15.65758
1000	0.781958	0.684516	15.65758
1001	0.837911	0.624383	15.65758
1002	0.771139	0.686127	15.65758
1003	0.735688	0.722035	15.65758
1004	0.747783	0.686443	15.65758
1005	0.727815	0.690349	15.65758
1006	0.762345	0.700186	15.65758
1007	0.718939	0.72389	15.65758
1008	0.746073	0.719766	15.65758
1009	0.705781	0.738709	15.65758
1010	0.793995	0.65613	15.65758
1011	0.723311	0.723929	15.65758
1012	0.629387	0.786832	15.65758
1013	0.77112	0.669028	15.65758
1014	0.77787	0.66907	15.65758
1015	0.669405	0.76766	15.65758
1016	0.705858	0.742072	15.65758



1017	0.680278	0.753871	15.65758
1018	0.753652	0.662044	15.65758
1019	0.820061	0.647687	15.65758
1020	0.72079	0.723806	15.65758
1021	0.776586	0.688046	15.65758
1022	0.687348	0.754433	15.65758
1023	0.690358	0.739867	15.65758
1024	0.783328	0.661857	15.65758
1025	0.506323	0.861537	15.65758
1026	0.67595	0.754128	15.65758
1027	0.757751	0.710844	15.65758
1028	0.75452	0.709793	15.65758
1029	0.757314	0.696604	15.65758
1030	0.815508	0.612907	15.65758
1031	0.71877	0.729066	15.65758
1032	0.743899	0.715105	15.65758
1033	0.790251	0.658635	15.65758
1034	0.732677	0.729678	15.65758
1035	0.35503	0.964937	15.65758
1036	0.709782	0.76099	15.65758
1037	0.531547	0.847224	15.65758
1038	0.732107	0.723587	15.65758
1039	0.744643	0.674368	15.65758
1040	0.627713	0.793194	15.65758
1041	0.756276	0.688384	15.65758
1042	0.653043	0.780371	15.65758
1043	0.560027	0.833088	15.65758
1044	0.711066	0.725508	15.65758
1045	0.756527	0.710687	15.65758
1046	0.818695	0.634769	15.65758
1047	0.695607	0.735414	15.65758
1048	0.714009	0.72878	15.65758
1049	0.712248	0.741944	15.65758
1050	0.775953	0.672263	15.65758
1051	0.744133	0.703175	15.65758
1052	0.772121	0.684686	15.65758
1053	0.713474	0.728495	15.65758
1054	0.771891	0.685924	15.65758
1055	0.809628	0.654636	15.65758
1056	0.760103	0.692118	15.65758
1057	0.78302	0.678274	15.65758
1058	0.745836	0.714558	15.65758
1059	0.768741	0.697168	15.65758
1060	0.704826	0.749205	15.65758
1061	0.775161	0.683603	15.65758
1062	0.732497	0.702145	15.65758
1063	0.794772	0.653777	15.65758
1064	0.704785	0.741416	15.65758
1065	0.610918	0.803309	15.65758
1066	0.73975	0.703612	15.65758
1067	0.578734	0.819566	15.65758
1068	0.755852	0.712753	15.65758
1069	0.757024	0.697733	15.65758
1070	0.790732	0.687048	15.65758
1071	0.63718	0.77523	15.65758
1072	0.672559	0.764661	15.65758
1073	0.551601	0.837156	15.65758
1074	0.838523	0.610499	15.65758
1075	0.78146	0.649677	15.65758
1076	0.757695	0.682712	15.65758
1077	0.765066	0.691627	15.65758
1078	0.798581	0.656941	15.65758
1079	0.66402	0.761724	15.65758
1080	0.720704	0.730526	15.65758
1081	0.660943	0.768078	15.65758
1082	0.819114	0.637775	15.65758
1083	0.74674	0.695437	15.65758
1084	0.709397	0.741257	15.65758
1085	0.711678	0.738512	15.65758
1086	0.688208	0.753062	15.65758
1087	0.793762	0.656493	15.65758
1088	0.708538	0.730728	15.65758
1089	0.801037	0.669775	15.65758
1090	0.641376	0.776633	15.65758
1091	0.736028	0.720062	15.65758
1092	0.674931	0.768255	15.65758
1093	0.776621	0.659614	15.65758
1094	0.767389	0.680831	15.65758
1095	0.790682	0.632699	15.65758
1096	0.841569	0.63514	15.65758
1097	0.743903	0.704644	15.65758
1098	0.805389	0.618343	15.65758
1099	0.696449	0.748044	15.65758
1100	0.719927	0.715891	15.65758
1101	0.69704	0.73399	15.65758
1102	0.651679	0.771676	15.65758
1103	0.755278	0.670244	15.65758
1104	0.720316	0.722533	15.65758
1105	0.737407	0.719694	15.65758
1106	0.662154	0.766654	15.65758
1107	0.830692	0.631771	15.65758
1108	0.791845	0.666042	15.65758
1109	0.649861	0.777237	15.65758
1110	0.686171	0.760505	15.65758
1111	0.816981	0.643317	15.65758
1112	0.764978	0.679219	15.65758
1113	0.614046	0.795592	15.65758
1114	0.639398	0.78214	15.65758
1115	0.704238	0.733455	15.65758
1116	0.755563	0.695235	15.65758
1117	0.785704	0.692678	15.65758
1118	0.758935	0.708937	15.65758
1119	0.781297	0.676508	15.65758

1120	0.71271	0.741053	15.65758
1121	0.590683	0.814181	15.65758
1122	0.717742	0.722819	15.65758
1123	0.692886	0.739174	15.65758
1124	0.630878	0.791091	15.65758
1125	0.735303	0.720045	15.65758
1126	0.631029	0.780588	15.65758
1127	0.722456	0.724475	15.65758
1128	0.531931	0.848575	15.65758
1129	0.70148	0.746213	15.65758
1130	0.763469	0.685513	15.65758
1131	0.639119	0.773494	15.65758
1132	0.772997	0.687042	15.65758
1133	0.828557	0.623948	15.65758
1134	0.695512	0.755683	15.65758
1135	0.742055	0.690035	15.65758
1136	0.6752	0.765561	15.65758
1137	0.813241	0.638919	15.65758
1138	0.800103	0.673278	15.65758
1139	0.778431	0.663085	15.65758
1140	0.665075	0.758563	15.65758
1141	0.239762	0.998118	15.65758
1142	0.66556	0.757436	15.65758
1143	0.700001	0.735559	15.65758
1144	0.678126	0.762227	15.65758
1145	0.747102	0.705114	15.65758
1146	0.803634	0.660102	15.65758
1147	0.783473	0.669712	15.65758
1148	0.747155	0.708985	15.65758
1149	0.725198	0.702334	15.65758
1150	0.685829	0.75145	15.65758
1151	0.502274	0.864317	15.65758
1152	0.782728	0.672239	15.65758
1153	0.72986	0.727101	15.65758
1154	0.773939	0.697421	15.65758
1155	0.687333	0.743767	15.65758
1156	0.707543	0.731405	15.65758
1157	0.845588	0.611515	15.65758
1158	0.710151	0.732487	15.65758
1159	0.641018	0.772645	15.65758
1160	0.661364	0.776176	15.65758
1161	0.808727	0.653302	15.65758
1162	0.766915	0.69704	15.65758
1163	0.686071	0.753808	15.65758
1164	0.599673	0.805603	15.65758
1165	0.794448	0.629683	15.65758
1166	0.802811	0.644151	15.65758
1167	0.651216	0.772093	15.65758
1168	0.795941	0.674203	15.65758
1169	0.72548	0.711849	15.65758
1170	0.739106	0.712871	15.65758
1171	0.730707	0.71683	15.65758
1172	0.698956	0.743106	15.65758
1173	0.809202	0.661838	15.65758
1174	0.821564	0.578432	15.65758
1175	0.632834	0.784984	15.65758
1176	0.577107	0.821497	15.65758
1177	0.707338	0.741701	15.65758
1178	0.715981	0.736117	15.65758
1179	0.764327	0.675078	15.65758
1180	0.807443	0.655474	15.65758
1181	0.681317	0.739627	15.65758
1182	0.73531	0.704112	15.65758
1183	0.66009	0.755459	15.65758
1184	0.740376	0.714956	15.65758
1185	0.776033	0.672729	15.65758
1186	0.740137	0.69061	15.65758
1187	0.63157	0.787747	15.65758
1188	0.754081	0.697833	15.65758
1189	0.74844	0.685375	15.65758
1190	0.727209	0.735502	15.65758
1191	0.656472	0.77443	15.65758
1192	0.796227	0.658925	15.65758
1193	0.772166	0.672837	15.65758
1194	0.715671	0.736194	15.65758
1195	0.52654	0.849773	15.65758
1196	0.732145	0.726056	15.65758
1197	0.705633	0.734931	15.65758
1198	0.768547	0.702023	15.65758
1199	0.71499	0.738296	15.65758
1200	0.764234	0.694914	15.65758
1201	0.673909	0.756292	15.65758
1202	0.682181	0.744902	15.65758
1203	0.774757	0.684742	15.65758
1204	0.680445	0.757292	15.65758
1205	0.69218	0.741157	15.65758
1206	0.76709	0.67628	15.65758
1207	0.736914	0.707589	15.65758
1208	0.708526	0.729553	15.65758
1209	0.708515	0.728573	15.65758
1210	0.740751	0.717606	15.65758
1211	0.623889	0.794416	15.65758
1212	0.807316	0.656808	15.65758
1213	0.762856	0.706352	15.65758
1214	0.712044	0.736508	15.65758
1215	0.588046	0.817042	15.65758
1216	0.755743	0.686084	15.65758
1217	0.757567	0.666973	15.65758
1218	0.278226	0.974871	15.65758
1219	0.725258	0.723067	15.65758
1220	0.70005	0.736196	15.65758
1221	0.58577	0.814576	15.65758
1222	0.723187	0.720456	15.65758

1223	0.714422	0.730269	15.65758
1224	0.577502	0.822202	15.65758
1225	0.693312	0.751261	15.65758
1226	0.791282	0.685651	15.65758
1227	0.564387	0.829423	15.65758
1228	0.747661	0.704331	15.65758
1229	0.720655	0.713909	15.65758
1230	0.662961	0.769072	15.65758
1231	0.72137	0.721816	15.65758
1232	0.686161	0.748134	15.65758
1233	0.809834	0.661821	15.65758
1234	0.76412	0.698151	15.65758
1235	0.689511	0.733263	15.65758
1236	0.792592	0.657457	15.65758
1237	0.766558	0.712442	15.65758
1238	0.761543	0.706918	15.65758
1239	0.550016	0.837194	15.65758
1240	0.730906	0.726227	15.65758
1241	0.793114	0.681477	15.65758
1242	0.784768	0.672592	15.65758
1243	0.747936	0.716881	15.65758
1244	0.725548	0.721379	15.65758
1245	0.629535	0.794369	15.65758
1246	0.839963	0.619946	15.65758
1247	0.630581	0.786691	15.65758
1248	0.802012	0.65231	15.65758
1249	0.704737	0.732707	15.65758
1250	0.684682	0.75004	15.65758
1251	0.751803	0.681922	15.65758
1252	0.727949	0.725403	15.65758
1253	0.695998	0.751598	15.65758
1254	0.484333	0.874303	15.65758
1255	0.698134	0.743205	15.65758
1256	0.714551	0.727829	15.65758
1257	0.66066	0.782367	15.65758
1258	0.785997	0.641922	15.65758
1259	0.784753	0.691787	15.65758
1260	0.779707	0.685682	15.65758
1261	0.825568	0.627843	15.65758
1262	0.72802	0.711189	15.65758
1263	0.75862	0.696339	15.65758
1264	0.747344	0.700294	15.65758
1265	0.694342	0.746211	15.65758
1266	0.860389	0.599314	15.65758
1267	0.759755	0.703841	15.65758
1268	0.642002	0.777851	15.65758
1269	0.776608	0.633207	15.65758
1270	0.744324	0.704364	15.65758
1271	0.741291	0.712387	15.65758
1272	0.744685	0.694415	15.65758
1273	0.702378	0.745417	15.65758
1274	0.779596	0.6634	15.65758
1275	0.756676	0.701942	15.65758
1276	0.677364	0.771027	15.65758
1277	0.714177	0.733026	15.65758
1278	0.722679	0.730909	15.65758
1279	0.702159	0.743194	15.65758
1280	0.74375	0.702985	15.65758
1281	0.812572	0.642327	15.65758
1282	0.720098	0.735015	15.65758
1283	0.749565	0.69603	15.65758
1284	0.75384	0.709555	15.65758
1285	0.779544	0.686506	15.65758
1286	0.585673	0.817444	15.65758
1287	0.62267	0.793432	15.65758

1288	0.75075	0.679543	15.65758
1289	0.769074	0.714154	15.65758
1290	0.672913	0.755533	15.65758
1291	0.791189	0.677605	15.65758
1292	0.687371	0.748525	15.65758
1293	0.728507	0.727564	15.65758
1294	0.712912	0.744501	15.65758
1295	0.770852	0.664634	15.65758
1296	0.722733	0.720011	15.65758
1297	0.779218	0.666609	15.65758
1298	0.647898	0.727269	15.65758
1299	0.796565	0.6778	15.65758
1300	0.777649	0.685544	15.65758
1301	0.697163	0.750899	15.65758
1302	0.723201	0.736601	15.65758
1303	0.663783	0.771957	15.65758
1304	0.79649	0.632939	15.65758
1305	0.716883	0.734674	15.65758
1306	0.826048	0.635109	15.65758
1307	0.81099	0.665067	15.65758
1308	0.721699	0.720644	15.65758
1309	0.779276	0.691522	15.65758
1310	0.707097	0.750393	15.65758
1311	0.768244	0.65827	15.65758
1312	0.693818	0.742331	15.65758
1313	0.654357	0.774034	15.65758
1314	0.731014	0.727412	15.65758
1315	0.820342	0.606148	15.65758
1316	0.719218	0.72763	15.65758
1317	0.792234	0.649942	15.65758
1318	0.607372	0.801541	15.65758
1319	0.767538	0.694009	15.65758
1320	0.672924	0.771797	15.65758
1321	0.700652	0.744471	15.65758
1322	0.704809	0.723656	15.65758
1323	0.814738	0.629158	15.65758
1324	0.790582	0.628781	15.65758
1325	0.718023	0.713256	15.65758
1326	0.783174	0.692256	15.65758
1327	0.675715	0.755211	15.65758
1328	0.659093	0.769057	15.65758
1329	0.668308	0.758882	15.65758
1330	0.669046	0.752132	15.65758
1331	0.744776	0.714642	15.65758
1332	0.670585	0.764935	15.65758
1333	0.68995	0.740489	15.65758
1334	0.607847	0.796431	15.65758
1335	0.754045	0.70841	15.65758
1336	0.611958	0.805104	15.65758
1337	0.746985	0.705477	15.65758
1338	0.753129	0.69097	15.65758
1339	0.825727	0.661501	15.65758
1340	0.697593	0.745985	15.65758
1341	0.621878	0.792016	15.65758
1342	0.760842	0.704345	15.65758
1343	0.771142	0.677164	15.65758
1344	0.775522	0.678941	15.65758
1345	0.488443	0.872785	15.65758
1346	0.687731	0.754729	15.65758
1347	0.72357	0.736731	15.65758
1348	0.756148	0.677644	15.65758
1349	0.727772	0.709451	15.65758

**Table S2. Phenotypic characteristics of GTEx lung tissue donors**

Feature	Number of individuals (%)	Median (range)
Sex		
Female	183 (31.7)	
Male	395 (68.3)	
Age		56 (21 - 70)
<40	73 (12.6)	
40-49	93 (16.1)	
50-59	200 (34.6)	
60-69	190 (32.9)	
>69	22 (3.8)	
Body mass index		27.7 (17.0 - 35.4)
<25	155 (26.8)	
25-30	246 (42.6)	
>30	177 (30.6)	
Race		
Caucasian	493 (85.9)	
Black/African American	70 (12.2)	
Asian	10 (1.7)	
American Indian/Alaska Native	1 (0.2)	
Smoking status		
Non-smoker	180 (32.0)	
Smoker	382 (68.0)	

**Table S3. Multivariate analysis of ACE2 expression in human lung tissue**

Variable	$\beta$ value	S.E.	<i>t</i> value	<i>p</i> value	
CD8+ T cells	-2.719	0.584	-4.656	<b>4.02e-06</b>	****
NK cells resting	-3.128	0.583	-5.366	<b>1.18e-07</b>	****
NK cells activated	-2.281	0.704	-3.241	<b>0.0013</b>	**
M1 macrophages	-4.963	1.339	-3.707	<b>0.0002</b>	***
CD4+ T cells	0.453	0.513	0.882	0.3781	
Dendritic cells	-12.793	6.688	-1.913	0.0563	
Neutrophils	-0.398	0.469	-0.848	0.3971	
Sex = male (vs. female)	0.065	0.056	1.16	0.2466	
Age	0.004	0.002	1.799	0.0726	
BMI	-0.004	0.006	-0.556	0.5787	
Race = Caucasian (vs. non-Caucasian)	-0.096	0.073	-1.313	0.1899	
Smoking status = yes (vs. no)	-0.025	0.058	-0.433	0.6650	

Abbreviations: S.E., Standard Error.

**Table S4. Meta-analysis of ACE2 mRNA and protein levels in 17 human tissues**

Source data of Fig. 2f.

Source data type	Source data method	Adipose tissue	Airway epithelium	Brain	Cardiac muscle	Colorectal tissue	Endometrium	Gall bladder	Kidney	Liver	Lung	Oral mucosa/esophagus	Skin	Small intestine	Smooth muscle	Spleen	Stomach	Testis	Ref.
mRNA	NB	0	N	N	3	2	0	N	3	0	0	N	0	2	0	N	N	3	[1]
mRNA	qRT-PCR	1	1	0	2	2	1	2	2	1	1	1	0	3	1	0	1	3	[2]
mRNA	MA	2	2	2	2	2	1	N	3	2	2	N	1	3	2	N	N	3	[3]
mRNA	RNAseq	2	N	2	2	1	1	3	3	0	0	0	1	3	2	N	0	3	[4]
mRNA	RNAseq	N	N	N	N	N	N	N	N	N	N	1	N	N	N	N	N	N	[5]
mRNA	CAGE	0	N	0	1	2	0	1	1	0	0	0	N	3	0	0	N	2	[6]
Protein	MS	N	N	0	1	0	N	1	3	1	0	0	N	N	N	N	N	3	[7]
Protein	IHC	3	1	1	N	1	N	N	3	1	3	2	3	3	3	3	0	N	[8]
Protein	IHC	0	0	0	1	2	0	3	3	0	0	0	0	3	0	0	0	3	[9]
<b>Scores (averages)</b>																			
<b>mRNA score</b>		1.0	1.5	1.0	2.0	1.8	0.6	2.0	2.4	0.6	0.6	0.5	0.5	2.8	1.0	0.0	0.5	2.8	
<b>Protein score</b>		1.5	0.5	0.3	1.0	1.0	0.0	2.0	3.0	0.7	1.0	0.7	1.5	3.0	1.5	1.5	0.0	3.0	
Abbreviations: CAGE, cap analysis of gene expression; IHC, immunohistochemistry; MA, microarray; MS, mass spectrometry; N, not determined; NB Northern blot.																			

### Supplementary References

1. Tipnis, S.R., et al., *A human homolog of angiotensin-converting enzyme. Cloning and functional expression as a captopril-insensitive carboxypeptidase.* J Biol Chem, 2000. **275**(43): p. 33238-43.
2. Harmer, D., et al., *Quantitative mRNA expression profiling of ACE 2, a novel homologue of angiotensin converting enzyme.* FEBS Lett, 2002. **532**(1-2): p. 107-10.
3. Wu, C., et al., *BioGPS: building your own mash-up of gene annotations and expression profiles.* Nucleic Acids Res, 2016. **44**(D1): p. D313-6.
4. Uhlen, M., et al., *A pathology atlas of the human cancer transcriptome.* Science, 2017. **357**(6352).
5. GTEx Consortium, *Genetic effects on gene expression across human tissues.* Nature, 2017. **550**(7675): p. 204-213.
6. FANTOM Consortium, RIKEN PMI, CLST (DGT), *A promoter-level mammalian expression atlas.* Nature, 2014. **507**(7493): p. 462-70.
7. Kim, M.S., et al., *A draft map of the human proteome.* Nature, 2014. **509**(7502): p. 575-81.
8. Hamming, I., et al., *Tissue distribution of ACE2 protein, the functional receptor for SARS coronavirus. A first step in understanding SARS pathogenesis.* J Pathol, 2004. **203**(2): p. 631-7.
9. Thul, P.J., et al., *A subcellular map of the human proteome.* Science, 2017. **356**(6340).