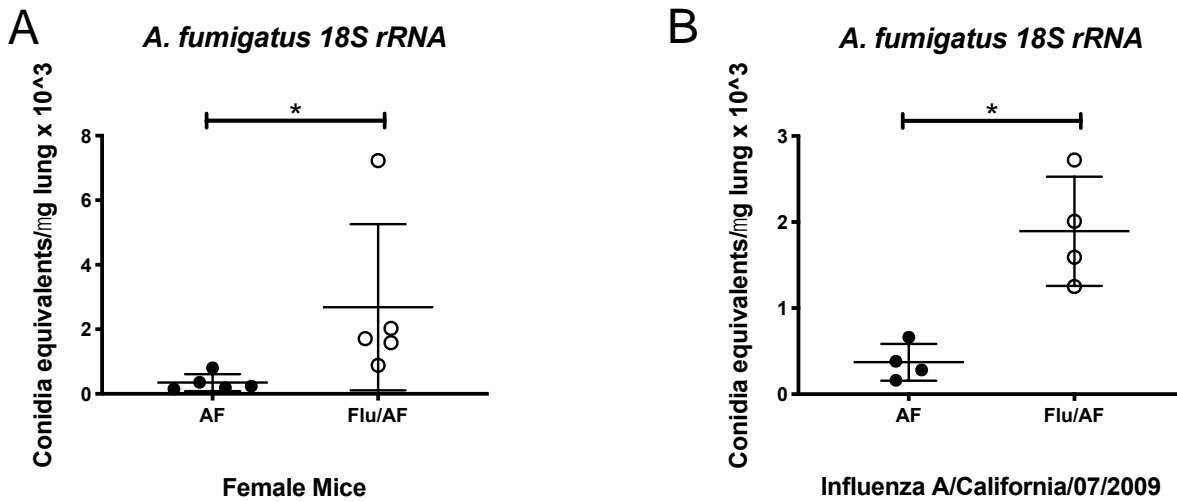
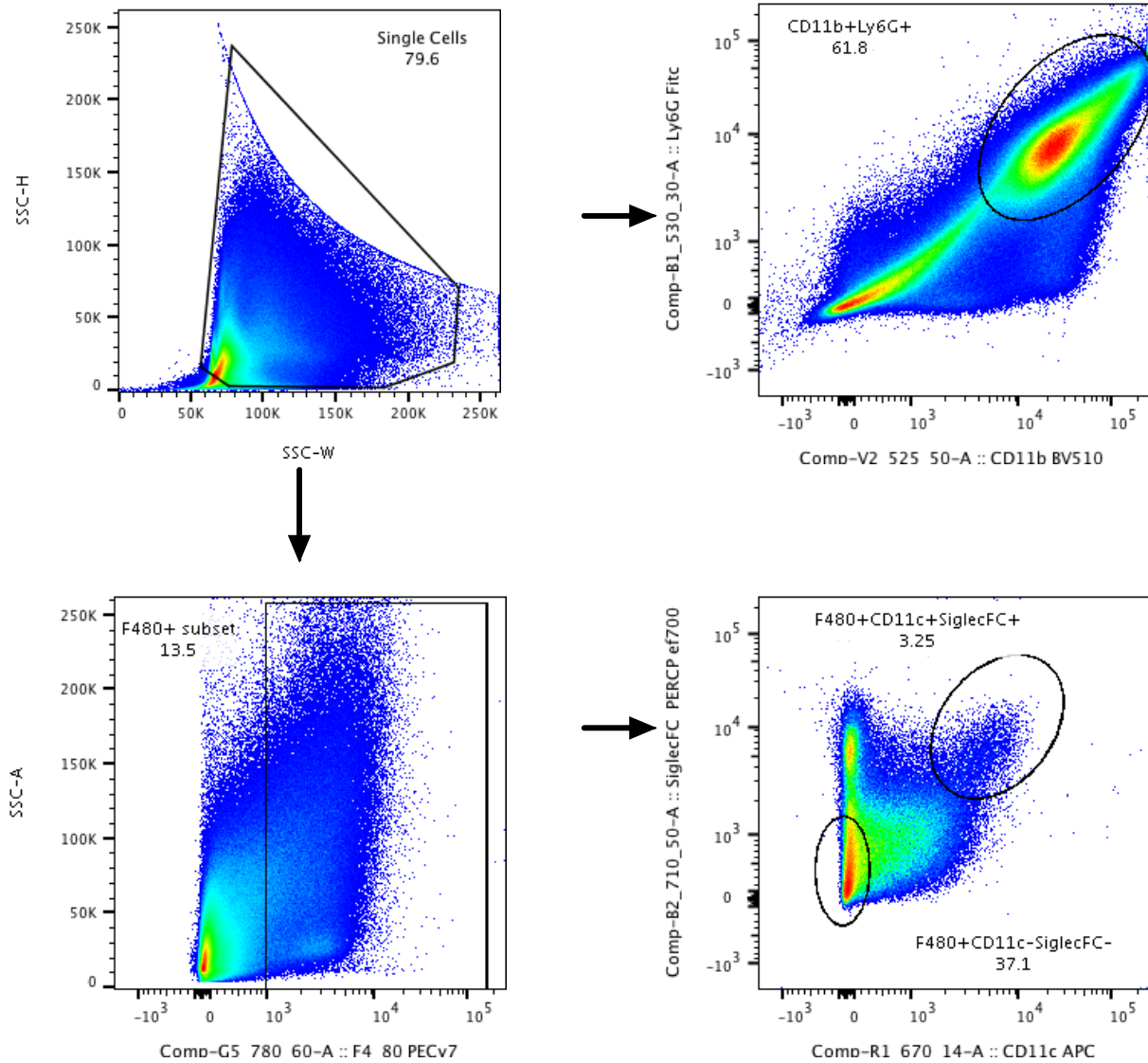


Supplemental Figure 1



Supplemental Figure 1. **Preceding influenza A infection exacerbates *Aspergillus fumigatus* infection in the lung regardless of sex or influenza strain.** C57BL/6 female mice were infected with 100 PFU of influenza A PR/8/34 for 6 days, then challenged with 2.5×10^7 resting conidia of *A. fumigatus* for 48 hours (n=5 mice). A – lung fungal burden was assessed by RT-PCR analysis of *A. fumigatus* 18S rRNA levels (n=5). C57BL/6 male mice were infected with 100 PFU of influenza A CA/07/2009 for 6 days, then challenged with 2.5×10^7 resting conidia of *A. fumigatus* for 48 hours (n=4 mice). B - lung fungal burden was assessed by RT-PCR analysis of *A. fumigatus* 18S rRNA levels (n=4). * p < 0.05. Significance was tested by unpaired t test. Each experiment was performed once.

Supplemental Figure 2



Supplemental Figure 2. **Flow cytometry gating strategy.** Cells from lung tissue were stained with fluorescent conjugated antibodies for F480, CD11b, CD11c, Ly6G, and Siglec-F.