

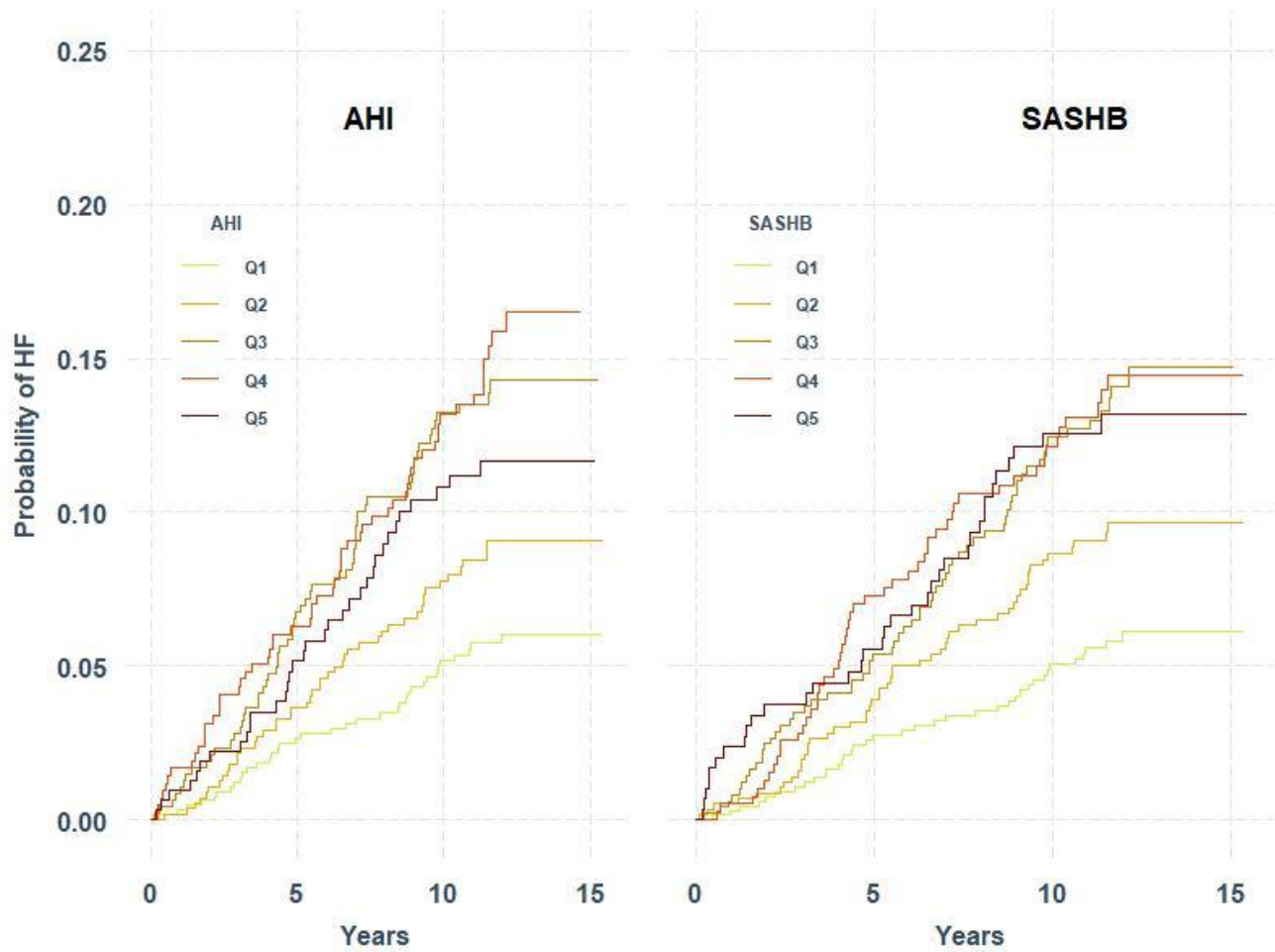
The Sleep Apnea-Specific Hypoxic Burden Predicts Incident Heart Failure

Ali Azarbarzin, PhD; Scott A. Sands, PhD; Luigi Taranto-Montemurro, MD; Daniel Vena, PhD; Tamar Sofer, PhD; Sang-Wook Kim, MD; Katie L. Stone, PhD; David P. White, MD; Andrew Wellman, MD, PhD; and Susan Redline, MD

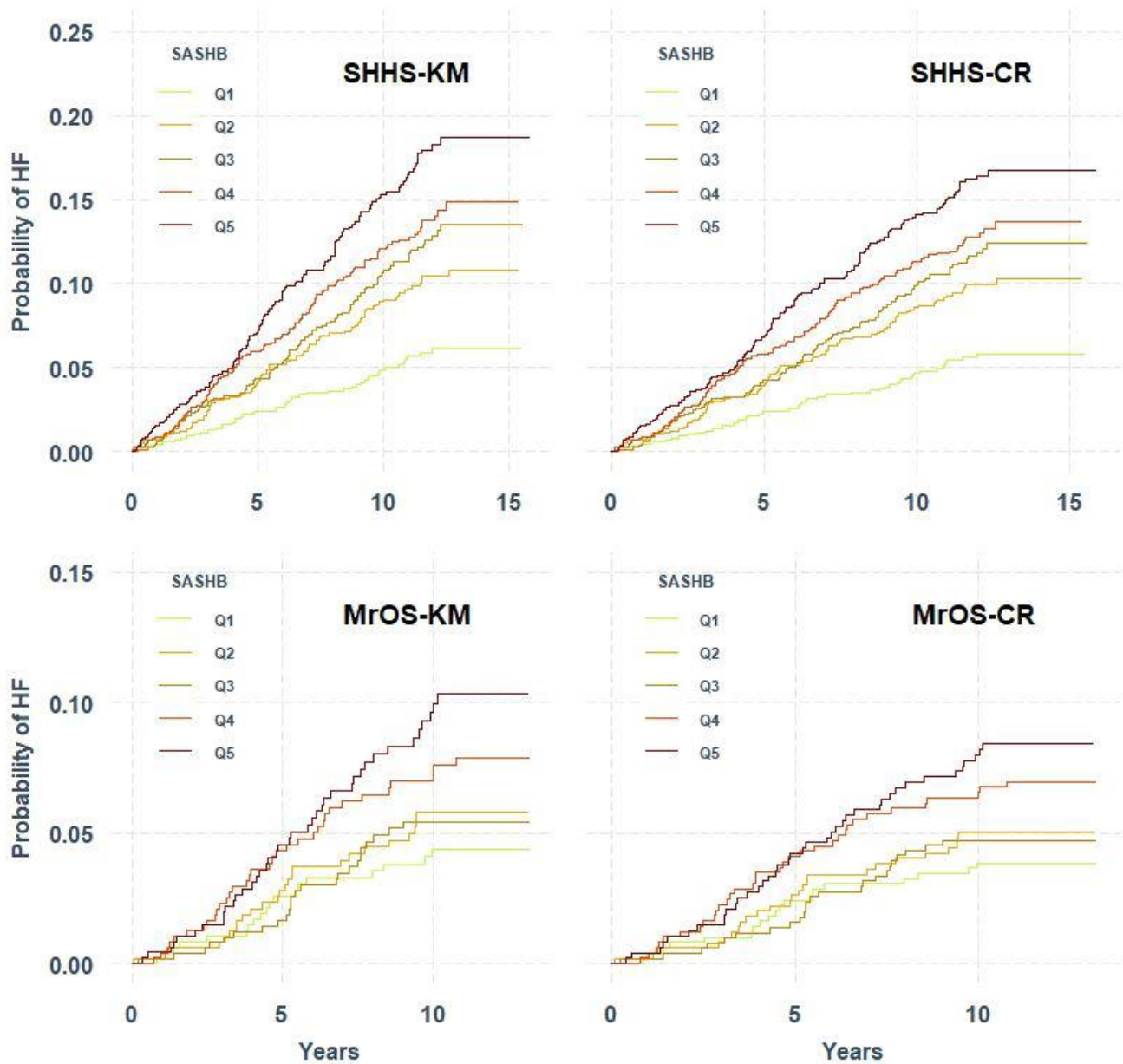
CHEST 2020; 158(2):739-750

Online supplements are not copyedited prior to posting and the author(s) take full responsibility for the accuracy of all data.

© 2020 AMERICAN COLLEGE OF CHEST PHYSICIANS. Reproduction of this article is prohibited without written permission from the American College of Chest Physicians. See online for more details. DOI: 10.1016/j.chest.2020.03.053



e-Figure 1: Unadjusted Kaplan-Meier cumulative incidence HF function for quintiles of AHI (apneahypopnea index) and SASHB (sleep apnea-specific hypoxic burden) in women in the Sleep HeartHealth Study.



e-Figure 2: Cumulative incidence function (CIF) of HF for quintiles of SASHB (sleep apnea-specific hypoxic burden) in men in the Sleep Heart Health Study (SHHS; top panel) and the Outcomes of Sleep Disorders in Older Men (MrOS; bottom panel) study. The left column plots show the unadjusted Kaplan-Meire (KM) CIFs while the plots on the right show the CIFs after accounting for the competing risk (CR) of mortality.