

Supplementary Information

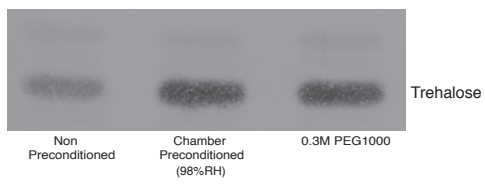
C. elegans possess a general program to enter cryptobiosis that allows dauer larvae to survive different kinds of abiotic stress

Vamshidhar R. Gade¹, Sofia Traikov¹, Jana Oertel², Karim Fahmy², Teymuras V. Kurzchalia*¹

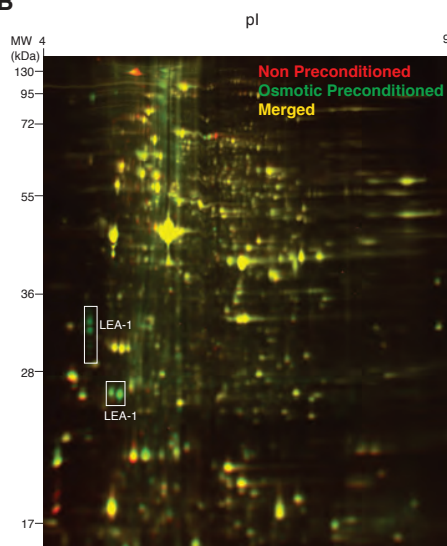
1. Max Planck Institute of Molecular Cell Biology and Genetics, Dresden, Germany.

2. Institute of Resource Ecology at the Helmholtz-Zentrum Dresden-Rossendorf, Dresden, Germany.

A



B



C

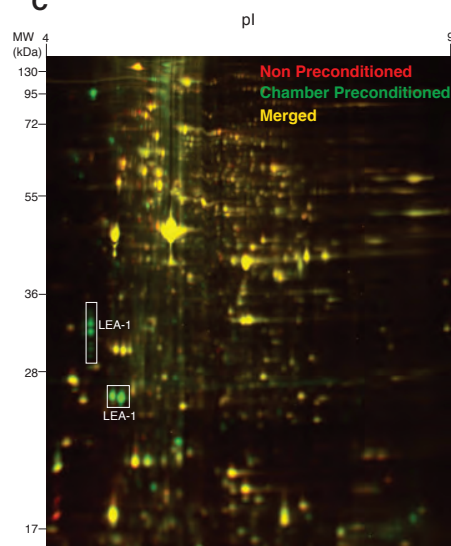


Figure S1

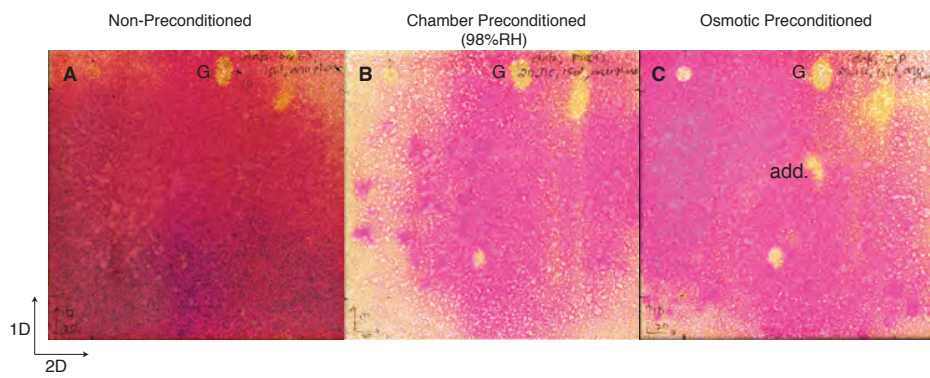


Figure S2

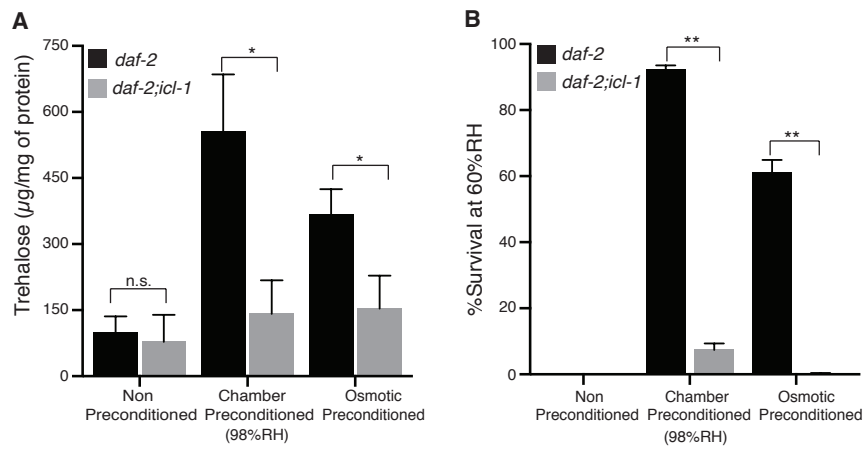


Figure S3

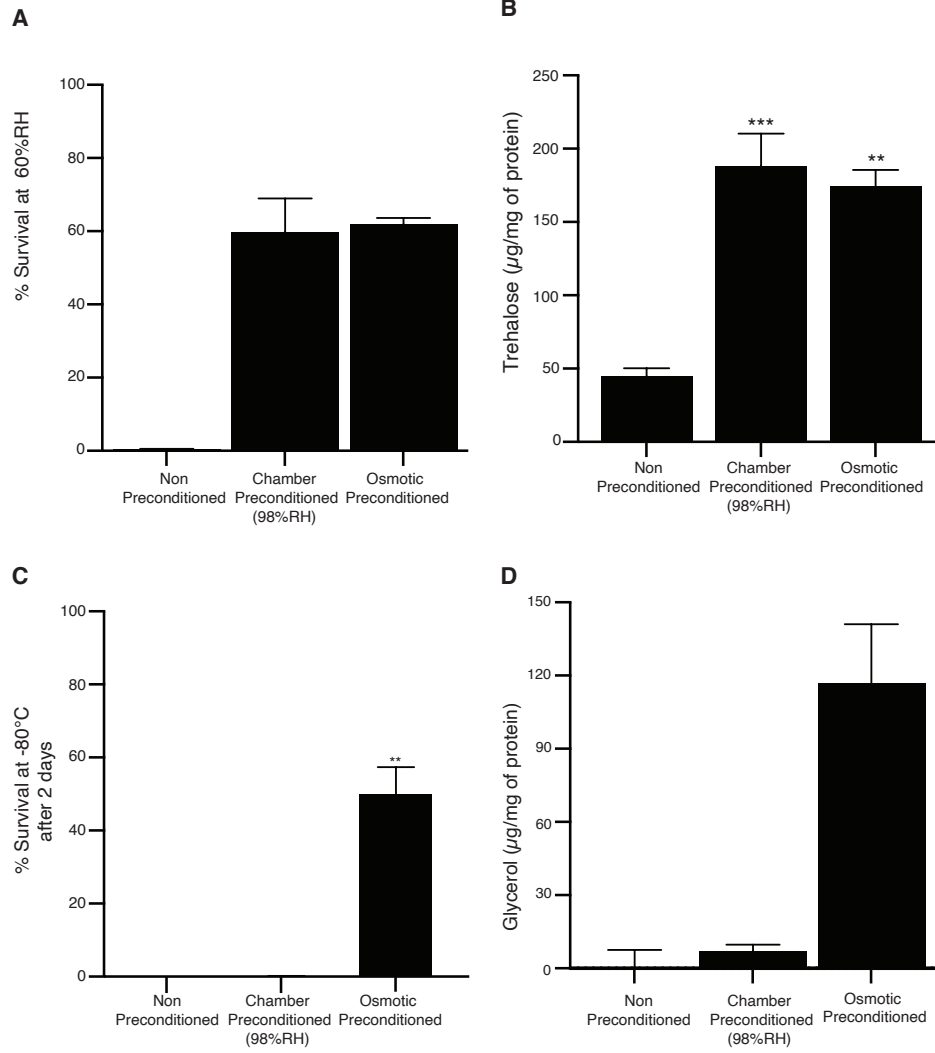


Figure S4