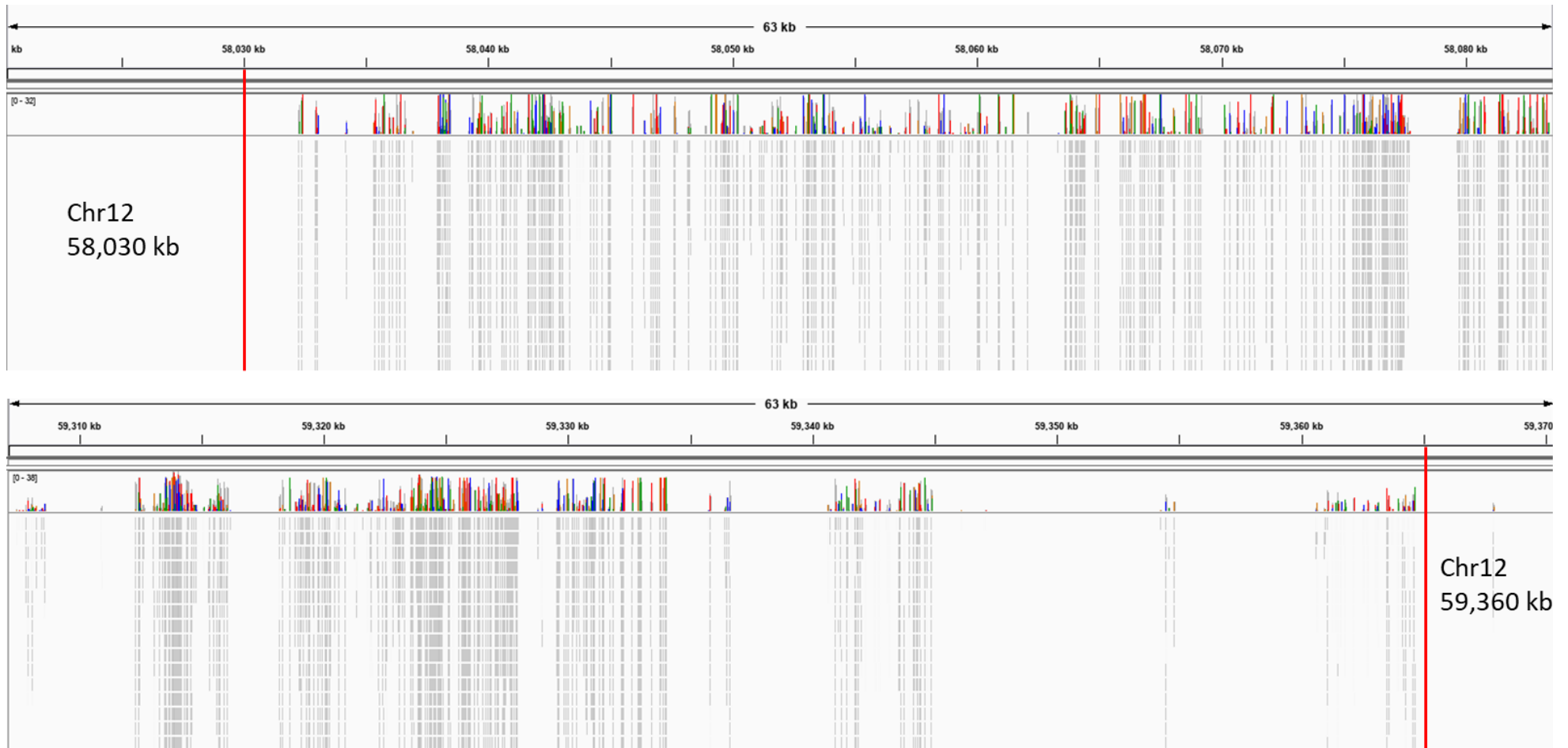


Clot et al, The origin and widespread occurrence of Sli based self-compatibility in potato.

ESM6: Boundaries of the SC haplotype. IVG viewer was used to show map positions of SC specific k-mers on DM v4.03.

a) Intersection between k-mers in coupling with SC in IVP16-587 and IVP17-618



b) Intersection of shared k-mers in coupling phase with SC in IVP16-587 and IVP17-618 and M6 (*Sli* candidate region)

