

Supplementary Information

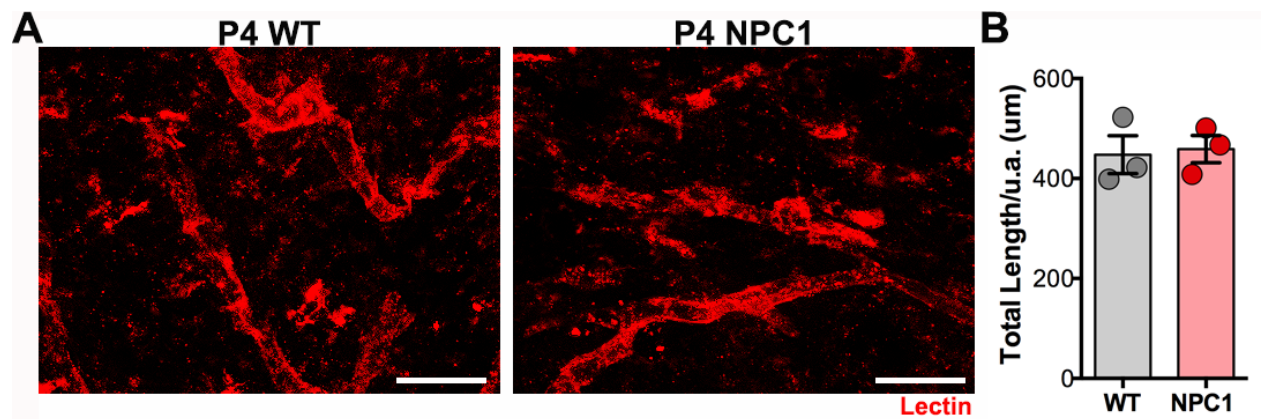


Fig. S1. Capillary density in the cerebellar WMR is similar between WT and *Npc1^{nmf164}* mice at P4. A) Sample images showing Lectin⁺ capillaries in the WMR of P4 WT and *Npc1^{nmf164}* mice. B) Quantitative analysis of the total length of Lectin⁺ capillaries in the WMR shows no differences between P4 WT and *Npc1^{nmf164}* mice. Data are presented as mean \pm SEM (B) n= 3 mice. Scale bars: (A) 20 μ m.

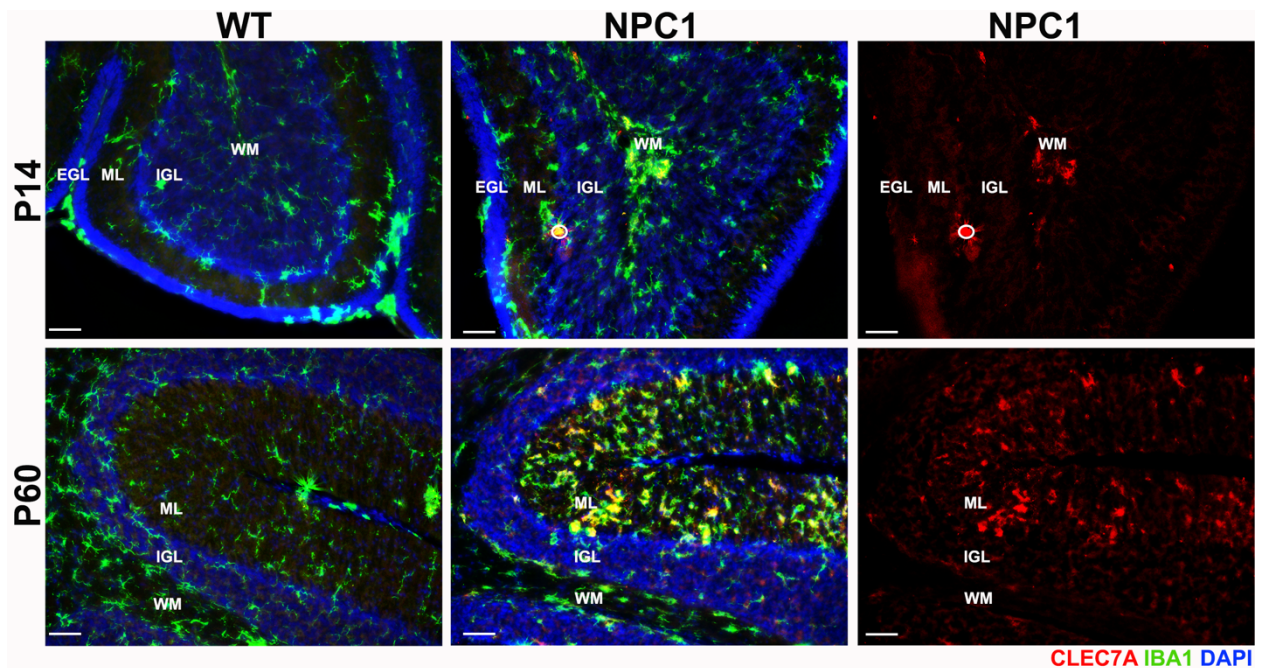


Fig. S2. Reappearance of CLEC7A in microglia is observed at P60 when PC degeneration and inflammatory activation of microglia are occurring. At P14, CLEC7A⁺ microglia were barely detected in the cerebellar white matter (WM) region (or any other region) in WT and *Npc1^{nmf164}* mice. At P60, the appearance of CLEC7A⁺ microglia is evident primarily at the ML where PC dendrite degeneration is occurring. White circle is indicating an artifact. Scale bars: (A) 50 μ m