

Supplemental material

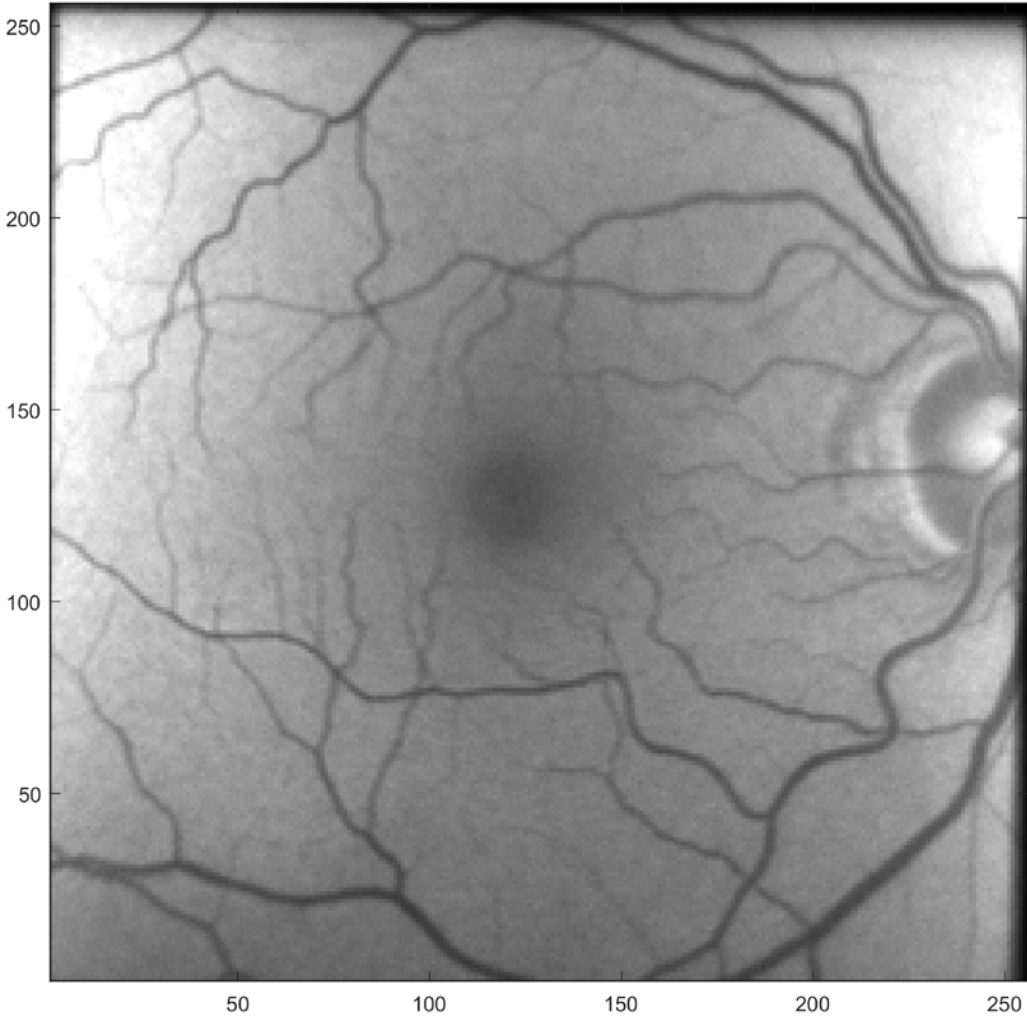


Figure S1: The preoperative fluorescence intensity image in SSC, patient shown in fig. 2.

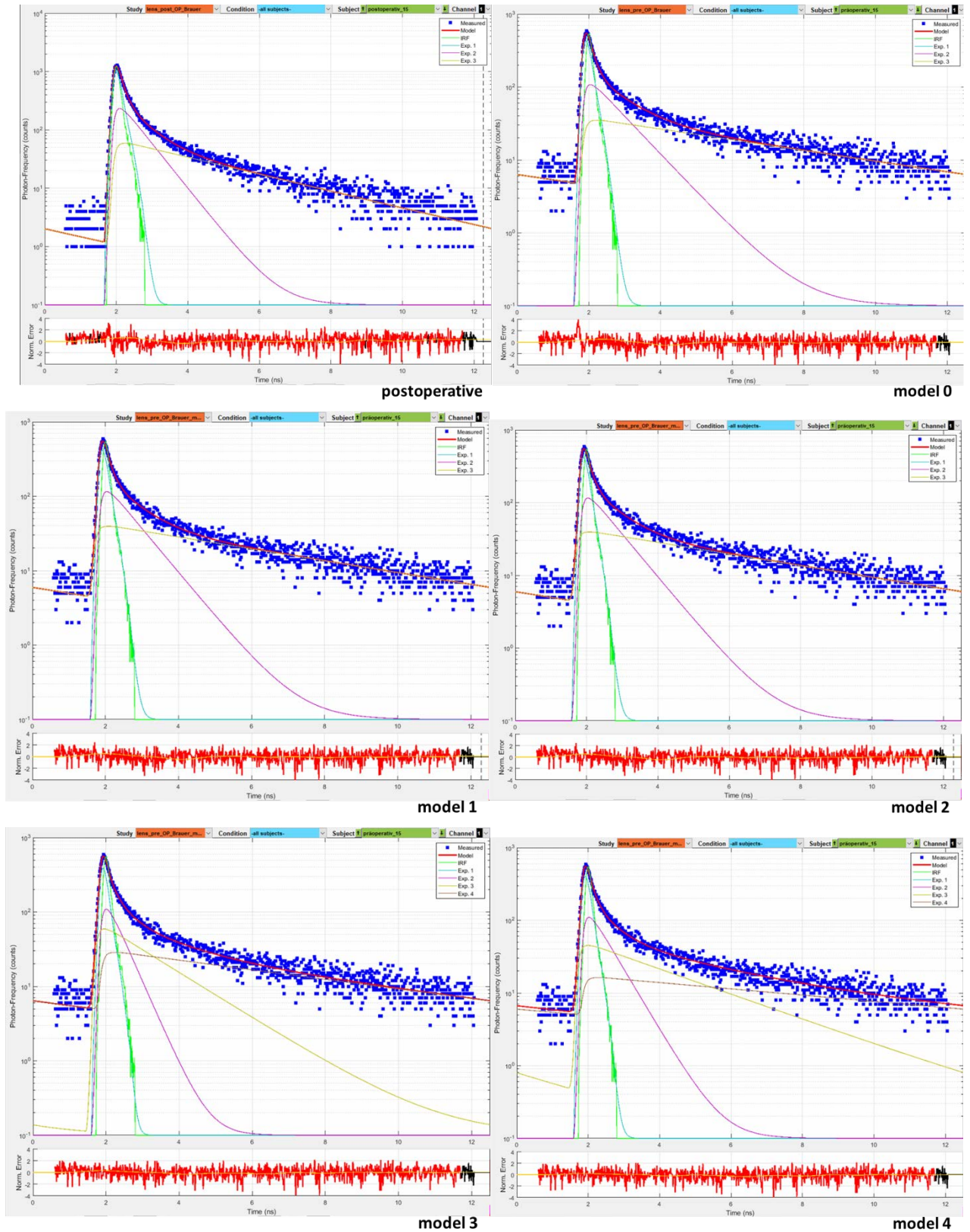


Figure S2: Fluorescence decay at one selected pixel (coordinates $x=100, y=100$) of the subject shown in fig. 2 in short-wavelength spectral channel (blue squares) along with fit results (red line). The residuals of the fit are shown in the bottom of each panel (Norm. Error). From top left to bottom right: postoperative measurement and preoperative fits by models 0 through 4.

τ_1 SSC	central	inner ring	outer ring	Full circle
postoperative	56(9)	79(10)	92(9)	88(8)
model 0	75(21)	117(26)	138(30)	132(29)
model 1	71(16)	102(18)	120(20)	115(19)
model 2	66(19)	92(26)	109(29)	204(28)
model 3	52(15)	75(20)	89(21)	85(20)
model 4	70(17)	99(19)	116(21)	111(20)
τ_1 LSC				
postoperative	56(12)	72(18)	86(20)	82(19)
model 0	75(21)	101(16)	119(20)	114(19)
model 1	72(16)	102(14)	120(14)	115(13)
model 2	37(16)	52(24)	63(28)	60(27)
model 3	66(22)	85(27)	95(29)	92(28)
model 4	66(20)	87(21)	99(22)	96(21)
τ_2 SSC				
postoperative	608(94)	552(50)	561(50)	560(49)
model 0	899(212)	912(215)	955(241)	944(233)
model 1	817(161)	805(161)	832(180)	826(175)
model 2	481(211)	430(193)	482(189)	471(185)
model 3	319(94)	367(89)	419(100)	405(94)
model 4	553(129)	598(100)	648(111)	634(107)
τ_2 LSC				
postoperative	475(56)	473(56)	492(65)	487(62)
model 0	607(74)	646(88)	679(105)	670(100)
model 1	610(58)	681(61)	739(67)	722(64)
model 2	258(89)	272(72)	306(100)	297(88)
model 3	472(148)	522(123)	554(106)	545(110)
model 4	496(118)	543(105)	574(91)	565(94)
τ_3 SSC				
postoperative	3339(503)	2905(156)	1922(193)	2930(178)
model 0	5583(499)	5413(559)	5475(619)	5464(601)
model 1	5333(389)	5116(423)	5165(471)	5158(456)
model 2	1453(696)	1393(615)	1505(627)	1479(616)
model 3	1123(280)	1242(259)	1317(350)	1295(324)
model 4	2813(349)	2791(376)	2782(403)	2844(372)
τ_3 LSC				
postoperative	2234(241)	2201(171)	2206(186)	2206(188)
model 0	3986(502)	3728(608)	3658(641)	3683(626)
model 1	4039(315)	3932(328)	4027(343)	4006(336)
model 2	946(122)	1052(141)	1188(186)	1151(160)
model 3	1308(366)	1515(309)	1623(321)	1590(305)
model 4	1941(284)	1920(349)	1876(380)	1982(317)
τ_4 SSC				
model 2	5461(399)	5247(412)	5339(408)	5322(404)
model 3	5684(549)	5552(464)	5600(401)	5592(415)
model 4	8328(1568)	7592(1167)	7314(875)	7404(946)
τ_4 LSC				
model 2	4311(271)	4446(377)	4890(572)	4775(513)
model 3	4288(616)	4027(783)	3912(810)	3948(795)
model 4	5144(1375)	4476(1305)	4229(1209)	4309(1226)

Table S1: mean Values (standard deviation) of lifetime components τ_1 through τ_4 in ps for the patient cohort from the postoperative three-exponential fit (model 0) and preoperative fits according to models 0 to 4 in the center, inner and outer ring as well as full circle of the ETDRS-grid.

a_1 SSC	central	inner ring	outer ring	Full circle
postoperative	93.6(2.3)	88.2(2.0)	86.6(1.8)	87.2(1.8)

model 0	86.1(6.9)	82.3(6.4)	82.8(5.0)	82.8(5.3)
model 1	86.1(6.6)	82.2(5.7)	82.3(4.6)	82.4(4.8)
model 2	80.8(10.9)	72.9(9.6)	74.2(7.1)	74.1(7.5)
model 3	84.8(7.5)	79.0(6.1)	78.5(4.9)	78.8(5.2)
model 4	85.1(7.5)	81.3(6.6)	81.6(5.2)	81.6(5.5)
a₁LSC				
postoperative	85.1(3.1)	79.3(2.3)	77.9(2.5)	78.4(2.3)
model 0	82.6(4.1)	79.6(2.8)	79.9(2.3)	79.9(2.3)
model 1	82.5(4.4)	80.3(3.7)	81.3(2.8)	81.1(3.0)
model 2	73.3(7.7)	67.3(7.7)	67.9(5.9)	67.9(6.2)
model 3	81.5(6.4)	79.0(4.9)	79.1(3.5)	79.2(3.9)
model 4	81.8(5.3)	78.6(4.8)	78.7(4.0)	78.8(4.1)
a₂SSC				
postoperative	5.54(2.17)	10.22(1.89)	11.83(1.69)	11.30(1.68)
model 0	8.88(3.66)	12.27(3.52)	12.39(2.54)	12.27(2.71)
model 1	8.58(3.24)	12.08(2.42)	12.57(1.93)	12.35(2.03)
model 2	11.24(5.32)	17.02(5.27)	16.52(4.93)	16.48(4.75)
model 3	4.82(2.80)	9.39(3.01)	10.83(3.11)	10.34(2.99)
model 4	7.55(2.60)	10.89(1.78)	11.43(1.47)	11.21(1.46)
a₂LSC				
postoperative	13.18(2.76)	18.38(2.03)	19.72(2.15)	19.23(1.99)
model 0	14.27(2.93)	17.55(1.87)	17.56(1.76)	17.47(1.71)
model 1	14.37(2.82)	16.91(2.20)	16.48(1.87)	16.52(1.91)
model 2	19.49(5.22)	24.48(5.07)	24.76(4.00)	24.55(4.18)
model 3	12.14(3.48)	16.37(2.69)	17.10(2.20)	16.79(2.29)
model 4	13.74(3.04)	17.38(2.41)	17.79(2.21)	17.60(2.20)
a₃SSC				
postoperative	0.83(0.27)	1.57(0.31)	1.56(0.30)	1.54(0.29)
model 0	4.99(3.48)	5.38(3.45)	4.81(2.95)	4.94(3.07)
model 1	5.33(3.60)	5.73(3.48)	5.10(2.94)	5.25(3.07)
model 2	3.00(3.54)	4.87(3.60)	4.73(2.88)	4.71(3.00)
model 3	6.52(4.49)	7.40(4.40)	6.86(3.75)	9.97(3.88)
model 4	4.88(3.48)	5.14(3.15)	4.43(2.51)	4.60(2.66)
a₃LSC				
postoperative	1.69(0.41)	2.30(0.42)	2.38(0.41)	2.34(0.40)
model 0	3.07(1.78)	2.81(1.36)	2.53(0.94)	2.61(1.04)
model 1	3.14(2.12)	2.74(1.74)	2.25(1.17)	2.38(1.31)
model 2	4.75(1.81)	6.25(2.08)	5.94(1.98)	5.98(1.80)
model 3	3.80(4.57)	2.45(3.20)	1.78(2.19)	1.98(2.46)
model 4	2.76(2.86)	2.14(2.65)	1.65(2.10)	1.79(2.23)
a₄SSC				
model 2	5.20(3.70)	5.53(3.56)	4.82(2.88)	4.99(3.04)
model 3	3.92(2.70)	4.26(2.85)	3.87(2.64)	3.96(2.67)
model 4	2.44(2.52)	2.69(2.65)	2.58(2.48)	2.60(2.52)
a₄LSC				
model 2	2.47(2.32)	2.00(2.05)	1.45(1.31)	1.60(1.50)
model 3	2.54(1.63)	2.20(1.12)	1.98(0.79)	2.04(0.86)
model 4	1.75(0.75)	1.88(0.72)	1.85(0.67)	1.85(0.66)

Table S2: mean Values (standard deviation) of the relative amplitudes of a₁ through a₄ of the respective lifetimes in percent for the patient cohort from the postoperative three-exponential fit (model 0) and preoperative fits according to models 0 to 4 in the center, inner and outer ring as well as full circle of the ETDRS-grid.