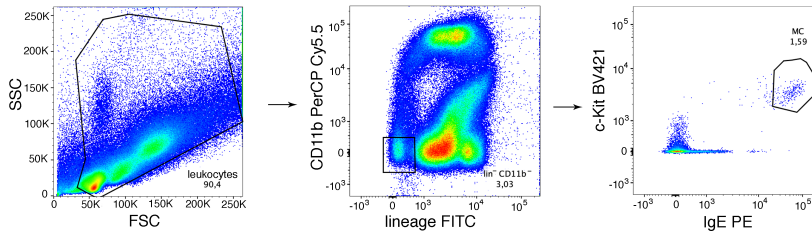
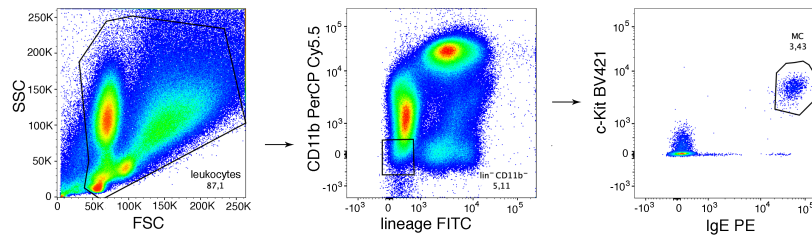


**A**

noninfected

**B**

day 30 p.i.

**S2 Fig: Gating strategy.**

Representative dot blots showing the gating strategy. Thoracic cavity cells were isolated from noninfected mice (A) and day 30 *L. sigmodontis* infected mice (B). Mast cells were defined as lineage (CD4, CD8 and CD19)<sup>-</sup> CD11b<sup>-</sup> leukocytes that are c-Kit (CD117)<sup>+</sup> and IgE<sup>+</sup>. 1 x 10<sup>6</sup> cells were gated for the analysis.