

**OMTN, Volume 21**

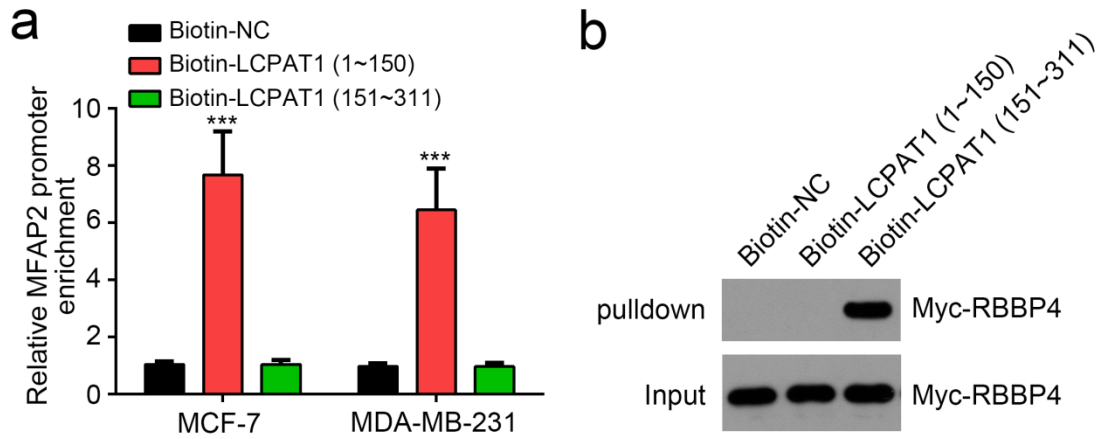
**Supplemental Information**

**lncRNA LCPAT1 Upregulation**

**Promotes Breast Cancer Progression**

**via Enhancing MFAP2 Transcription**

**Xue Gong, Tuozhou Dong, Ming Niu, Xiaoshuan Liang, Shanshan Sun, Youxue Zhang, Yue Li, and Dalin Li**



**Supplementary Fig. 1.** LCPAT1 interacts with MFAP2 promoter and RBBP4. (a) Pull-down assay using biotin-labeled LCPAT1 fragment and cell lysates for detection of the interaction between LCPAT1 and MFAP2 promoter. (b) Pull-down assay using biotin-labeled LCPAT1 fragment and Myc-RBBP4 overexpressing cell lysates, followed by Western blotting. \*\*\* $P < 0.001$ .

**Supplementary Table 1. Genomic locations of neighboring genes.**

Gene	Genomic location
<i>LCPAT1</i>	Chromosome 1: 17406760-17407382
<i>MFAP2</i>	Chromosome 1: 16974502-16981586
<i>ATP13A2</i>	Chromosome 1: 16985958-17011928
<i>SDHB</i>	Chromosome 1: 17018722-17054032
<i>PADI2</i>	Chromosome 1: 17066761-17119453
<i>PADI1</i>	Chromosome 1: 17205125-17246007
<i>PADI3</i>	Chromosome 1: 17249079-17284233
<i>PADI4</i>	Chromosome 1: 17308195-17364004
<i>PADI6</i>	Chromosome 1: 17372196-17401699
<i>RCC2</i>	Chromosome 1: 17406760-17439677
<i>ARHGEF10L</i>	Chromosome 1: 17513442-17697875